

FOR LEASE | RETAIL SPACE

Jetport Plaza | 443 Western Ave | South Portland, ME



46,000± SF IN-LINE RETAIL

- Subdividable to 6,000± SF
- Great location in the Maine Mall area close to I-95/Maine Turnpike and I-295, with traffic counts of 28,390± cars/day (AADT 2022)
- Tenants include Staples, Appliance Warehouse, The UPS Store, Hearing Life, RaveX, AAA & Aroma Joe's

LEASE RATE: \$8.00/SF NNN



MARK MALONE, CCIM

207.773.6000 D

207.233.6000 C

mark@malonecb.com

MALONE COMMERCIAL BROKERS

5 Moulton Street • Suite 3

Portland, ME 04101

207.772.2422 • malonecb.com

PROPERTY SUMMARY

443 Western Ave | South Portland, ME



OWNER: Jetport Plaza, LLC

DEED: Book 21265, Page 0300

ASSESSOR: Map 48, Lot 2E

LOT SIZE: 10.07± AC

BUILDING SIZE: 100,982± SF

AVAILABLE SPACE: 46,000± SF subdividable

YEAR BUILT: 1971; 2005

CONSTRUCTION: Steel, Masonry

FOUNDATION: Slab

FLOOR TYPE: Concrete

ROOF: Tar & Gravel

SIDING: Concrete/Cinder Block

LOADING: Two (2) loading docks
One (1) loading door

CEILING HEIGHT: 14'±-17'±

ELECTRICITY: 1600 Amps, 480 Volt, 3 Phase

HVAC: AC, Forced Hot Air; Natural Gas

UTILITIES: Municipal Water & Sewer

RESTROOM: Yes (2)

SPRINKLER: Yes, Wet System

SIGNAGE: Pylon & On building

PARKING: 462± on-site parking spaces

ROAD FRONTAGE: 853'± on Western Avenue

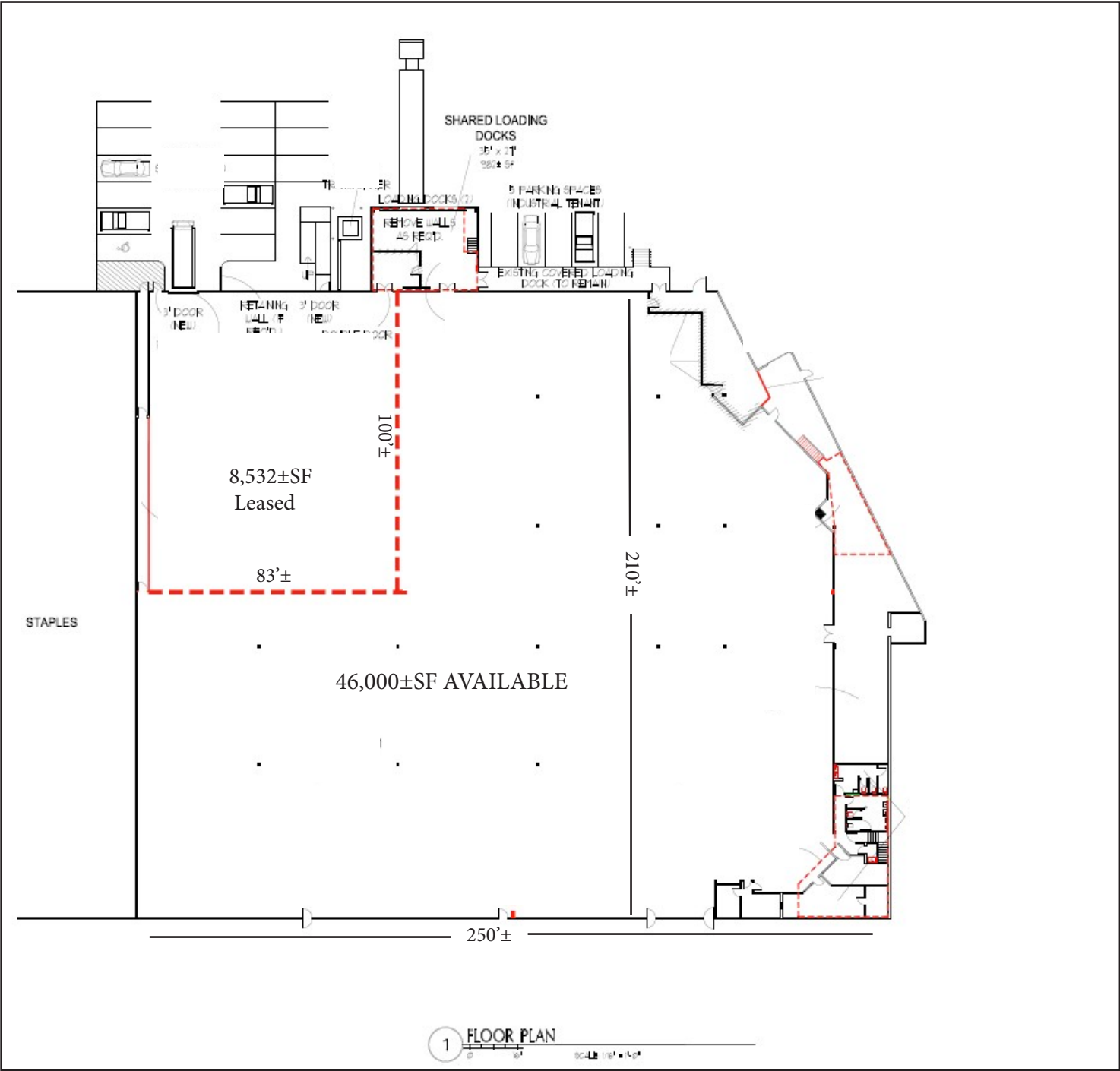
ZONING: CCR

REAL ESTATE TAXES: \$136,072 (2025)



FLOOR PLAN

443 Western Ave | South Portland, ME



FOR LEASE | RETAIL SPACE

Jetport Plaza | 443 Western Ave | South Portland, ME



Image Landsat / Copernicus

This document has been prepared by Malone Commercial Brokers for advertising and general information only. Malone Commercial Brokers makes no guarantees, representations or warranties of any kind, expressed or implied, regarding, but not limited to, warranties of content, accuracy, and reliability. Any interested party should undertake their own inquiries as to the accuracy of the information. Malone Commercial Brokers excludes unequivocally all informed or implied terms, conditions and warranties arising out of this document and excludes all liability for loss and damages there from. All data is subject to change of price, error, omissions, other conditions or withdrawal without notice. Malone Commercial Brokers is acting as the Seller's/Lessor's agent in the marketing of this property.



MARK MALONE, CCIM

207.773.6000 D

207.233.6000 C

mark@malonecb.com

MALONE COMMERCIAL BROKERS

5 Moulton Street • Suite 3

Portland, ME 04101

207.772.2422 • malonecb.com