

Lancaster Land

2020 E Main St, Lancaster, OH 43130

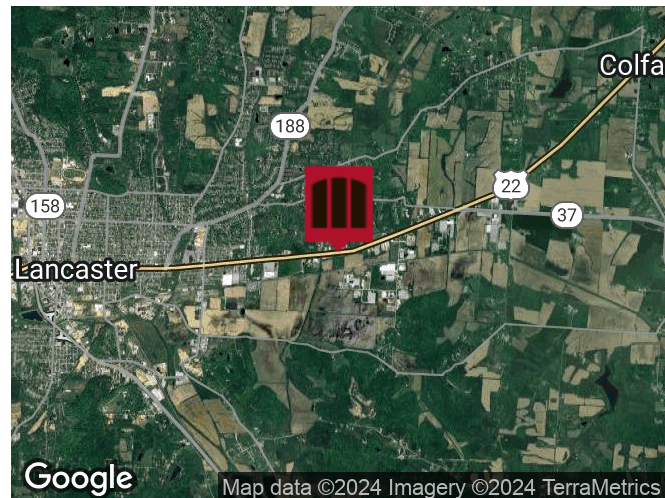
Property Description

Located in Lancaster, Fairfield County, OH, the site contains approximately 10.83 acres of land. The sale does not include the existing gas station. Gas Station existing owners will create an access point via their store.

Property Highlights

- Approximately 10.83 acres of land
- Gas Station NOT included in sale offering
- Existing owners will create an access point

Demographics	3 Miles	5 Miles	10 Miles
Total Households	10,498	20,934	33,132
Total Population	23,530	47,986	78,491
Average HH Income	\$57,595	\$60,870	\$64,711



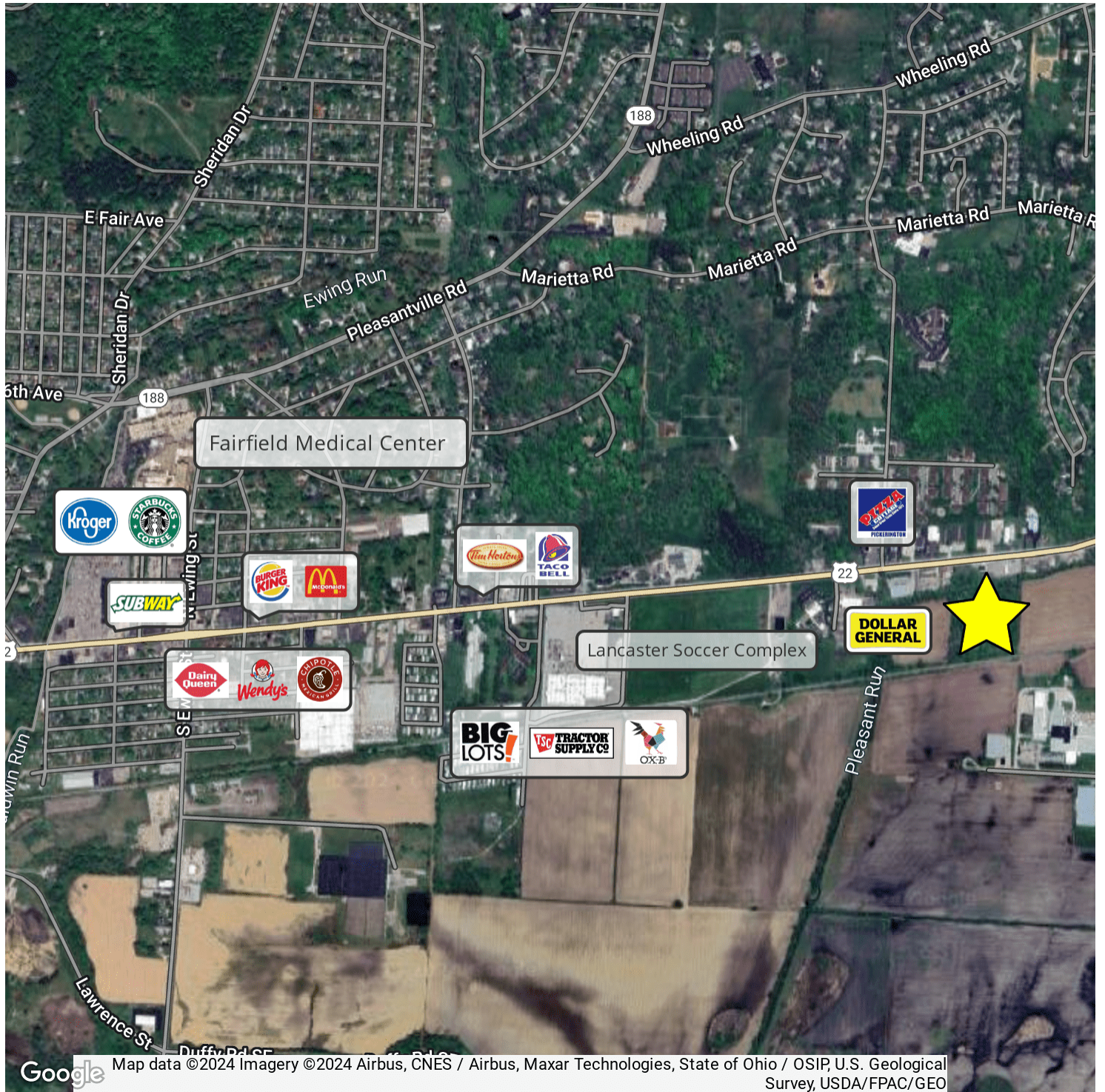
Building Summary

Sale Price:	\$300,000
Acres:	+/- 10.83
Zoning:	Commercial General District (CG)

Retailer Map

Lancaster Land

2020 E Main St, Lancaster, OH 43130



Tim Maly
614.358.2089
tmaly@goblackgate.com

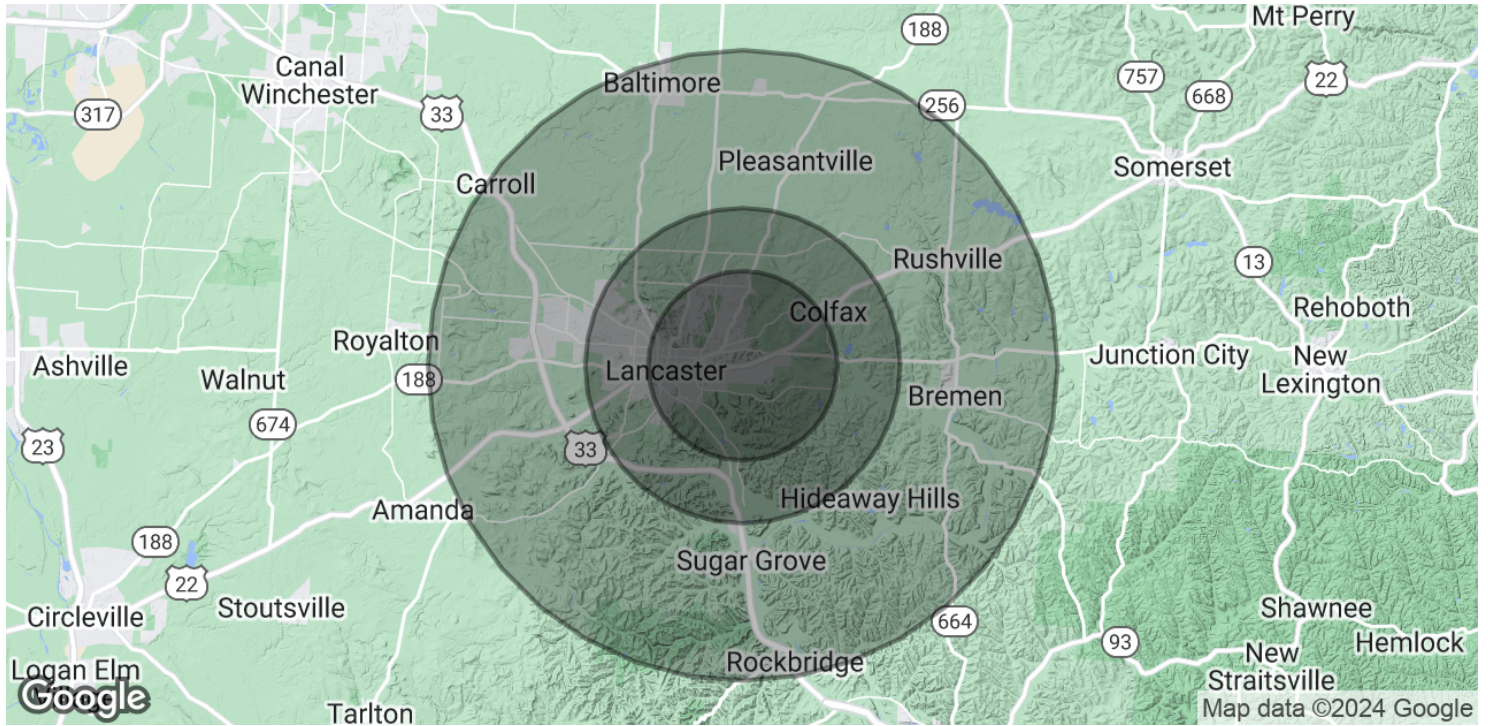
 **BlackGate**

The information contained herein was obtained from sources believed reliable; however, Black Gate Partners LLC makes no guarantees, warranties, or representations as to the completeness or accuracy thereof. The presentation of this property is submitted subject to errors, omissions, change of price or conditions prior to sale or lease, or withdrawal without notice.

Demographics Map & Report

Lancaster Land

2020 E Main St, Lancaster, OH 43130



POPULATION	3 MILES	5 MILES	10 MILES
Total Population	23,530	47,986	78,491
Average Age	40.1	40.4	41.8
Average Age (Male)	37.6	38.9	40.5
Average Age (Female)	40.9	40.8	41.9
HOUSEHOLDS & INCOME	3 MILES	5 MILES	10 MILES
Total Households	10,498	20,934	33,132
# of Persons per HH	2.2	2.3	2.4
Average HH Income	\$57,595	\$60,870	\$64,711
Average House Value	\$143,395	\$141,525	\$156,529

* Demographic data derived from 2020 ACS - US Census