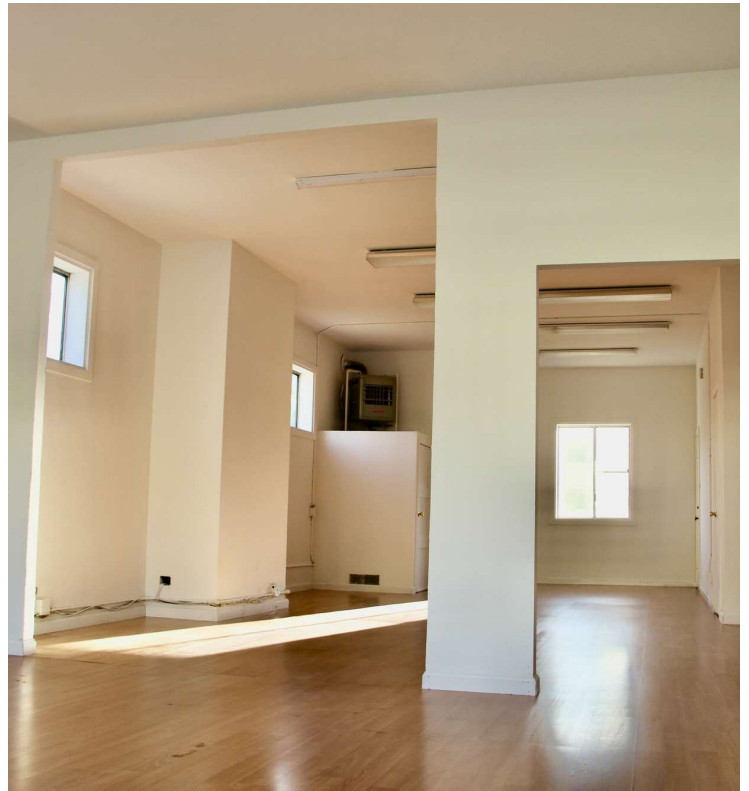


# FOR LEASE - 935 SIR FRANCIS DRAKE BLVD, UNIT A



## OFFERING SUMMARY

<b>LEASE RATE:</b>	\$4.00 SF/month (MG)
<b>AVAILABLE SF:</b>	705 SF
<b>BUILDING SIZE:</b>	3,089 SF
<b>TERM:</b>	3-5 years

## PROPERTY DESCRIPTION

SVN MG Property Advisors is pleased to present 935 Sir Francis Drake, Unit A. This practical mixed use propriety is bright, clean and has a beautiful view of Mt. Tam. This functional space, is ideal for a wide range of commercial uses including retail and office. Boasting a modern design and abundant natural light, with a private restroom and two parking spaces.

This unit is located in the Kentfield Commercial Area of Sir Francis Drake and is walking distance to the College of Marin campus, Kent Middle School, and several retail amenities such as Woodlands Market, Guesthouse and Half Day Cafe.

## PROPERTY HIGHLIGHTS

- Adaptable and functional space
- Ample street parking for clients
- Easy access to major roadways
- Ideal for a variety of commercial uses

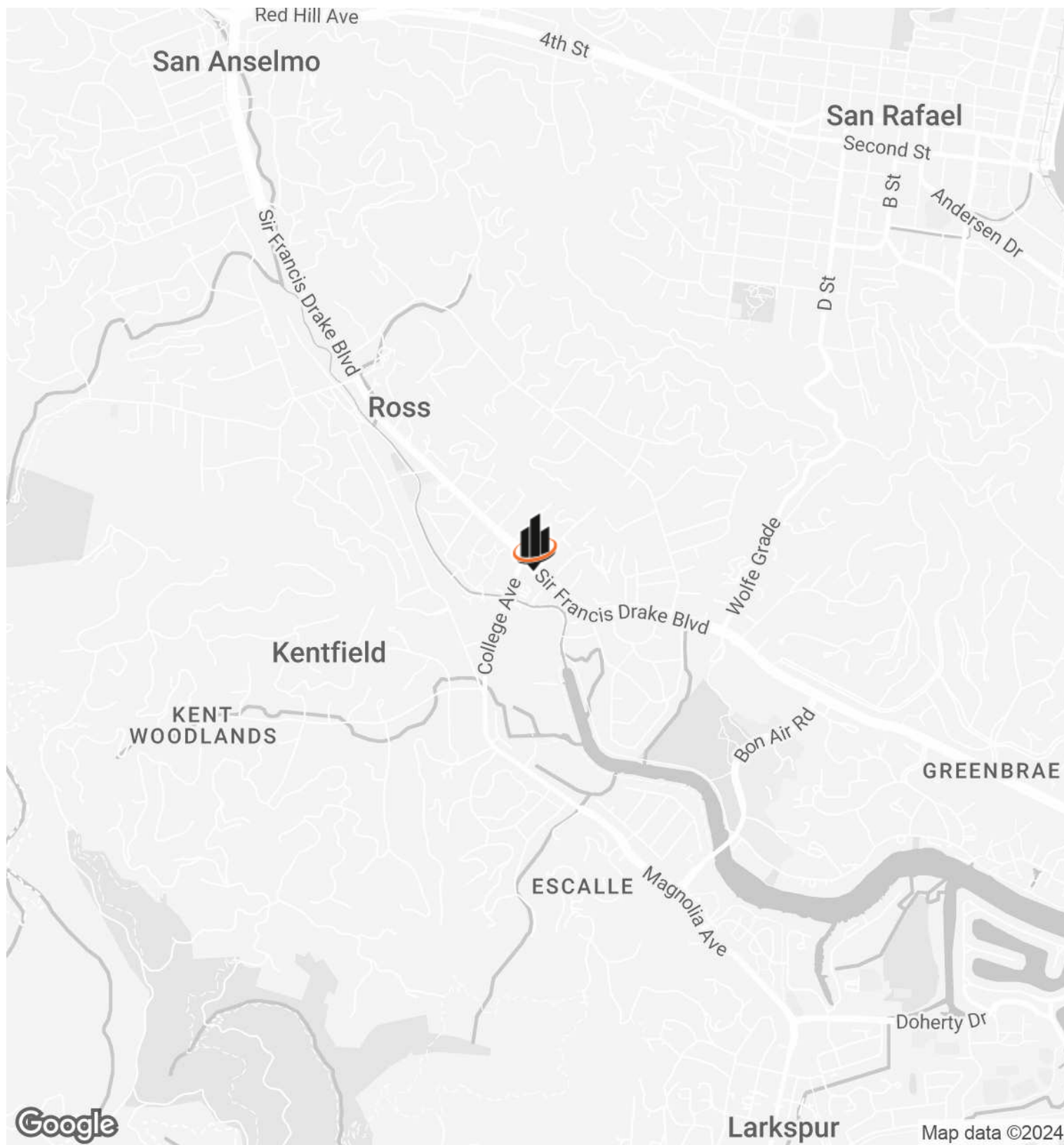
### LYNSEY KAYSER

O: 415.531.0734

lynsey.kayser@svn.com

CalDRE # #01990180

# LOCATION MAP



**LYNSEY KAYSER**

O: 415.531.0734

lynsey.kayser@svn.com

CalDRE # #01990180