

RETAIL

at the
WILLIAM VALE



The William Vale

SPORTS SUPPLY



Lantern
Real Estate Advisors + Partners

PREMISES

RETAIL A

Ground Floor **1,931 SF**
16' Ceiling Height

Frontage **30'** on N. 12th Street

Possession **Arranged**

RETAIL B

Ground Floor **450 SF**
16' Ceiling Height

Lower Level **12,599 SF**
14' Ceiling Height

Possession **Immediate**

Neighboring Tenants **KITH, Brooklyn Bowl, Bathhouse, Le Crocodile, Brooklyn Brewery, Leuca, Suitsupply, Laser Wolf**

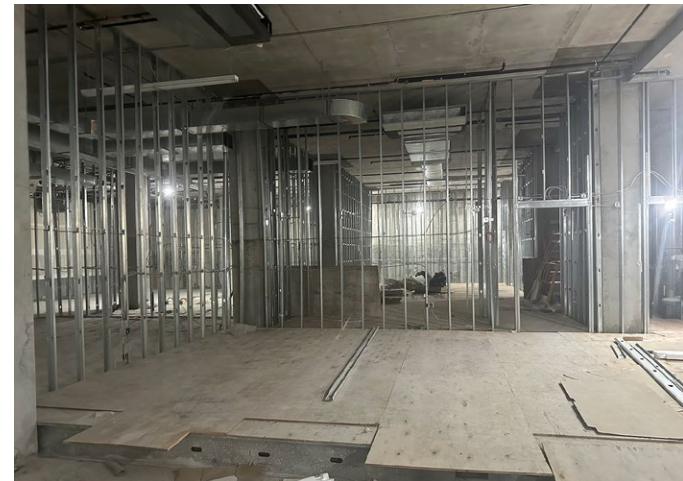
- At the base of the William Vale Hotel
- Previous Tenant Northwell Health's buildout still in place
- Surrounded by Williamsburg's hotels such as the Arlo Hotel, The Wythe Hotel, The Hoxton, and Coda Williamsburg



RETAIL A



RETAIL B



PREMISES

COMMUNITY FACILITY

Ground Floor **9,341 SF**
16' Ceiling Height

Frontage **80'** on Wythe Avenue
45' on N. 13th Street

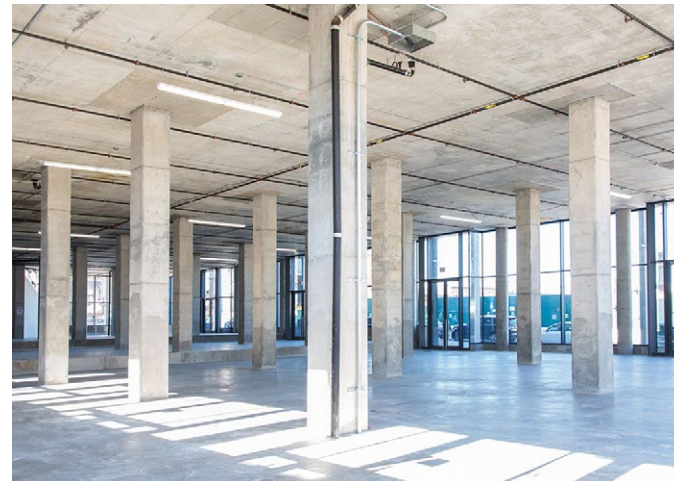
Possession **Immediate**

Community Facility Accepted Uses

- Higher Educational Facilities: Colleges, Universities, Dormitories, Fraternity or Sorority Houses, Libraries, Museums
- Long Term Care Facility
- House Of Worship: Churches, Synagogues, Mosques, Temples, Monasteries, Convents
- Medical Facilities: Hospital, Ambulatory, Diagnostic or Treatment Centers, Medical Offices, Not-for-Profit Medical Staff Dwelling
- Clubs & Organizations: Non-Commercial Clubs, Community Centers, Non-Commercial Recreation Centers



COMMUNITY FACILITY



GROUND FLOOR

N. 13th STREET

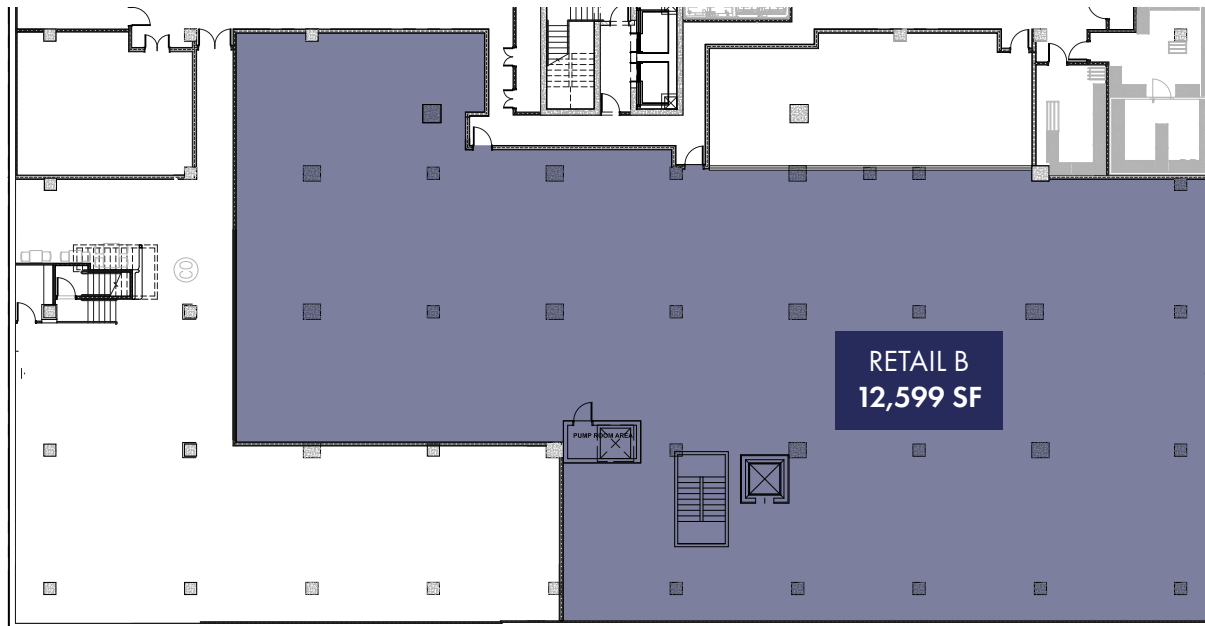


N. 12th STREET

RETAIL B ENTRANCE
450 SF

WYTHE AVENUE

LOWER LEVEL







RETAIL

at the
WILLIAM VALE

MATTHEW SEIGEL
matthew@lanterncompany.com

JUSTIN ABIZADEH
justin@lanterncompany.com

+1 (646) 970-3223
www.lanterncompany.com

Lantern
Real Estate Advisors + Partners