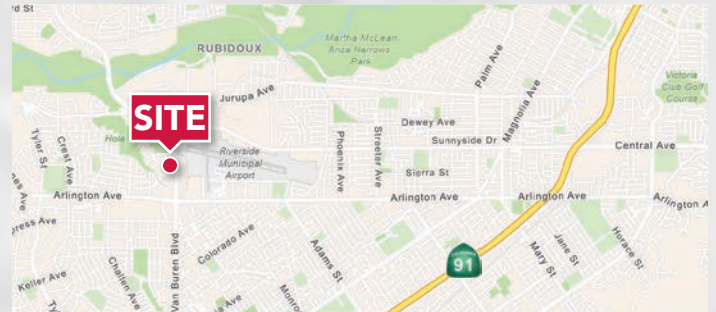




PROPERTY HIGHLIGHTS

- Fully Approved Industrial Outdoor Storage Pallet Yard
- Zoning: M1
- ±2.76 AC
- ±10,500 SF Industrial Building
- Clear Height: 14'
- Drive-Ins: 4 Total | 10'w x 12'h
- Price: Call for Details

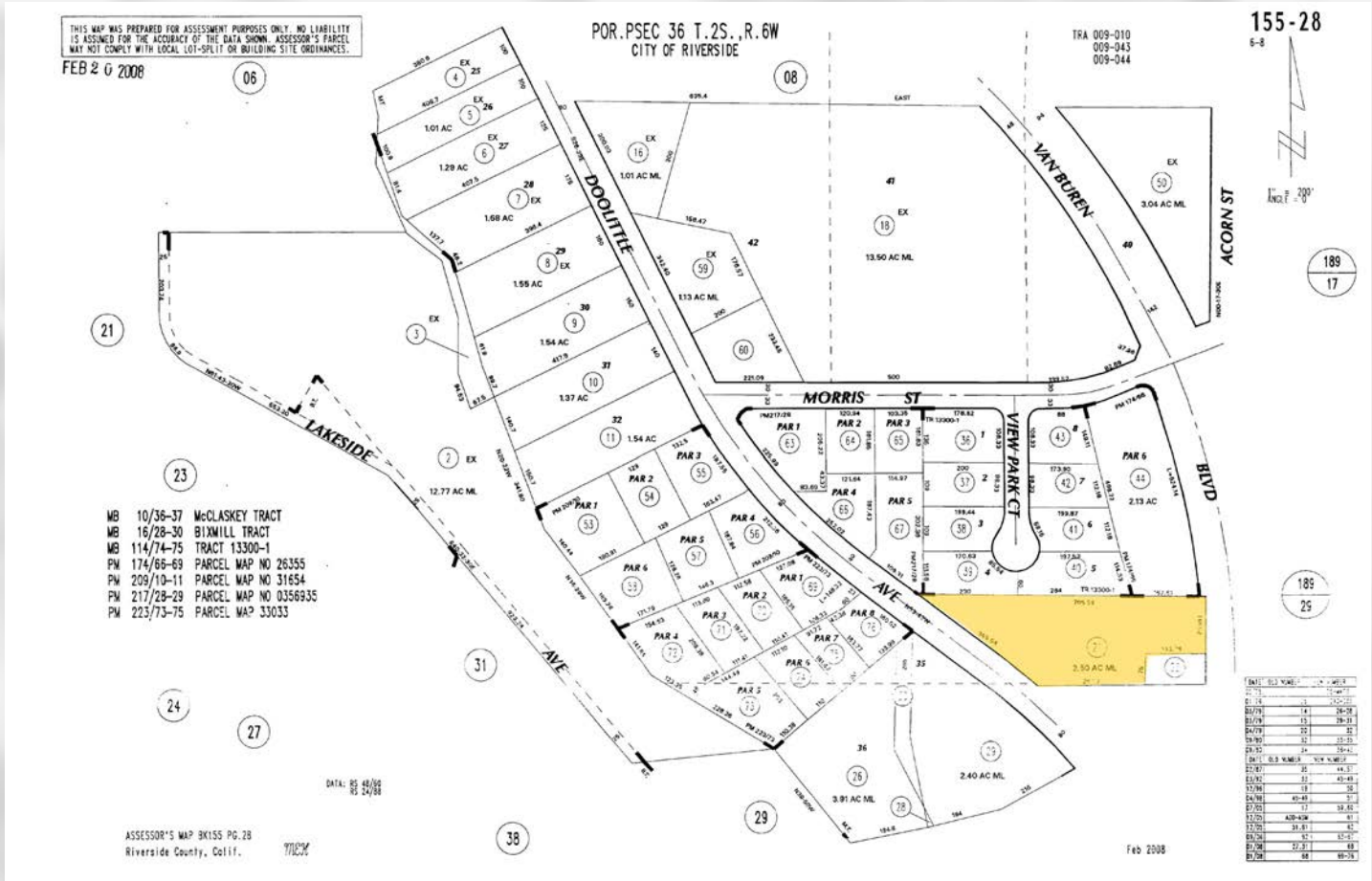
DO NOT DISTURB TENANT



FOR SALE: 2.76 AC

Approved Pallet Yard

6607 DOOLITTLE AVENUE, RIVERSIDE, CA 92503



DAVID MUDGE JR
951.276.3638
DRE#: 01975345
dmudgejr@lee-associates.com



DAVE MUDGE
951.276.3611
DRE#: 01070762
dmudge@lee-associates.com