

47785 Anchor Ct

FOR LEASE | 41,417 SF R&D FLEX SPACE

CBRE



Property Overview

41,417 SF R&D FLEX SPACE

+/-20,725 to
+/-27,000

Square Feet
Warehouse R&D Space

24'

Warehouse
Clear Height

1

Dock Door

Heavy

480V 3 Phase
Power

+/-15,000 to
+/-21,000

Square Feet
Office Space

1

Grade Level
Door

114

Parking Spaces

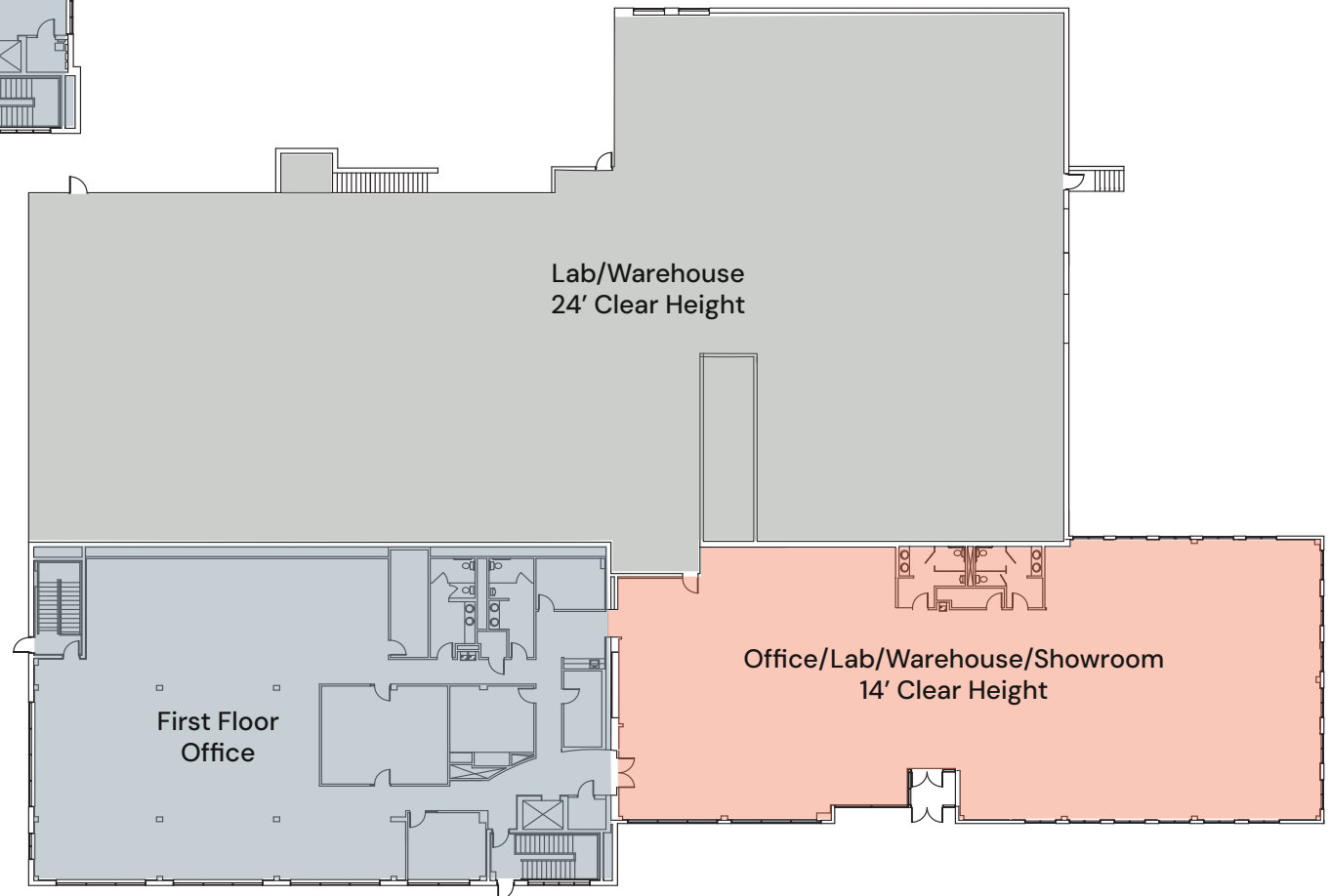
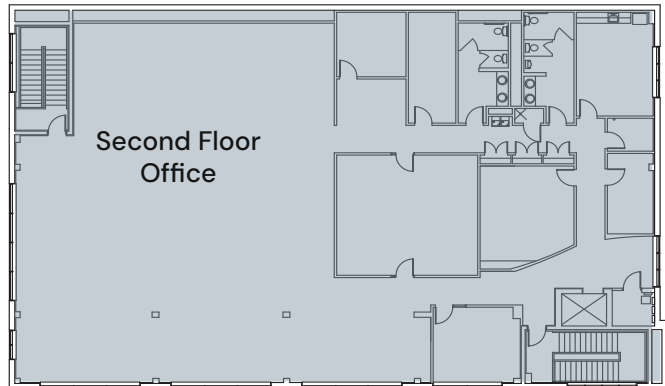
Extensive

Glass Line for
Natural Light

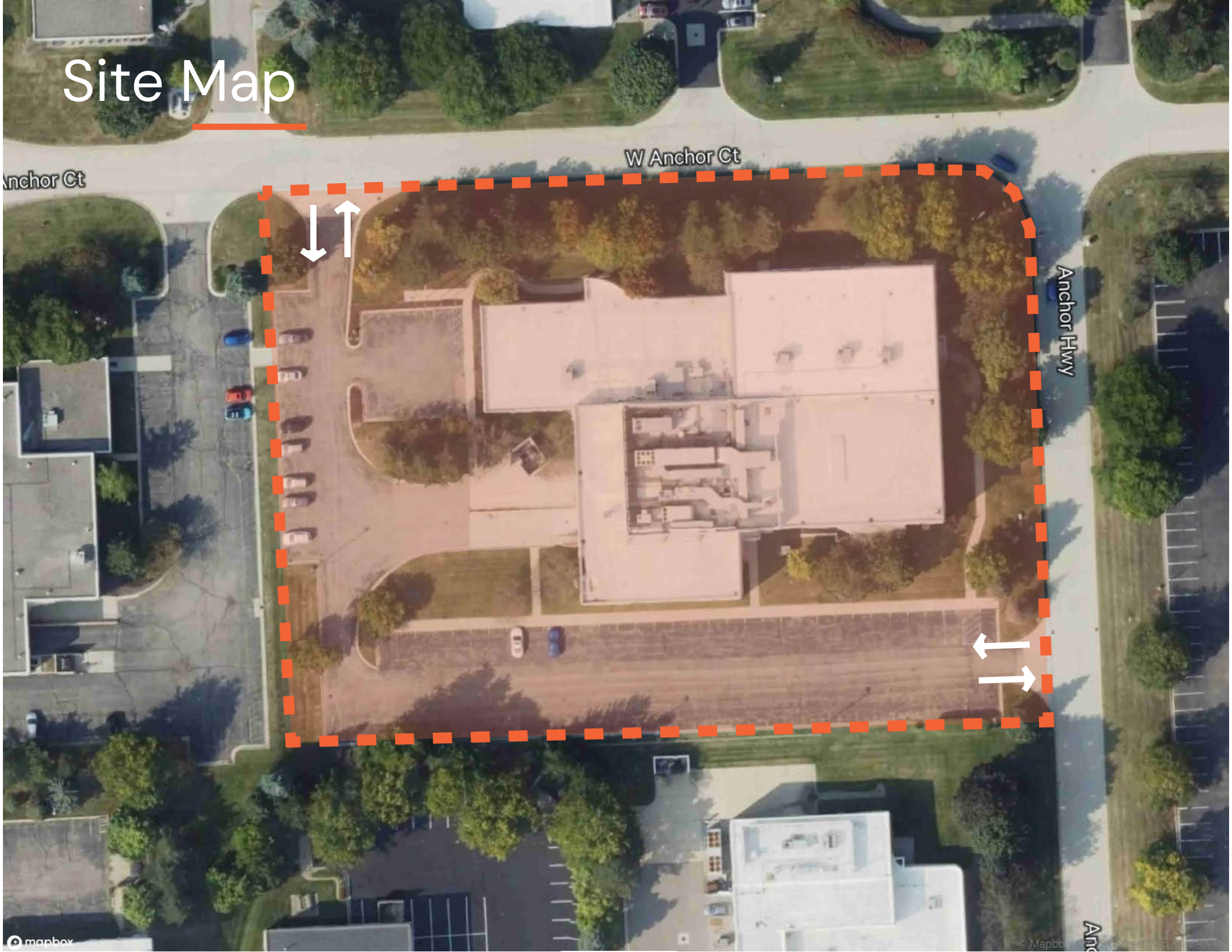


Building is Currently
Undergoing Significant
Renovations with Flexible
Layout Planned

Floor Plan



Site Map



W Anchor Ct

Anchor Hwy

Anchor Ct

Park Map



Koyo

REDGUARD
FIRE & SECURITY

Atlas Copco
Group
COORD3

HORIZON
GLOBAL

opmobility

CSC

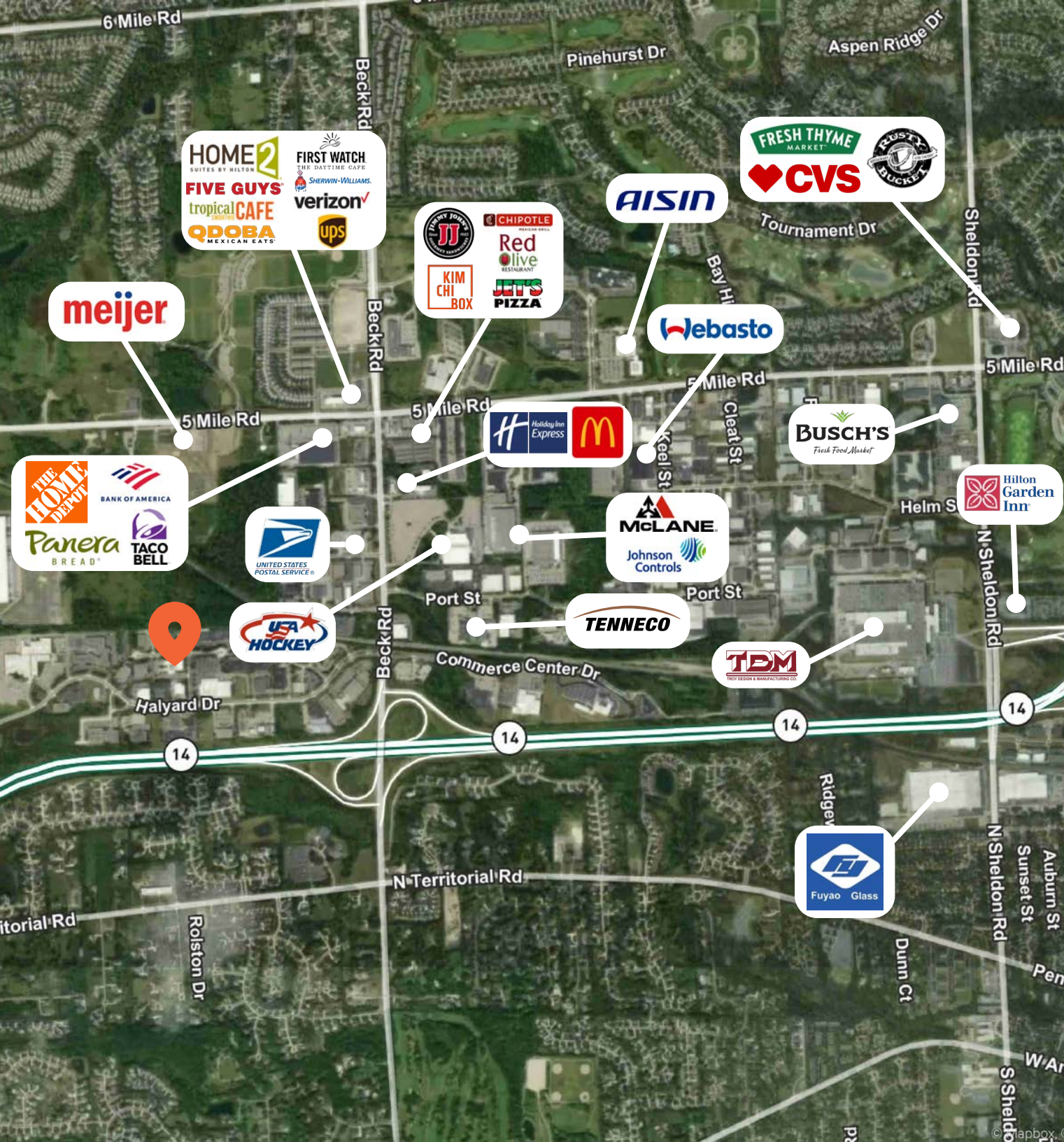
FINLAN
INSURANCE

MTS
MILLER TECHNICAL SERVICES

SANDEN

NuStep

FREUDENBERG
INNOVATING TOGETHER



Area Overview

2 Minutes
to M-14 (0.8 Mile)

7 Minutes
to I-275 (5 Miles)

8 Minutes
to I-96 (5.8 Miles)

15 Minutes
to US-23 (13 Miles)

PLYMOUTH MI

47785 W Anchor Ct

FOR LEASE | 41,417 SF R&D FLEX SPACE

Edward Wujek

Vice Chairman
+1 248 229 5021
edward.wujek@cbre.com

Philip Sprague

Vice President
+1 248 351 2032
philip.sprague@cbre.com

Kelly Cubbin

Vice President
+1 248 321 6023
kelly.cubbin@cbre.com

CBRE

© 2026 CBRE, Inc. All rights reserved. This information has been obtained from sources believed reliable but has not been verified for accuracy or completeness. CBRE, Inc. makes no guarantee, representation or warranty and accepts no responsibility or liability as to the accuracy, completeness, or reliability of the information contained herein. You should conduct a careful, independent investigation of the property and verify all information. Any reliance on this information is solely at your own risk. CBRE and the CBRE logo are service marks of CBRE, Inc. All other marks displayed on this document are the property of their respective owners, and the use of such marks does not imply any affiliation with or endorsement of CBRE. Photos herein are the property of their respective owners. Use of these images without the express written consent of the owner is prohibited.