

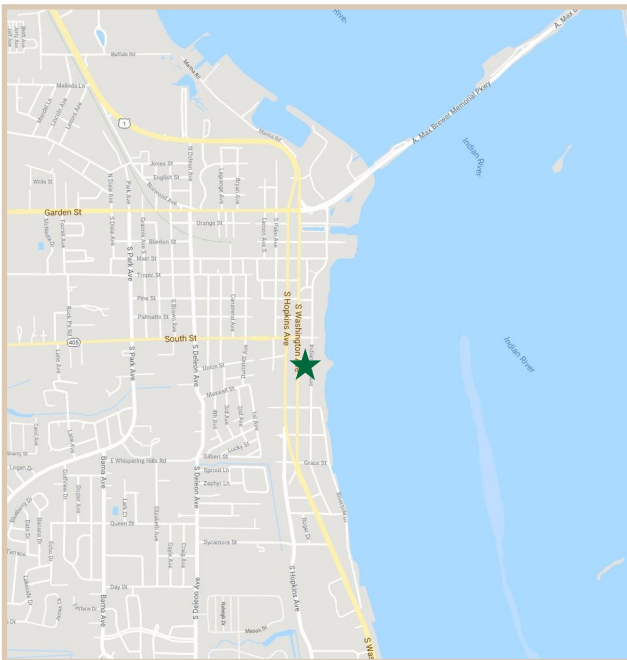
FOR LEASE

City Square Professional Center

815 S Washington Avenue, Titusville, FL, 32780

PROPERTY FACTS

Building Area:	18,822 Sq. Ft.
No. of Units:	8 Units
Parcel Size:	1.15 Acres
Year Built:	1989
Construction:	Concrete Block with Stucco
Zoning:	CBD
Parking:	60 Spaces
Building Height:	Two Stories
Use:	Class A Office Building
Special Features:	Elevator



PROPERTY HIGHLIGHTS

Price	These units are competitively priced, providing an excellent value for the area.
Location	Near Titusville City Hall, Brevard County Courthouse, and Downtown Titusville. There are lots of restaurants and retail stores near by.
Capital Expenditures	Freshly renovated units ready to be moved into. Excellent exposure to the public with the signage provided by the Landlords.
Parking & Access	Two entrances to the parking lot with 60 parking spaces to choose from.



CHARLES A. VON STEIN, INC.
*Commercial Property Management,
Sales & Leasing Specialists since 1963*
626 Old Dixie Highway SW
Vero Beach, FL 32962
www.vscrc.com

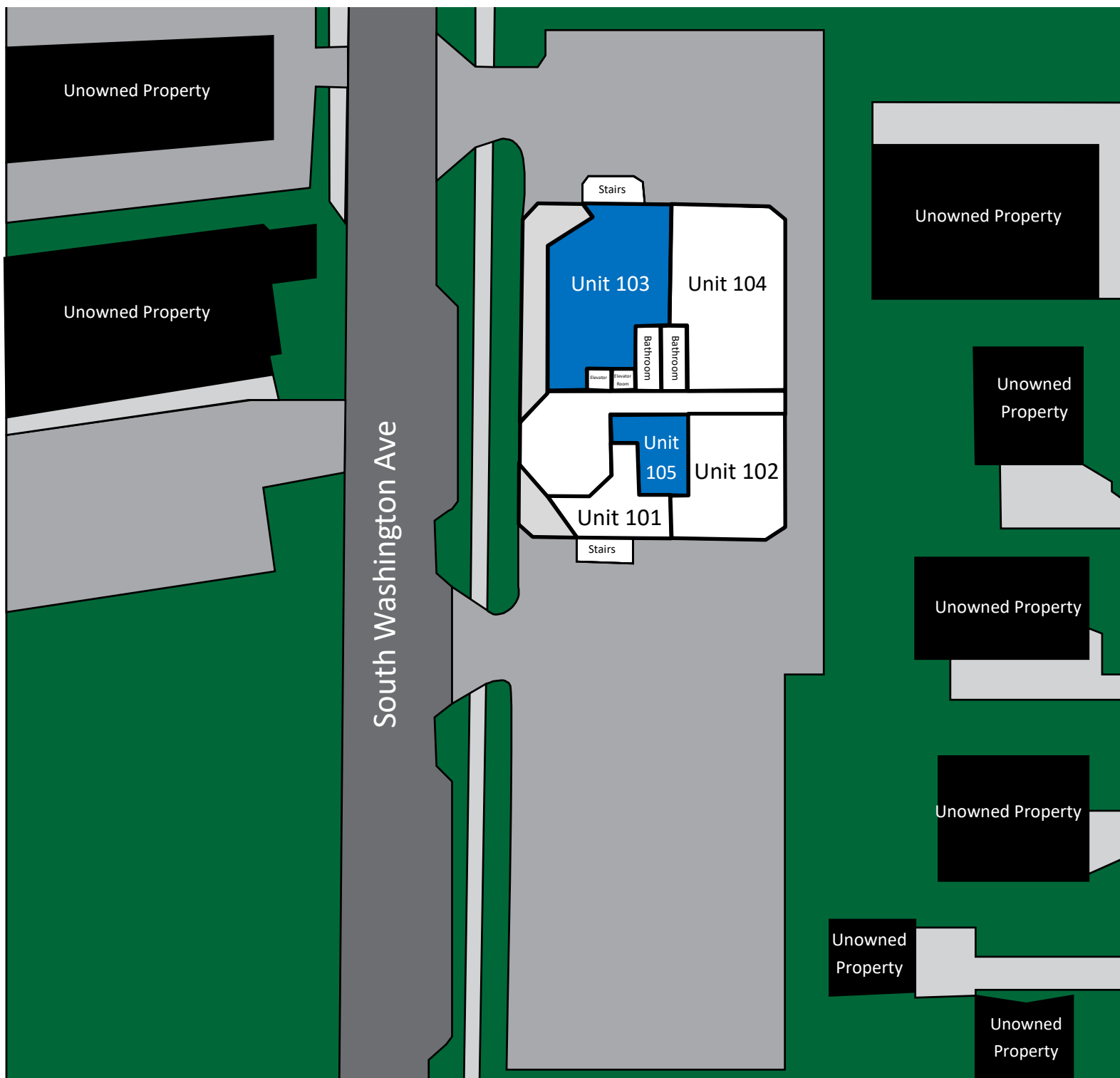
CONTACT INFO:

Brevard County:	321.725.1961
Indian River County:	772.778.4885
Fax:	772.778.4908
Leasing:	leasing@vscrc.com

ALL INFORMATION FURNISHED REGARDING PROPERTY FOR SALE, RENTAL OR FINANCING SOURCES DEEMED RELIABLE, BUT NO WARRANTY OR REPRESENTATION IS MADE AS TO THE ACCURACY THEREOF AND SAME IS SUBMITTED SUBJECT TO ERRORS, OMISSIONS, CHANGE OF PRICE, RENTAL OR OTHER CONDITIONS, PRIOR SALE, LEASING OR FINANCING OR WITHDRAWAL WITHOUT NOTICE.

City Square Professional Center

815 S Washington Avenue, Titusville, FL, 32780



CHARLES A. VON STEIN, INC.

**Commercial Property Management,
Sales & Leasing Specialists since 1963**
626 Old Dixie Highway SW
Vero Beach, FL 32962
www.vscrc.com

CONTACT INFO:

Brevard County: 321.725.1961
Indian River County: 772.778.4885
Fax: 772.778.4908
Leasing: leasing@vscre.com

First Floor

815 S Washington Avenue, Titusville, FL, 32780

UNIT	SIZE		RATE		MONTHLY RATE	UTILITIES INCLUDED				Details
						Water	Electric	Trash	Cable	
103	1,911	SF	\$17.00	SF/ YR	\$2,707.25	YES	YES	YES	NO	Recently Renovated Office Space
105	450	SF	\$20.00	SF/ YR	\$750.00	YES	YES	YES	NO	Recently Renovated Office Space



CHARLES A. VON STEIN, INC.

Commercial Property Management,

Sales & Leasing Specialists since 1963

626 Old Dixie Highway SW

CONTACT INFO:

Brevard County: 321.725.1961

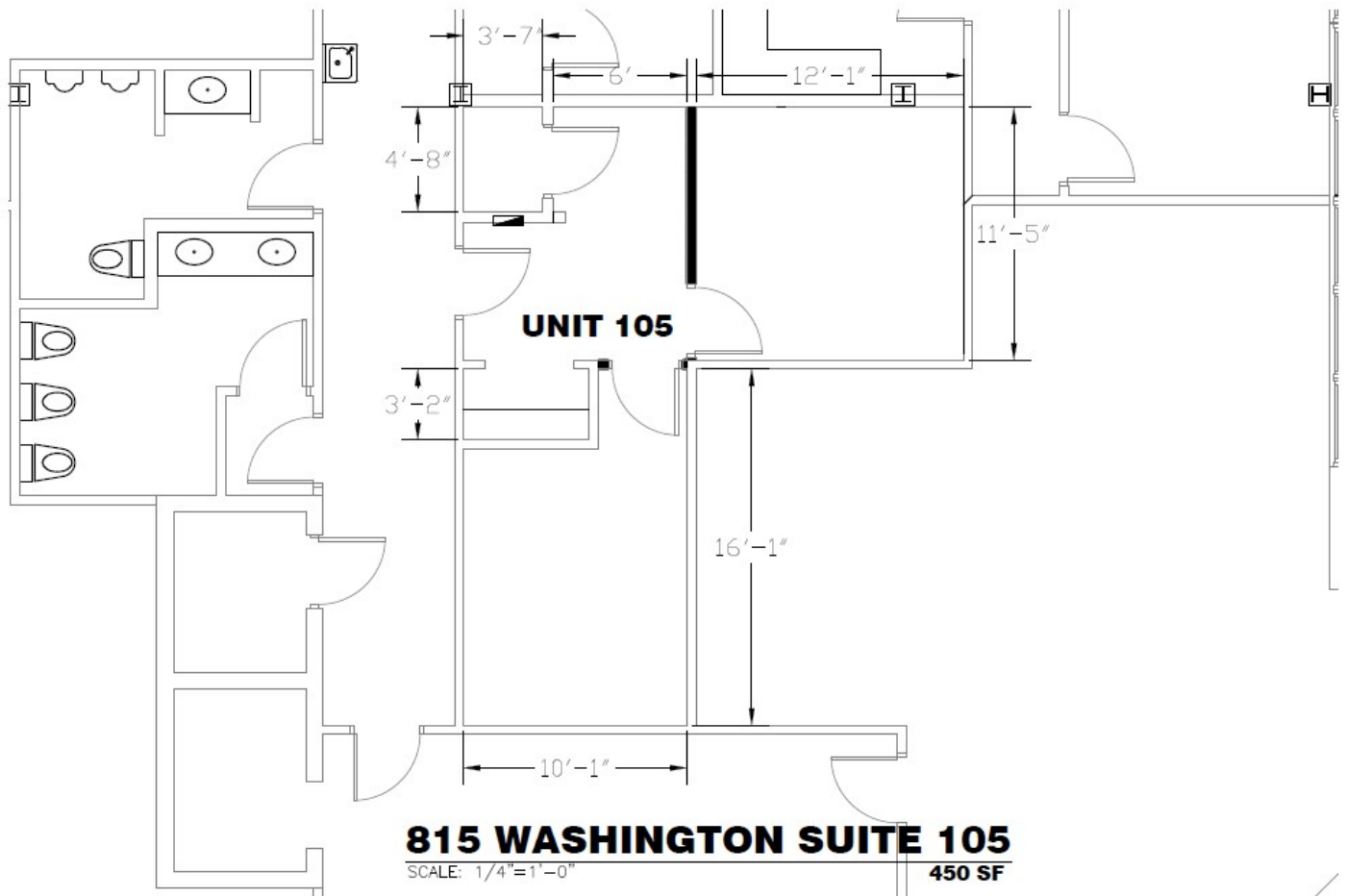
Indian River County: 772.778.4885

FLOOR PLAN

Unit 105

City Square Professional Center

815 S Washington Avenue, Titusville, FL, 32780



450 SF



CHARLES A. VON STEIN, INC.

Commercial Property Management,

Sales & Leasing Specialists since 1963

626 Old Dixie Highway SW

CONTACT INFO:

Brevard County: 321.725.1961

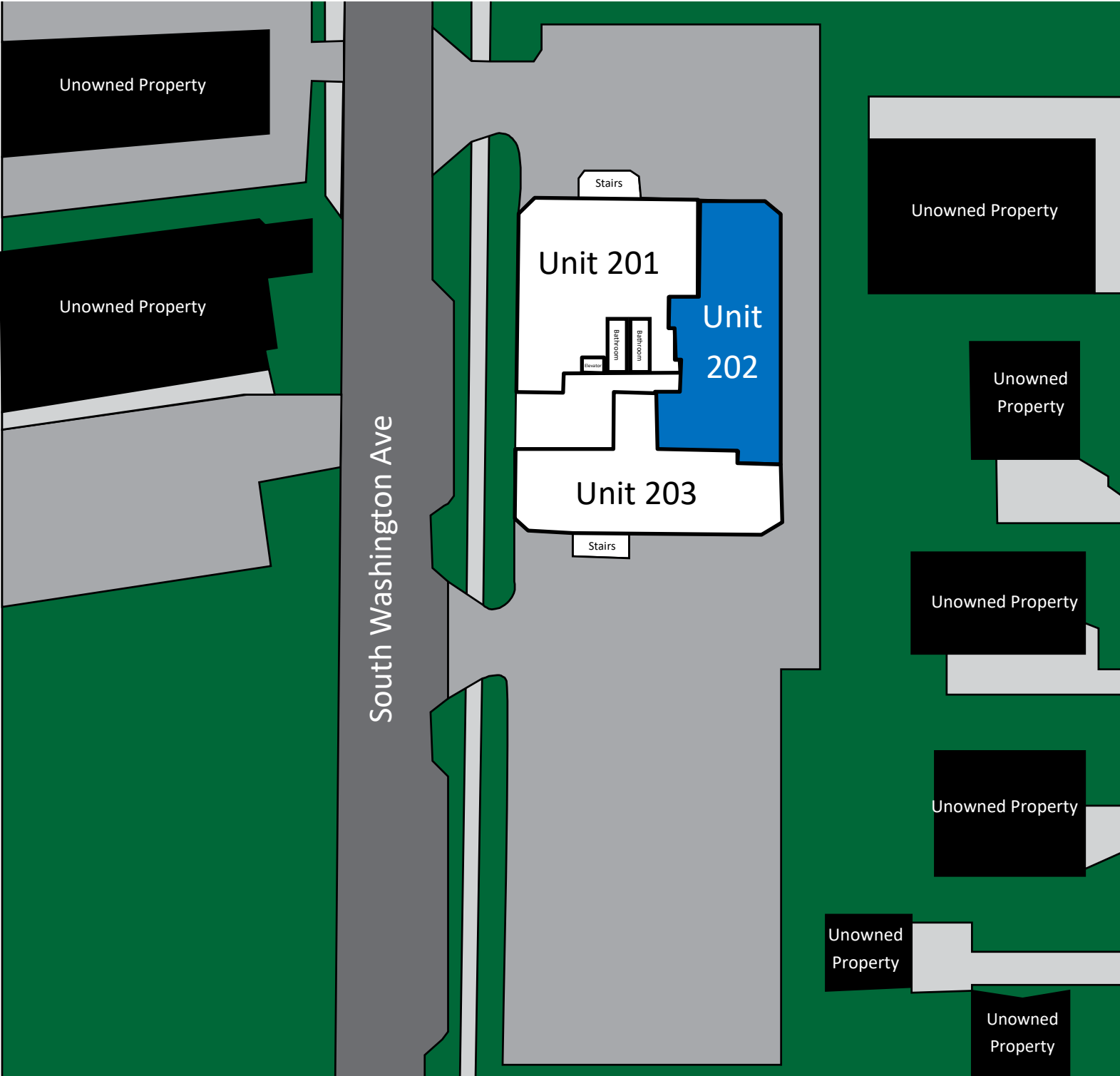
Indian River County: 772.778.4885

SITE PLAN

Second Floor

City Square Professional Center

815 S Washington Avenue, Titusville, FL, 32780



CHARLES A. VON STEIN, INC.
*Commercial Property Management,
Sales & Leasing Specialists since 1963*
626 Old Dixie Highway SW
Vero Beach, FL 32962
www.vscrc.com

CONTACT INFO:
Brevard County: 321.725.1961
Indian River County: 772.778.4885
Fax: 772.778.4908
Leasing: leasing@vscrc.com

AVAILABLE UNITS

Second Floor

City Square Professional Center

815 S Washington Avenue, Titusville, FL, 32780

Unit	Size		Rate		Monthly Rate	Utilities Included				Details
						Water	Electric	Trash	Cable	
202	2,683	SF	\$17.00	SF/ YR	\$3,800.92	YES	YES	YES	NO	Recently Renovated Office Space



CHARLES A. VON STEIN, INC.
Commercial Property Management,
Sales & Leasing Specialists since 1963
626 Old Dixie Highway SW

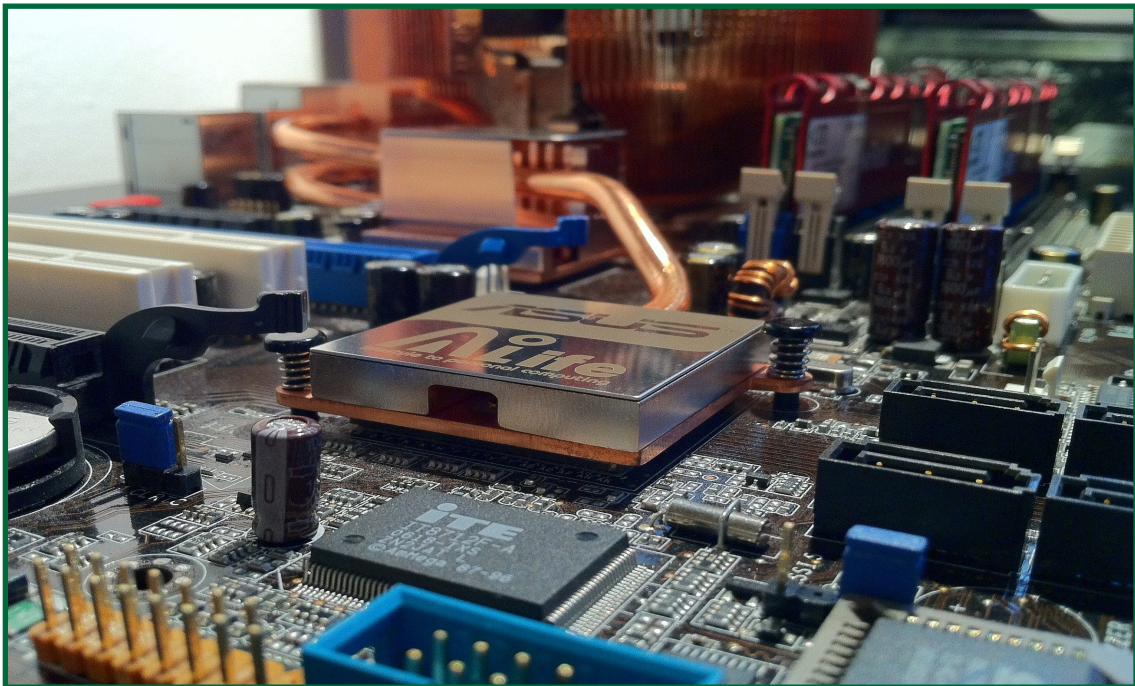
CONTACT INFO:
Brevard County: 321.725.1961
Indian River County: 772.778.4885

Economy of Titusville



Titusville commands a diversified and developed local economy. This is demonstrated by Titusville's encompassing range of industries and occupations available to the local population. Investors and tenants alike will benefit from occupying space in this flourishing

environment. The economy of Titusville itself is anchored by a diverse cluster of significant employers, insulating the region from instability.



CHARLES A. VON STEIN, INC.

*Commercial Property Management,
Sales & Leasing Specialists since 1963*
626 Old Dixie Highway SW
Vero Beach, FL 32962
www.vscrc.com

CONTACT INFO:

Brevard County:	321.725.1961
Indian River County:	772.778.4885
Fax:	772.778.4908
Leasing:	leasing@vscrc.com

EMPLOYMENT IN TITUSVILLE

City Square Professional Center

815 S Washington Avenue, Titusville, FL, 32780

Major Employers in Titusville

- **Kennedy Space Center (NASA)** - Space exploration and services (Includes federal employees and contract positions)
- **Parrish Medical Center (PMC)** - Health services provider
- **Knight's Armament** - Weapons, firearms, and munitions manufacturer
- **Professional Aircraft Accessories** - Aviation components manufacturer
- **Boeing** - Aerospace (office)
- **Barn Light Electric** - Electrical fixtures manufacturer
- **Ecklers Industries** - Automotive parts and components
- **Blue Origin** - Rocket manufacturer
- **Astro-tech (Lockheed Martin)** - Aerospace components assembly
- **SpaceX** - Rocket manufacturer/launch operations
- **Paragon Plastics** - Thermos-formed plastic maker
- **Space Coast Regional Airport** - Helicopter training, weightless training, warbird museum and airport services



CHARLES A. VON STEIN, INC.

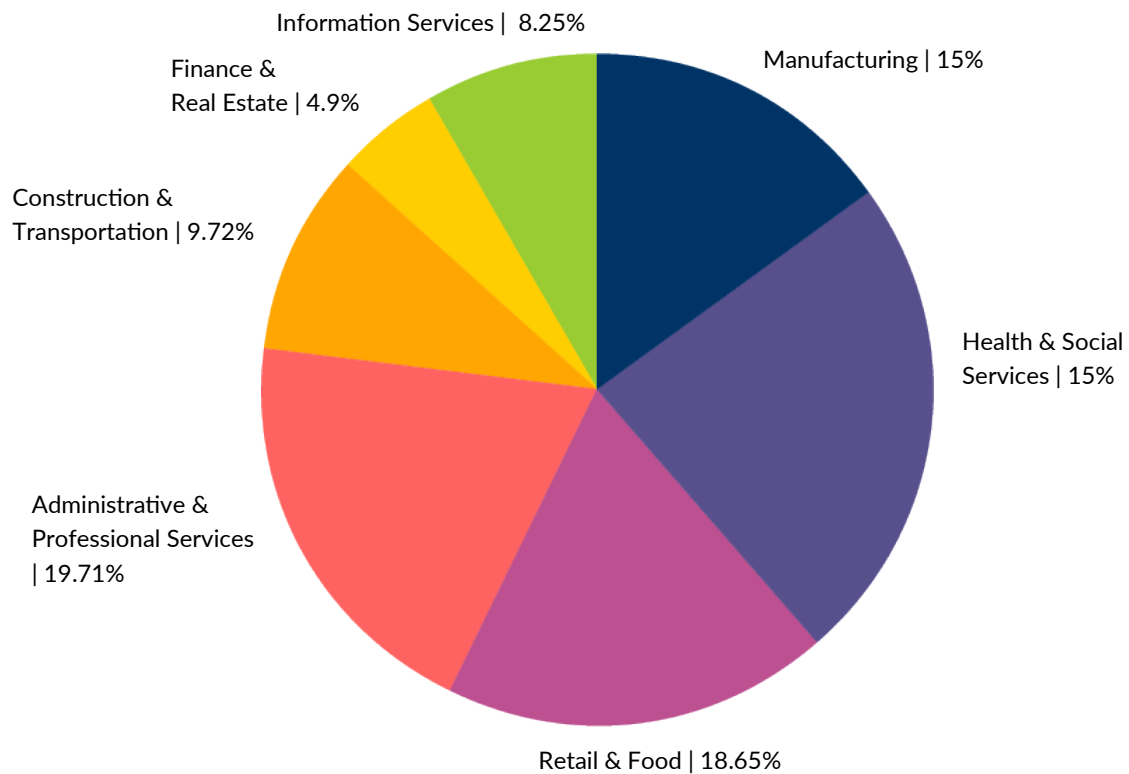
*Commercial Property Management,
Sales & Leasing Specialists since 1963*
626 Old Dixie Highway SW
Vero Beach, FL 32962
www.vscrc.com

CONTACT INFO:

Brevard County:	321.725.1961
Indian River County:	772.778.4885
Fax:	772.778.4908
Leasing:	leasing@vscrc.com

Titusville, FL | Industry Analysis

Titusville hosts a diversified variety of well-developed industries. This flourishing economic ecosystem fosters a robust environment for business that continues to contribute to the ongoing growth in the area. The breakdown of information found on the pie chart below illustrates data from an industry analysis of Titusville, FL. This industry information is helpful in better understanding the ample opportunity built into this area's local economy.



CHARLES A. VON STEIN, INC.

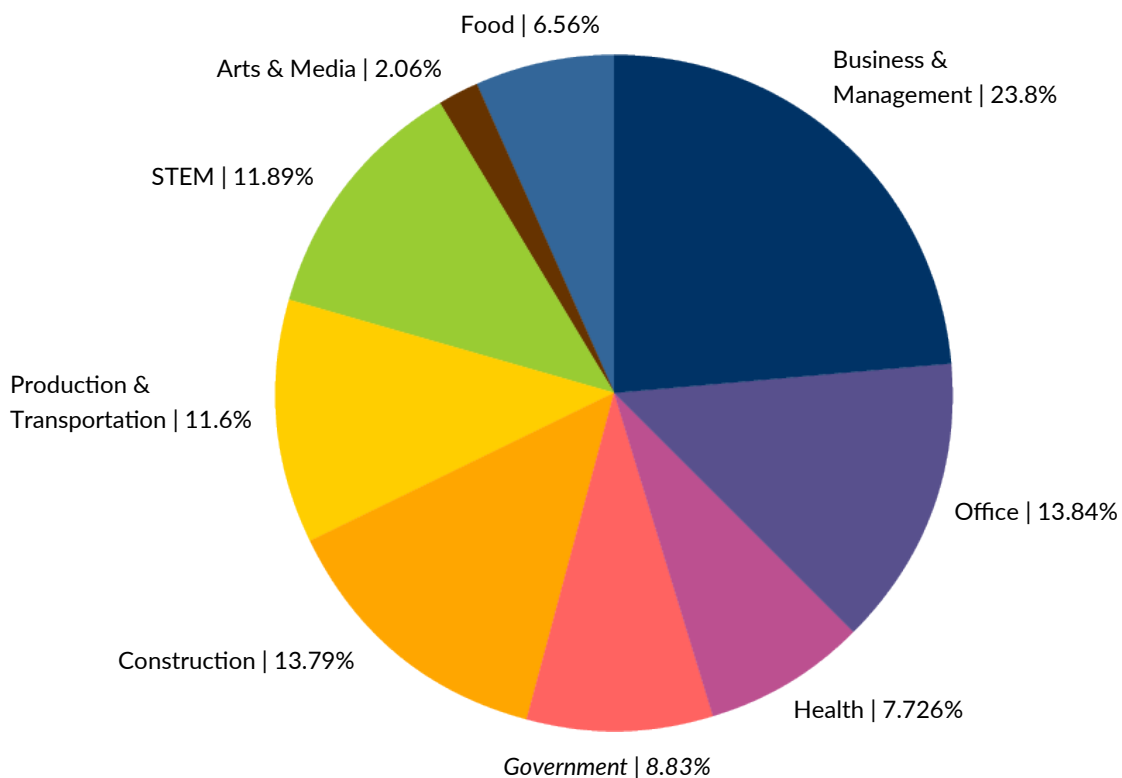
Commercial Property Management,
Sales & Leasing Specialists since 1963
626 Old Dixie Highway SW
Vero Beach, FL 32962
www.vscrc.com

CONTACT INFO:

Brevard County:	321.725.1961
Indian River County:	772.778.4885
Fax:	772.778.4908
Leasing:	leasing@vscrc.com

Titusville, FL | Occupations Analysis

Titusville also offers a large variety of occupations. This diversified economic ecosystem fosters a healthy job market that helps cultivate ongoing growth in the area. The compilation of information found on the pie chart below illustrates data from an occupation analysis of Titusville, FL. This employment information is an illuminating tool for better understanding the makeup of what Titusville has to offer both consumers and investors alike.



CHARLES A. VON STEIN, INC.

Commercial Property Management,
Sales & Leasing Specialists since 1963
626 Old Dixie Highway SW
Vero Beach, FL 32962
www.vscrc.com

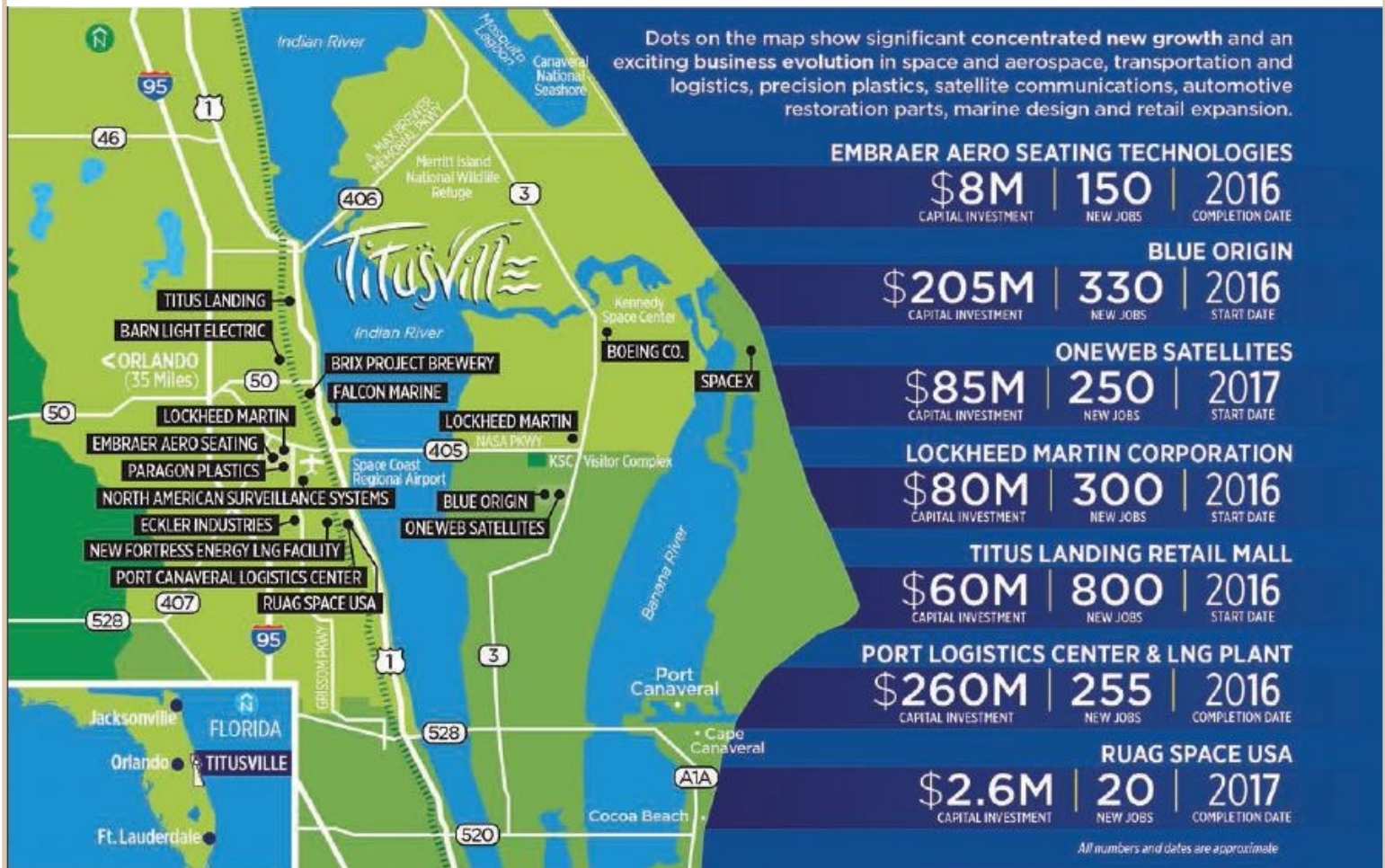
CONTACT INFO:

Brevard County: 321.725.1961
Indian River County: 772.778.4885
Fax: 772.778.4908
Leasing: leasing@vscrc.com

ECONOMIC GROWTH

City Square Professional Center

815 S Washington Avenue, Titusville, FL, 32780



CHARLES A. VON STEIN, INC.
 Commercial Property Management,
 Sales & Leasing Specialists since 1963
 626 Old Dixie Highway SW
 Vero Beach, FL 32962
 www.vscrc.com

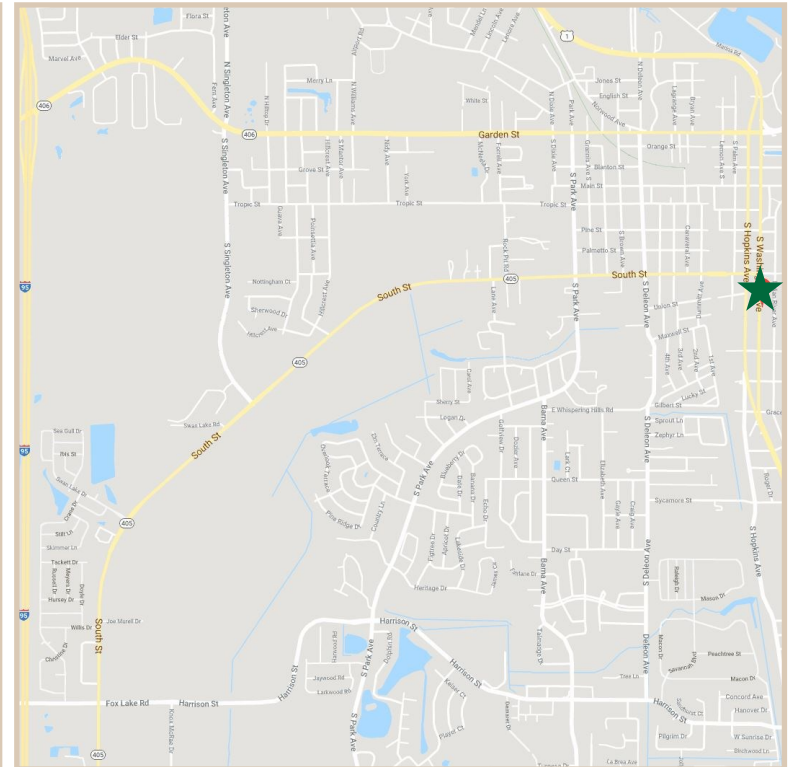
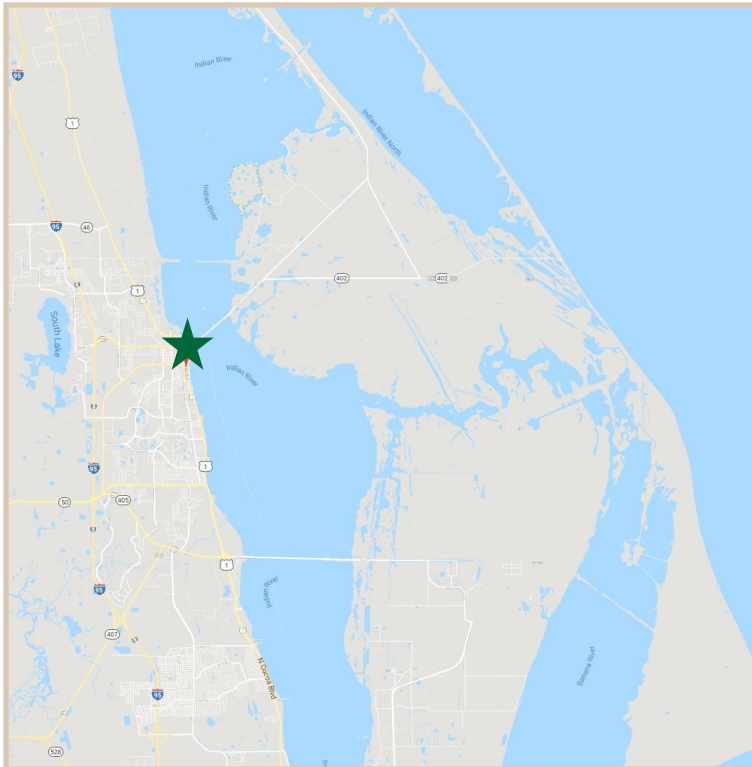
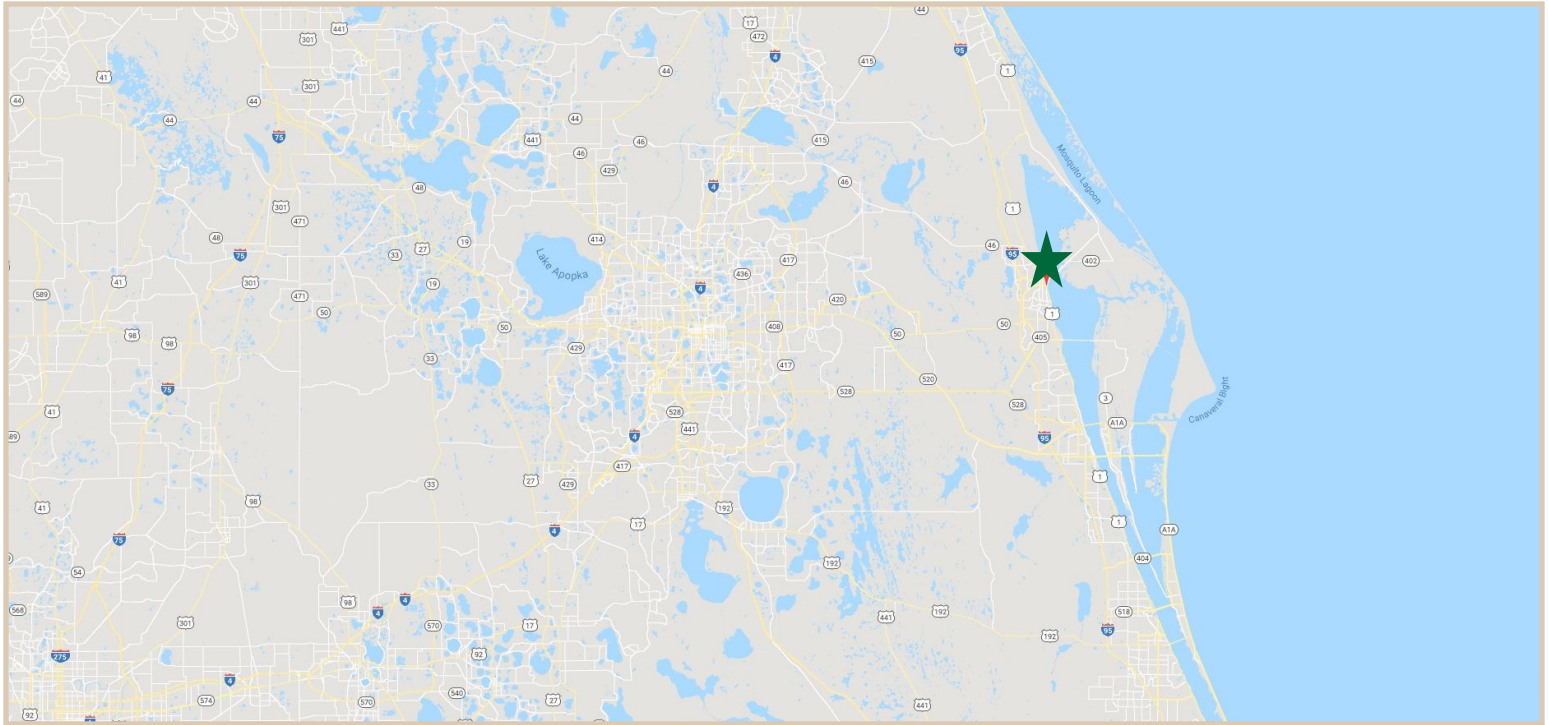
CONTACT INFO:

Brevard County: 321.725.1961
 Indian River County: 772.778.4885
 Fax: 772.778.4908
 Leasing: leasing@vscrc.com

LOCATION MAPS

City Square Professional Center

815 S Washington Avenue, Titusville, FL, 32780



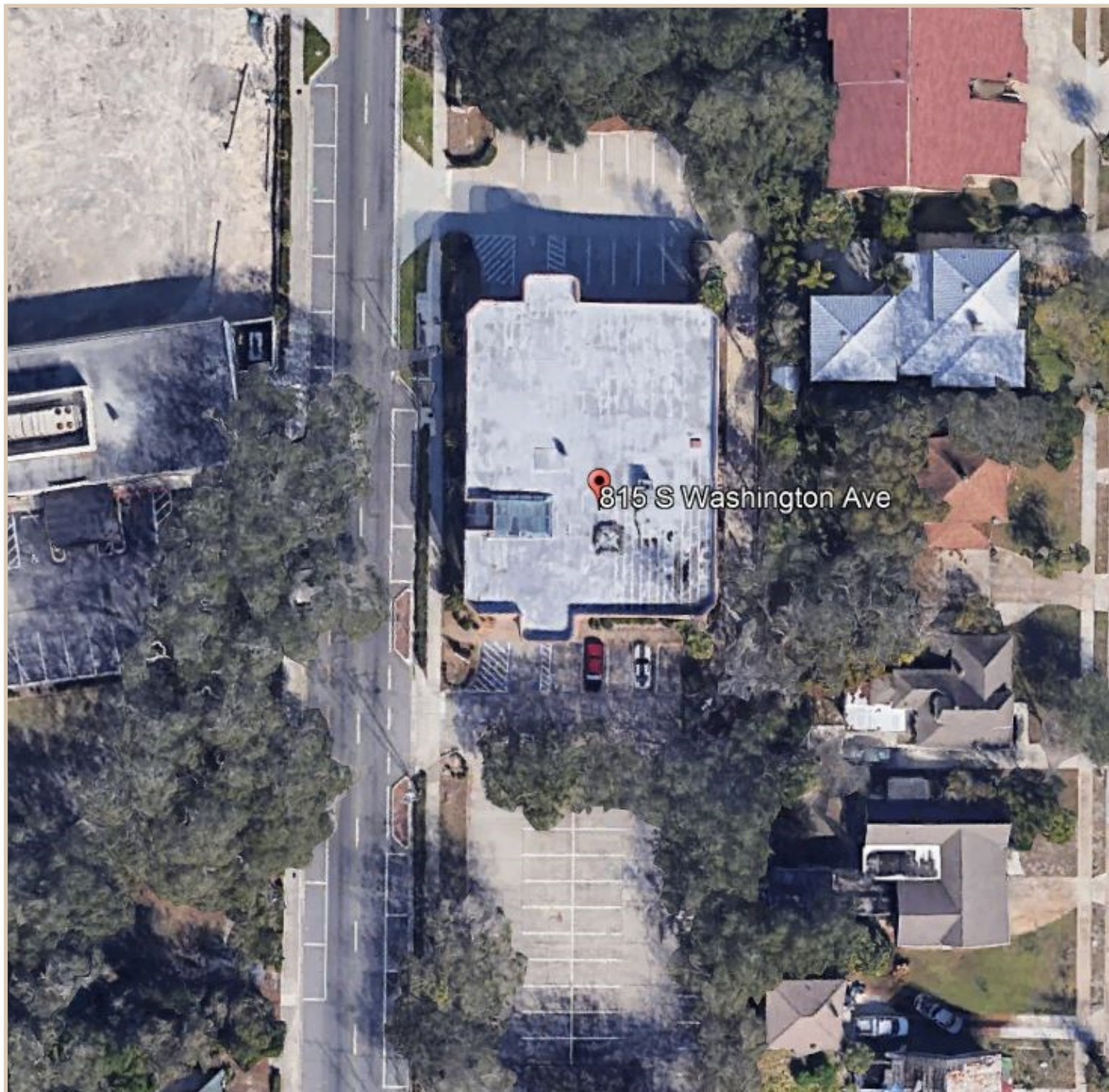
CHARLES A. VON STEIN, INC.
*Commercial Property Management,
Sales & Leasing Specialists since 1963*
626 Old Dixie Highway SW
Vero Beach, FL 32962
www.vscore.com

CONTACT INFO:

Brevard County:
Indian River County:
Fax:
Leasing:

321.725.1961
772.778.4885
772.778.4908
leasing@vscre.com

ALL INFORMATION FURNISHED REGARDING PROPERTY FOR SALE, RENTAL OR FINANCING SOURCES DEEMED RELIABLE, BUT NO WARRANTY OR REPRESENTATION IS MADE AS TO THE ACCURACY THEREOF AND SAME IS SUBMITTED SUBJECT TO ERRORS, OMISSIONS, CHANGE OF PRICE, RENTAL OR OTHER CONDITIONS, PRIOR SALE, LEASING OR FINANCING OR WITHDRAWAL WITHOUT NOTICE.



CHARLES A. VON STEIN, INC.
*Commercial Property Management,
Sales & Leasing Specialists since 1963*
626 Old Dixie Highway SW
Vero Beach, FL 32962
www.vscrc.com

CONTACT INFO:

Brevard County:	321.725.1961
Indian River County:	772.778.4885
Fax:	772.778.4908
Leasing:	leasing@vscrc.com

ADDITIONAL PHOTOS

City Square Professional Center

815 S Washington Avenue, Titusville, FL, 32780



CHARLES A. VON STEIN, INC.
*Commercial Property Management,
Sales & Leasing Specialists since 1963*
626 Old Dixie Highway SW
Vero Beach, FL 32962
www.vscrc.com

CONTACT INFO:

Brevard County:	321.725.1961
Indian River County:	772.778.4885
Fax:	772.778.4908
Leasing:	leasing@vscrc.com

ALL INFORMATION FURNISHED REGARDING PROPERTY FOR SALE, RENTAL OR FINANCING SOURCES DEEMED RELIABLE, BUT NO WARRANTY OR REPRESENTATION IS MADE AS TO THE ACCURACY THEREOF AND SAME IS SUBMITTED SUBJECT TO ERRORS, OMISSIONS, CHANGE OF PRICE, RENTAL OR OTHER CONDITIONS, PRIOR SALE, LEASING OR FINANCING OR WITHDRAWAL WITHOUT NOTICE.