

**Jamison** commercial re  
New York City

489-501  
Ninth Avenue



## Retail and Community Facility For Lease

- New Construction Retail
- Architecturally distinct store front
- Clean space with few columns
- Occupancy Q3 2025
- Close proximity to Hudson Yards, West Chelsea, Theatre District, Columbus Circle
- Close proximity to public transportation
- High foot traffic counts, densely populated neighborhood with a mix of commercial and residential.

## For Lease

### 489 Ninth

Space A: 4,358 sq ft retail  
Space B: 906 (ground)  
3,464 (Lower Level) sq ft  
retail

### 501 Ninth

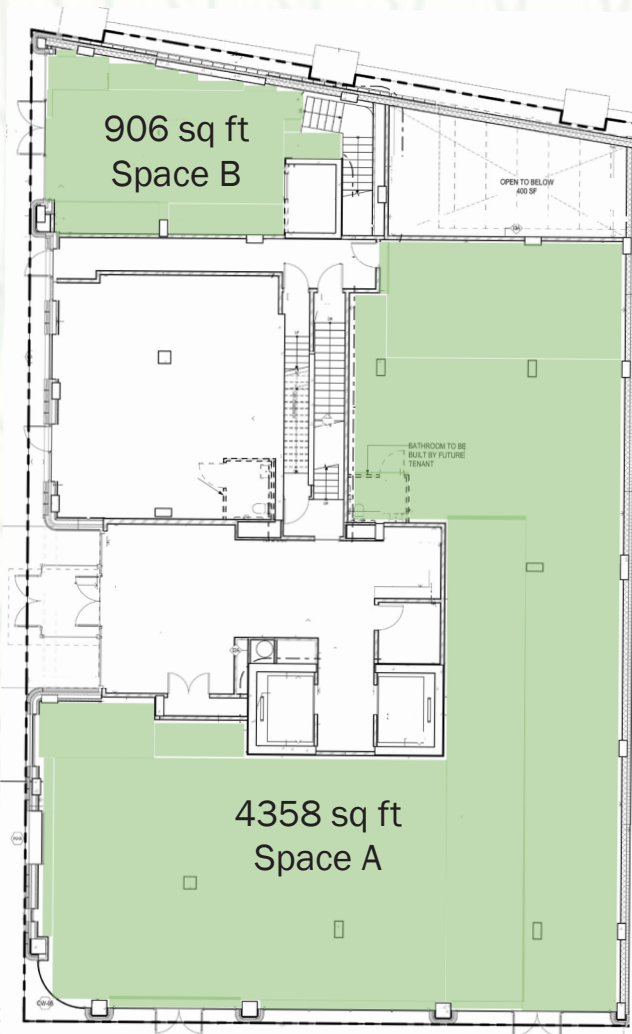
Space A: 3,160 sq ft  
Space B: 712 sq ft (ground  
floor)  
3,201 sq ft (lower level)  
comm facil.

**Jamison** commercial re  
New York City

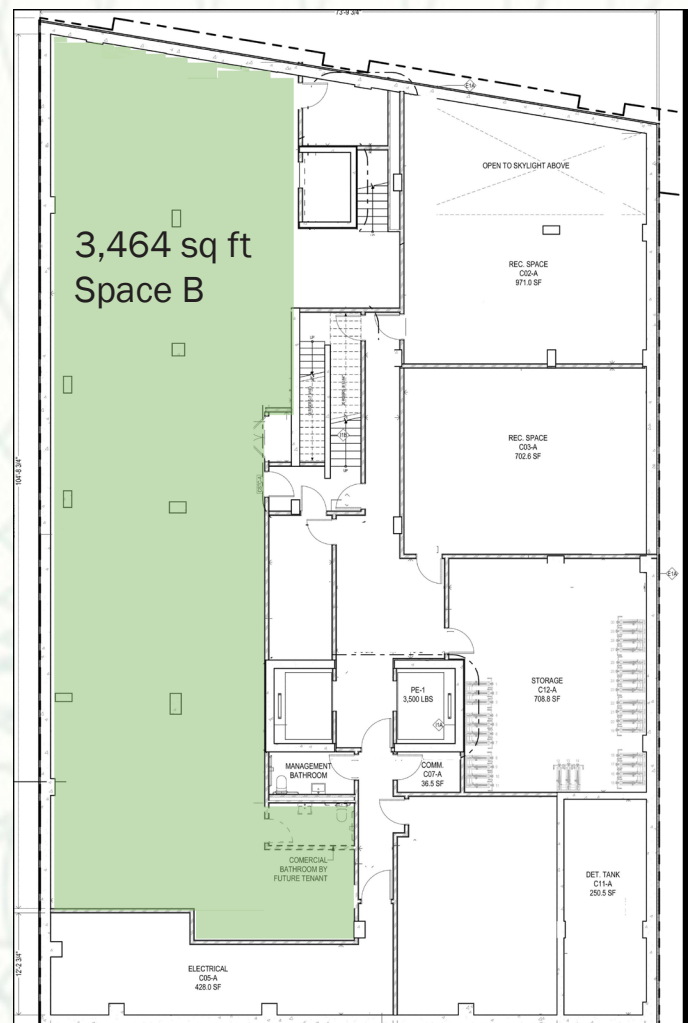
**489-501**  
**Ninth Avenue**

489 Ninth Ave

Space A & B



Lower Level



Jamison Weiner

646-245-3254

[jweiner@Jamisoncommercialre.com](mailto:jweiner@Jamisoncommercialre.com)

**Jamison** commercial re  
New York City

**489-501**  
**Ninth Avenue**

## 501 Ninth Ave

### Space A & B

### Lower Level

