

FOR LEASE

1133 FRANCISO BOULEVARD EAST

1133 Franciso Boulevard East, San Rafael, CA 94901



The information herein has not been independently verified by the real estate brokers. Interested parties should have experts of their choice inspect and verify all information. Real estate brokers are not experts with respect to building construction, environmental, legal, tax, and other such matters.



JAMES SCHULTZ

CA LIC #02232628

(415) 762-8079

james@meridiancommercial.com

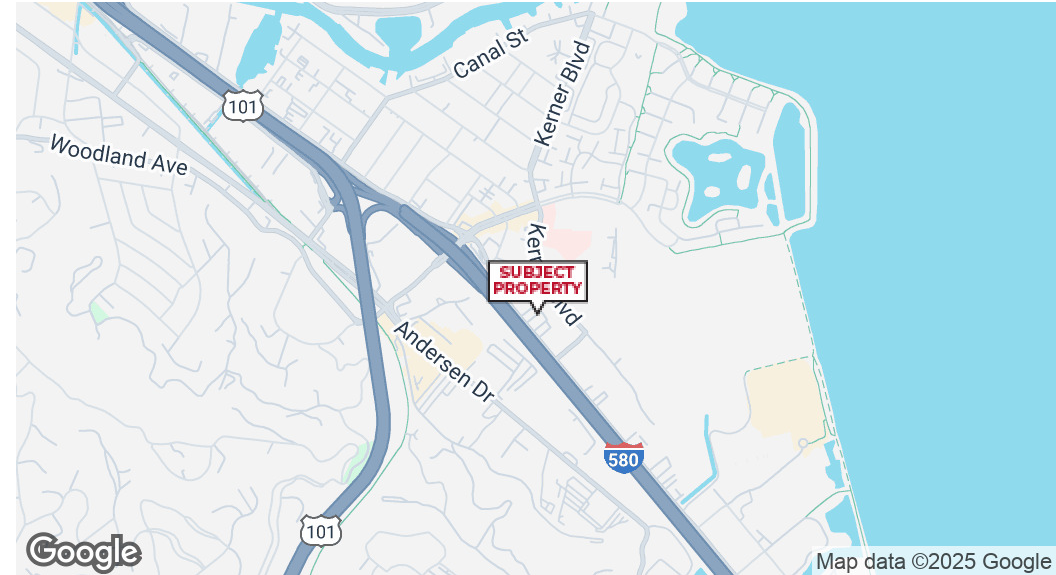
17 E. Sir Francis Drake Blvd., Suite 203 | Larkspur, CA 94939 | <https://www.meridiancommercial.com>

FOR LEASE

Property Summary

1133 FRANCISCO BOULEVARD EAST

1133 Franciso Boulevard East, San Rafael, CA 94901



LOCATION DESCRIPTION

1133 Francisco Boulevard East offers an exceptional location for a dance, exercise, Pilates, or yoga studio in the heart of San Rafael's vibrant commercial corridor. The property sits just off the Highway 101 interchange, providing excellent visibility and easy access for clients traveling from all parts of Marin County.

The building enjoys prominent street frontage along Francisco Boulevard, ensuring strong signage opportunities and exposure to steady local traffic. Ample on-site parking makes it convenient for students attending scheduled classes throughout the day, including early morning and evening sessions.

PROPERTY HIGHLIGHTS

- Modern, versatile space
- Convenient location with excellent visibility
- Ample parking available
- High ceilings and expansive windows
- Suitable for office, retail, showroom, or studio use

PROPERTY DESCRIPTION

Large, open floor plates and high ceilings make the interior well-suited for movement-based uses. The space has mirrored walls, hardwood floors, and studio lighting. Abundant natural light from oversized windows creates a bright, welcoming atmosphere ideal for Pilates or yoga practice. The space boasts a private entry way as well as private bathrooms and waiting areas.

OFFERING SUMMARY

Lease Rate:	\$1.70 SF/month (MG)
Available SF:	±1,210 - 3,690 SF
Building Size:	±16,614 SF
Property Type:	Office
Zoning:	GC

JAMES SCHULTZ

CA LIC #02232628
(415) 762-8079

james@meridiancommercial.com

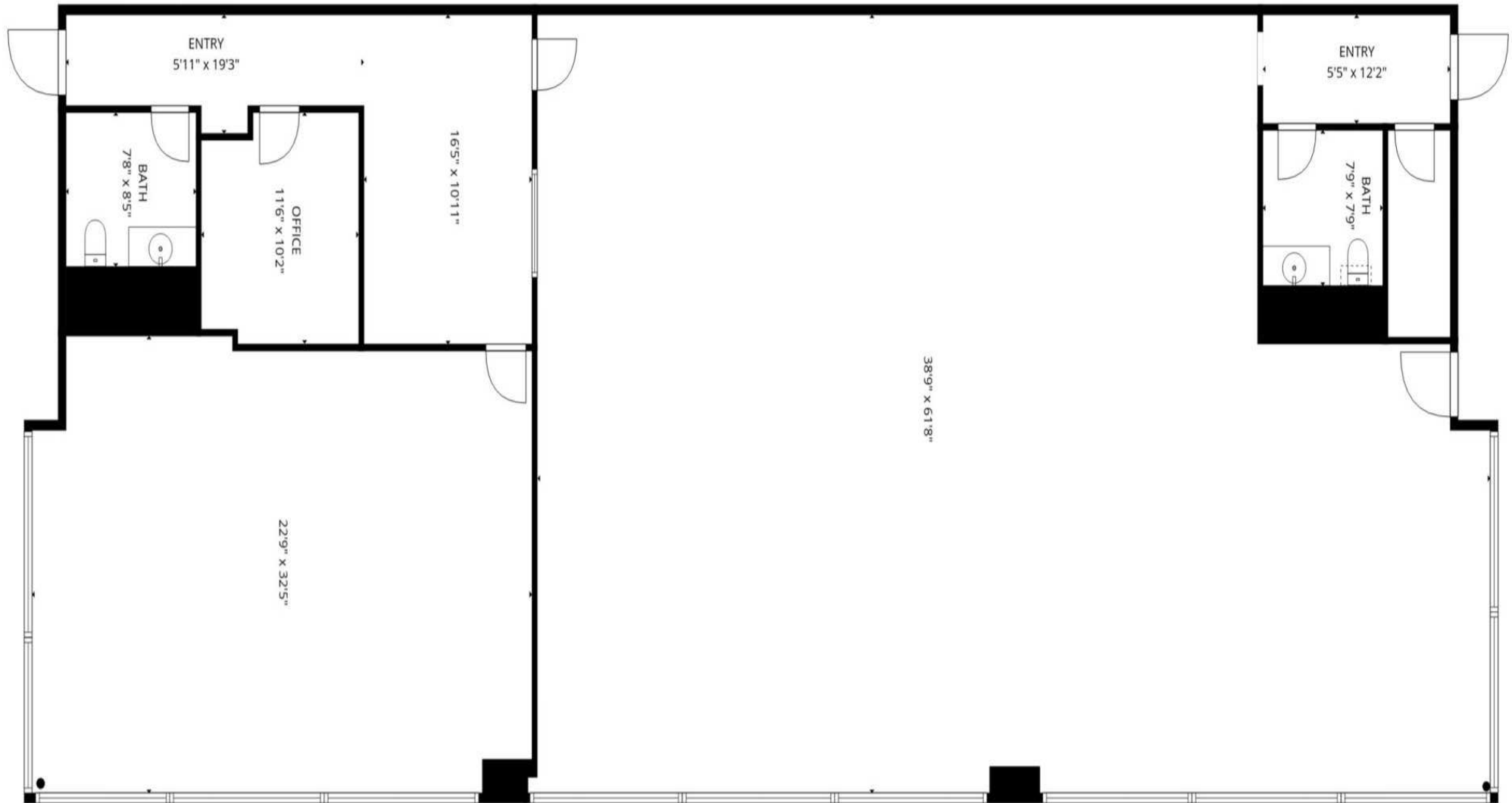


FOR LEASE

Floor Plans

1133 FRANCISCO BOULEVARD EAST

1133 Franciso Boulevard East, San Rafael, CA 94901



JAMES SCHULTZ

CA LIC #02232628

(415) 762-8079

james@meridiancommercial.com



FOR LEASE

Additional Photos

1133 FRANCISCO BOULEVARD EAST

1133 Franciso Boulevard East, San Rafael, CA 94901



JAMES SCHULTZ

CA LIC #02232628

(415) 762-8079

james@meridiancommercial.com

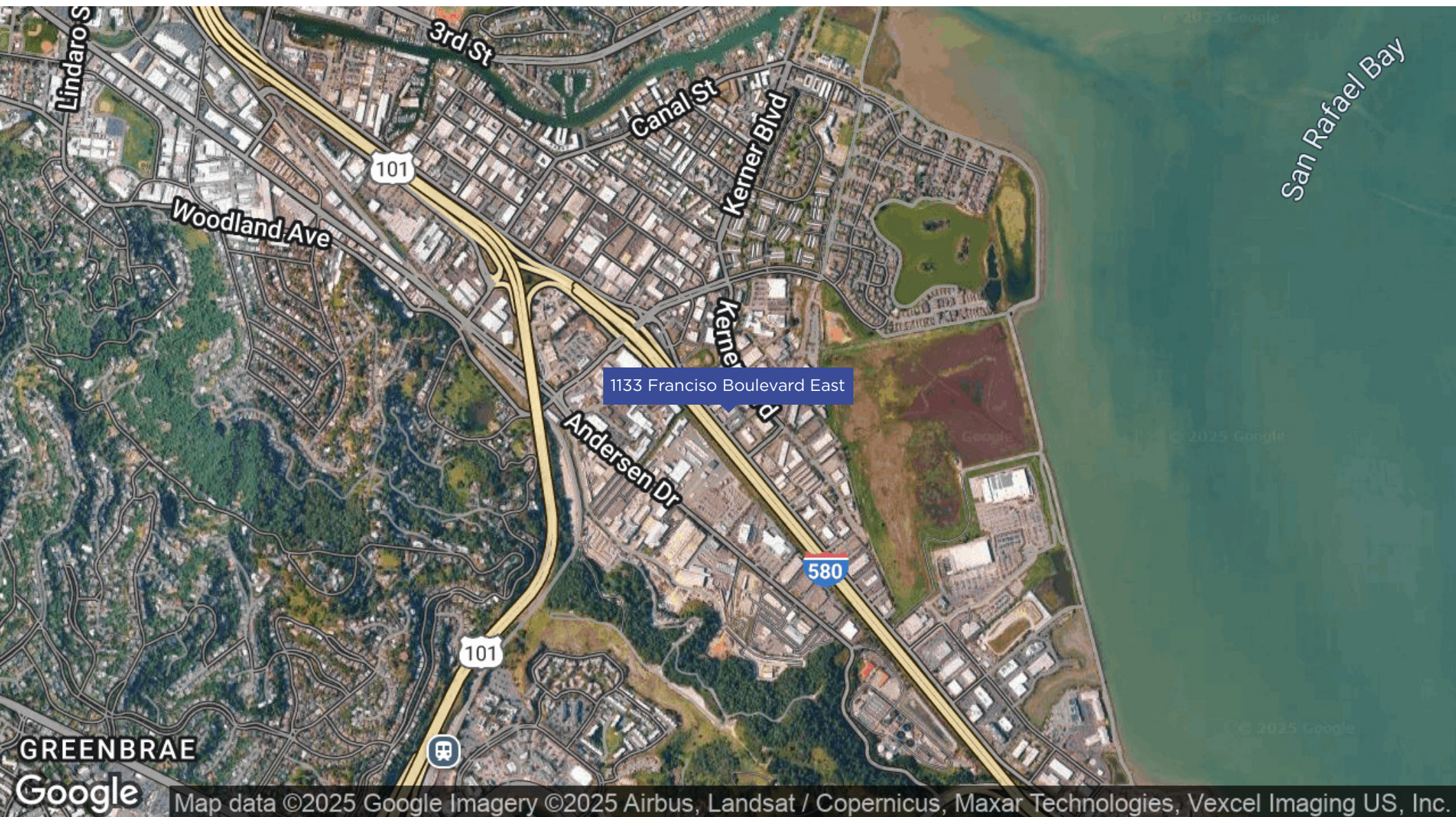


FOR LEASE

Aerial Map

1133 FRANCISO BOULEVARD EAST

1133 Franciso Boulevard East, San Rafael, CA 94901



Map data ©2025 Google Imagery ©2025 Airbus, Landsat / Copernicus, Maxar Technologies, Vexcel Imaging US, Inc.

JAMES SCHULTZ

CA LIC #02232628

(415) 762-8079

james@meridiancommercial.com



17 E. Sir Francis Drake Blvd., Suite 203 | Larkspur, CA 94939 | <https://www.meridiancommercial.com>