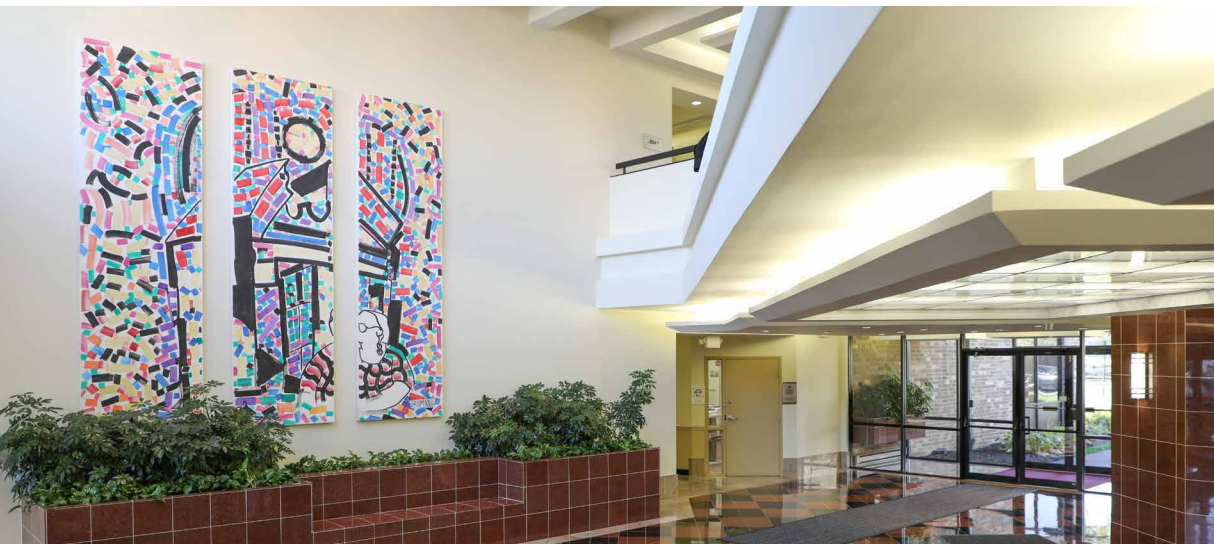


FOR LEASE

BALTIMORE COUNTY, MD

3104-3106 LORD BALTIMORE DR

EXECUTIVE PARK WEST | 3100-3300 LORD BALTIMORE DRIVE | WINDSOR MILL, MD 21244



PROPERTY HIGHLIGHTS:

- ▶ NEW FITNESS CENTER AND CONFERENCE ROOM
- ▶ TWELVE BUILDINGS CONSISTING OF 450,000 SF IN A GATED 30-ACRE BUSINESS PARK
- ▶ ON-SITE DAYCARE AND RESTAURANT
- ▶ WITHIN 3 MILES OF SOCIAL SECURITY ADMINISTRATION HEADQUARTERS AND CENTERS FOR MEDICARE AND MEDICAID SERVICES
- ▶ WITHIN 2 MILES OF BELTWAY EXIT 17 AT SECURITY BOULEVARD AND 1 MILE OF BELTWAY EXIT 18 AT LIBERTY ROAD

DAVID S. BROWN
ENTERPRISES, LTD.

KEVIN KEANE | SVP, OFFICE LEASING
410.581.2519 | KEVIN@DAVIDSBROWN.COM

BRENT MANGUM | VP, OFFICE LEASING
410.581.2518 | BRENT@DAVIDSBROWN.COM

RYAN BARRETT | LEASING ASSOCIATE
410.581.2521 | RBARRETT@DAVIDSBROWN.COM

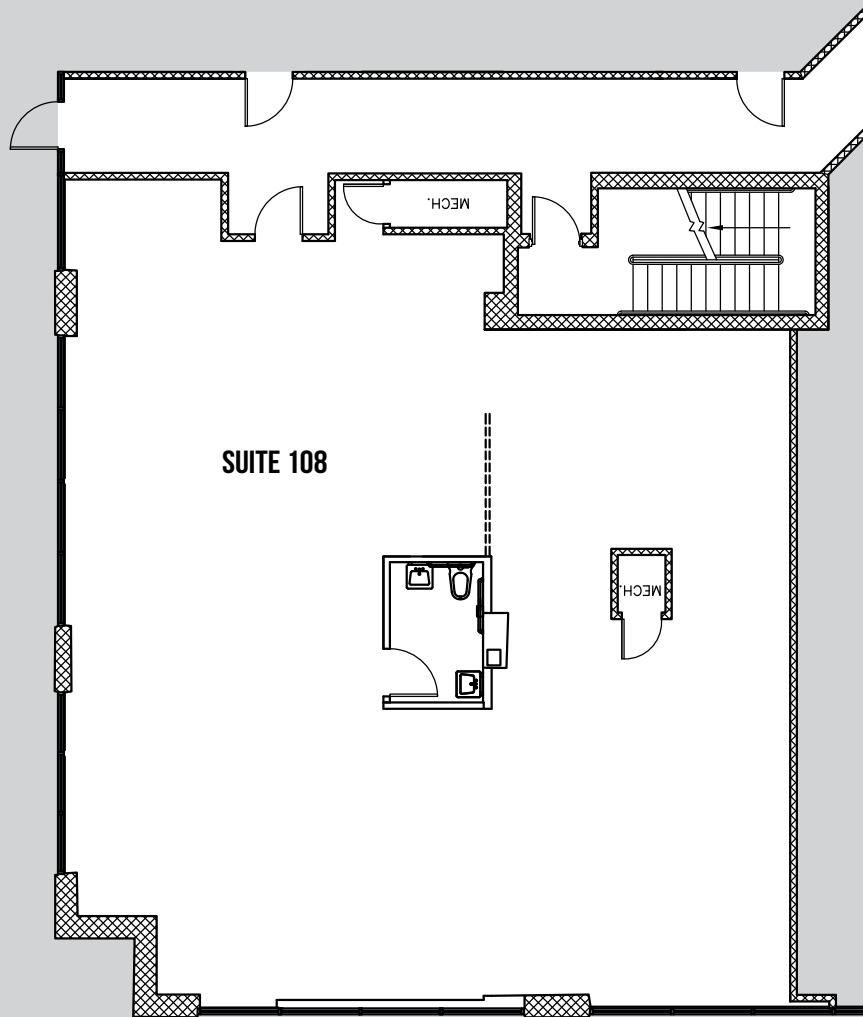
DAVID S. BROWN ENTERPRISES | 100 PAINTERS MILL ROAD, OWINGS MILLS, MD 21117 | 410.581.2520 | WWW.DAVIDSBROWN.COM |

FOR LEASE

BALTIMORE COUNTY, MD

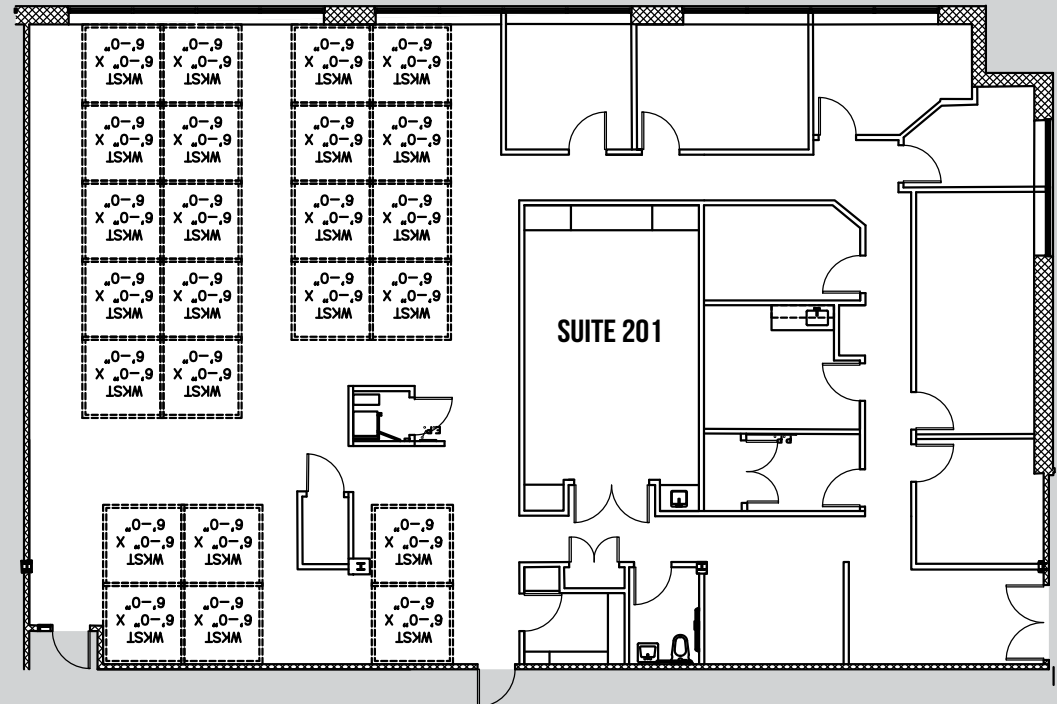
3104 LORD BALTIMORE DR

EXECUTIVE PARK WEST | 3100-3300 LORD BALTIMORE DRIVE | WINDSOR MILL, MD 21244



AVAILABLE

- ▶ SUITE 108 - 2,279 SF
- ▶ SUITE 201 - 4,325 SF

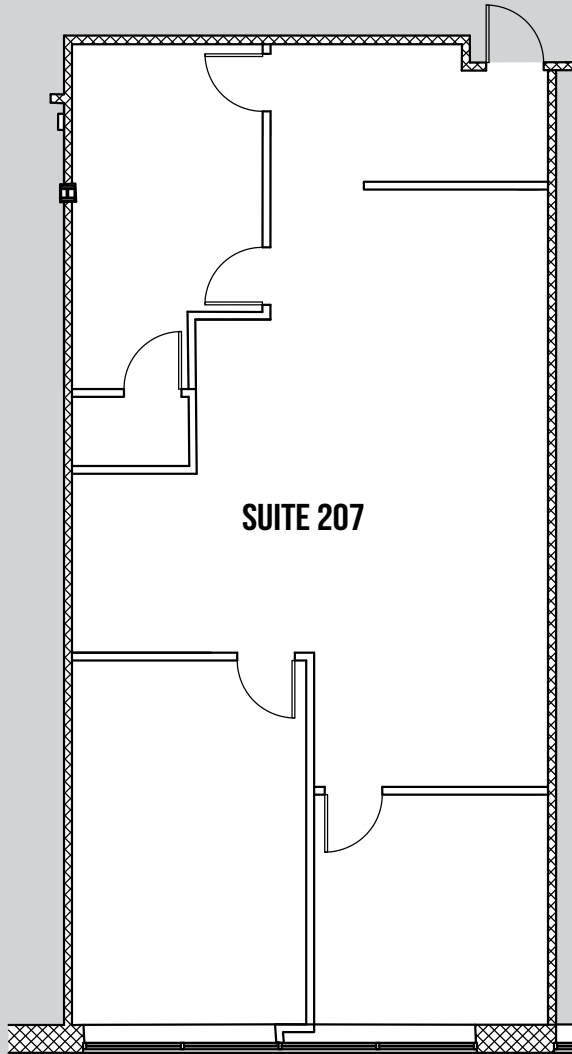


FOR LEASE

BALTIMORE COUNTY, MD

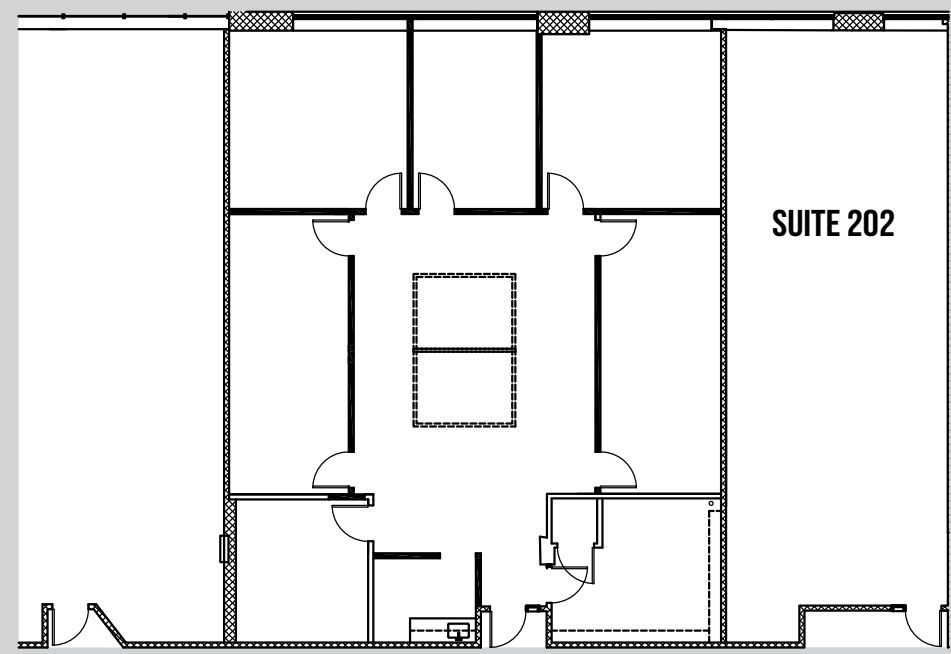
3104 LORD BALTIMORE DR

EXECUTIVE PARK WEST | 3100-3300 LORD BALTIMORE DRIVE | WINDSOR MILL, MD 21244



AVAILABLE

- ▶ SUITE 202 - 2,202 SF
- ▶ SUITE 207 - 1,346 SF



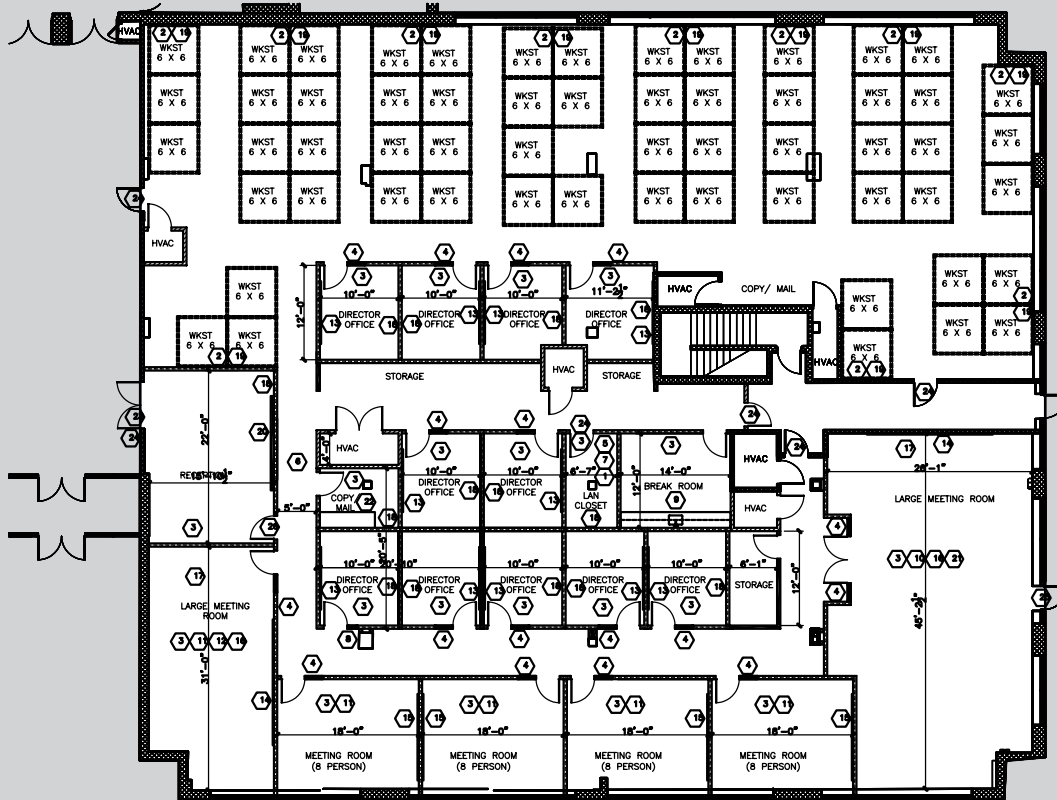
FOR LEASE

BALTIMORE COUNTY, MD

3106 LORD BALTIMORE DR

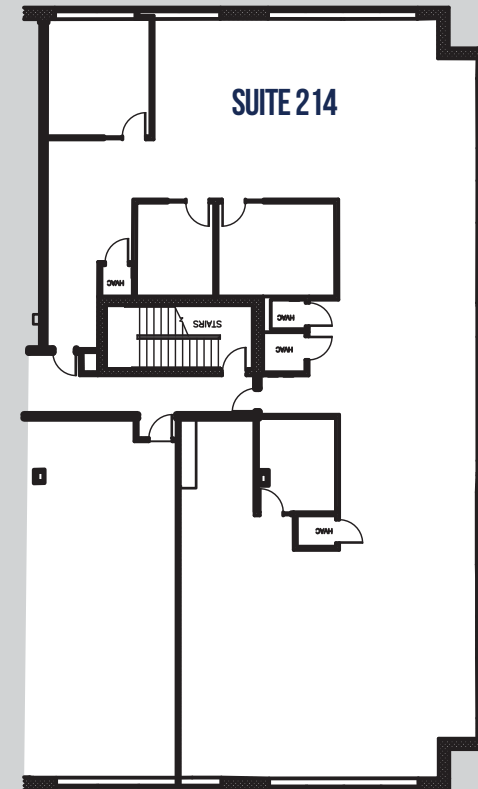
EXECUTIVE PARK WEST | 3100-3300 LORD BALTIMORE DRIVE | WINDSOR MILL, MD 21244

SUITES 100-106



AVAILABLE

- ▶ SUITE 100-106: 11,076 SF
- ▶ SUITE 214: 4,531 SF



FOR LEASE

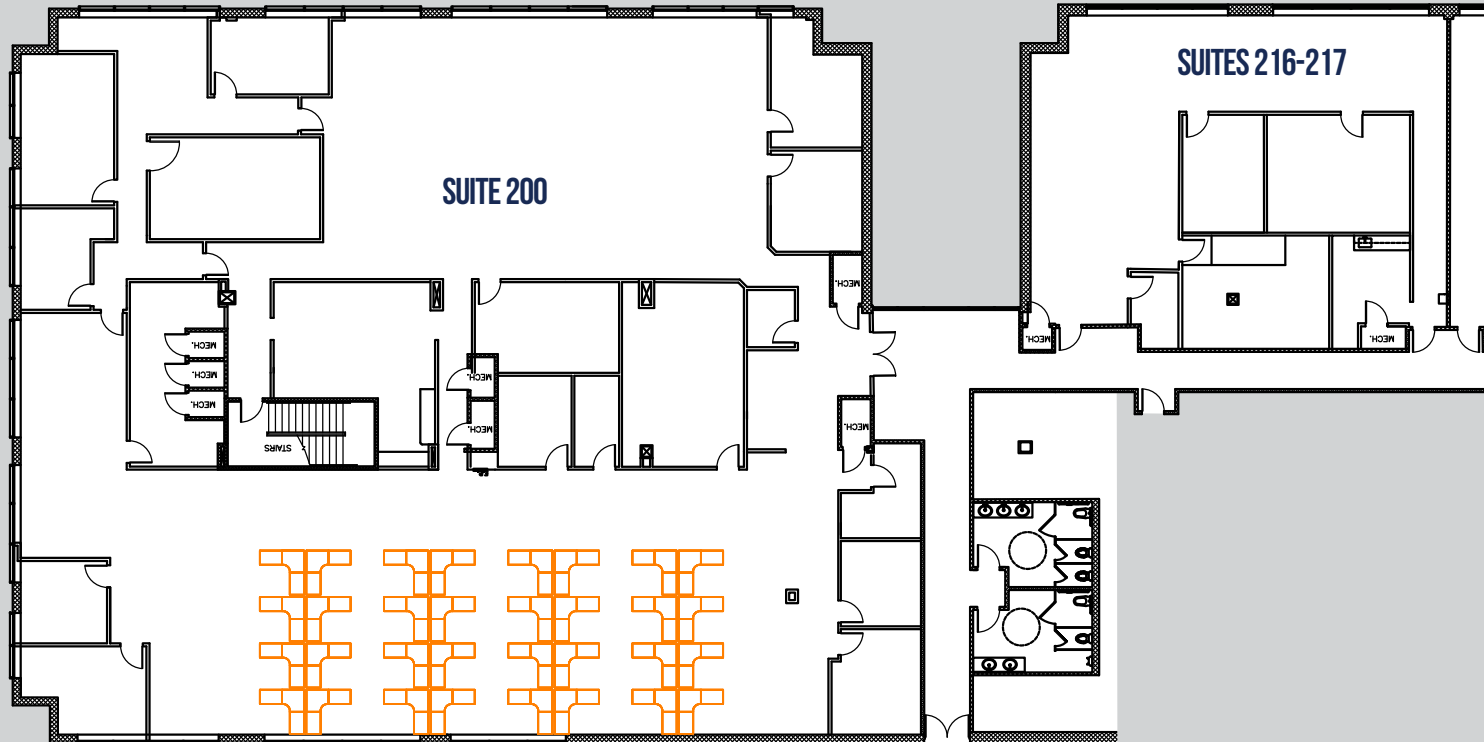
BALTIMORE COUNTY, MD

3106 LORD BALTIMORE DR

EXECUTIVE PARK WEST | 3100-3300 LORD BALTIMORE DRIVE | WINDSOR MILL, MD 21244

AVAILABLE

- ▶ SUITE 200: 11,635 SF
- ▶ SUITE 216-217: 2,700 SF



3104-3106 LORD BALTIMORE DR

EXECUTIVE PARK WEST | 3100-3300 LORD BALTIMORE DRIVE | WINDSOR MILL, MD 21244

MAP



DISTANCE TO:

- CMS: 2 Miles
- SSA: 3 Miles
- BWI: 15 Miles
- I-695 & I-70 Interchange: 3 Miles