

Available Medical Office Space for Lease

# Burbank Medical Plazas I&II

201 & 191 SOUTH BUENA VISTA STREET, BURBANK, CA 91505



For leasing information:

*Dasche Foley*

Director, Leasing

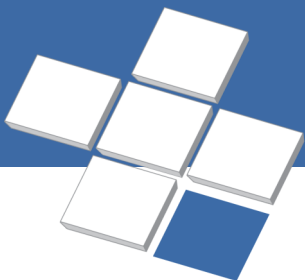
Phone: 858-794-1900

[dfoley@pmbres.com](mailto:dfoley@pmbres.com)

[www.pmbres.com](http://www.pmbres.com)

CA Lic. 02111297

- Premium medical office space available for lease
- Directly across the street to Providence Saint Joseph Medical Center
- 1,000-car parking structure
- Disney Cancer Center located on MOB campus
- On-site Pharmacy and Community Healthcare Urgent Care
- Convenient access to Highway 134 and Interstate 5

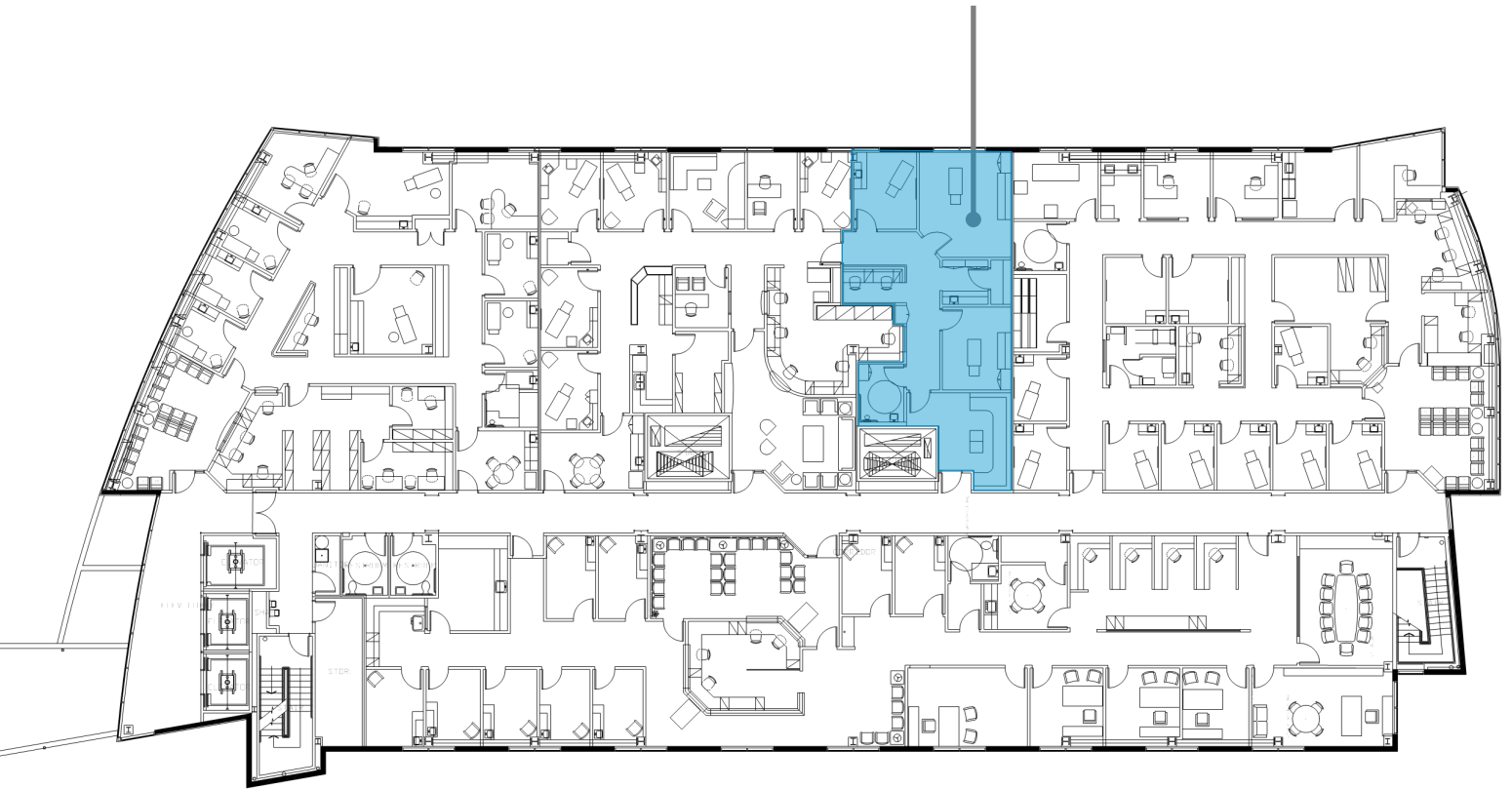


**PMB**  
Real Estate Services  
*Real Estate Management Solutions for Healthcare*



# 201 South Buena Vista Street

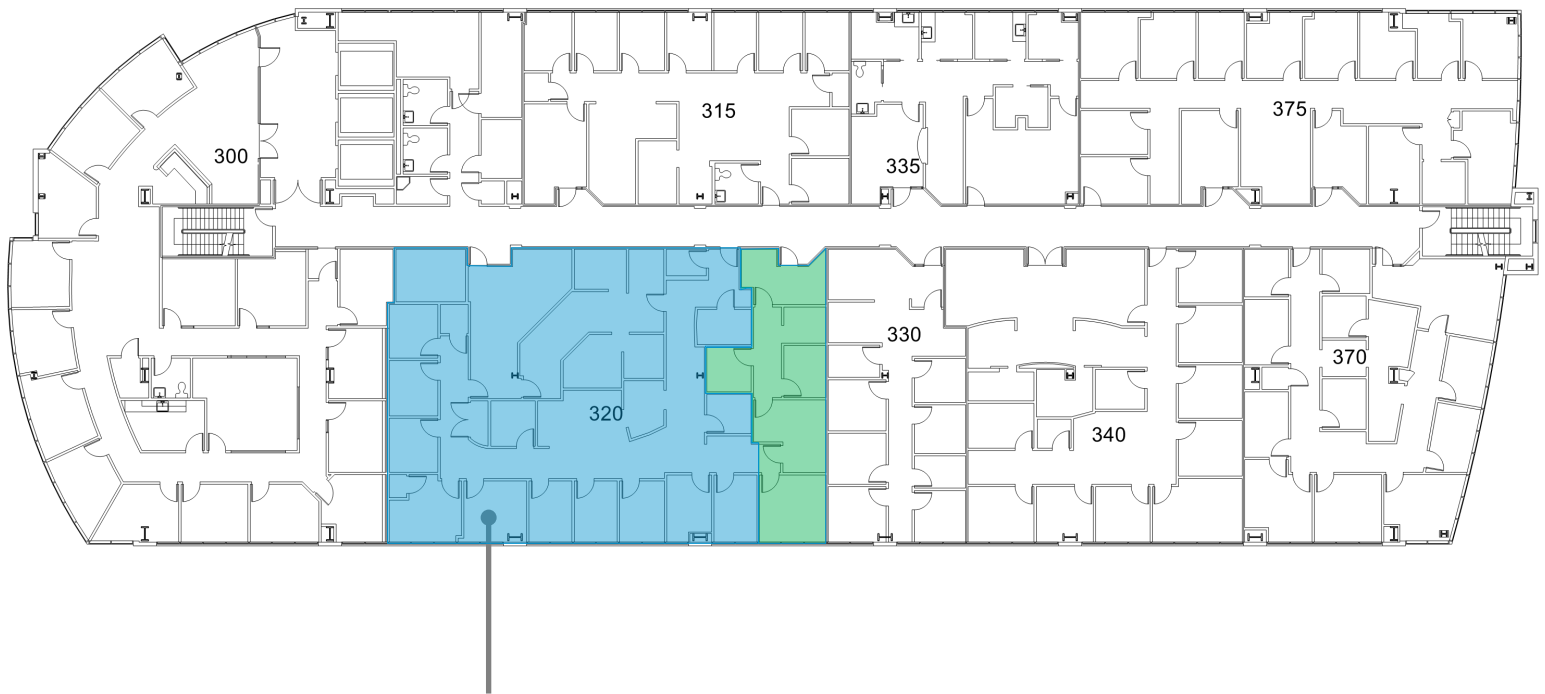
Suite 420  
1,207 RSF



**PMB Real Estate Services**  
*Real Estate Management Solutions for Healthcare*

Burbank Medical Plaza I

# 191 South Buena Vista Street



## Suite 320

Divisible between  
3,411 - 4,211 RSF



**PMB Real Estate Services**  
*Real Estate Management Solutions for Healthcare*

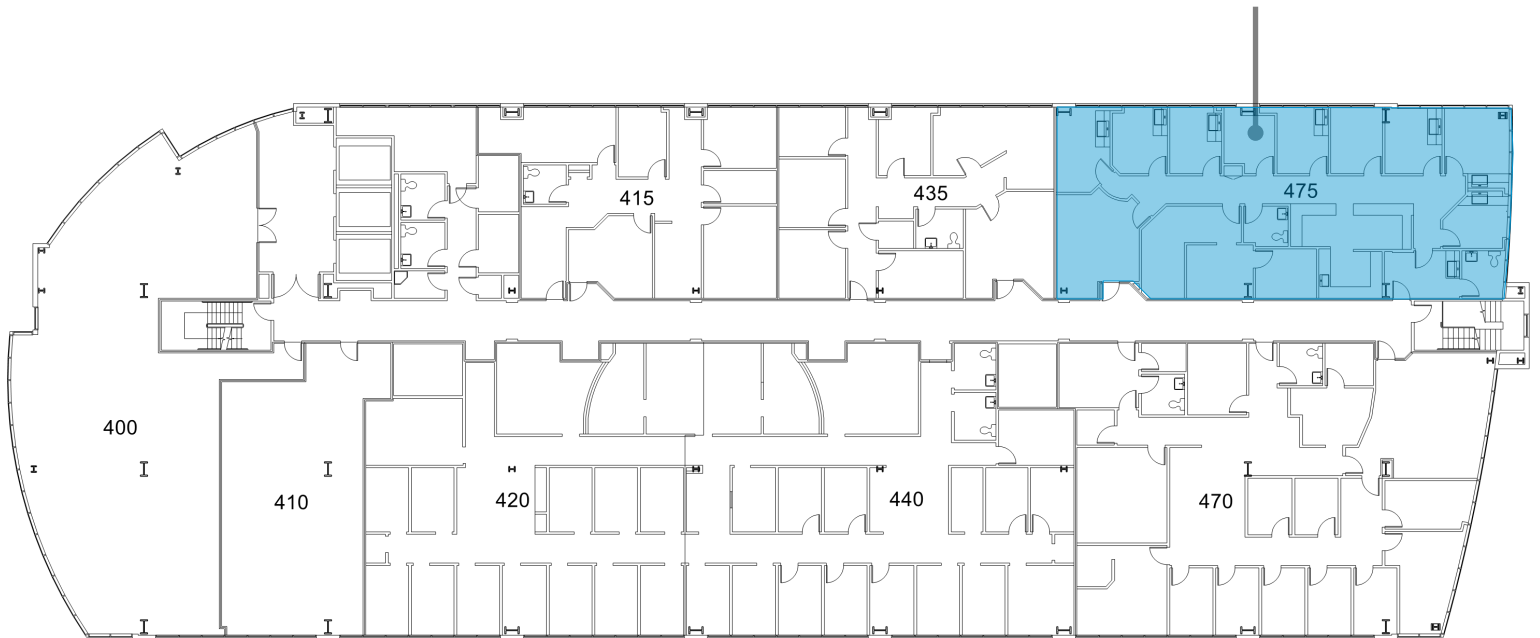
Burbank Medical Plaza II

# 191 South Buena Vista Street

## Suite 475

*(Available for sublease)*

2,897 RSF



**PMB Real Estate Services**  
*Real Estate Management Solutions for Healthcare*

Burbank Medical Plaza II