



Accelerating Success



For sale

Asking Price:

\$875K

Contact us:

Nathan Monan

+1 501 850 0710

nathan.monan@colliers.com

1 Allied Drive, Suite 1500,
Little Rock, AR 72202
P: +1 501 372 6161
colliers.com/arkansas

Interstate Commercial Property

For Sale: 7901 Stagecoach Road,
Little Rock, AR

Features

- Building 1: +/- 2,781 SF
- Building 2: 2,620 SF
- Greenhouse: 13,043 SF
- Lot size: 6.57 AC
- **Reduced sale price: \$875,000**
- Zoning: "PCD," Planned Commercial District
- Over 400 feet of frontage on I-430
- Traffic count: approximately 70,000 vehicles per day on I-430

Copyright © 2024 Colliers International.

Information herein has been obtained from sources deemed reliable, however its accuracy cannot be guaranteed. The user is required to conduct their own due diligence and verification.

For Lease



Contact us:

Nathan Monan

+1 501 850 0710

nathan.monan@colliers.com

Colliers | AR

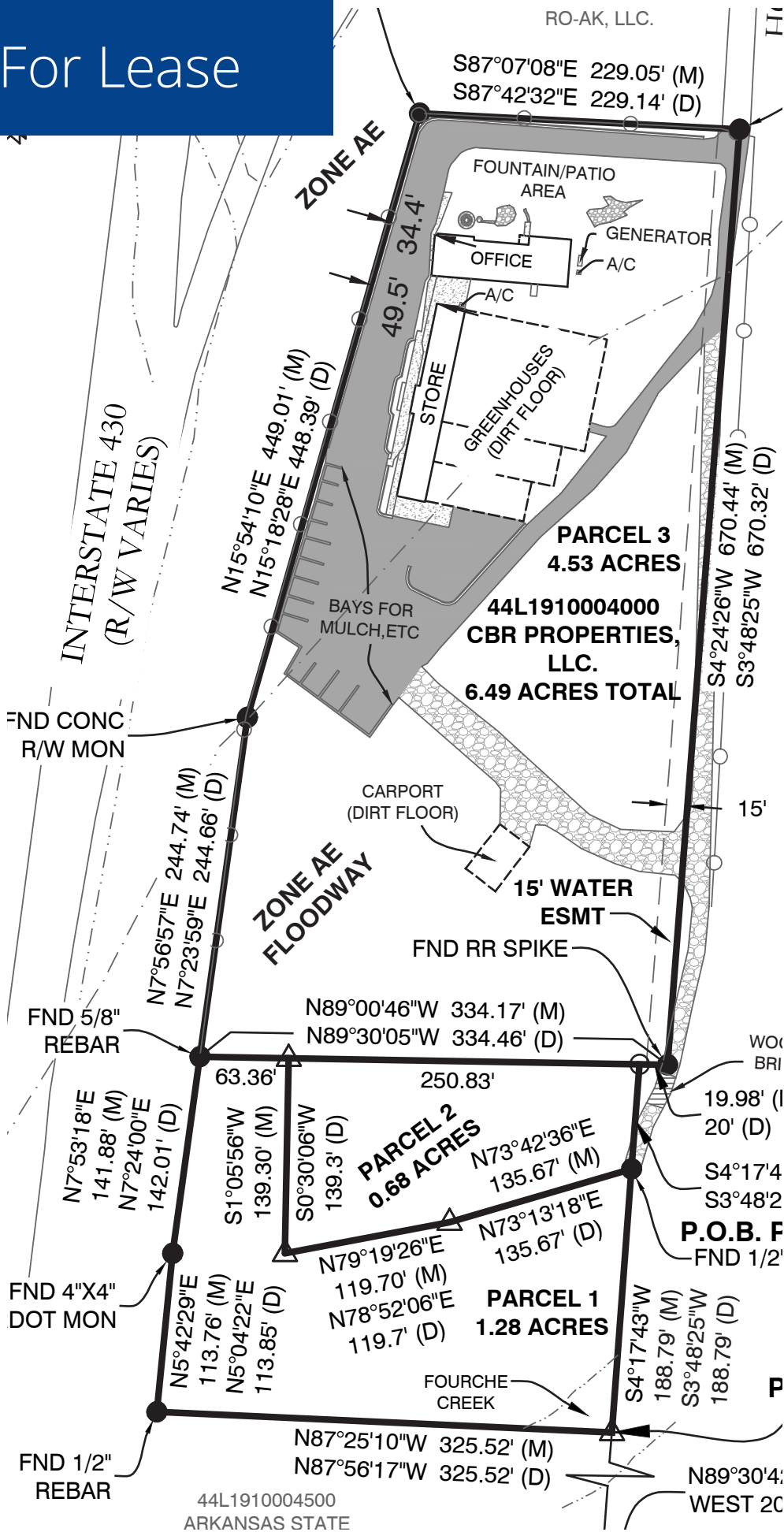
1 Allied Drive, Suite 1500

Little Rock, AR 72202

P: +1 501 372 6161

F: +1 501 372 0671

For Lease



Contact us:

Nathan Monan

+1 501 850 0710

nathan.monan@colliers.com

Colliers | AR

1 Allied Drive, Suite 1500

Little Rock, AR 72202

P: +1 501 372 6161

F: +1 501 372 0671