



PREMIER
COMMERCIAL
PROPERTIES



Retail/Office Space for Lease

4 Pine Drive S, Circle Pines, MN 55014

PROPERTY DETAILS

- Nicely located shopping center between I-35W & I-35E
- Signalized intersection
- MNDOT shows 12,700 vehicles per day
- 2 spaces available
 - Frontage next to credit union - 1,743sf - perfect space for financial planner, orthodontist, chiropractor or title company
 - End cap space - 2,400sf - perfect deli, local market or other food related business - all equipment is in place



PROPERTY DETAILS

LEASE RATE: \$14.00/SF, UTILITIES (HEAT & ELECTRIC) SEPARATELY METERED
CAM/TAX: \$6.50/SF (2019)

FOR MORE INFORMATION, CONTACT

Marty Fisher

763.862.2005

mfisher@premiercommercialproperties.com



PREMIER
COMMERCIAL
PROPERTIES

Retail/Office Space for Lease

4 Pine Drive S, Suite B | Circle Pines, MN 55014

FOR MORE INFORMATION, CONTACT

Marty Fisher | 763.862.2005 | mfisher@premiercommercialproperties.com



299 Coon Rapids Blvd NW | Coon Rapids, MN 55433 | premiercommercialproperties.com



PREMIER
COMMERCIAL
PROPERTIES

Retail/Office Space for Lease

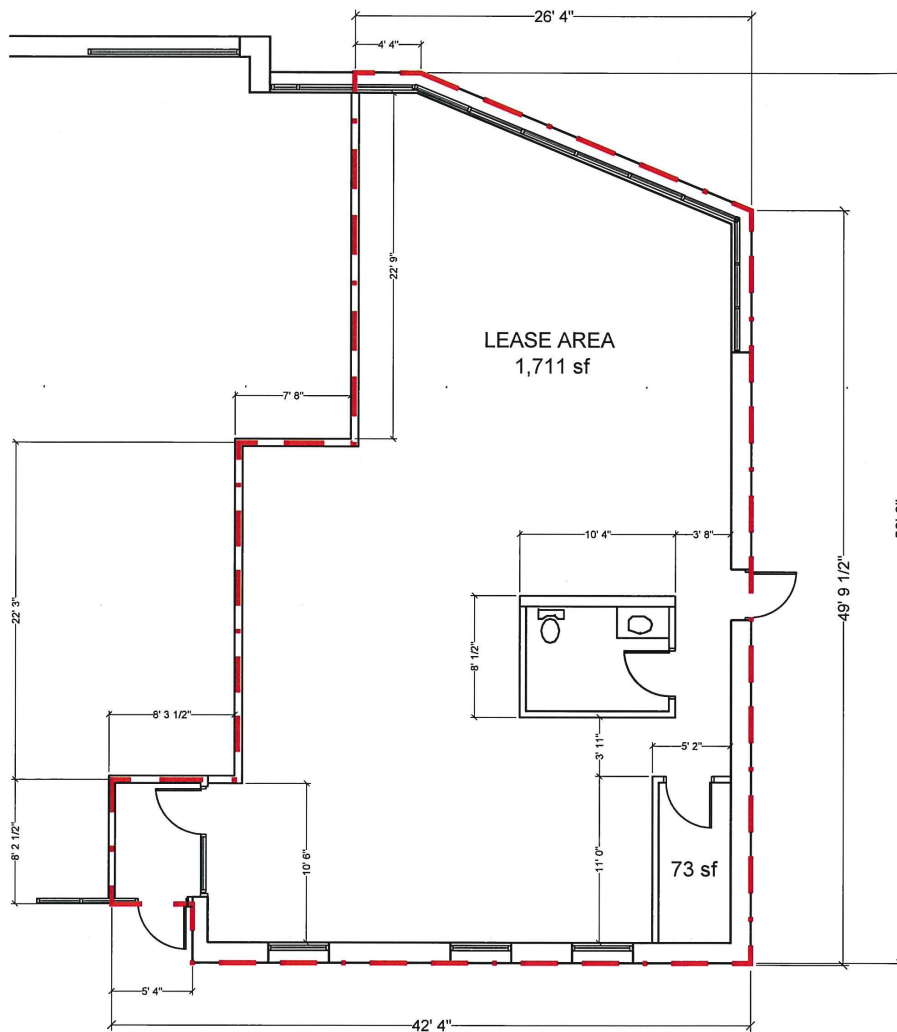
4 Pine Drive S, Suite B | Circle Pines, MN 55014

FOR MORE INFORMATION, CONTACT

Marty Fisher | 763.862.2005 | mfisher@premiercommercialproperties.com

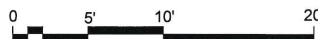
Suite B - Outlot - 1,743 square feet

Frontage space next to credit union



GLEN OAKS CENTER
4 SOUTH PINE DRIVE
CIRCLE PINES, MN 55014

Building Area	1,790 sf
Mechanical Area	73 sf
Total Lease Area	1,717 sf





PREMIER
COMMERCIAL
PROPERTIES

Retail/Office Space for Lease

4 Pine Drive S, Suite B | Circle Pines, MN 55014

FOR MORE INFORMATION, CONTACT

Marty Fisher | 763.862.2005 | mfisher@premiercommercialproperties.com



Shell space adjacent to Anoka Hennepin Credit Union totaling 1,743 square feet. High visibility to Lake Drive at a signalized intersection.

New monument signage coming.

Reserved parking by front door.

Perfect office space or retail space with 14,000 households within 3 miles.



PREMIER
COMMERCIAL
PROPERTIES

Retail/Office Space for Lease

4 Pine Drive S, Suite B | Circle Pines, MN 55014

FOR MORE INFORMATION, CONTACT

Marty Fisher | 763.862.2005 | mfisher@premiercommercialproperties.com

End Cap Space - 2,400sf (40' x 60')

Suite 2A - Main Building



End Cap with potential for outside patio





PREMIER
COMMERCIAL
PROPERTIES

Retail/Office Space for Lease

4 Pine Drive S, Suite B | Circle Pines, MN 55014

FOR MORE INFORMATION, CONTACT

Marty Fisher | 763.862.2005 | mfisher@premiercommercialproperties.com



All equipment included

- Coolers
- Hood
- Grill top
- Fryer
- 3 compartment sink



PREMIER
COMMERCIAL
PROPERTIES

Retail/Office Space for Lease

4 Pine Drive S, Suite B | Circle Pines, MN 55014

FOR MORE INFORMATION, CONTACT

Marty Fisher | 763.862.2005 | mfisher@premiercommercialproperties.com

DEMOGRAPHICS (2018)

1 mile

3 miles

5 miles

Total Population

7,630

38,948

101,048

Total Households

2,924

13,985

37,591

Average Household Income

\$91,211

\$101,762

\$108,372

