



RETAIL SPACE

MANHASSET, NY

564-600 PLANDOME ROAD

SIZE

1,300 SF plus basement

ASKING RENT

Upon Request

CO-TENANTS

Coldwell Banker Realty, De Lis Salon & Spa, Noble Nails, Sparkling Eyelash, Bang Bang Burritos, Nature's Remedy Pharmacy

NEIGHBORS

Starbucks, Walgreens, Dunkin Donuts, Manhasset Cinemas, Umbertos Pizza, Carvel, Wells Fargo Bank

COMMENTS

50+ parking spaces in adjacent rear lot & street parking

Average Household Income of \$286,000+ within a 1 mile radius

Close proximity to the Manhasset LIRR

Over 18,800 vehicles pass this site daily on Plandome Road

CONTACT EXCLUSIVE AGENTS

JASON SOBEL

jsobel@ripcony.com

516.933.8880

JULIANA CHIARELLI

jchiarelli@ripcony.com

516.933.8800

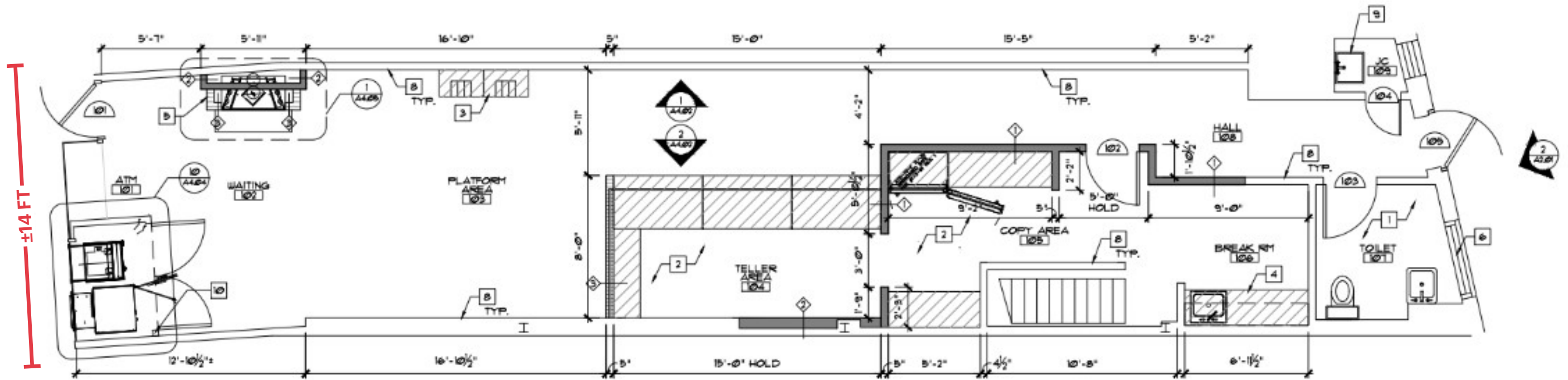
RIPCO
REAL ESTATE

1000 Woodbury Road
Suite 100
Woodbury, NY 11797
516.933.8880

Please visit us at ripcony.com for more information

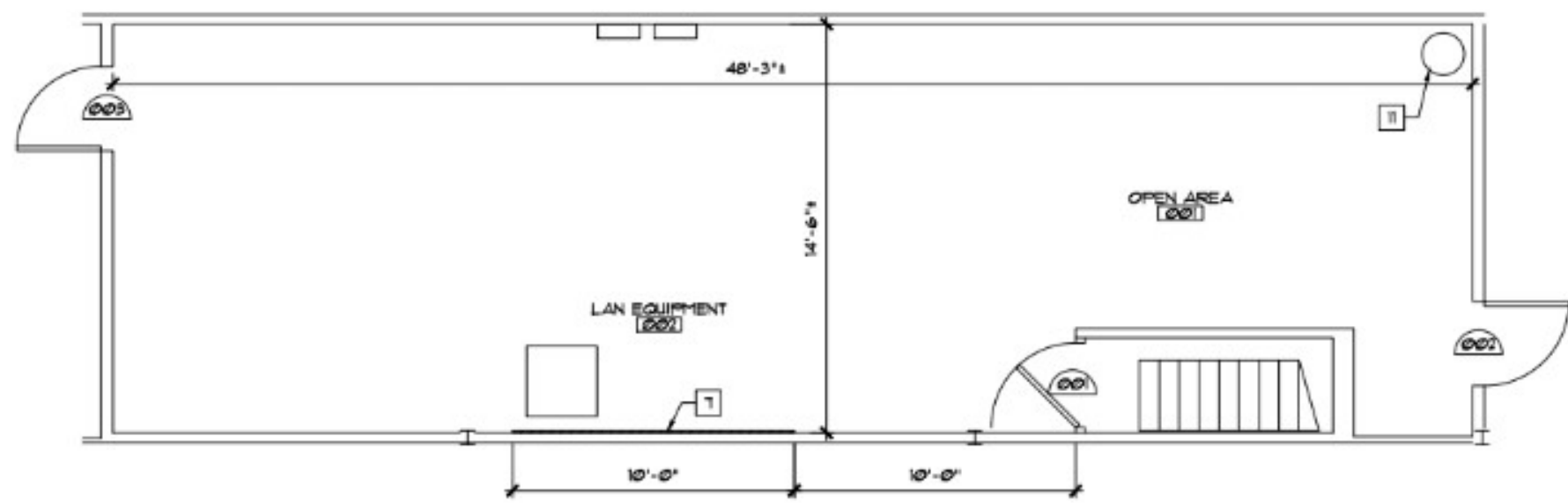
This information has been secured from sources we believe to be reliable, but we make no representations as to the accuracy of the information. References to square footage are approximate. Buyer must verify the information and bears all risk for any inaccuracies.

FLOOR PLAN



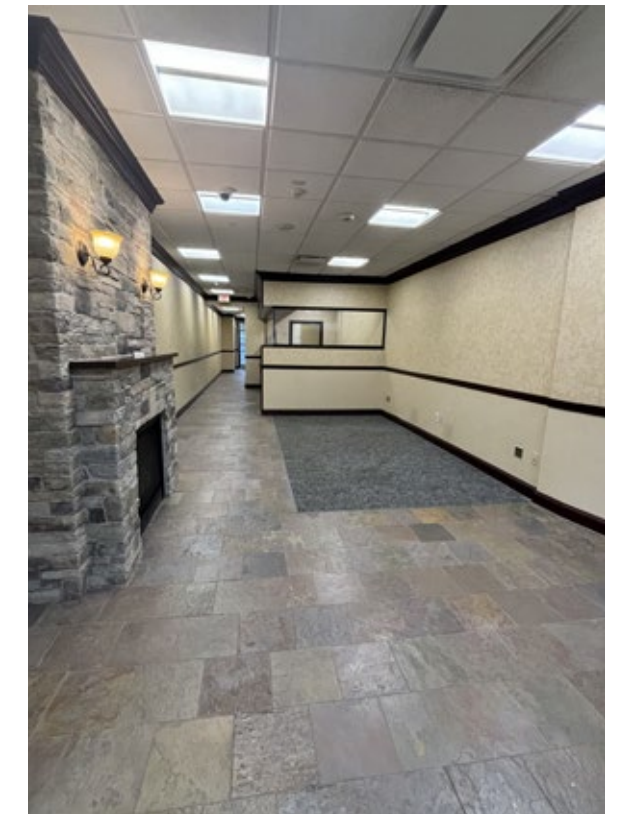


FIRST FLOOR CONSTRUCTION PLAN
 SCALE: 1/4" = 1' 0"

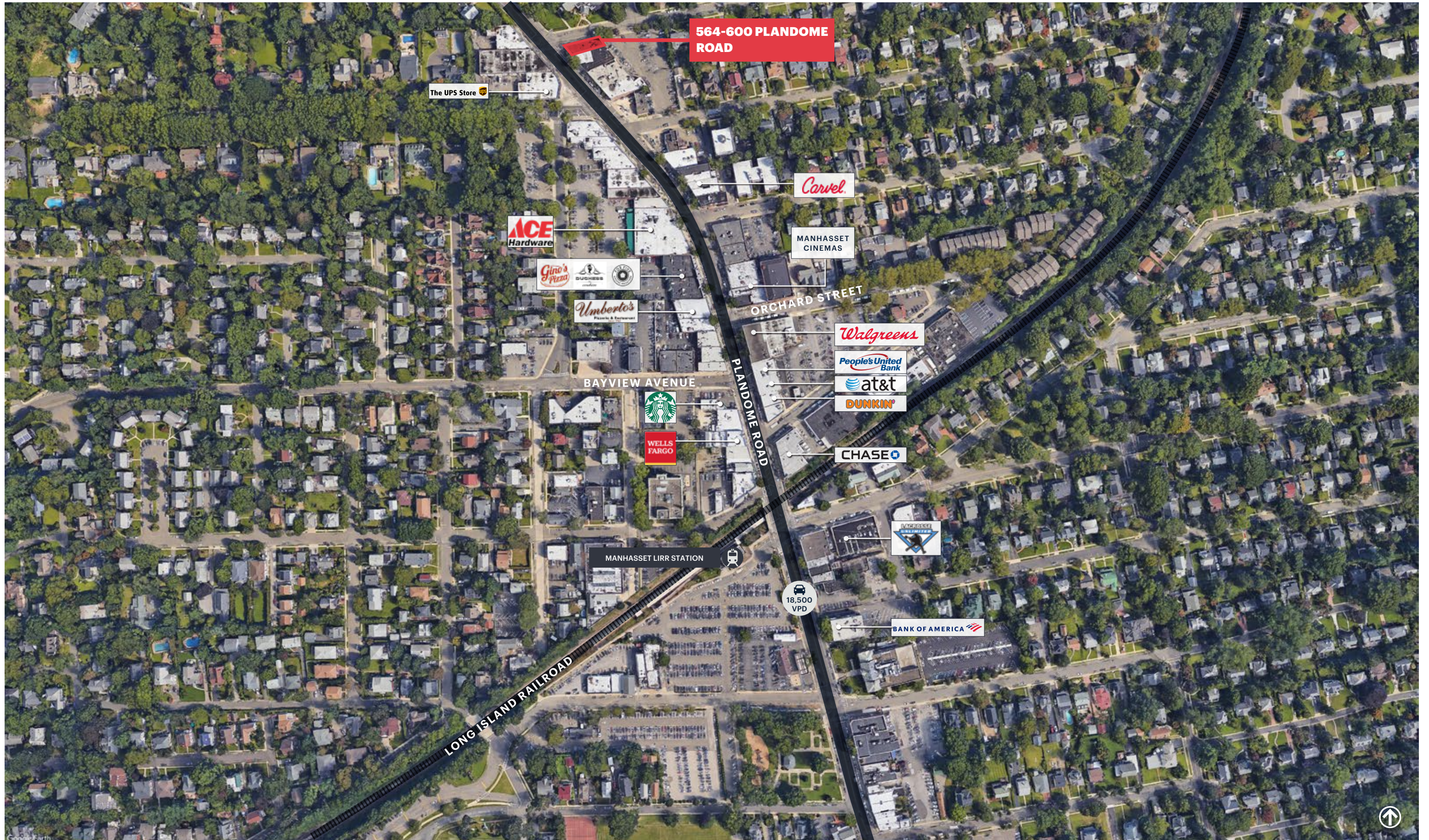




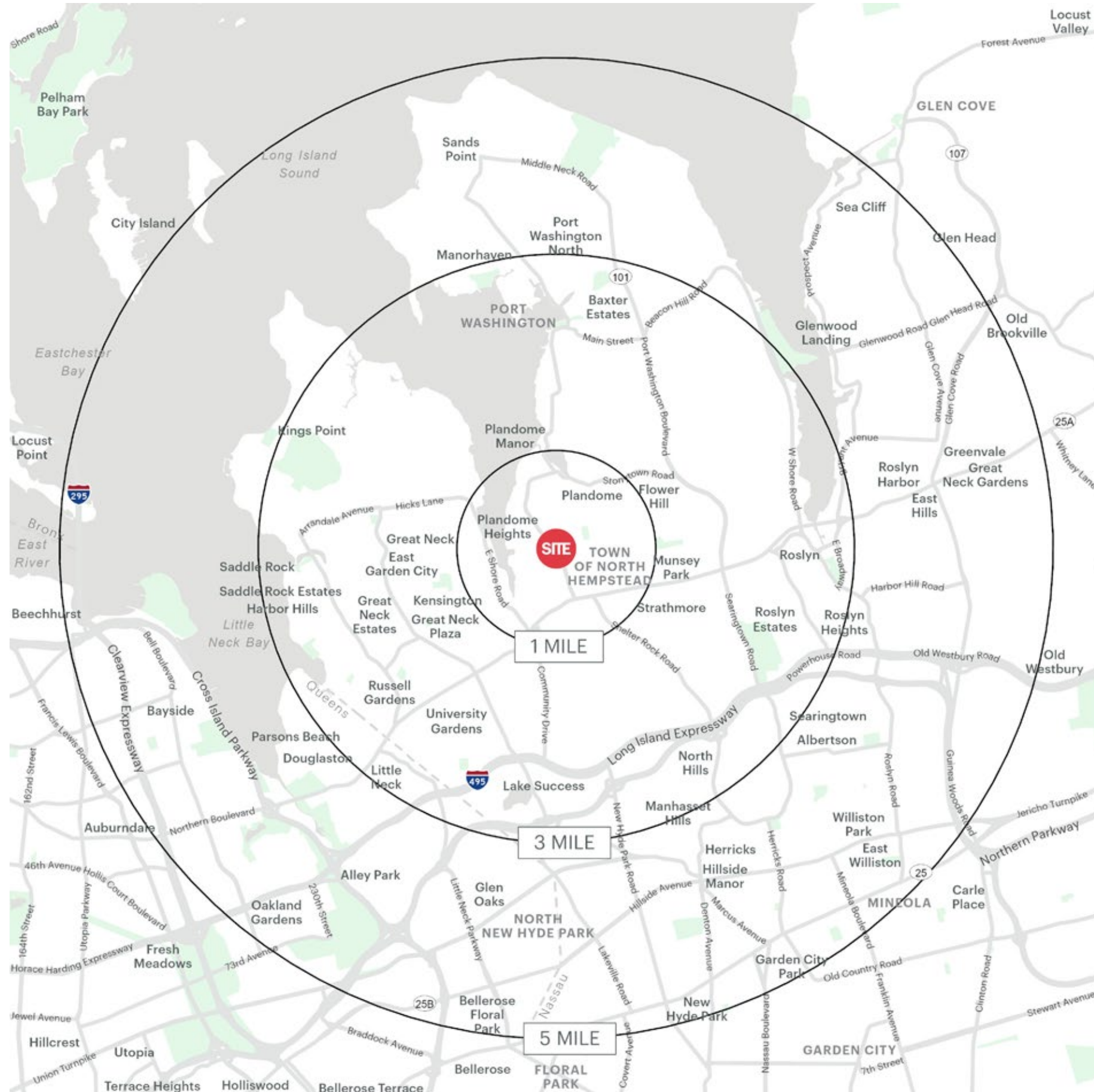
CELLAR CONSTRUCTION PLAN
 SCALE: 1/4" = 1' 0"



AERIAL



AREA DEMOGRAPHICS



564-600 PLANDOME ROAD MANHASSET, NY

1 MILE RADIUS

POPULATION

11,150

HOUSEHOLDS

3,725

AVERAGE HOUSEHOLD INCOME

\$269,494

MEDIAN HOUSEHOLD INCOME

\$198,722

COLLEGE GRADUATES (BACHELOR'S +)

5,799 - 53.4%

TOTAL BUSINESSES

786

TOTAL EMPLOYEES

7,058

DAYTIME POPULATION (W/ 16 YR +)

13,090

3 MILE RADIUS

POPULATION

103,242

HOUSEHOLDS

38,909

AVERAGE HOUSEHOLD INCOME

\$199,290

MEDIAN HOUSEHOLD INCOME

\$134,865

COLLEGE GRADUATES (BACHELOR'S +)

48,873 - 42.5%

TOTAL BUSINESSES

6,724

TOTAL EMPLOYEES

71,817

DAYTIME POPULATION (W/ 16 YR +)

127,110

5 MILE RADIUS

POPULATION

327,592

HOUSEHOLDS

119,691

AVERAGE HOUSEHOLD INCOME

\$164,839

MEDIAN HOUSEHOLD INCOME

\$116,230

COLLEGE GRADUATES (BACHELOR'S +)

136,722 - 38.1%

TOTAL BUSINESSES

14,673

TOTAL EMPLOYEES

182,866

DAYTIME POPULATION (W/ 16 YR +)

356,308

