



FOR LEASE

840 SANSOME STREET

JACKSON SQUARE | SAN FRANCISCO

1ST FLOOR + LOWER LEVEL

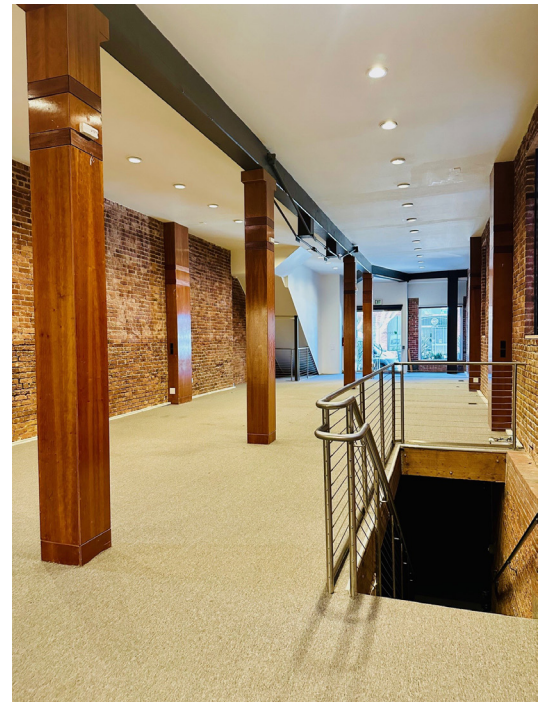
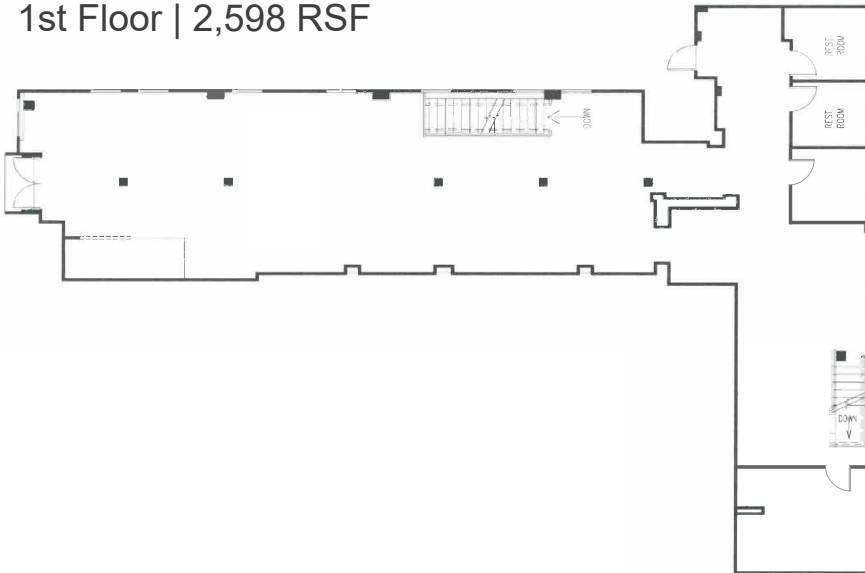
2,598 RSF + 2,111 RSF (BONUS SPACE)

CBRE

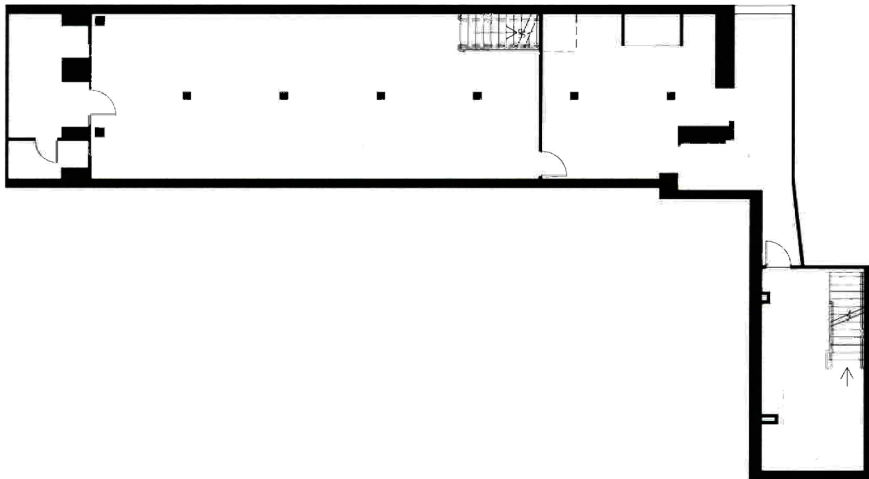
BOUTIQUE BRICK & TIMBER BUILDING

- Open Plan with High Ceilings
- Great Identity & Signage Opportunity
- Available Now

1st Floor | 2,598 RSF



Lower Level | 2,111 RSF





FOR LEASE

840 SANSOME STREET

JACKSON SQUARE | SAN FRANCISCO

CONTACT US

BROOKE AGRESTI

+1 415 772 0113

brooke.agresti@cbre.com

Lic. 01445753

MADISON DUTRA

+1 415 772 0380

madison.dutra@cbre.com

Lic. 02041936

CBRE