

HERITAGE PARK COMMONS

MW

FOR LEASE



PROPERTY DETAILS

523 WEST HERITAGE PARK BOULEVARD, LAYTON, UTAH 84041

LEASE RATE: \$14.00/SF NNN
NNN CHARGES: \$7.50/SF INCLUDING UTILITIES

- 3,580 SF currently available
- Excellent central Layton location
- Ample parking
- Numerous walkable amenities (Layton Hills Mall, restaurants, etc.)
- Tenant pays in-suite janitorial



MOUNTAIN WEST
COMMERCIAL REAL ESTATE

CHRIS FALK, CCIM, SIOR
cfalk@mwcre.com
direct 385.429.5500
[View Profile](#)

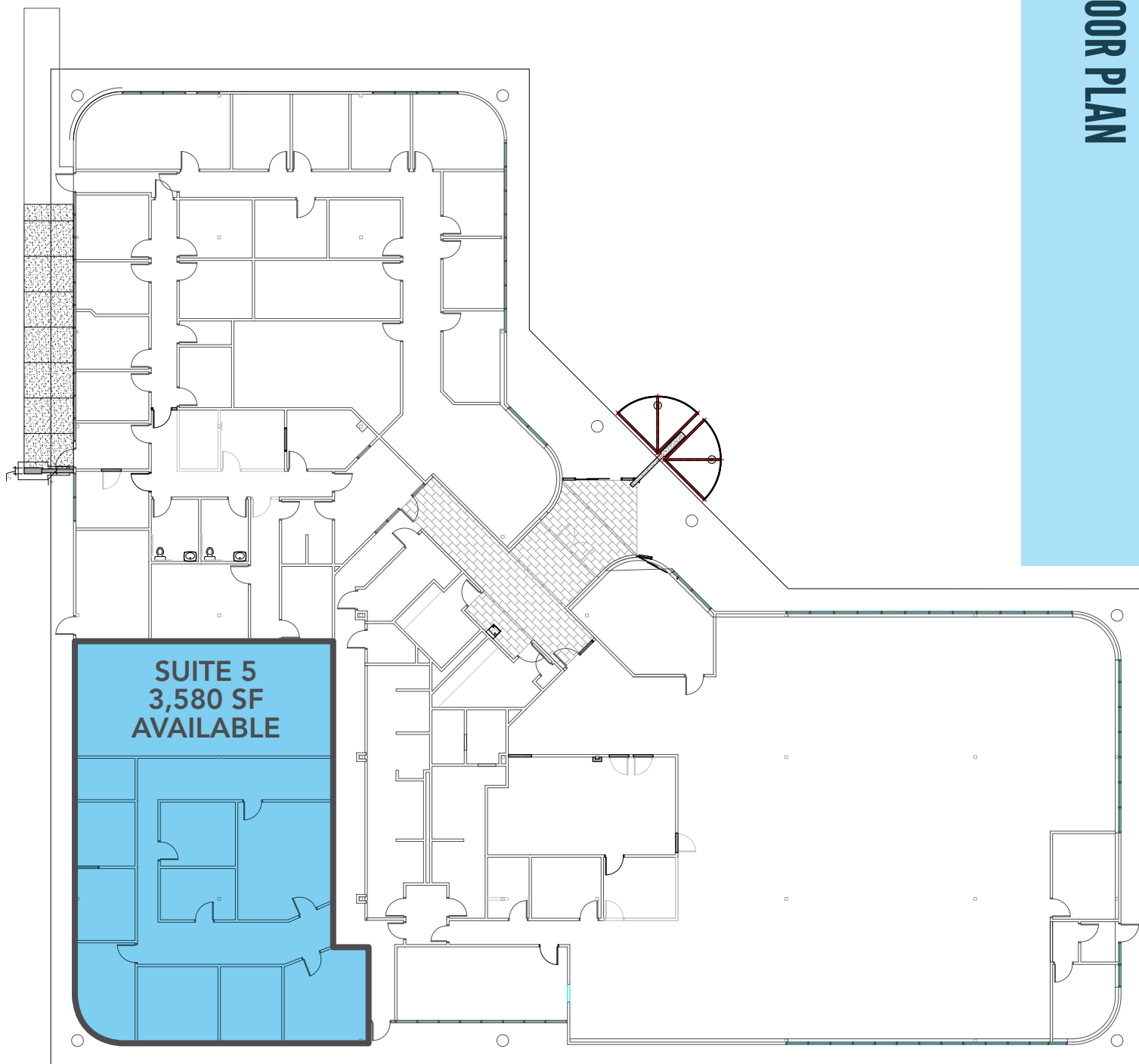
BRAXTON WILLIE, CCIM
bwillie@mwcre.com
direct 385.429.5501
[View Profile](#)

**FULL SERVICE
COMMERCIAL REAL ESTATE**
1755 East 1450 South
Clearfield, UT 84015
Office 801.578.5580
www.mwcre.com

HERITAGE PARK COMMONS



FLOOR PLAN

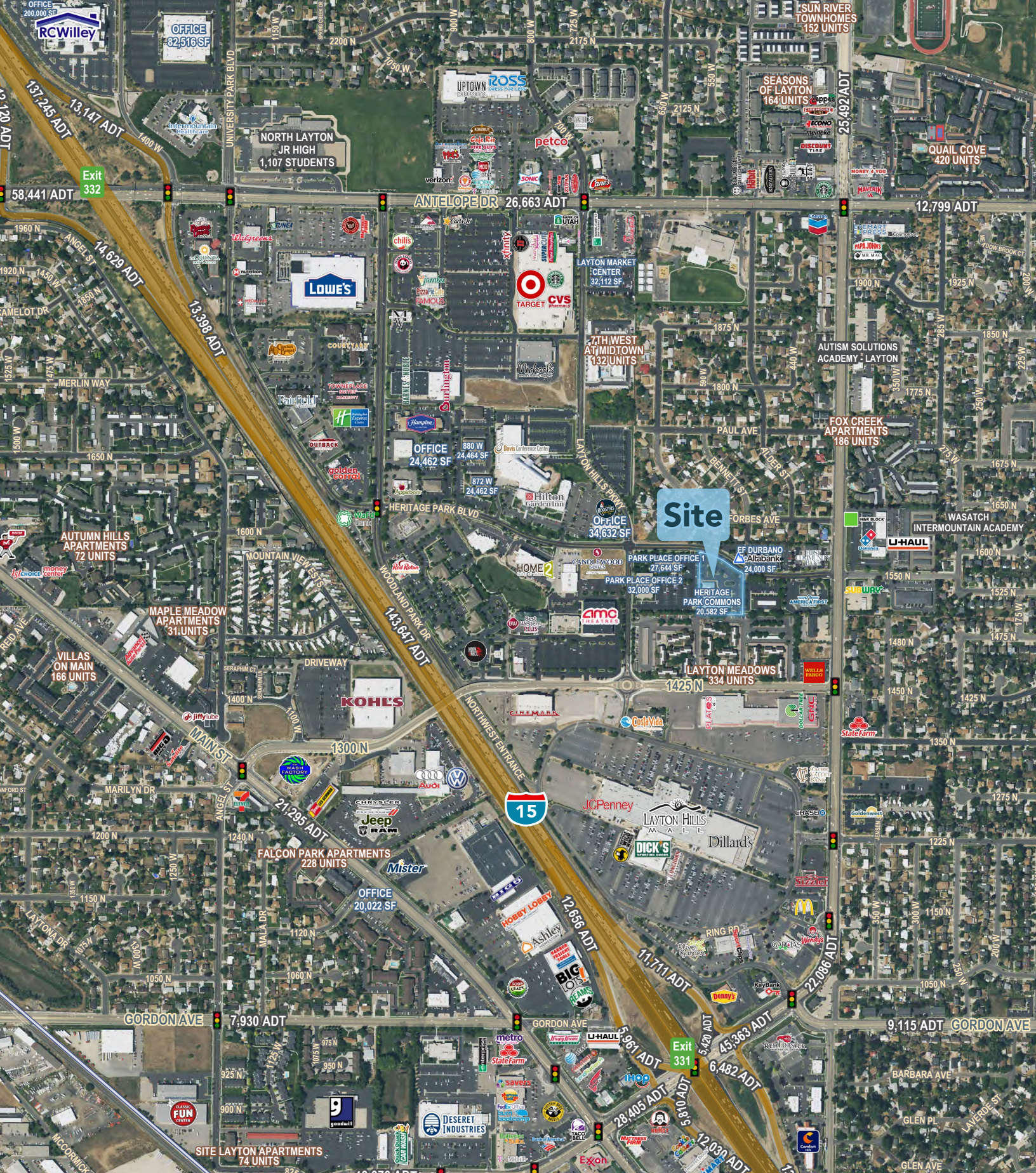


MOUNTAIN WEST
COMMERCIAL REAL ESTATE

CHRIS FALK, CCIM, SIOR
cfalk@mwcre.com
direct 385.429.5500
[View Profile](#)

BRAXTON WILLIE, CCIM
bwillie@mwcre.com
direct 385.429.5501
[View Profile](#)

**FULL SERVICE
COMMERCIAL REAL ESTATE**
1755 East 1450 South
Clearfield, UT 84015
Office 801.578.5580
www.mwcre.com



MOUNTAIN WEST
COMMERCIAL REAL ESTATE

CHRIS FALK, CCIM, SIOR
cfalk@mwcre.com
Direct 385.429.5500
[View Profile](#)

BRAXTON WILLIE, CCIM
bwillie@mwcre.com
Direct 385.429.5501
[View Profile](#)

**FULL SERVICE
COMMERCIAL REAL ESTATE**
1755 East 1450 South
Clearfield, UT 84015
Office 801.578.5580
www.mwcre.com