

OFFERING MEMORANDUM

— FOR LEASE —



FUNCTIONAL PROFESSIONAL OFFICE SPACE - MEDFORD, OR

(541) 608-6704 | www.Merit-Commercial.com | team@merit-commercial.com

Scott King
Principal Broker



Caspian Hoehne
Licensed Broker



Parcel boundaries are approximate and are for illustration purposes only.

CONTENTS

3 EXECUTIVE SUMMARY & HIGHLIGHTS

5 OFFERING DETAILS & PHOTOS

16 MARKET OVERVIEW

18 TRANSACTION GUIDELINES

EXCLUSIVELY REPRESENTED BY
MERIT COMMERCIAL REAL ESTATE
VIEW MORE AT: MERIT-COMMERCIAL.COM

SCOTT KING
Principal Broker / Owner
(541) 890-6708
scottking@gmail.com

CASPIAN HOEHNE
Licensed Broker
(541) 944-9967
caspi@merit-commercial.com

This offering memorandum is intended for only the party receiving it from Merit Commercial Real Estate ("MCRE"), and should not be made available to any other reviewing entity without the prior written consent of MCRE. All information included in this offering memorandum has been obtained from sources deemed reliable, however, Owner, MCRE, and/or their representatives make no representations or warranties, expressed or implied, as to the accuracy of the information, and makes no warranty or representation into the exact state of the property, the presence of contaminating substances, PCB's or asbestos, the property or owner's compliance with State and Federal regulations, or the physical condition of any improvements on the property. The recipient of this document must independently verify the information and assumes any and all risk for inaccuracies contained herein. The information contained in this offering memorandum is not a substitute for a thorough due diligence investigation.

Executive Summary

Merit Commercial Real Estate is pleased to exclusively present for lease a professional office space within the prominent Ticor Title building at **1501 East McAndrews Road** in beautiful Medford, Oregon (the "Space").

The Space is a Class A, professional office space on the second-floor of a high-profile office building located on one of the main thoroughfares in Medford. The entire building enjoys excellent visibility, with unimpeded line of sight to a combined $\pm 25,000$ vehicles per day ("VPD").

The Space itself features $\pm 1,374$ SF of shell office space and shares the second floor with an existing tenant (common area hallways and restrooms). The layout of the Space is flexible for various types of professional/service users, and currently includes a reception area, one private office, a large conference room (could be private office spaces), and a staff room with a kitchenette (existing and alternate floorplans are displayed in this report). The Space shares common area restrooms with the existing tenant on the second floor.

The building is conveniently located within a well established commercial corridor that includes various professional/service and medical office

buildings nearby. Providence Medical Center, is also in close proximity to the Space, one of two regional hospitals in the Rogue Valley.

Outside, there is a shared, paved parking lot with 52 spaces, 4 being ADA, that surrounds the building. The Space also includes shared monument signage fronting E McAndrews Road. Access is very convenient with one left/right driveway off of E McAndrews Road and one left/right driveway off of Corona Avenue.

Prospective users should note that the lease is under a full service structure with all utilities included, excluding in-suite janitorial fees. All utility costs, which include electricity, water, common area maintenance, and sewer, are paid by the Landlord, except in-suite janitorial fees which are to be paid by the Tenant (lease terms subject to change and individual negotiations).

The opportunity at 1501 E McAndrews Road is clear for a wide variety of prospective users - the Space has the winning combination of being a functional professional office space within a highly recognizable building in a rapidly growing region that checks all of a user's boxes. Contact brokers to arrange a tour today!

Offering Summary

Availability:	Immediately available
Occupancy:	To be delivered vacant
Address:	1501 E McAndrews Rd, Medford, OR 97504 - Jackson County
Base Rent:	\$2.00/SF/Mo (\$24.00/SF/Yr)
Lease Structure:	Full-Service; less in-suite janitorial fees
Lease Term:	Negotiable
TI:	Reasonable TI proposals considered
Zoning:	C-S/P (Service/Professional)
Year Built:	± 1998 (per County - 29 Years)
Space SF:	1,374 SF
FF&E:	Can be included or removed prior to occupancy
Parking:	(52) designated parking spaces (4) ADA parking spaces
Use Restrictions:	Landlord reserves right to approve desired use(s).

Lease Rate Breakdown

1501 E McAndrews Rd, Medford, OR 97504

Starting here: → usable space within the Subject unit (or "leased area")
1,374 rentable square feet

Base rent: asking base rent
↳ **\$2,748.00/month**, base rent

Effective rent: = **\$2,748.00/month total***

*approximate total full-service rent obligation, not including suite-specific janitorial fees

Monthly Rent = 1,374 RSF x \$2.00/SF = \$2,748 (Full Service)

\$2.00/SF/Mo

or \$24.00/SF/Year

What Does Full Service Rent Include?

Full Service rent is inclusive of the Space's *pro rata share of property-level expenses and utilities*, excluding in-suite janitorial services, which are the tenant's responsibility. The pro rata share includes:


- Property taxes and insurance
- Common area maintenance (parking, landscaping, walkways, etc.)
- Building utilities (electricity, water, sewer, trash, and HVAC)
- General building maintenance; including sinking funds for major systems, renovations, or remodels.
- Certain properties may have other costs incorporated in the full service lease structure. Ask brokers for additional information.


Note: The above cost estimates do NOT include any tenant improvement ("TI") allowances or estimates. All figures on this page are estimates and subject to change at any time without notice, and exact square footage, base rent, additional rent, or any other items will be determined within a formal lease agreement between a tenant and the property owner only.





Identification Key

 = Entire Site Boundary

 = Subject Space Floor Plan

Floor plan is deemed to be reliable but not guaranteed to be exactly accurate. Parcel boundaries are approximate and are for illustration purposes only. Aerial photo has been enhanced using AI and may not be exactly accurate.

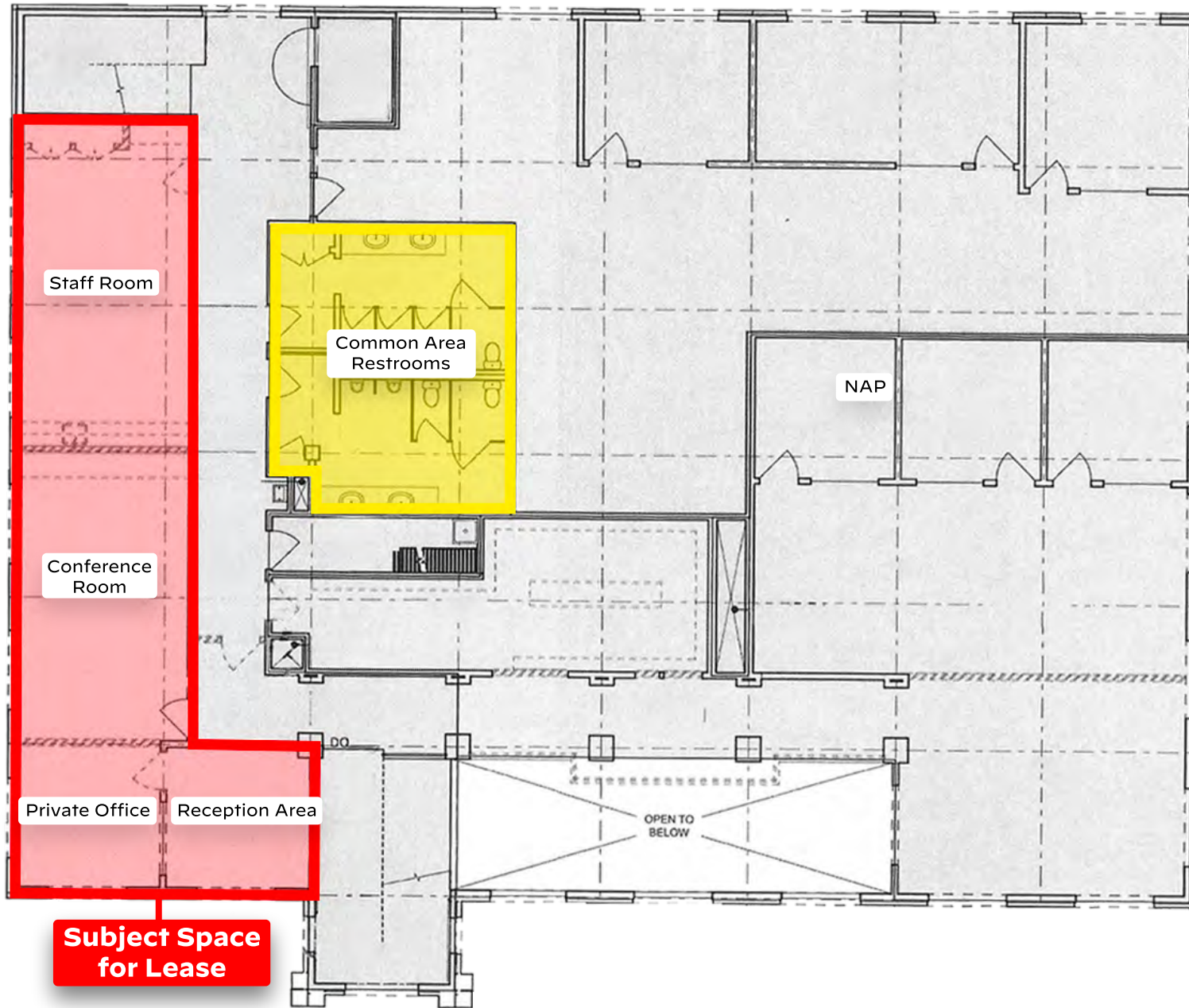
Tenant & Public Parking

Subject Space for Lease

Tenant & Public Parking

Tenant & Public Parking

Floor Plan Overlay



Identification Key

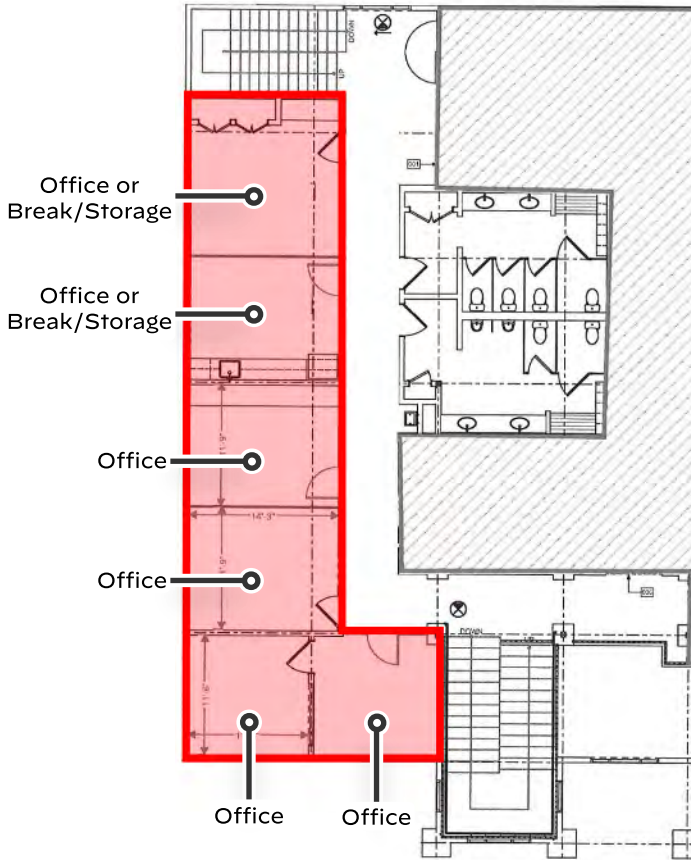
- = Subject Space
- = Common Area Restrooms

Floor plan is deemed to be reliable but not guaranteed to be exactly accurate.

**Subject Space
for Lease**

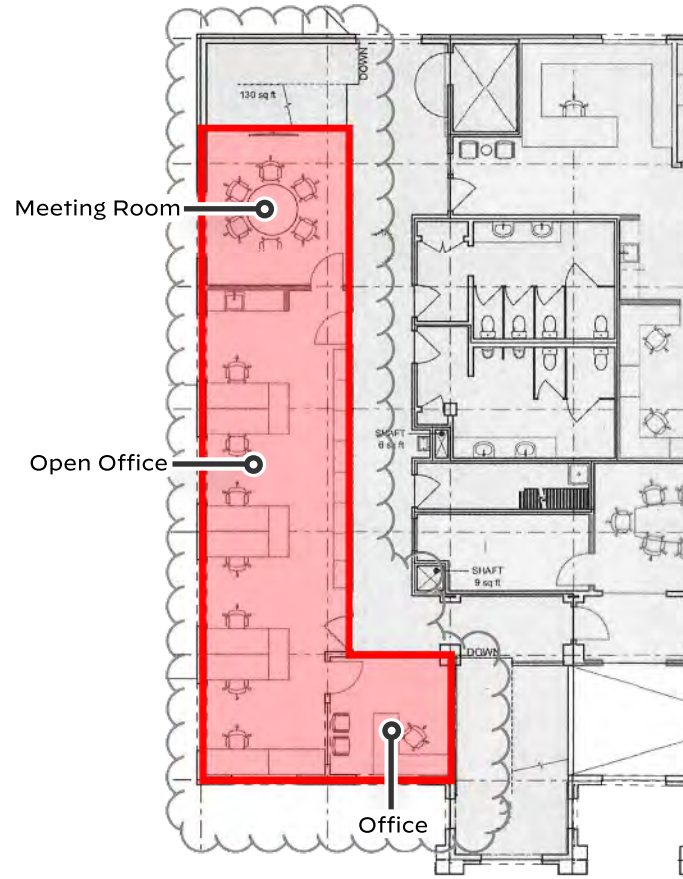
Current Subject Space Floor Plan

Alternate Floor Plan #1



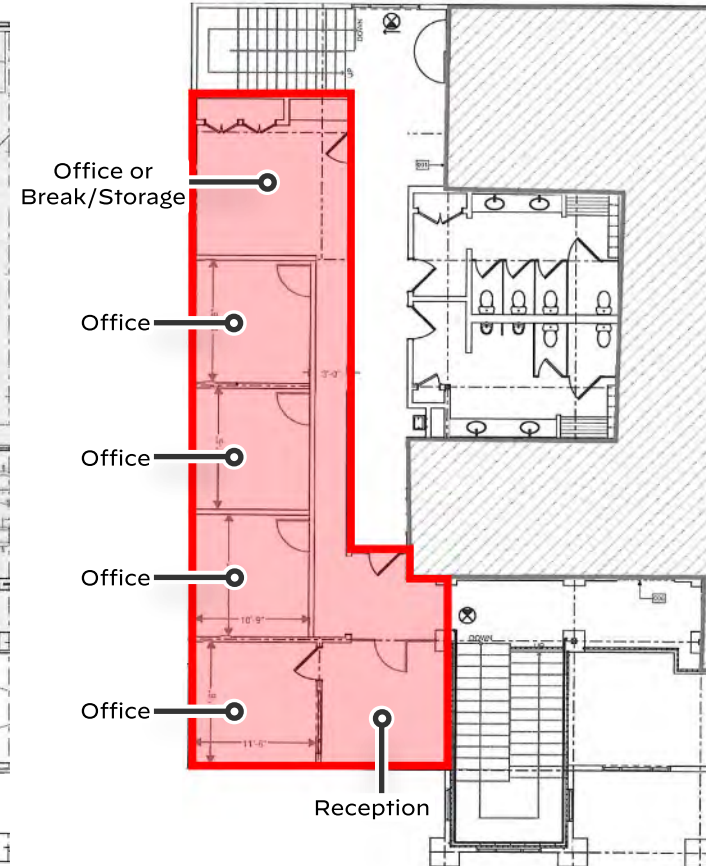
Alternate Floor Plan #1 includes 6 rooms and features four private offices and two rooms for additional offices or a break room / storage room.

Alternate Floor Plan #2



Alternate Floor Plan #2 includes three rooms with one private office, a large open workspace and a meeting room.

Alternate Floor Plan #3



Alternate Floor Plan #3 includes six rooms with a reception room, four private offices and a large break room / storage room.



Parcel boundaries are approximate and are for illustration purposes only. Aerial photo has been enhanced using AI and may not be exactly accurate.



Subject Space for Lease



Parcel boundaries are approximate and are for illustration purposes only. Aerial photo has been enhanced using AI and may not be exactly accurate.

Corporate Neighbors



Common Area Entrance



Common Area Stairwell

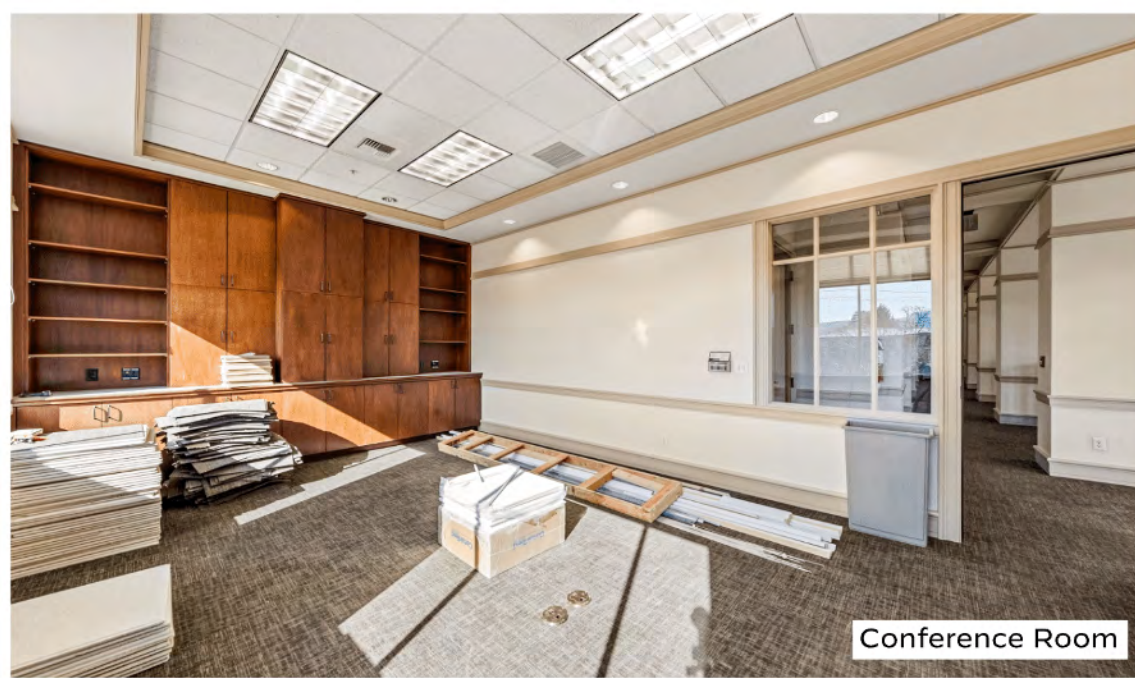


Reception Area



Private Office

Subject Photos - Interior



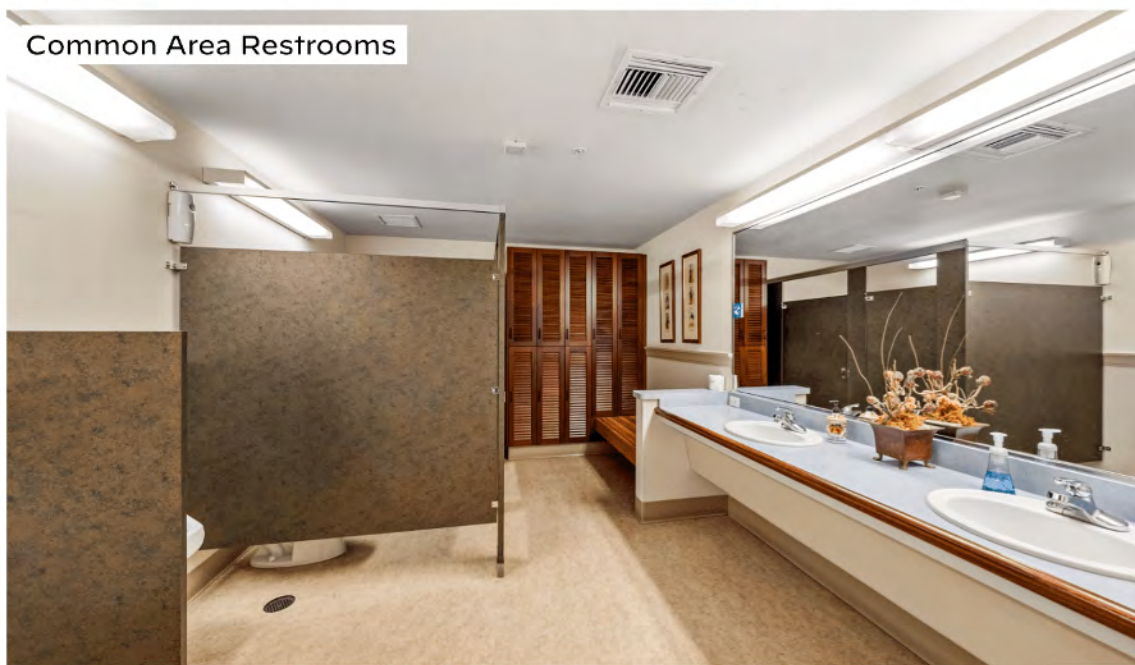
Conference Room



Staff Room



Staff Room / Kitchenette



Common Area Restrooms

Subject Photos - Interior



The Rogue Valley



Downtown Medford



Asante Hospital Expansion



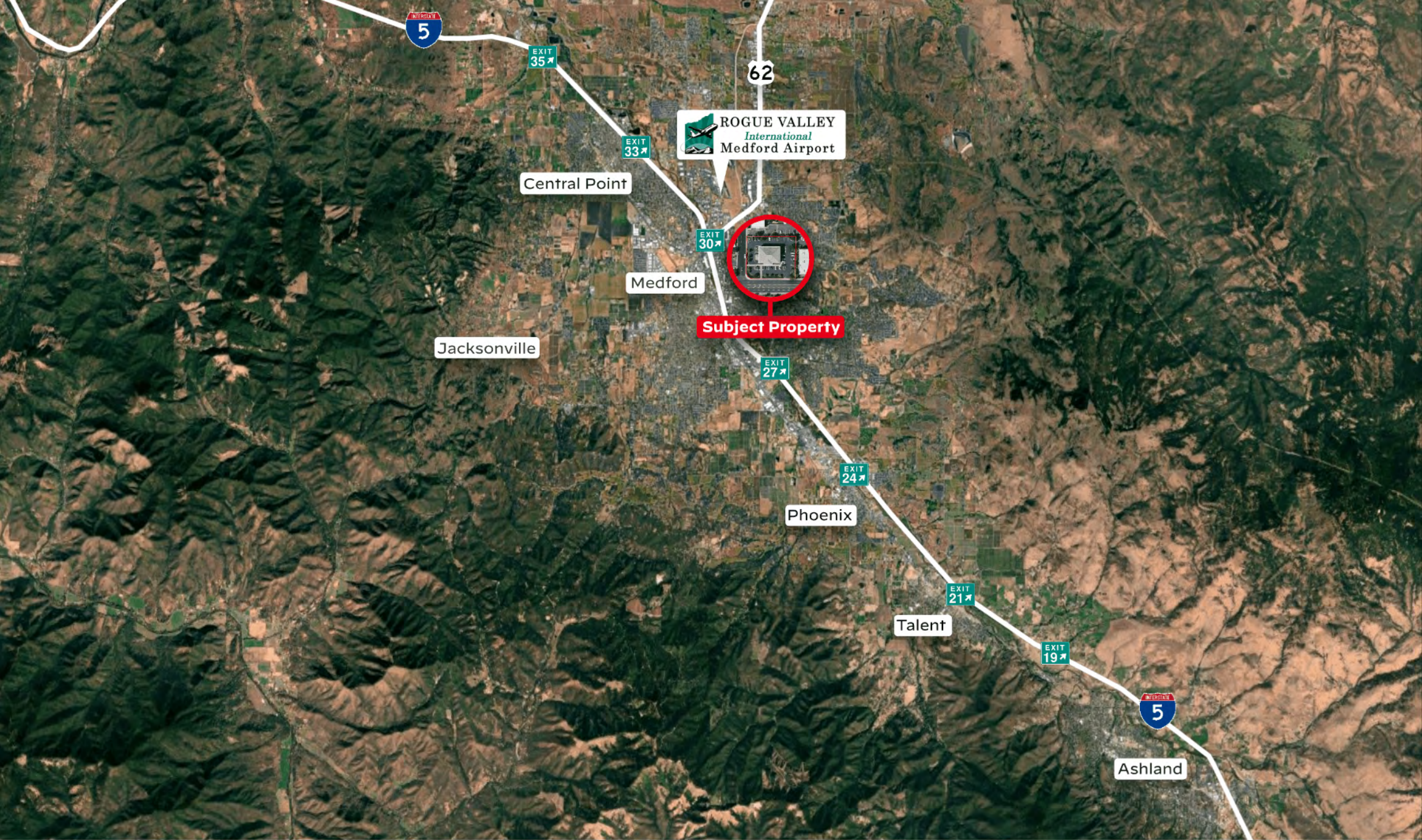
Medford, OR | History and Profile

Medford, Oregon - Medford is a vibrant city located in Southern Oregon, known for its unique blend of natural beauty, cultural richness, and economic vitality. It serves as the county seat of Jackson County and is the fourth largest metropolitan area in Oregon. The city is renowned for its picturesque landscapes, including the nearby Rogue River and the Siskiyou and Cascade mountain ranges, which offer a plethora of outdoor activities such as fishing, hiking, and rafting.

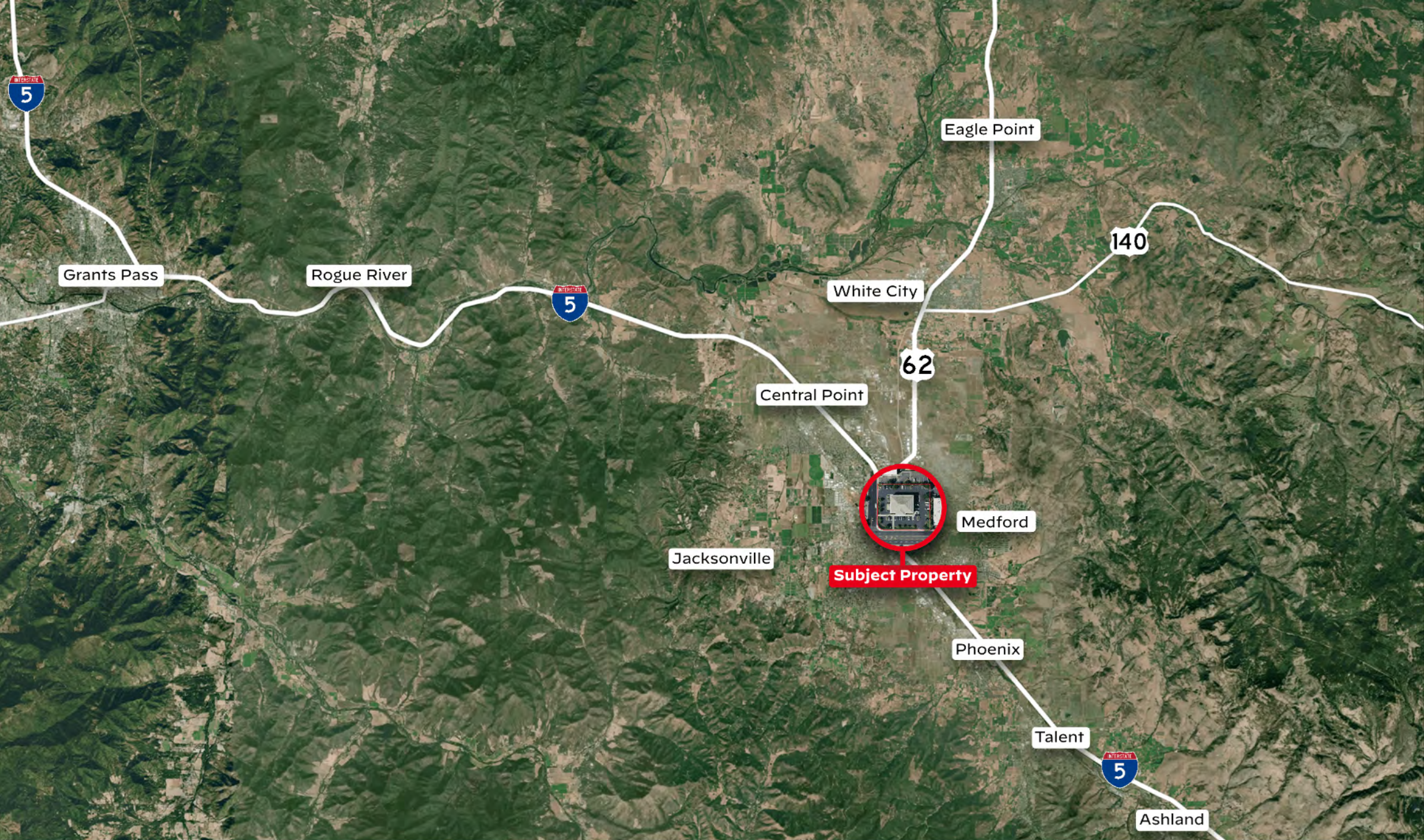
Economically, Medford has a diverse base, with healthcare, retail, and manufacturing being significant contributors. The city is home to the Rogue Valley Medical Center and Providence Medford Medical Center, which are major employers in the region. The retail sector has performed increasingly well, anchored by the Rogue Valley Mall, the expanding Northgate Center, and the award-winning Medford Center.

The City has a strong sense of community as well as a diverse economy. Within a 15 minute drive, the Rogue Valley International-Medford Airport is the regional air travel hub for all of Southern Oregon, with well over 1M annual travelers. Breathtaking outdoor recreational activities are moments away; Upper and Lower Table Rock, the Rogue River, dozens of lakes, as well as the Crater Lake National Park are all within an easy drive.

Overall, Medford is a city that blends its historical roots with a forward-looking perspective, making it a desirable destination for businesses and residents alike.



Region Map - Rogue Valley



Region Map - Rogue Valley

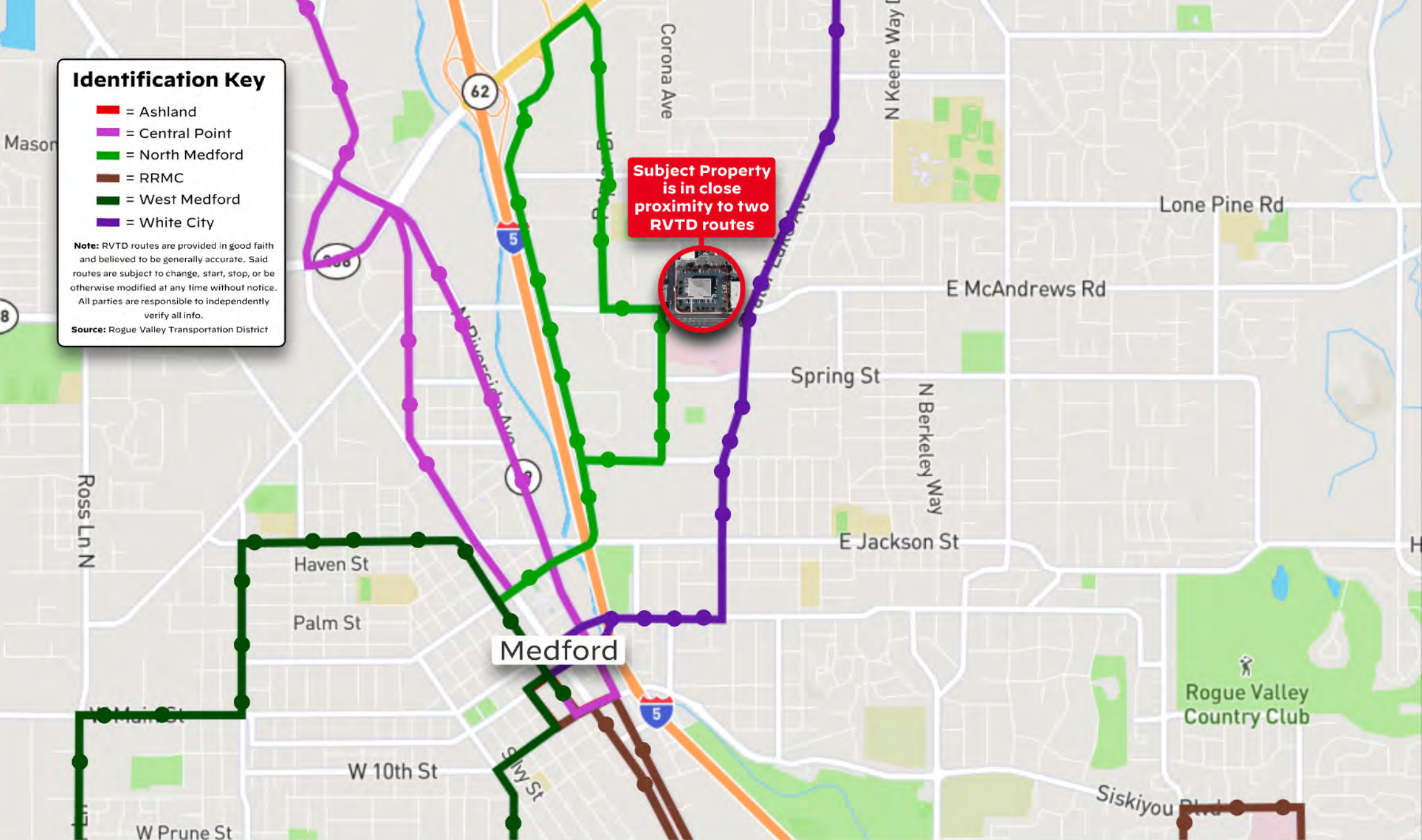
Identification Key

- = Ashland
- = Central Point
- = North Medford
- = RRMC
- = West Medford
- = White City

Note: RVT routes are provided in good faith and believed to be generally accurate. Said routes are subject to change, start, stop, or be otherwise modified at any time without notice. All parties are responsible to independently verify all info.

Source: Rogue Valley Transportation District

Subject Property is in close proximity to two RVT routes



Why Southern Oregon?

Southern Oregon, largely encompassing Jackson and Josephine Counties, is a world-class gem hiding in plain sight. Anchored by its mild Mediterranean climate, the area boasts the winning combination of being both strategically located between Portland and San Francisco, and having forward-thinking municipal leadership. This combination drives strong economic growth and has created a long runway for development across all asset classes.

Southern Oregon is a gateway to the entirety of the West Coast, via Interstate 5, North through Eugene, Salem, Portland, and Washington State, and South, through Redding, San Francisco, and down to Los Angeles. The local transportation system connects the most populated cities in the region of Medford, Ashland, and Grants Pass, and has dedicated highways Northeast to Bend and West to the Oregon Coast.

Multiple billion-dollar companies call Southern Oregon home, such as Lithia Motors (NYSE: LAD), Asante Health Systems, Harry & David (NYSE: FLWS), Pacific Retirement Services, and countless small and mid-sized businesses.

Historically, the area's economy was mainly driven by the timber and agricultural industries. In the past few decades, the area has become a healthcare hub, and has a diverse economy supported by the industrial, manufacturing, logistics, retail, senior/retirement living, and finance/professional sectors. Timber and agriculture still play a role, with Timber Products and Roseburg Forest Products' main facilities located nearby.

A burgeoning golf destination, the area has numerous renowned golf courses, and several other famous courses are within a short drive (Bandon Dunes, Pacific Dunes, Pronghorn Resort). Over 8 casinos are within a 6-hour drive, including Seven Feathers, Three Rivers, Elk Valley, and others.





Southern Oregon Market

Strategic, Central Location

Southern Oregon is perfectly positioned nearly exactly halfway between Portland and Sacramento. The region's main airport, Rogue Valley International-Medford Airport (MFR) serves as both a high-traffic regional airport with dozens of direct-access and layover routes as well as a bustling private aviation hub. Well over 1m annual travelers come through MFR, with that number growing alongside the addition of several new commuter and travel routes to Portland and Salem, Arizona, California, and many others.

Medford enjoys short, \pm 1 hour flight times to San Francisco (6 hr drive), Portland (4 hr drive), and Seattle (7 hr drive). The local airport recently announced plans in early 2025 to double its size and capacity over the next few years, in order to accommodate the rapid growth of the region.

From a private aviation perspective, MFR is home to 2 Fixed-Base Operators (FBOs) - Million Air and Jet Center MFR. Both are highly-active, highly-rated FBOs serving countless private aircraft owners and military personnel. Million Air prides itself on being the only FBO on the West Coast that can hangar a Boeing business jet.

The airport's low relative parking fees, combined with its strategic, central location, has proven the region as one of the most prominent private aviation destinations in Oregon for corporations and private individuals alike.

The region's drier, sunnier climate allows for easier air travel for most of the year, compared to the rest of the State. MFR also serves as the region's air-based fire-fighting hub during the summer months.

Overall, the region is a burgeoning aviation destination, with the perfect blend of economical, weather, and geographical tailwinds spurring growth.



Transaction Guidelines

1501 E McAndrews Road (the "Subject Property") is being offered for lease only on the open market. Prospective users should rely on their own assumptions and base their offer/LOI on the "As-Is, Where-Is" condition of the Subject Property. Merit Commercial Real Estate ("MCRE") will be available to assist prospective purchasers with their review of the offering and answer any questions within their scope of practice.

Property Tours: Tours are available by appointment only, and must be completed with the company of a listing broker or other representative. Seller reserves the right to suspend tours at any time without notice. Seller requires at least 24 hour advance notice for any tours.

LOIs: There is not currently a definitive date for LOIs to be submitted. When a prospective user prepares an offer for the Subject Property, such LOIs should, at a minimum, include the following:

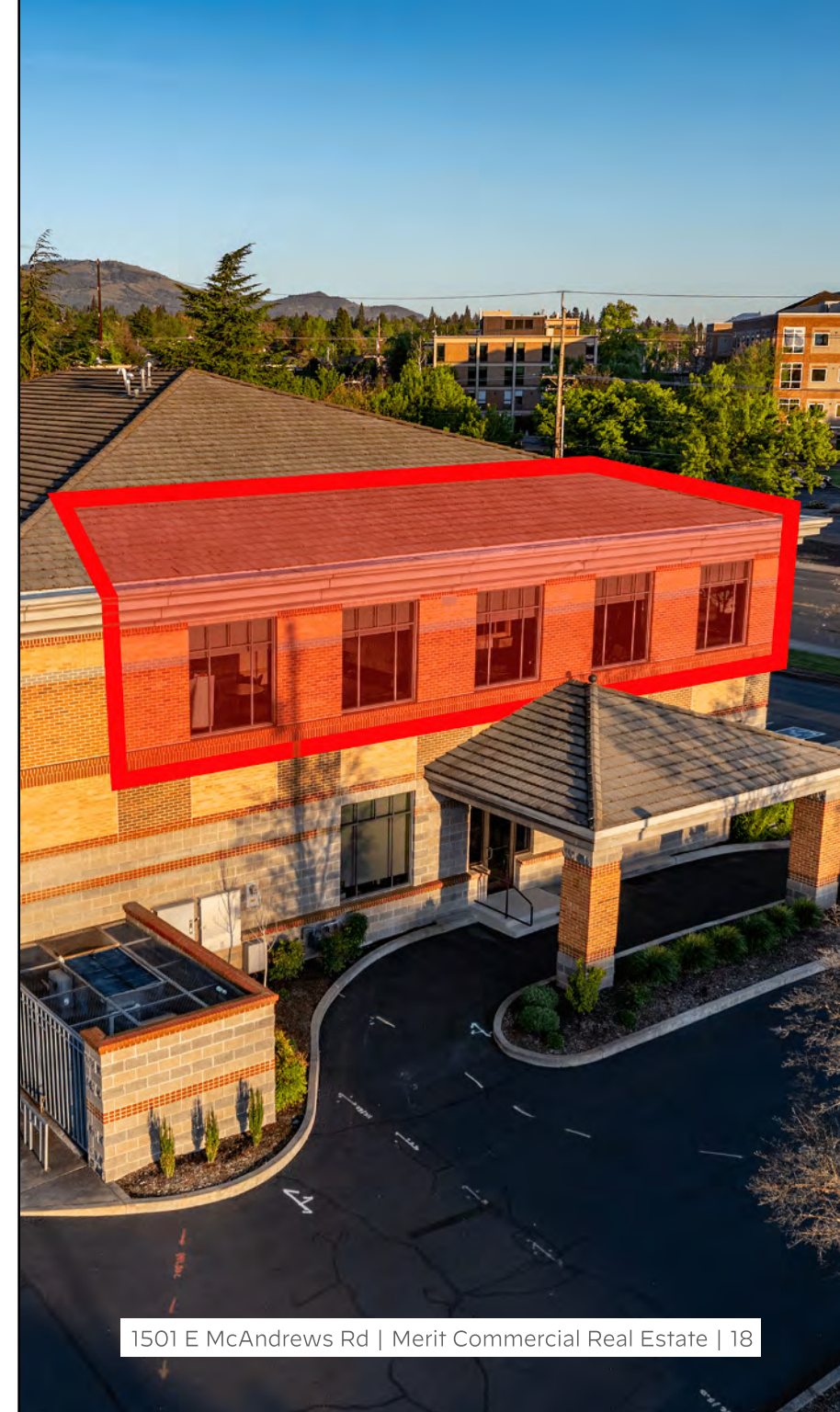
- Lease rate; asking is \$2.00/SF/Month (\$24.00/SF/Year), Full Service (excluding in-suite janitorial fees)
- TI package, if any (only reasonable packages considered)
- Desired occupancy date
- Initial lease term and extension options, if any
- Tenant's desired use

Please contact listing brokers Scott and Caspian for additional information.

Scott King
Principal Broker / Owner

Caspian Hoehne
Licensed Broker

(541) 608-6704 / team@merit-commercial.com
www.merit-commercial.com





Notice of Disclosures

This Offering Memorandum (the "Document") is intended for only the party receiving it from Merit Commercial RE, LLC ("MCRE"), and should not be made available to any other reviewing entity without the prior written consent of MCRE. All information included in this Document has been obtained from sources deemed reliable, however, Owner, MCRE, and/or their representatives make no representations or warranties, expressed or implied, as to the accuracy of the information, and makes no warranty or representation into the exact state of the property, the presence of contaminating substances, PCB's or asbestos, the property or owner's compliance with State and Federal regulations, or the physical condition of any improvements on the property. The recipient of this Document must independently verify the information and assumes any and all risk for inaccuracies contained herein. The information contained in this Document is not a substitute for a thorough due diligence investigation.

This Document and all related materials, including but not limited to text, graphics, financial data, projections, designs, and intellectual property contained herein, are the proprietary and confidential property of MCRE. The Document is provided solely for the use of the intended recipient(s) for the purpose of evaluating the specific investment or transaction opportunity described herein. Some photos or graphics in this Document may have been enhanced using AI and may not be exactly accurate, nor should they be relied upon for any investigation, studies, or any other use besides general informational purposes.

Any unauthorized use, reproduction, duplication, distribution, or adaptation of the Document or any portion thereof, in any form or by any means, whether electronic, mechanical, or otherwise, is strictly prohibited without the express written consent of MCRE. This includes, but is not limited to, copying, modifying, creating derivative works, or using the Document as a template or basis for other materials. Such actions may constitute a violation of applicable intellectual property laws, including copyright and trade secret laws.

MCRE reserves all rights to pursue any and all legal remedies available to the fullest extent permitted by law against any individual or entity engaging in unauthorized use, reproduction, or distribution of this Document. By accepting receipt of this Document, you acknowledge and agree to abide by these restrictions and to maintain the confidentiality and integrity of the information provided.

Merit Commercial RE, LLC
Oregon license 201001084
310 E. 6th Street, Ste. 400
Medford, OR 97501

Scott King
Licensed Principal Broker in the
State of Oregon (#200602153)

Caspian Hoehne
Licensed Real Estate Broker in the
State of Oregon (#201234073)

Additional Buyer/Tenant Resources





The Merit Pages - Vendor Directory

Notes & Background

This vendor directory is tailored to commercial property owners or asset managers (the "Contracting Party") and covers the most common recommendations we give. We do not provide blanket recommendations for attorneys or finance/tax professionals, but may provide them based on your specific scenario - please contact us. Vendors marked with a star symbol indicate that Merit Commercial Real Estate ("MCRE") may receive compensation from this vendor. MCRE assumes absolutely no liability or responsibility for the actions of any vendor on this list. It is the responsibility of the Contracting Party to independently vet, verify, pay, manage, or otherwise work with any vendor. MCRE recommends all Contracting Parties obtain multiple bids/proposals for all work contemplated.

1031 Accomodator

- ★ **IPX Exchange**, ipx1031.com..... (503) 223 3911
- the1031investor**, the1031investor.com..... (850) 889 1031
- First American Exchange**, firstexchange.com..... (503) 748 1031

Architect

- arkitek**, arkitek.us..... (541) 591 9988
- CDArchitects**, cdarchitectsllp.com..... (541) 779 4363
- KSW Architects**, kswarchitects.com..... (541) 488 8200
- ★ **Oregon Architecture**, oregonarchitecture.biz..... (541) 772 4372
- ORW Architecture**, orwarchitecture.com..... (541) 779 5237

Cleaning

General / Power Washing / Graffiti

- Dustin Curbs** (Lot Cleaning) dustincurbs.com..... (541) 613 4189
- Roof Remedy**, roofremedy.com..... (541) 500 0890
- ★ **Rogue Pro Softwash**, rogueprosoftwash.com..... (541) 326 8294
- Renew Power Washing**, renewpwash.com..... (541) 601 7646

Junk Removal

- ★ **AHC Maintenance** (junk removal & cleaning)..... (541) 690 6312
- Rogue Disposal**, roguedisposal.com..... (541) 779 4161

Interior Cleaning / Unit Turns

- Clean Freaks**, cleanfreaks.net..... (541) 787 5218
- GraceWorks Cleaning**, graceworkscleaning.com..... (541) 292 3895
- ★ **J&J Cleaning**, jandjhousecleaning.com..... (541) 621 3297

Commercial Construction / Ground-Up

- Adroit Construction**, adroitbuilt.com..... (541) 482 4098
- Buntin Construction**, buntinconstruction.com..... (541) 776 0032
- JB Steel**, jbsteelconstruction.com..... (541) 773 8325
- Outlier Construction**, outlierbuilt.com..... (541) 622 2040
- S+B James**, sbjames.com..... (541) 826 5668
- Vitus Construction**, vitusconstruction.net..... (541) 855 7177

Contractors / Handyman

General Contractors

- ★ **Abound Excavation**, abound-excavation.com..... (541) 646 4071
- Better Built Const.**, bbconstructionmedford.com..... (541) 690 1100
- BLD Construction**..... (541) 450 1141
- Christian Massey Construction**, cmc-built.com..... (541) 326 6169
- ★ **DMC Construction**, dmconstructionoregon.com..... (541) 254 4245
- Lucas Main Construction**, lmcoregon.com..... (541) 660 4053
- Parker Built**, parkerbuiltconstruction.com.com..... (541) 778 4771
- Southridge Builders**, southridgebuilders.com..... (541) 890 0437
- Summit Construction**, summitbroscp.com..... (541) 761 6020
- Taylorred Elements**, taylorredelements.com..... (541) 690 1617
- ★ **Vitus Construction**, vitusconstruction.net..... (541) 855 7177

Handyman

- ★ **AHC Maintenance**..... (541) 690 6312
- Elite Maintenance**, gotelitemaintenance.com..... (541) 500 1624
- Handyman Const.**, handymansouthernoregon.com... (541) 233 2917
- PropertyPros**, propertyprosoregon.com..... (541) 816 5920

Specialty Contractors

- AVS Elevator**, avselevator.com..... (503) 876 3696
- Bill's Glass**, billsglass.com..... (541) 773 5881
- Cut N' Break**, Concrete, cutnbreak.com..... (541) 779 1482
- Diamond D Welding**, diamonddwelding.com..... (541) 301 7696
- Mountain View Paving**, mountainviewpaving.com.... (541) 535 3840
- Otis Elevator**, otisworldwide.com..... (503) 639 7045
- Ram Jack**, Foundations, ramjackwest.com..... (541) 275 9097
- Sandeen Masonry**, sandeenmasonry.com..... (541) 479 8844
- S. Oregon Glass**, soglassandmirror.com..... (541) 500 1995
- Terra Firma**, Foundations, goterrafirma.com..... (541) 667 0700

Consultants

Land Use

- ★ **CSA Planning**, csaplanning.com..... (541) 779 0569
- LaNier Land Consulting**, lanierconsultingor.com..... (541) 879 3477
- Green Top Planning**, greentoppdr.com..... (517) 582 7300
- Richard Stevens & Assoc.**, rsaoregon.com..... (541) 773 2646

Specialities

- Advanced Diag.** (air quality), indoordiagnosics.com.. (541) 301 2231
- Neilson Research**, (water quality) nrclabs.com..... (541) 770 5678
- Parsons Water Rights**, parsonswater.com..... (541) 499 0257
- TRC Co.**, (EnergyTrust), trccompanies.com..... (541) 592 9203
- Water Right Services**, oregonwater.us..... (541) 389 2837

Doors (Garage, Overhead, Dock Doors)

- American Industrial Door**, americandoorllc.com..... (541) 644 5555
- Bear Creek Overhead**, bearcreekoverhead.com..... (541) 821 1736
- Overhead Door Co. of Rogue Valley**, odcrv.com..... (541) 702 0820
- Pacific Door & Sash**, pacificdoorandsash.com..... (541) 826 3944

Electrical

- JT Electric**..... (541) 734 5714
- Murphy Electric**, murphymadeinc.com..... (541) 582 4186
- Precision Electric**, precisionelectric.co..... (541) 773 6279
- Siskiyou Electric**..... (541) 951 1092
- Welburn Electric**, welburnelectric.com..... (541) 535 3727
- Winters Electric**, winterselectric.com..... (719) 477 0535

Engineering

- Gerlitz Engineering**, gerlitzengineering.com..... (541) 244 2617
- KAS & Associates**, kasinc.com..... (541) 772 5807
- Marquess Inc.**, marquess.com..... (541) 772 7115
- Mockridge Eng.**, mockridgeengineering.com..... (541) 892 3289
- Powell Eng.**, powellengineeringconsulting.com..... (541) 613 0723

Environmental

- ★ **Alpine Environmental**, alpineabatment.com..... (541) 944 4685
- Green Environmental**, green-em.com..... (855) 277 5307
- Western States Enviro.**, wsenvironmental.com..... (541) 770 2482

Equipment Rental

- FMI Equipment**, fmiequipment.com..... (800) 287 2048
- Sunbelt Rentals**, sunbeltrentals.com..... (541) 779 2855
- Steward's Porta Potties**, stewardsportapotties.com.. (541) 734 7343
- Wilson Equipment**, wilsonequipment.net..... (541) 830 3966
- United Rentals**, unitedrentals.com..... (541) 773 7323

Fencing (Rental & Permanent)

- Medford Fence**, medfordfenceco.com..... (541) 779 5625
- Mountain View Fence**, mountainviewfence.org..... (541) 879 0126
- Quality Fence**, qualityfenceco.com..... (541) 644 2281

HVAC

- ★ **Advanced Air & Metal**, myadvancedair.com..... (541) 772 6866
- Jahnke Heating & AC**, jahnkeheatingandair.com..... (541) 535 4470
- Long's HVAC**, longshvac.com..... (541) 772 4201
- Metal Masters**, metalmasters-inc.com..... (541) 779 1049
- Rogue Valley H&AC**, rvheat.com..... (541) 215 4760
- S. Oregon Heating & AC**, sohac.com..... (541) 773 8733
- Stone Heating & Air**, stoneheatair.com..... (541) 855 5521



The Merit Pages - Vendor Directory

Insurance (Commercial Property)

- ★ **Country Financial**, countryfinancial.com..... (541) 779 8893
- Hart Insurance**, hartinsurance.com..... (541) 779 4232
- Highstreet Insurance**, hsp.com..... (541) 779 0177
- Midland Empire**, midlandempireinsurance.com..... (541) 476 7715

Inspections

- GOHI**, greateroregonhomeinspections.com..... (541) 282 3141
- NPI SW Oregon**, npiweb.com..... (541) 210 8055
- Partner ESI**, partneresi.com..... (800) 419 4923
- Peak Inspections**, peakbuildinginspections.com..... (541) 951 5484
- Rogue Inspection Services**, rogueinspection.com..... (541) 507 7674

Landscaping

Maintenance

- Bumgardners**, bumgardnerslandscape.com..... (541) 826 7713
- The Grounds Guys**, groundsguys.com..... (541) 982 2150
- Nature's**, naturelandscapedfordoregon.com..... (541) 821 5344
- US Lawns**, uslawns.com..... (541) 500 8650
- ★ **Villa's**, villaslandscapemaintenance.com..... (541) 973 5140

Landscape Design / Contractors

- CV Landscape**, cvlandscapemaintenance.com..... (541) 613 8535
- Gary Krause**, garykrauselandscape.com..... (541) 899 7643
- Terra**, terralandscapeandconstruction.com..... (541) 778 9843

Lending

Regionals / National Banks with Local Presence

- Banner Bank, Jay Stormberg**, bannerbank.com..... (541) 608 5053
- Evergreen, Kris Woodburn**, evergreenfederal.bank... (541) 479 3351
- First Interstate, Todd Fryer**, firstinterstatebank.com. (541) 608 8971
- People's, Jason Reno**, peoplesbank.bank..... (541) 776 5350
- Rogue Credit Union**, roguecu.org..... (541) 734 0607
- WaFd, Bryan Pistole**, wafdbank.com..... (541) 858 2989

SBA / Private Lending

- Jessica Ayers (SBA, Evergreen Federal)** (800) 878 6613
- Legacy Lending (Private), Dane Fitch** (206) 972 8127
- Pacific Capital (Private), pac-capital.com**..... (541) 973 2444
- Sophia Harding (SBA, Columbia Bank),** (541) 227 0311

Locksmith

- Bear Creek Lock**, bearcreeklock.com..... (541) 770 5888
- J&L Pacific**, jandlpacificlockandkey.com..... (541) 930 8363
- ★ **The Keyman**, tkms.com..... (541) 690 1751

Movers

- Back Savers**, backsaversmovingservice.com..... (541) 944 4820
- Hall of Fame**, halloffamemovingllc.com..... (541) 778 1845
- Skinny Wimp Moving**, skinnywimpmoving.com..... (541) 531 3634

Painting

- Brotherhood Painting**, brotherhood-painting.com..... (541) 301 5862
- Corey Robbins**, coreyrobbins.com..... (541) 770 5275
- ★ **Coyotl Painting**, coyotlpainting.com..... (541) 630 1174
- Rick Stevens**, rickstevenspainting.com..... (541) 973 1729

Property Management

- Cornerstone Property Management**,..... (541) 200 3954
- CPM**, cpmrealestateservices.com..... (541) 773 6400
- ★ **Integrity PM**, integritypropertymanagement.com..... (541) 414 4477

Pest Control

- A-1 Exterminators**, aone-exterminators.com..... (541) 472 1094
- Action Pest**, actionpestcontrolmedford.com..... (541) 770 9510
- ★ **Axiom Pest Control**, axiompest.com..... (503) 772 9466
- Bugs Northwest**, bugsnw.com..... (541) 472 5003
- Pointe Pest Control**, pointepest.com..... (541) 526 5692

Plumbing

- Accurate Plumbing**, accurate-plumbing.com..... (541) 773 3035
- Artoff Plumbing**, artoffplumbing.com..... (541) 582 0853
- HD Plumbing**, hdplumbingoregon.com..... (541) 646 0407
- Hukill's Plumbing**, hukills.com..... (541) 734 9000
- Jennings Plumbing**, jenningstheplumber.com..... (541) 261 5724
- SOS Plumbing**, sosplumbing.net..... (541) 535 5063
- Tanks Plumbing**, tanksplumbing.net..... (541) 879 3777

Remediation / Restoration

- ★ **Belfor**, belfor.com..... (541) 644 5454
- ProKleen**, getprokleen.com..... (541) 857 1818
- Rogue Restoration**, roguerestorationpros.com..... (541) 778 1552
- ServiceMaster**, servicemasterrestore.com..... (541) 249 7914

Roofing / Solar

- Bleser Built**, bleserbuiltroofing.com..... (541) 601 7870
- Hoag Roofing**, hoagroofing.com..... (541) 779 7743
- JAM Roofing**, jamroofing.com..... (541) 773 7663
- Lawless Roofing**, lawlessroofing.com..... (541) 479 1839
- Pressure Point**, pressurepointroofing.com..... (541) 876 8209
- Purelight Power**, purelightpower.com..... (541) 816 4047
- Rivas Roofing**, rivasconstructionandroofing.com..... (541) 512 1337
- Sunshine Solar**, sunshinesolarinc.com..... (541) 236 1767
- True South Solar**, truesouthsolar.net..... (541) 203 0525

Security / Locksmith

Physical Security

- Concierge Security**, concierge-security.com..... (541) 218 9672
- Maksimum Security**, maksimuminc.com..... (541) 608 2820
- NW Defense Contracting**, nwdefcon.com..... (541) 500 4066

Access Controls / Monitoring / Life Safety

- C&S Fire Safe Services**, csfiresafe.com..... (541) 673 1337
- Cook Solutions Group**, cooksolutionsgroup.com..... (844) 305 2665
- Johnson Controls**, johnsoncontrols.com..... (541) 857 5112
- Point Monitor**, pointmonitor.com..... (541) 210 8738
- Pye Barker**, pyebarkerfs.com..... (541) 245 9223
- SOS Alarm**, sosasap.com..... (541) 507 9084
- Vyanet Security**, vyanetsecurity.com..... (541) 295 3223

Surveyors / Drafting

- Hoffbuhr & Assoc.**, hoffbuhr.com..... (541) 779 4641
- L.J. Friar & Assoc.**, friarandassociates.com..... (541) 772 2782
- Metzger Survey**, metzgersurveying.com..... (541) 727 2749
- Neathamer Survey**, neathamer.com..... (541) 732 2869
- Pacific Crest Survey**, pacificcrestsurveying.com..... (408) 375 5220
- Pariani Land Surveying**, parianils.com..... (541) 890 1131
- TerraSurvey**, terrasurveyinc.com..... (541) 482 6474

Signage / Printing

- Minuteman Press**, minuteman.com..... (541) 776 7966
- ProntoPrint**, goprnto.com..... (541) 779 1952
- ProVisual Design**, pvdprints.com..... (541) 772 8045
- Ramsay Signs**, ramsaysigns.com..... (541) 664 7704
- ★ **SignApply**, signapplymedford.com..... (541) 414 7620
- SignDude**, thesigndude.com..... (541) 858 2701
- SignsNow**, signsnow.com..... (541) 608 6800

Notes & Background

This vendor directory is tailored to commercial property owners or asset managers (the "Contracting Party") and covers the most common recommendations we give. We do not provide blanket recommendations for attorneys or finance/tax professionals, but may provide them based on your specific scenario - please contact us. Vendors marked with a star symbol indicate that Merit Commercial Real Estate ("MCRE") may receive compensation from this vendor. MCRE assumes absolutely no liability or responsibility for the actions of any vendor on this list. It is the responsibility of the Contracting Party to independently vet, verify, pay, manage, or otherwise work with any vendor. MCRE recommends all Contracting Parties obtain multiple bids/proposals for all work contemplated.



Contact listing brokers for additional information

Scott King | Principal Broker | **Caspian Hoehne** | Broker

(541) 608-6704 / team@merit-commercial.com

www.merit-commercial.com