



WILLIAM - GREEN
REAL ESTATE

*Specialized in all your Real Estate needs in
Williamsburg and Greenpoint.*

Michal Kuras
Real Estate Broker
williamgreenre@gmail.com
646.284.2026



319 Wythe Avenue Brooklyn, N.Y. 11249

Prime Retail

Location, location, location. Located on Wythe Ave between South 2nd Street and South 3rd Street. One of the most vibrant place in the neighborhood. Retail space consist of 900 sq. ft. on the ground floor plus 400 sq. ft. on the second floor with 500 sq. ft. private terrace.

Rent: \$12,000 per month

319 Wythe Avenue | Williamsburg, Brooklyn

Rare opportunity to lease retail space on one of the most coveted corners in Williamsburg — the intersection of Wythe Avenue and South 2nd Street.

Positioned directly across the street from some of the neighborhood's busiest destinations, including Sundays in Brooklyn and 12 Chairs Café, this location benefits from constant foot traffic from locals, office workers, tourists, and residents of the surrounding luxury developments.

The property sits directly across from Rivian's Williamsburg showroom and is surrounded by some of Brooklyn's most popular restaurants, cafés, boutiques, and gelato shops. Just one block from the Domino Waterfront development and Domino Park, the area continues to experience tremendous residential and commercial growth.

The space consists of approximately 900 SF on the ground floor, plus 400 SF on the second floor and a private 500 SF terrace, offering a unique opportunity for retail, showroom, gallery, wellness, office, or specialty food uses.

This is one of the premier retail corners in Williamsburg, offering unmatched visibility, strong pedestrian traffic, and immediate access to the neighborhood's most sought-after amenities.

Asking Rent: \$12,000 per month

Highlights

- * Prime corner location at Wythe Ave & South 2nd St
- * Across from Sundays in Brooklyn and 12 Chairs Café
- * Rivian showroom directly across the street
- * One block from Domino Park and the Domino Waterfront development
- * Surrounded by restaurants, cafés, boutiques, and luxury residential buildings
- * Ground floor retail with second-floor space and private terrace
- * Exceptional visibility and foot traffic in the heart of Williamsburg's retail corridor

Transportation



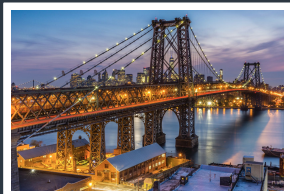
L train Bedford Avenue stop - 10 Blocks - 10 min.



J M Z trains Broadway Street stop - 8 Blocks - 8 min.



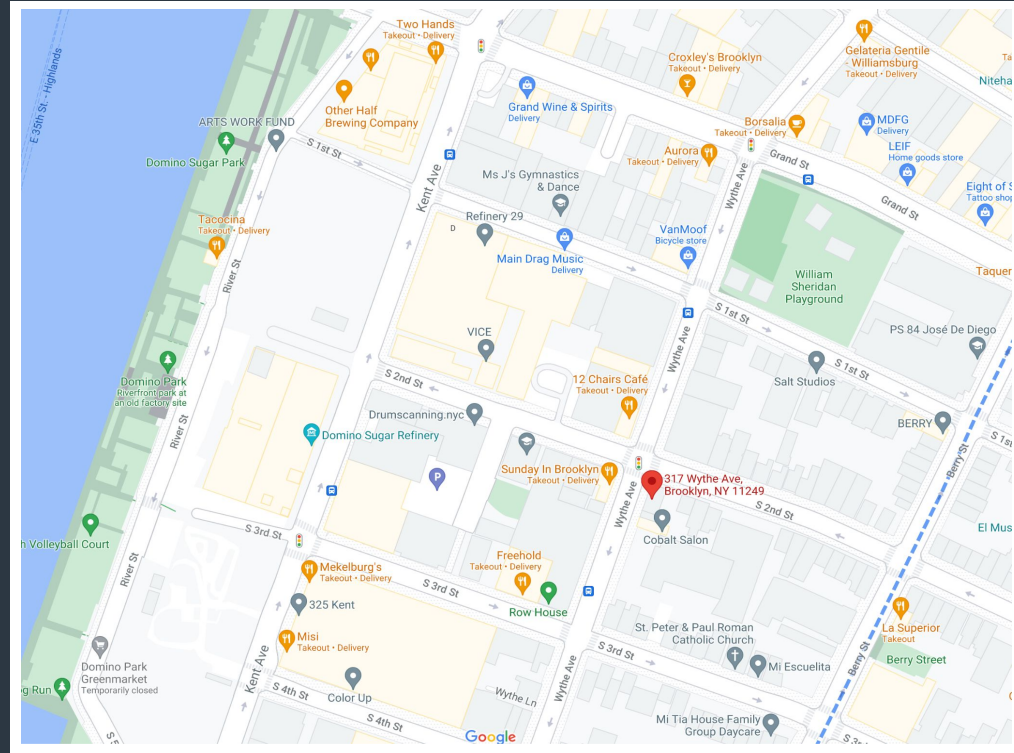
North 7th Street Ferry - 9 Blocks - 9 min.



Williamsburg Bridge - 5 Blocks - 5 min.

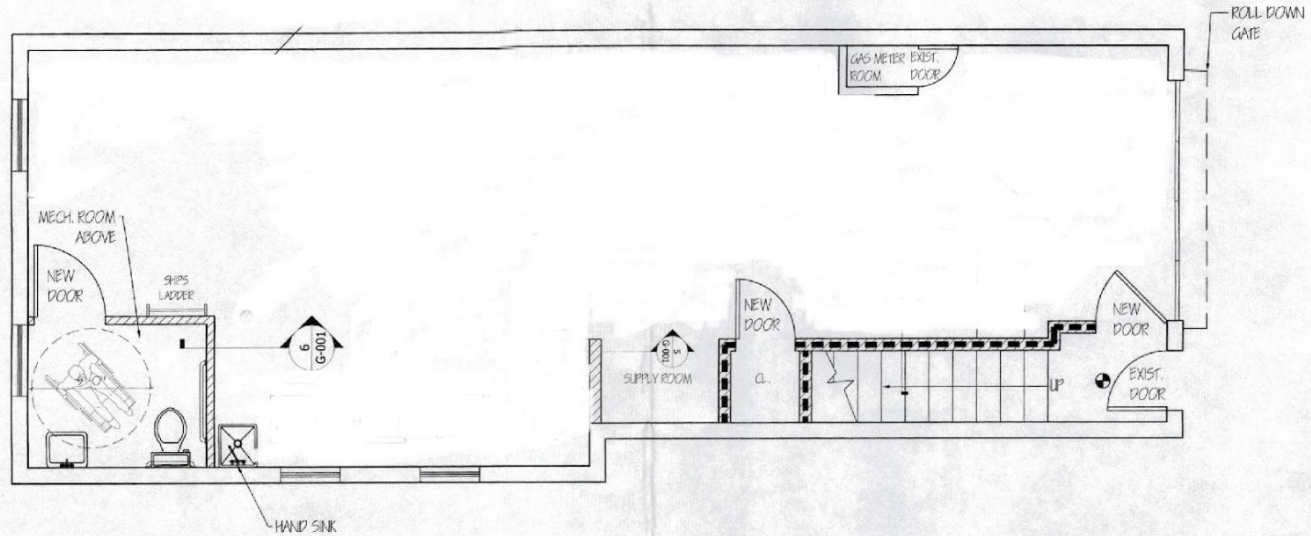
Location

319 Wythe Avenue
Brooklyn, N.Y. 11249



Floor plan 1st Floor

319 Wythe Avenue
Brooklyn N.Y. 11249

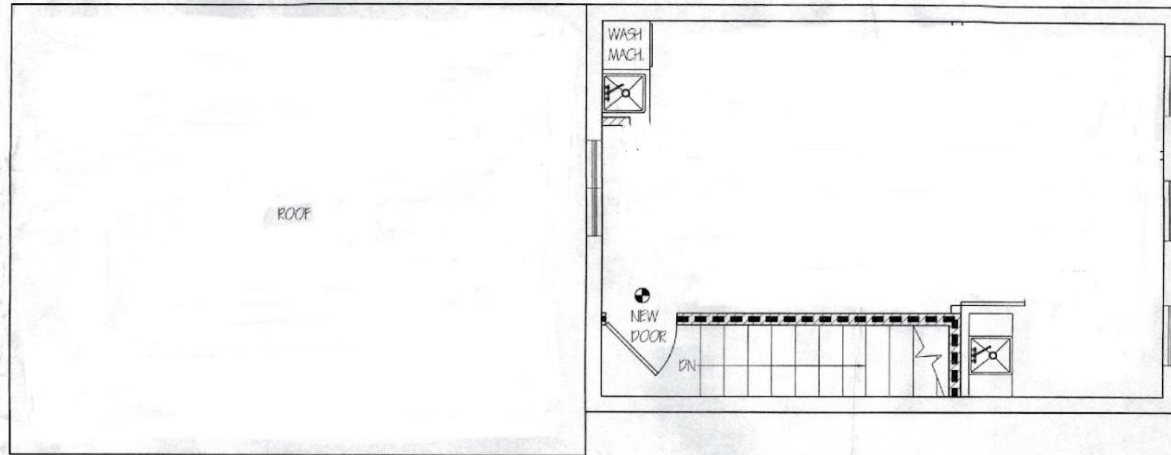


1 FIRST FLOOR PLAN

Scale: 1/4"=1'-0"

Floor plan 2nd

319 Wythe Avenue
Brooklyn N.Y. 11249



2 SECOND FLOOR PLAN

Scale: 1/4" = 1'-0"