

410 W 4TH

MEATPACKING OFFICE OPPORTUNITY

BETWEEN WASHINGTON STREET AND 9TH AVENUE

CURRENT 

410 W 14TH

SIZE

Full 2nd Floor: 3,578 RSF

ASKING PRICE

Upon request

TERM

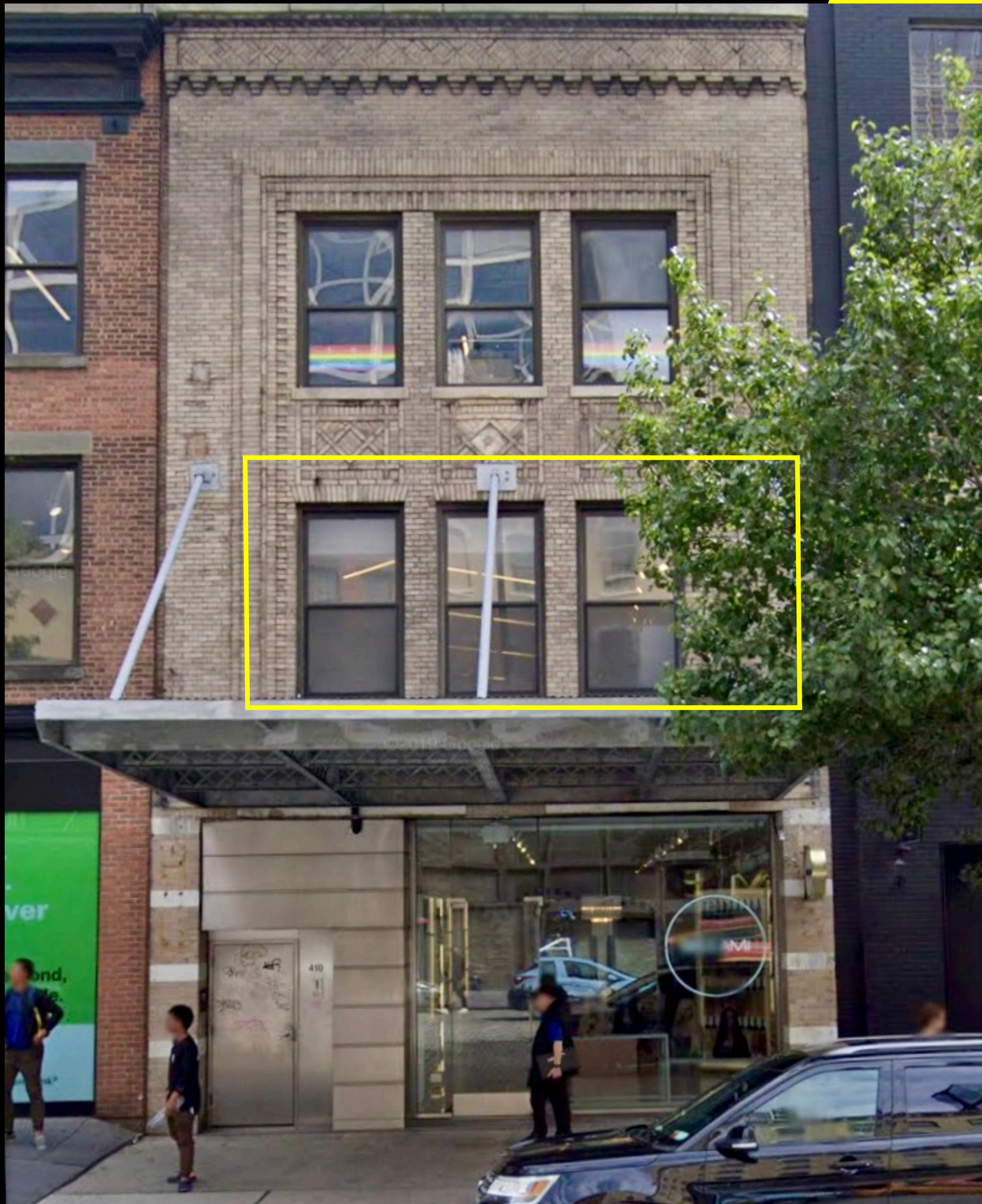
Negotiable

HIGHLIGHTS

- Full floor office opportunity located in the heart of the Meatpacking District
- Currently built out with:
 - 9 Private offices
 - Conference room
 - Reception area
 - 3 Large co-working spaces
 - 2 Private restrooms
- High ceilings
- Hardwood floors throughout
- Tenant-controlled advanced air filtration system



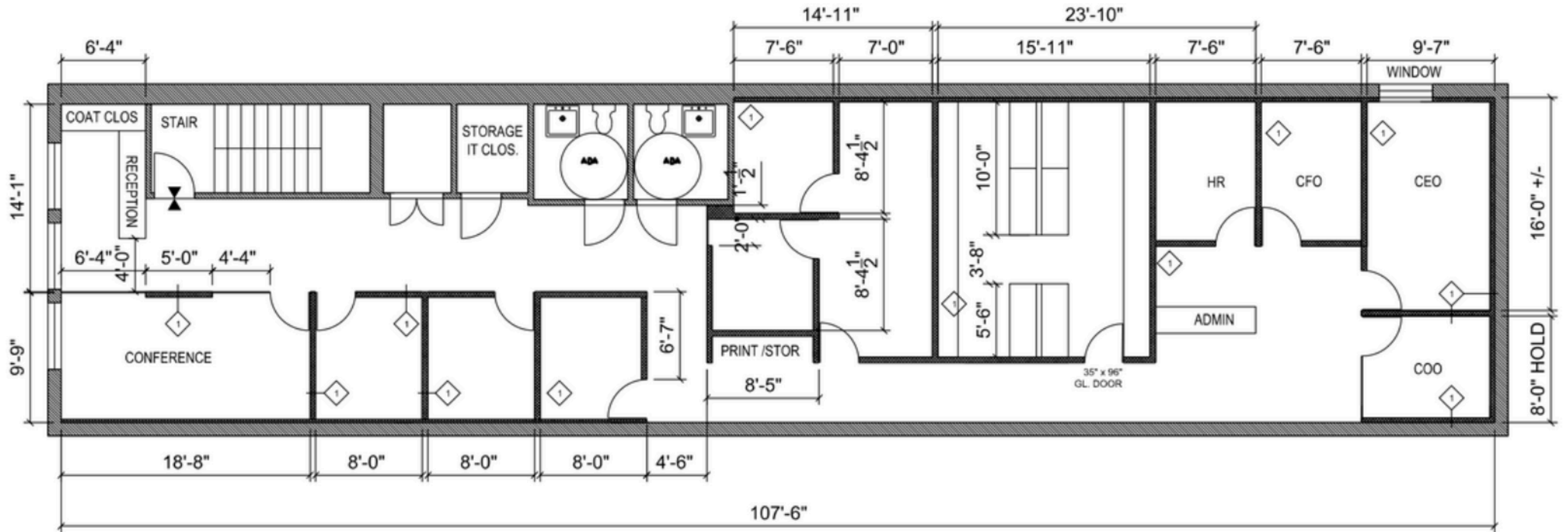
410W14TH



410W14TH

FLOOR PLAN

AS BUILT





CONTACT

ODED NACHMANI
oded@currentadvisors.com
516.652.0606

CURRENT[®]
Real Estate Advisors