



March 12, 2024

Re: Utility Request Burger Box located at 81201 Indio Blvd.

Dear Kate:

Please find attached PDF files of our facilities covering the areas you have requested. The information we have provided was obtained from a search of all our available records and are approximate in nature. If exact location and material are required, It is the responsibility of the developer or engineering firm to determine if a conflict exist between the proposed development and our facilities.

Also attached is a base map showing the Indio Water Authority domestic mains colored in blue.

If you have any question or need additional information, please call me at (760) 625-7737 or email me at lehernandez@indio.org.

Best Regards,

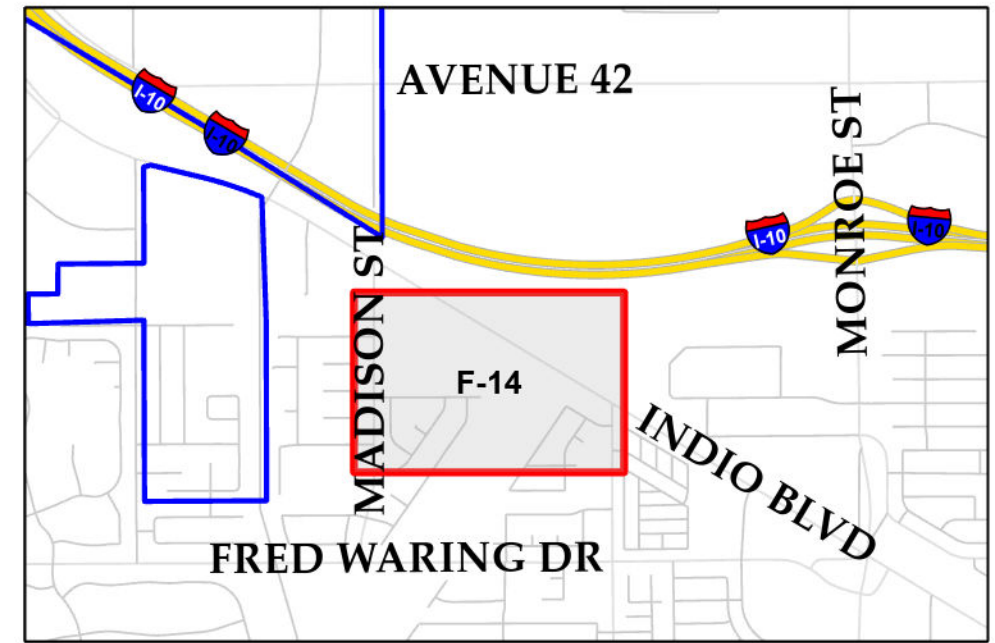
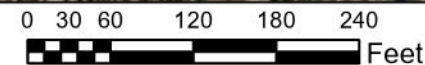
Luis Hernandez
Water Engineering Tech. I
Indio Water Authority

Attachments: Exhibit Map, MITCHELL MINI STORAGE AS_BUILTS

cc: Roman Gonzalez, Water Project Construction Manager, Indio Water Authority
Ines Campos, Junior Engineer
Brandon Gonzalez, Water Operations Inspector II, Indio Water Authority



Map Grid Exhibit



Map Grid Index:

Legend

- IWA Existing Mains
- Hydrants**
- OwnedBy**
- ◆ Indio Water Authority
- IWA_Service_Area

Exhibit Map
Burger Box
 81201 Indio Blvd.
 Indio CA 92201



MAP DISCLAIMER:

This is not an official map. Indio Water Authority (IWA) does not guarantee the accuracy of the data in the map. Any errors or omissions shall not be considered the responsibility of the IWA.



IWA Distribution Water Mains

Drawn By: lehernandez
 Checked by:
 Date: 3/12/2024

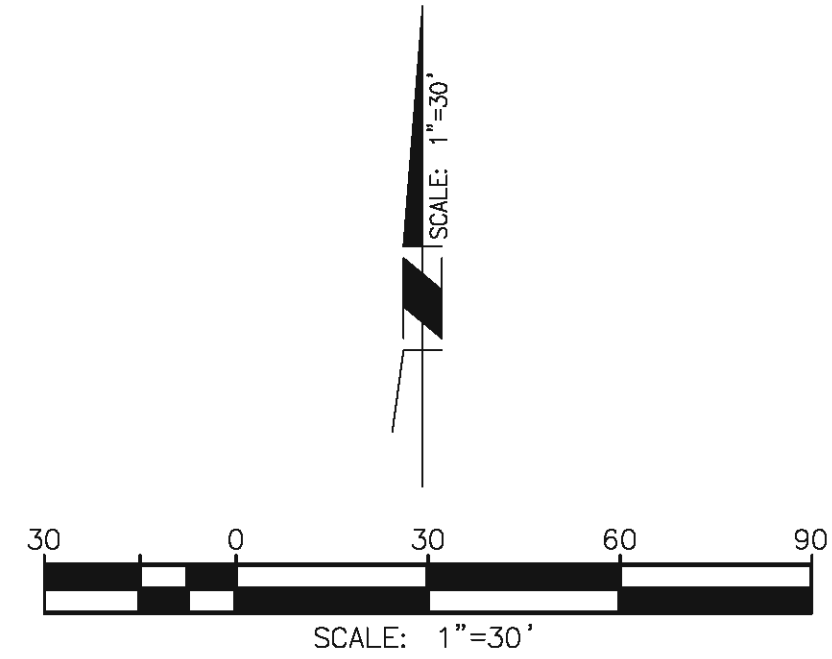
WATER DATA TABLE (CL-350)			
NO.	BEARING/Delta	LENGTH	NOTE
1	N 30° 49' 40" E	95.02'	8" D.I. PIPE
2	N 75° 17' 44" E	30.06'	"
3	N 30° 17' 44" E	98.74'	"
4	N 08° 53' 17" E	79.33'	"
5	N 30° 49' 40" E	178.27'	"
6	N 89° 48' 30" E	208.67'	"
7	N 45° 11' 30" W	25.46'	"
8	N 00° 11' 30" W	40.75'	"
9	N 30° 47' 17" E	236.68'	"
10	N 67° 30' 00" E	40.74'	"
11	N 74° 58' 47" E	93.09'	"
12	N 29° 58' 47" E	197.45'	8" D.I. PIPE

CONSTRUCTION NOTES

- 20 CONSTRUCT 8" D.I. WATER PIPE (CL-350, RESTRAINED) WITH THRUST BLOCKS AND APPURTENANCES PER IWA STD DWG. 709. SEE FD SPECIFICATIONS FOR PRIVATE SECTIONS.
- 21 CONSTRUCT 6" D.I. WATER PIPE (CL-350, RESTRAINED) WITH THRUST BLOCKS AND APPURTENANCES PER IWA STD DWG. 709. SEE FD SPECIFICATIONS FOR PRIVATE SECTIONS.
- 22 INSTALL 4" WATER SERVICE WITH MANIFOLD PER IWA STD. DWG. 701 AND 702.
- 23 INSTALL FIRE HYDRANT (WET BARREL TYPE) ASSEMBLY PER IWA STD. DWG. 704B.
- 24 INSTALL 12" X 8" D.I. TEE (RESTRAINED) WITH THRUST BLOCKS AND APPURTENANCES PER IWA STD. DWG. 709.
- 25 INSTALL 8" X 6" D.I. TEE (RESTRAINED) WITH THRUST BLOCKS AND APPURTENANCES PER IWA STD. DWG. 709.
- 26 INSTALL 8" D.I. BEND (RESTRAINED) WITH THRUST BLOCKS AND APPURTENANCES PER IWA STD. DWG. 709.
- 28 INSTALL 8" R.W. GATE VALVE AND THRUST BLOCK PER IWA STD. DWG. 717.
- 29 INSTALL 6" R.W. GATE VALVE AND THRUST BLOCK PER IWA STD. DWG. 717.
- 30 INSTALL 6" DOUBLE DETECTOR CHECK ASSEMBLY PER IWA STD. DWG. 703.
- 31 INSTALL FIRE DEPARTMENT CONNECTION (FDC) AND POST INDICATOR VALVE (PIV) PER CITY OF INDIO STD. DWG. SW-10.
- 32 INSTALL 2" WATER SERVICE W/ 2" METER AND BFP DEVICE (FEBCO 825YA) PER IWA STD. 700 AND 702.
- 33 INSTALL 1" IRRIGATION SERVICE W/ 1" METER AND BFP DEVICE (FEBCO 825YA) PER IWA STD. 700 AND 702.
- 34 INSTALL BLUE D.O.T. PAVEMENT MARKER PER IWA STANDARDS.
- 35 INSTALL 12" R.W. GATE VALVE AND THRUST BLOCK PER IWA STD. DWG. 717.

NOTE TO CONTRACTOR:
FOR PRIVATE FIRE PROTECTION SYSTEMS, THRUST BLOCKS SHALL MEET CURRENT FIRE DEPARTMENT THRUST BLOCK SPECIFICATIONS.

DIG ALERT
DIAL TOLL FREE
1-800-227-2600
AT LEAST TWO DAYS
BEFORE YOU DIG
UNDERGROUND SERVICE ALERT OF SOUTHERN CALIFORNIA



ENGINEER'S CERTIFICATION

I, MING-YANG TAN, HEREBY CERTIFY THAT THE WATER SYSTEM DESIGNED HEREON IS IN ACCORDANCE WITH THE REQUIREMENTS PRESCRIBED BY THE INDIO WATER AUTHORITY, THE INDIO FIRE SERVICES, THE CALIFORNIA FIRE CODE AND NFPA 24 TO SUPPLY THE MINIMUM FIRE FLOWS OF 1,500 GPM WITH 20 PSI RESIDUAL.

MING-YANG TAN, P.E. No. 65246, EXP. 9/30/2009 DATE _____

CONTRACTOR IS RESPONSIBLE TO COORDINATE WITH THE RIVERSIDE COUNTY FIRE DEPARTMENT TO CONDUCT A FINAL FIRE FLOW TEST OF NEW FIRE HYDRANTS, AFTER INSTALLATION, TO FIELD VERIFY THE MINIMUM ADEQUATE SUPPLY OF FIRE FLOW AND PRESSURE OF 1,500 GPM WITH 20 PSI RESIDUAL. NOTIFY ENGINEER OF RECORD IF FIRE FLOW TEST RESULTS DOES NOT MEET ABOVE REQUIREMENTS.

REVISIONS NO. BY DATE REMARKS		APPROVED BY RIVERSIDE COUNTY DEPARTMENT OF FIRE PROTECTION NAME DATE		DESIGN BY MYT DRAWN BY MYT CHECKED BY MYT SCALE AS SHOWN		FIRM NAME : WLD Wright Land Development Inc. CIVIL ENGINEERING & SURVEYING ADDRESS : 73-280 HIGHWAY 111, SUITE 102 PALM DESERT, CA 92260 TELEPHONE (760) 341-8030 FAX (760) 341-8028		INDIO WATER AUTHORITY APPROVAL GARY F. LEWIS GENERAL SERVICES MANAGER DATE _____ ANDERS WISTRUM, Ph.D., P.E. PRINCIPAL ENGINEER RCE C 67887 DATE _____		INDIO WATER AUTHORITY TELEPHONE (760) 391-4161 FAX (760) 347-4190 83-101 Avenue 45, Indio, CA 92201 www.indio.org/water/water.htm		PROJECT TITLE MITCHELL MINI STORAGE WATER PLAN		DRAWING G-3 SHEET 3 OF 3 DATE NOV. 5, 2008 IWA NO. _____	
---	--	--	--	--	--	--	--	---	--	---	--	--	--	--	--

