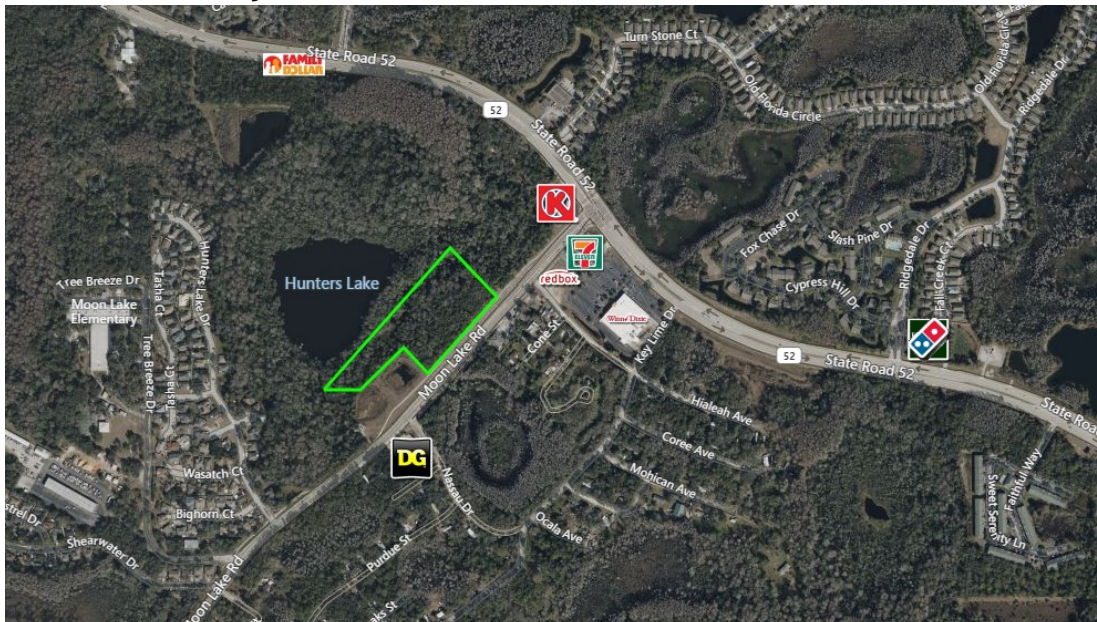


MOON LAKE ROAD

New Port Richey, FL 34654



FOR SALE

OFFERED FOR

\$899,000

7.89 ACRES

LOT SIZE

343,832 FT

SQUARE FOOTAGE

C-2

ZONING

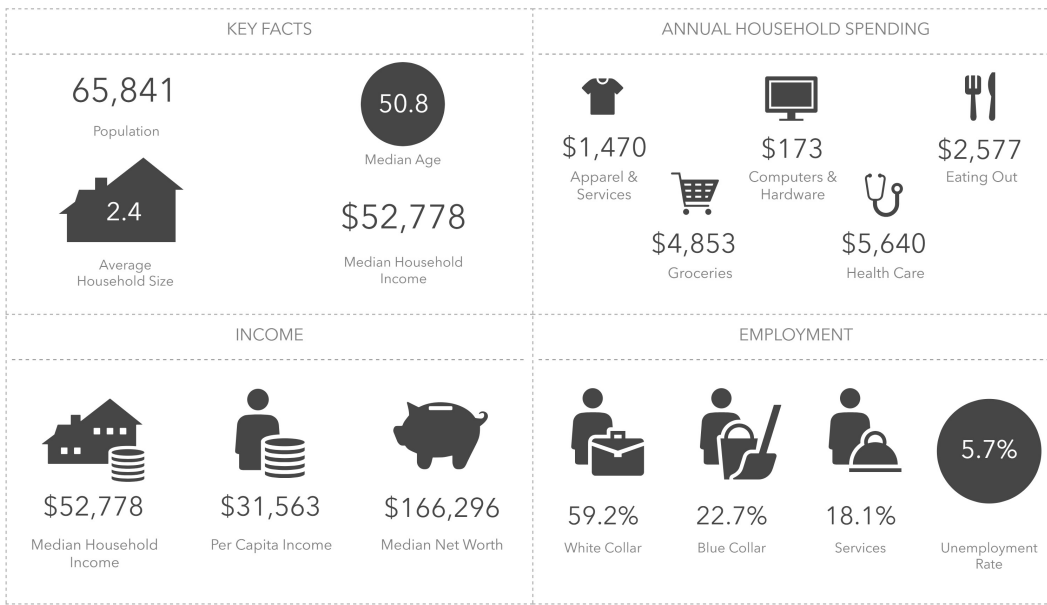
653± FT

FRONTAGE ON
MOON LAKE RD

VACANT COMMERCIAL LAND

7.89± acres of vacant land located along the west side of Moon Lake Road, approximately 1,000ft. south of S.R. 52. The property boasts 653ft of frontage along Moon Lake Road and is zoned Commercial-C2. With a future land use designation of Residential-6 du/ga, the potential for residential or commercial development is promising. County water and sewer lines are located on the west side of Moon Lake.

AREA DEMOGRAPHICS (5 MILE RADIUS)



- Approximately 6± Net Useable Acres
- Central Sewer and Water available from Pasco County
- Future Land Use: Residential-6 du/ga
- 6± Miles from U.S. 19
- 3.5± Miles from Suncoast Parkway



C. JOHN BRASHER & DREW GILMORE

Broker Associate & Commercial Advisor

727-514-8133 | 727-992-3056

jbrasher@bhhsflpg.com | dgilmore@bhhsflpg.com

7916 Evolutions Way, Ste 210, Trinity, FL

BERKSHIRE HATHAWAY | FLORIDA PROPERTIES GROUP
HOMESERVICES

