



111 West Mount Hope Avenue

Lansing, Michigan 48910

Property Highlights

- 11,994 SF available immediately
- Suites ranging from 11,000 - 29,000 SF also available
- Multiple dock and grade level doors
- Close proximity to I-496 freeway

Offering Summary

Lease Rate:	\$5.50 SF/yr (NNN)
Building Size:	143,738 SF
Available SF:	11,040 - 29,908 SF
Lot Size:	3.35 Acres

Spaces	Lease Rate	Space Size
2010 S Washington	\$5.50 SF/yr	14,492 SF
2020 S Washington	\$5.50 SF/yr	11,994 SF
111 W Mt Hope	\$5.50 SF/yr	11,040 SF
125 W Mt Hope	\$5.50 SF/yr	29,908 SF

For More Information

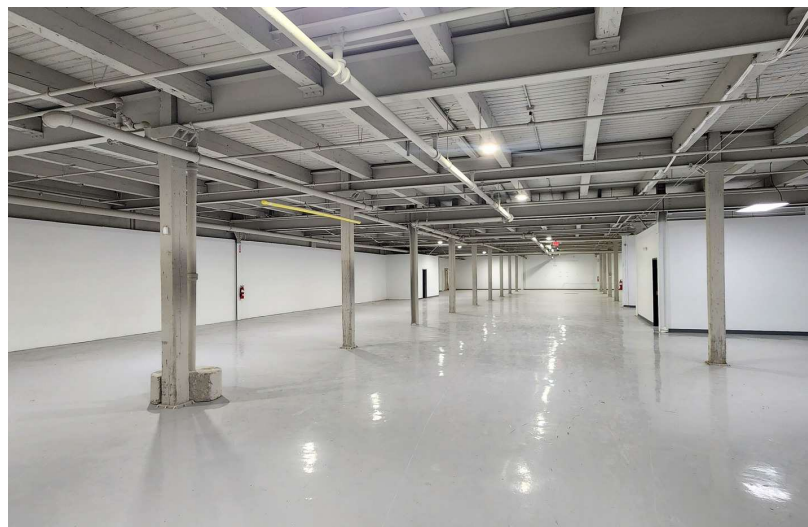
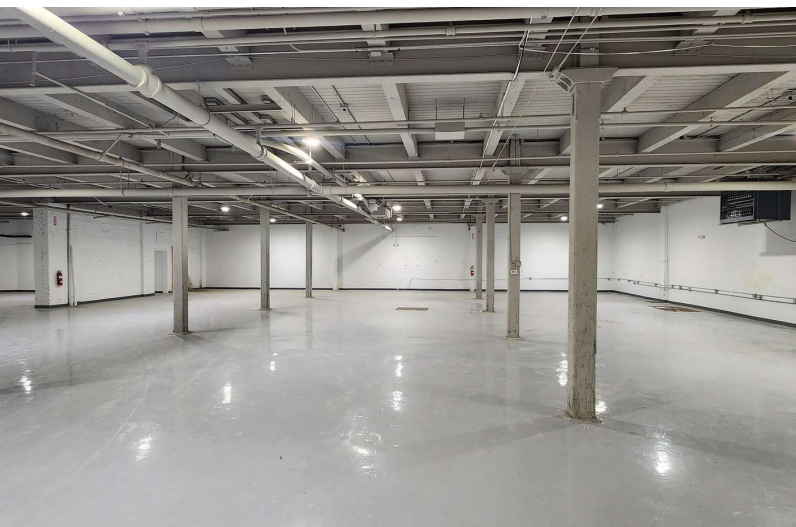
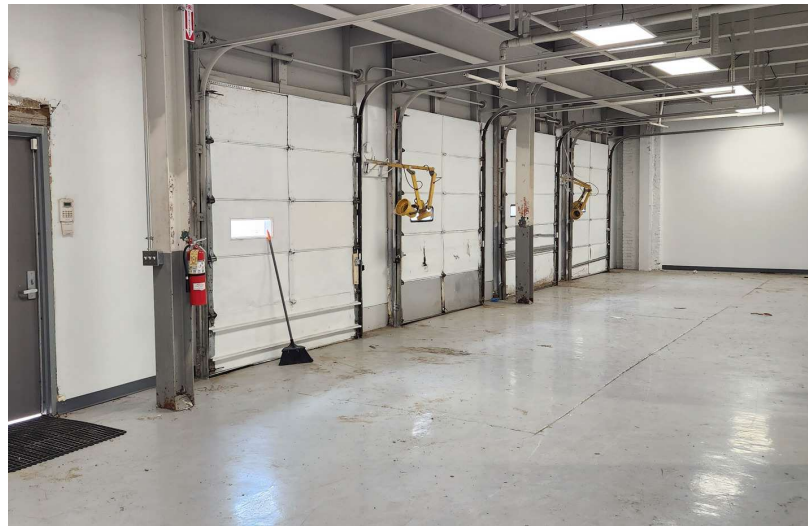


Jeffrey Branch

Commercial Advisor

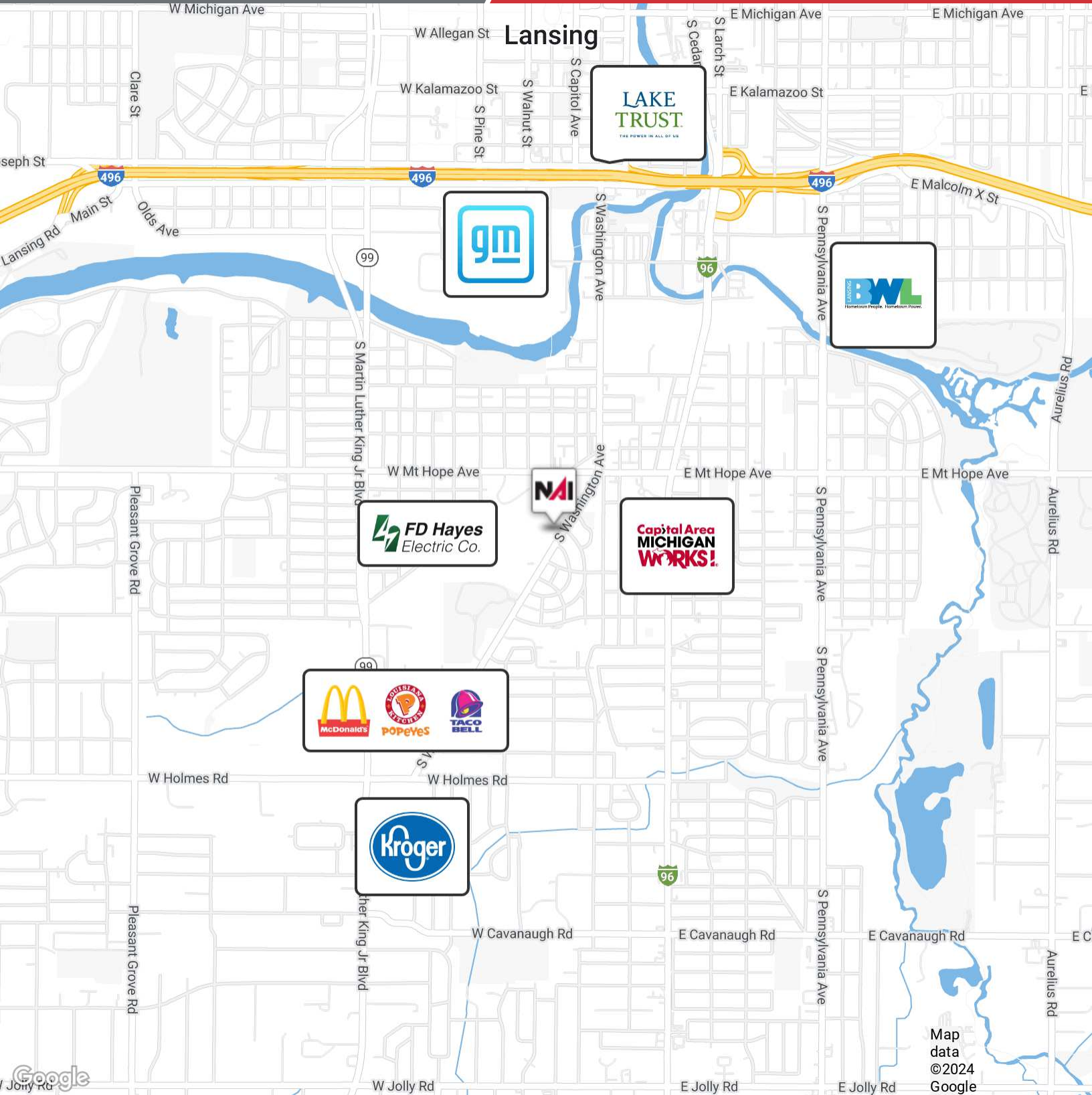
O: 517 487 9222 | C: 517 899 6368

jbranch@naimidmichigan.com

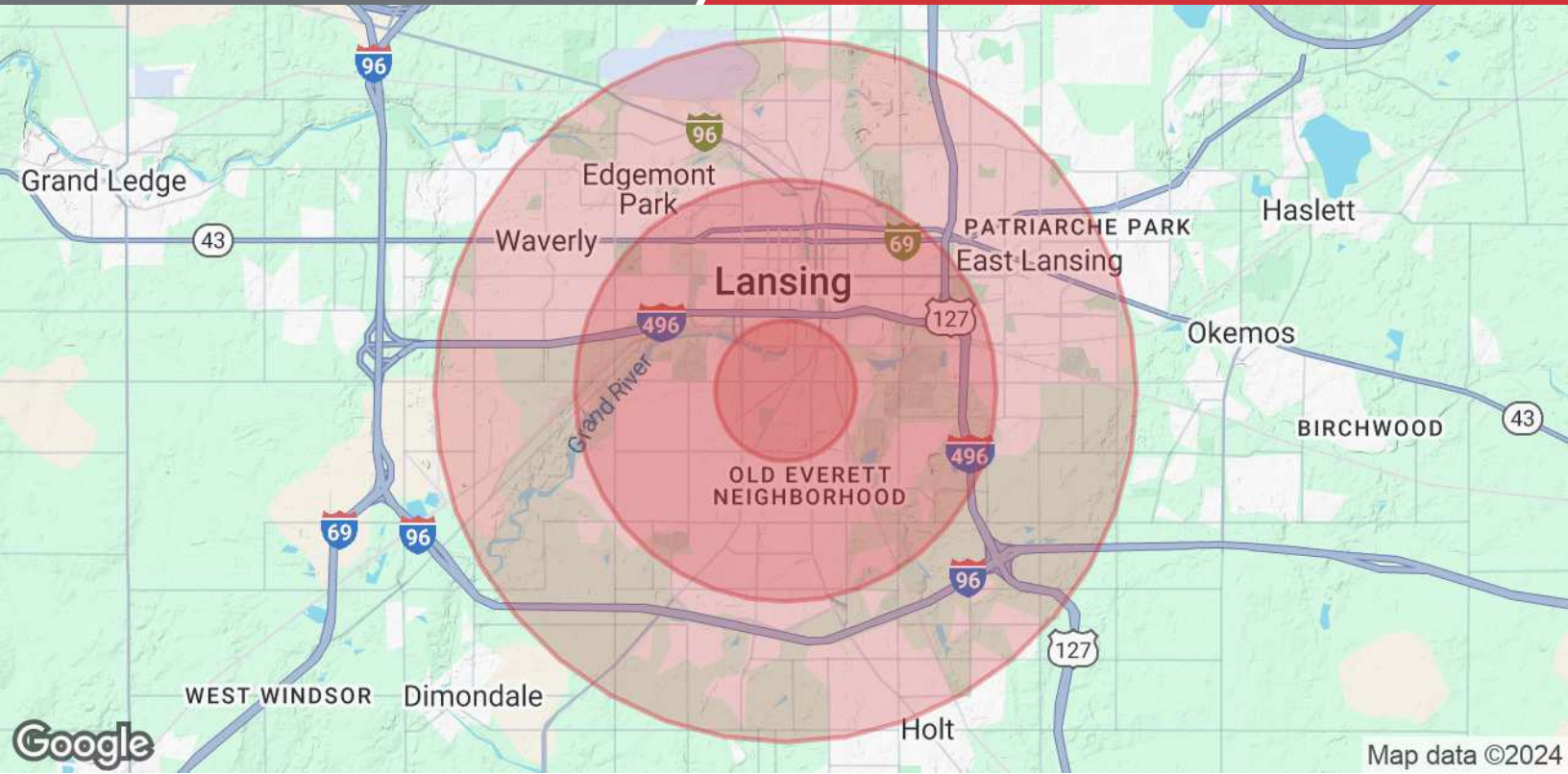


NO WARRANTY OR REPRESENTATION, EXPRESS OR IMPLIED, IS MADE AS TO THE ACCURACY OF THE INFORMATION CONTAINED HEREIN, AND THE SAME IS SUBMITTED SUBJECT TO ERRORS, OMISSIONS, CHANGE OF PRICE, RENTAL OR OTHER CONDITIONS, PRIOR SALE, LEASE OR FINANCING, OR WITHDRAWAL WITHOUT NOTICE, AND OF ANY SPECIAL LISTING CONDITIONS IMPOSED BY OUR PRINCIPALS. NO WARRANTIES OR REPRESENTATIONS ARE MADE AS TO THE CONDITION OF THE PROPERTY OR ANY HAZARDS CONTAINED THEREIN ARE INTENDED TO BE IMPLIED.

2149 Jolly Road, Suite 200
Okemos, MI 48864
517 487 9222 tel
naimidmichigan.com



Map data ©2024 Google



Population	1 Mile	3 Miles	5 Miles
Total Population	13,324	88,700	194,587
Average Age	38	38	37
Average Age (Male)	37	37	36
Average Age (Female)	39	39	38
Households & Income	1 Mile	3 Miles	5 Miles
Total Households	5,920	39,677	80,544
# of Persons per HH	2.3	2.2	2.4
Average HH Income	\$61,038	\$63,334	\$73,247
Average House Value	\$112,188	\$136,193	\$172,940

Demographics data derived from AlphaMap