



**CUSHMAN &
WAKEFIELD**

Commercial Kentucky



300 LOGISTICS AVENUE

JEFFERSONVILLE, IN 47130

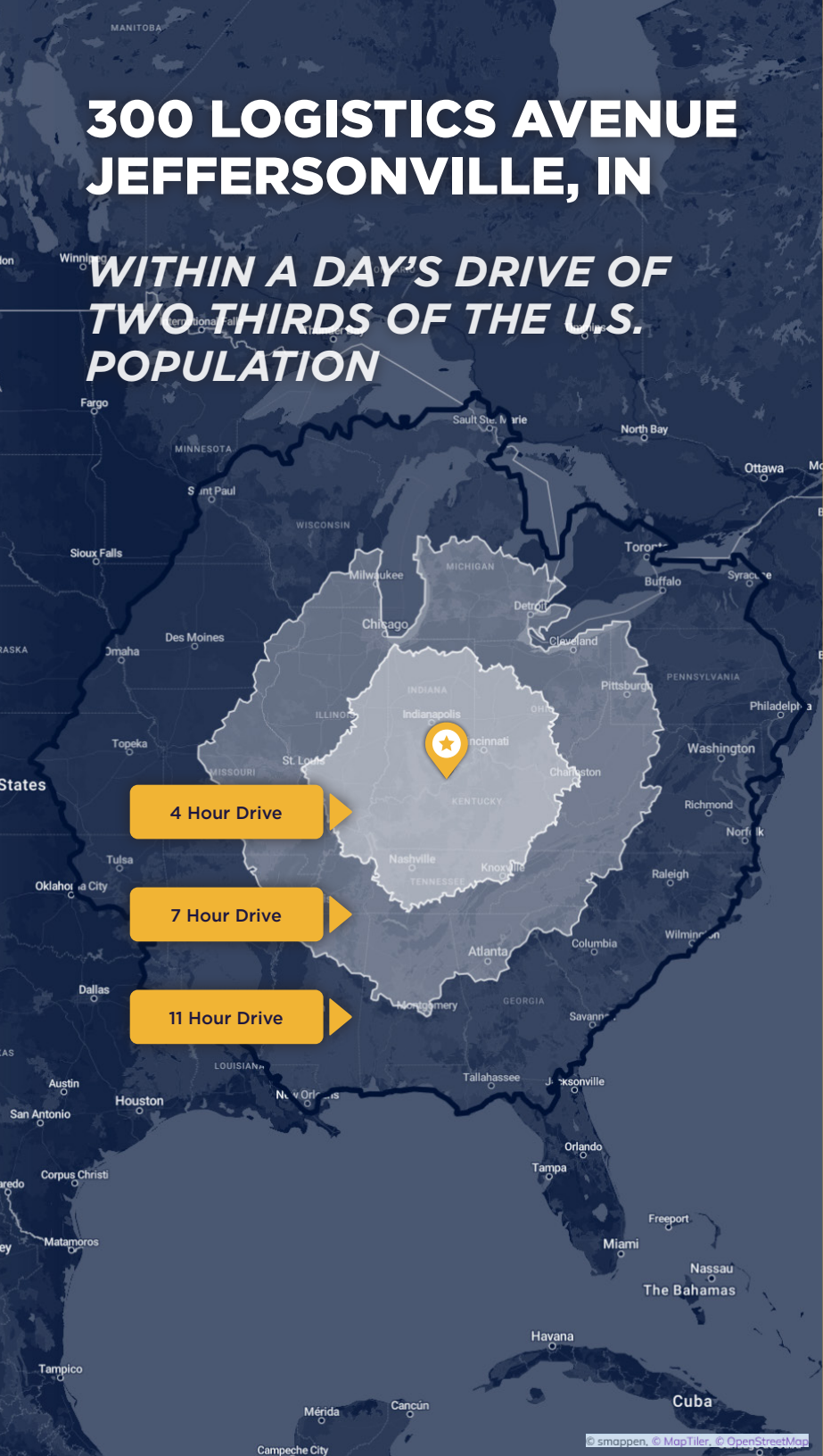
RIVER RIDGE COMMERCE CENTER

251,150 SF FOR LEASE



300 LOGISTICS AVENUE JEFFERSONVILLE, IN

*WITHIN A DAY'S DRIVE OF
TWO-THIRDS OF THE U.S.
POPULATION*



PROPERTY DESCRIPTION

Class A modern bulk distribution warehouse located in River Ridge Commerce Center on the corner of Trey Street and Logistics Avenue in Jeffersonville. The building offers the a rear-loaded design, 32' clear ceiling heights, with ample dock doors and parking. The building has an office area in place and is ready for occupancy.

SPECIFICATIONS

Building SF	251,150 SF	Docks	24
Spec Office	2,000 SF	Drive-In Doors	3
Acreage	±15 Acres	Column Spacing	54' x 50'
Zoning	IR	Speed Bay	54' x 60'
Building Class	Class A	Clear Height	32'
Year Built	2025	Truck Court	130'
Car Parking	150 Spaces	Lighting	LED
Trailer Parking	44 Spaces	AMPs	1,500A
Construction	Concrete	Floor Thickness	7" Slab
Sprinkler	ESFR	Roofing	TPO Membrane

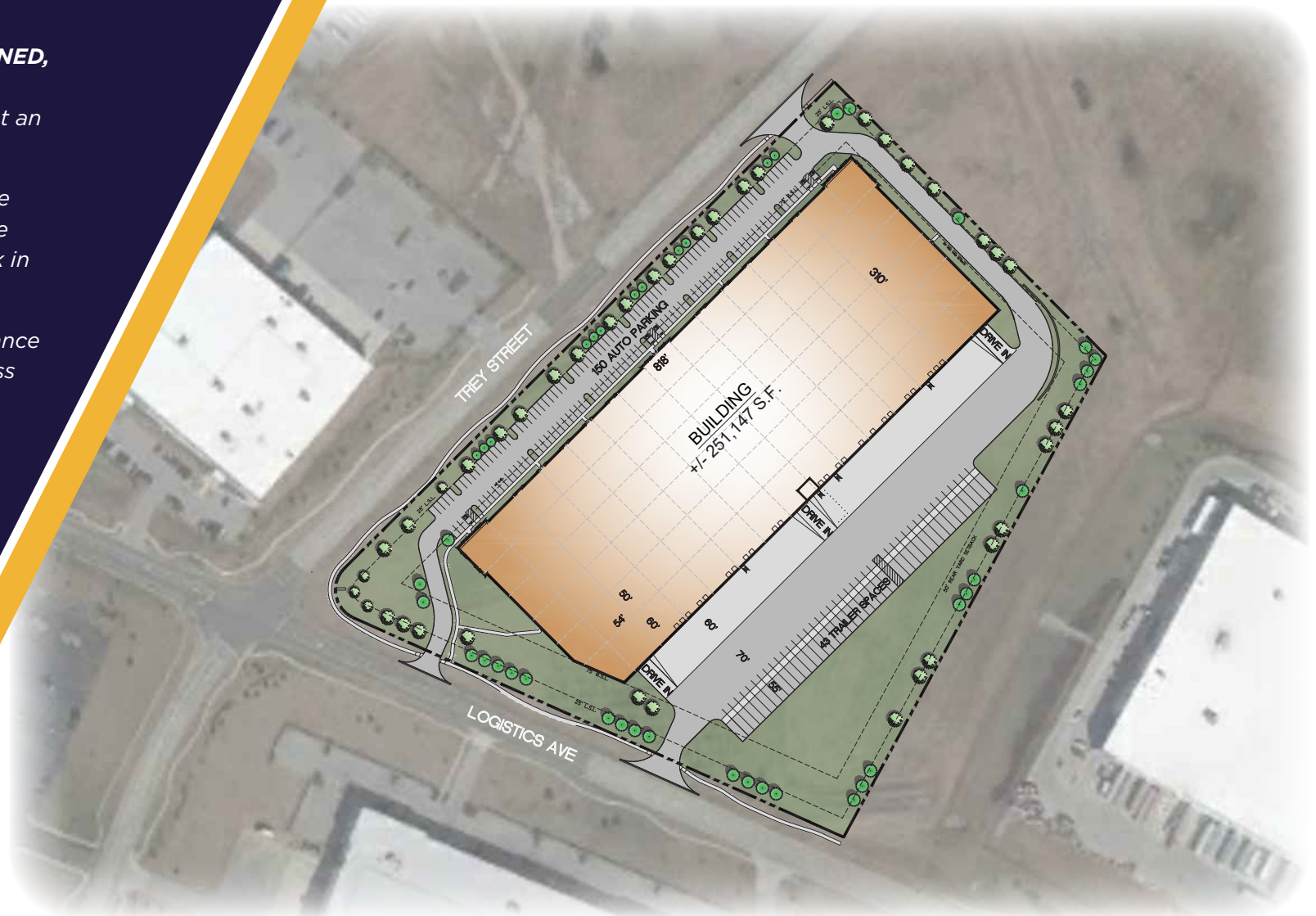
SITE PLAN

FULL BUILDING

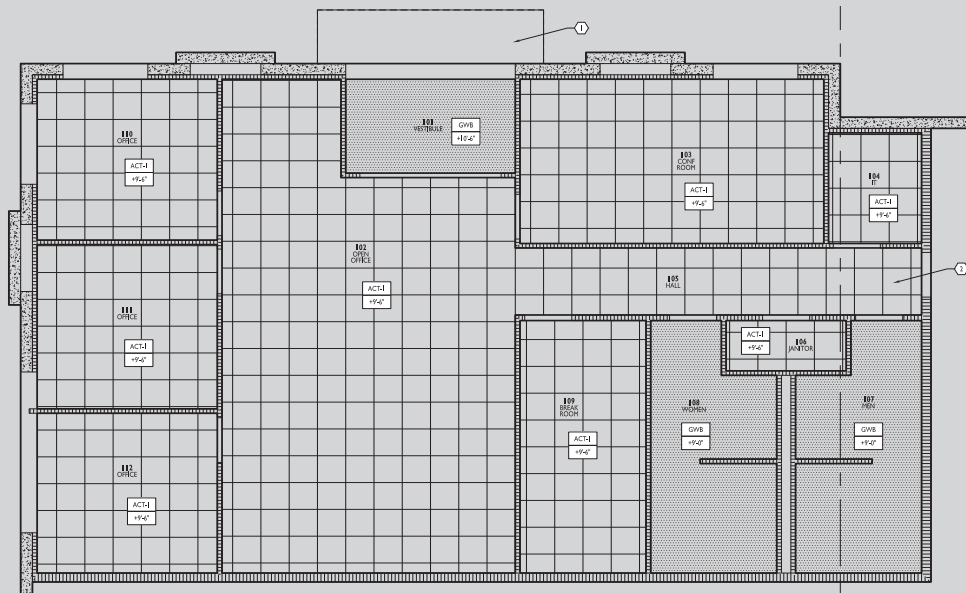
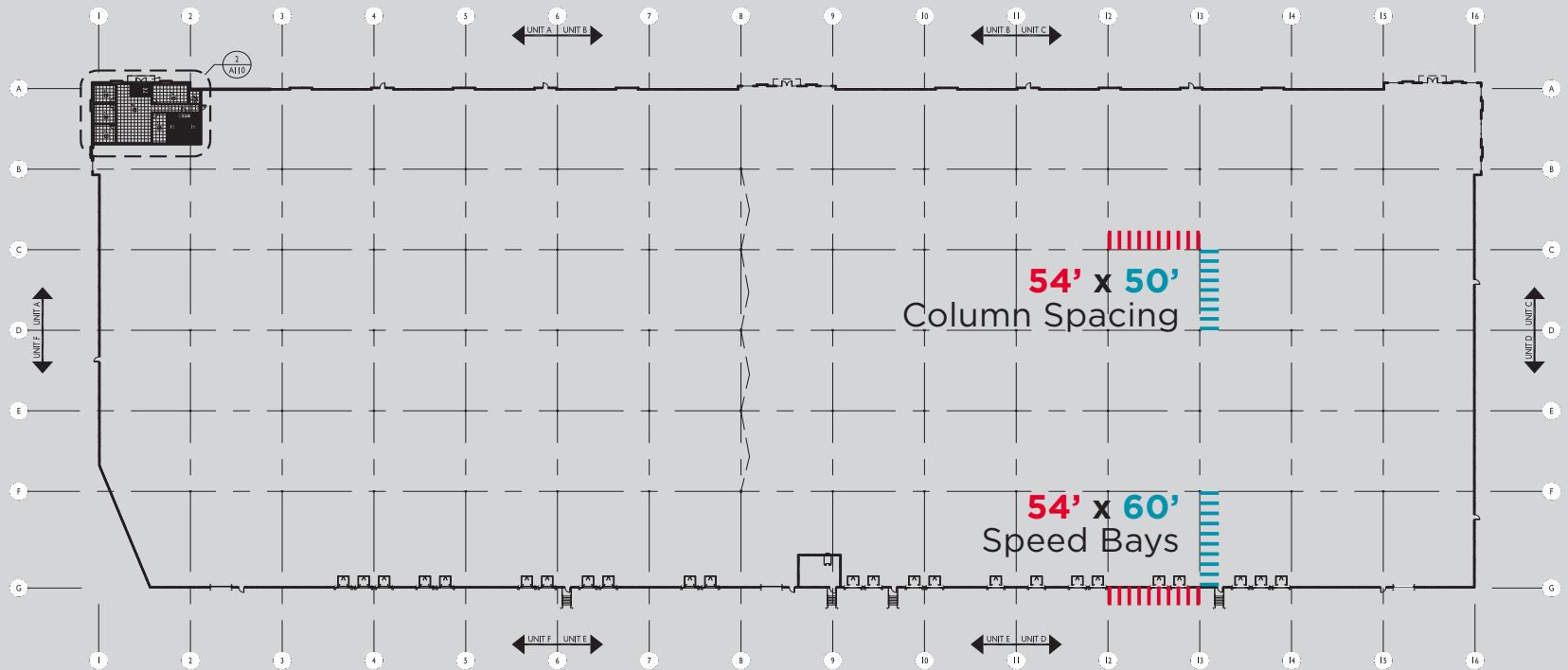
251,150 SF

THOUGHTFULLY DESIGNED,
this building has been
expertly planned to meet an
occupier's needs.

- Located in River Ridge Commerce Center, the premier business park in the region
- Dedicated truck entrance with full ingress/egress



FLOOR PLAN



FULL BUILDING
251,150 SF

OFFICE AREA
2,000 SF

AERIAL MAP



20.9 MILES TO UPS
WORLDPORT/SDF



2.8 MILES TO I-265



7.5 MILES TO I-65



8.2 MILES TO I-71



14.3 MILES TO I-64

For more information, please contact:

Robert B. Walker, CCIM, SIOR

Senior Director

+1 502 719 3254

rwalker@commercialkentucky.com

Jake F. Mills, SIOR

Senior Associate

+1 502 719 3252

jmills@commercialkentucky.com

333 East Main Street, Suite 510

Louisville, KY 40202

Direct +1 589 5150

commercialkentucky.com

©2026 Cushman & Wakefield. All rights reserved. The information contained in this communication is strictly confidential.

This information has been obtained from sources believed to be reliable but has not been verified. NO WARRANTY OR REPRESENTATION, EXPRESS OR IMPLIED, IS MADE AS TO THE CONDITION OF THE PROPERTY (OR PROPERTIES) REFERENCED HEREIN OR AS TO THE ACCURACY OR COMPLETENESS OF THE INFORMATION CONTAINED HEREIN, AND SAME IS SUBMITTED SUBJECT TO ERRORS, OMISSIONS, CHANGE OF PRICE, RENTAL OR OTHER CONDITIONS, WITHDRAWAL WITHOUT NOTICE, AND TO ANY SPECIAL LISTING CONDITIONS IMPOSED BY THE PROPERTY OWNER(S). ANY PROJECTIONS, OPINIONS OR ESTIMATES ARE SUBJECT TO UNCERTAINTY AND DO NOT SIGNIFY CURRENT OR FUTURE PROPERTY PERFORMANCE. Independently owned & operated / A member of the Cushman & Wakefield Commercial Alliance.