

THE LARCHMONT VETERINARIAN BUILDING

428 N. Larchmont Blvd, Los Angeles, CA 90004



Move-In Ready Single Tenant
Vet Building For Lease
On Prime Larchmont Blvd



COMMERCIAL
ASSET GROUP

PROPERTY INFO

SPACE SIZE

±1,436 SQFT

RENTAL RATE

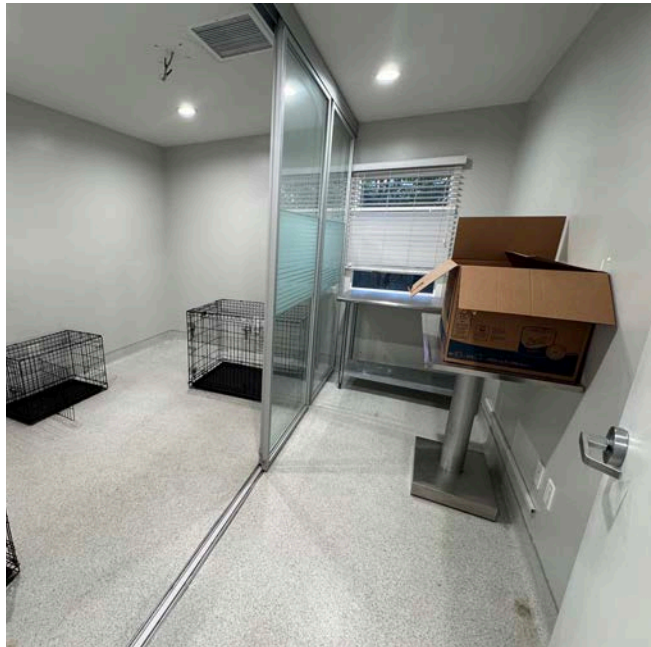
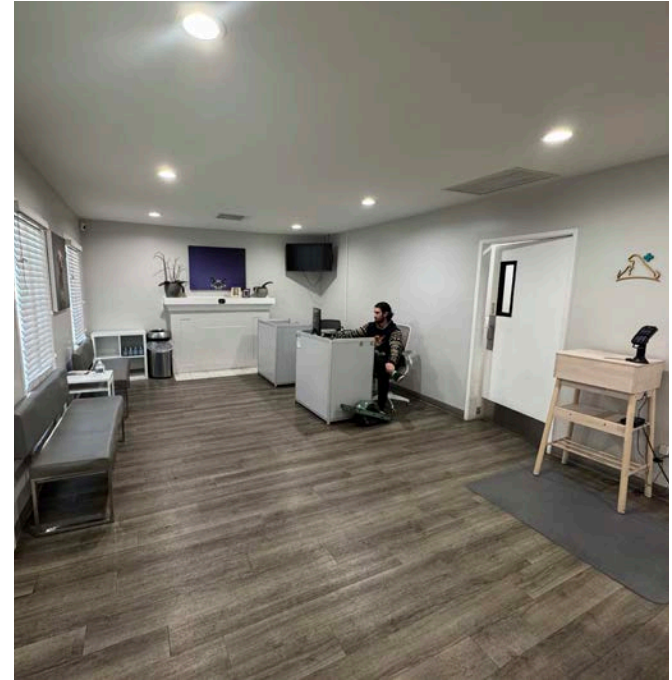
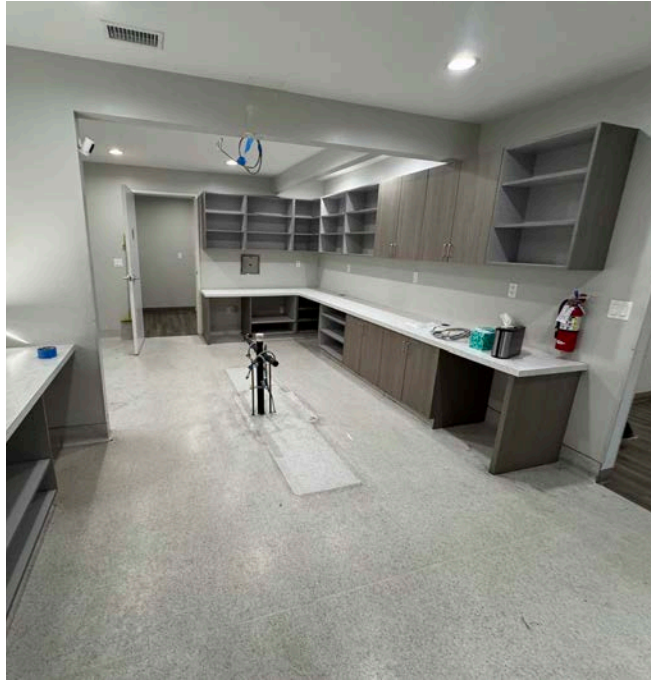
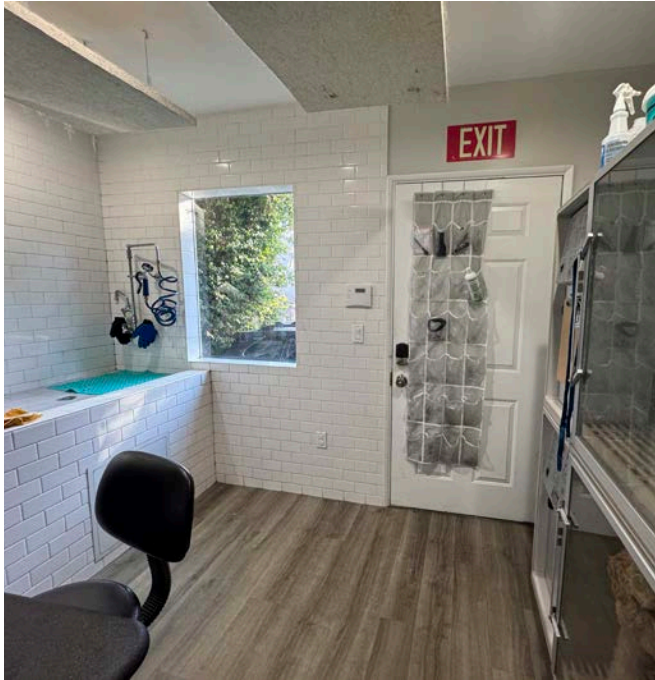
\$5.50 PSF/MO + NNN
(NNN = ±\$0.68 PSF/MO)

- Turnkey veterinarian building for lease on Larchmont Blvd
- Plenty of onsite parking including in the front & rear of building
- Larchmont/Hancock Park provides an exceptional customer base to build a vet practice
- Previous vet moved down the street in a building she was able to purchase based on her success. Only other vet on the street recently retired allowing a new operator to fill the gap
- Other non-vet uses also acceptable

428 N. Larchmont Blvd, Los Angeles, CA 90004

INTERIOR PHOTOS

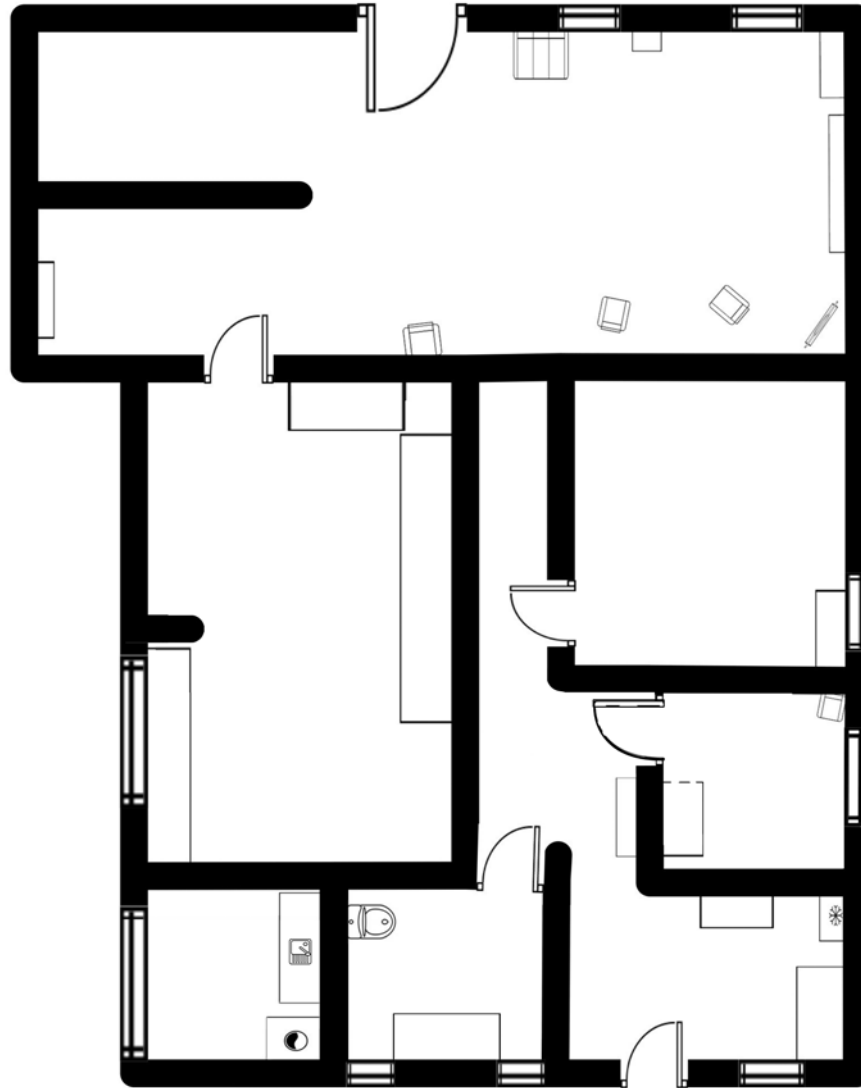
[CLICK FOR
PROPERTY VIDEO](#)



428 N. Larchmont Blvd, Los Angeles, CA 90004

FLOOR PLAN

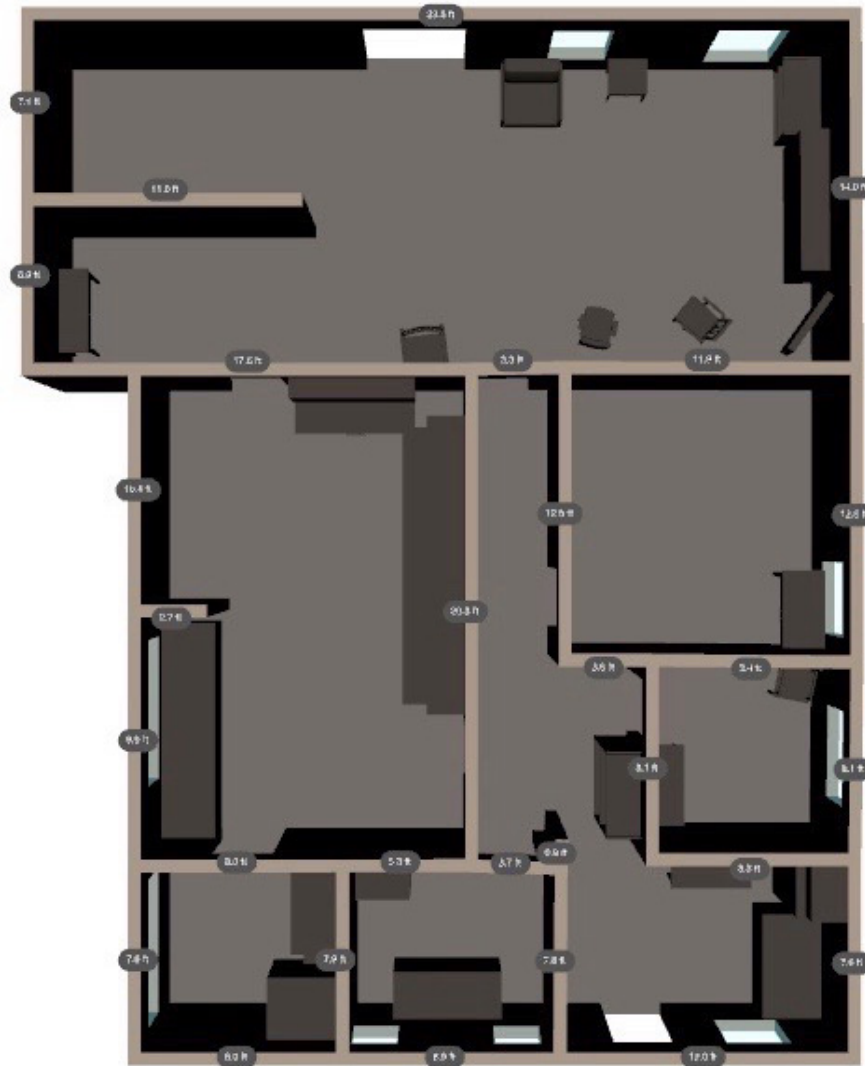
LARCHMONT BLVD



428 N. Larchmont Blvd, Los Angeles, CA 90004

3D FLOOR PLAN

LARCHMONT BLVD



428 N. Larchmont Blvd, Los Angeles, CA 90004

AERIAL



428 N. Larchmont Blvd, Los Angeles, CA 90004



DAVID ASCHKENASY
EXECUTIVE VICE PRESIDENT
P: 310.272.7381
E: DAVIDA@CAGRE.COM
LIC. 01714442

DAVID ICKOVICS
PRINCIPAL
P: 310.272.7380
E: DJI@CAGRE.COM
LIC. 01315424

COMMERCIAL ASSET GROUP
190 N. CANON DRIVE, STE 300
BEVERLY HILLS, CA 90210
P: 310.275.8222 F: 310.275.8223
CAGRE.COM LIC: 01876070



**COMMERCIAL
ASSET GROUP**

These materials are based on information and content provided by others, which we believe are accurate. No guarantee, warranty or representation is made by Commercial Asset Group, Inc. or its personnel. All interested parties must independently verify accuracy and completeness. As well, any projections, assumptions, opinion, or estimates are used for example only and do not represent the current or future performance of the identified property. Your tax, financial, legal and toxic substance advisors should conduct a careful investigation of the property and its suitability for your needs, including land use limitations. The property is subject to prior lease, sale, change in price, or withdrawal from the market without notice.