

54.16 ACRES

Being all that certain tract of land lying and being a part of the J.S. Foster Survey, Abstract Number 547, Tarrant County, Texas, and being a part of a tract of land described in a deed to FW 205 Partners, Ltd., recorded in Instrument Number D206119527, Official Public Records, Tarrant County, Texas, and being more particularly described by metes and bounds as follows:

BEGINNING at a capped iron rod found stamped "TNP" in the East line of Chisholm Trail Parkway, being in the South line of a tract of land described as "Tract Two" in a deed to Conglomerate Gas II, LP, recorded in Document Number D210209360, Official Public Records Tarrant County, Texas;

THENCE North 89 Degrees 14 Minutes 54 Seconds East with the South line of said Conglomerate Gas II, LP tract, 876.28 feet to a capped iron rod set stamped "KAZ", being the most Northerly Northeast corner of the herein described tract;

THENCE South 00 Degrees 26 Minutes 40 Seconds East, 987.01 feet to a capped iron rod set stamped "KAZ", being a reentrant for the herein described tract;

THENCE North 89 Degrees 14 Minutes 54 Seconds East, 600.01 feet to a pk nail set in Old Granbury Road, being the most Easterly Northeast corner of the herein described tract;

THENCE South 00 Degrees 26 Minutes 40 Seconds East, 1458.80 feet to a pk nail set in said Road, being the most Easterly Southeast corner of the herein described tract;

THENCE North 89 Degrees 58 Minutes 08 Seconds West, 49.93 feet to a capped iron rod set stamped "KAZ";

THENCE South 00 Degrees 53 Minutes 15 Seconds East, 50.67 feet to a capped iron rod set stamped "KAZ";

THENCE South 29 Degrees 26 Minutes 10 Seconds West, 99.49 feet to a capped iron rod set stamped "KAZ", being the beginning of a non-tangent curve to the right whose long chord bears South 84 Degrees 23 Minutes 44 Seconds West, 144.56 feet; 64

THENCE along said curve having a radius of 11399.16 feet and an arc length of 144.56 feet to an x cut found on a boulder;

THENCE along the centerline of a creek for the following calls:

- North 12 Degrees 17 Minutes 28 Seconds East, 5.65 feet to a point;
- North 20 Degrees 41 Minutes 25 Seconds West, 22.54 feet to a point;
- North 36 Degrees 19 Minutes 42 Seconds West, 37.05 feet to a point;
- North 04 Degrees 24 Minutes 43 Seconds East, 14.33 feet to a point;
- North 76 Degrees 19 Minutes 50 Seconds East, 11.83 feet to a point;
- North 06 Degrees 17 Minutes 52 Seconds West, 59.53 feet to a point;
- North 41 Degrees 25 Minutes 45 Seconds West, 80.39 feet to a point;
- North 42 Degrees 35 Minutes 16 Seconds West, 51.39 feet to a point;
- North 31 Degrees 38 Minutes 04 Seconds West, 38.99 feet to a point;
- North 41 Degrees 00 Minutes 15 Seconds East, 12.49 feet to a point;
- North 47 Degrees 52 Minutes 37 Seconds West, 62.44 feet to a point;
- North 63 Degrees 53 Minutes 00 Seconds West, 65.47 feet to a point;
- North 83 Degrees 14 Minutes 53 Seconds West, 66.05 feet to a point;
- North 77 Degrees 37 Minutes 39 Seconds West, 108.77 feet to a point;
- North 62 Degrees 21 Minutes 24 Seconds West, 40.07 feet to a point;
- North 46 Degrees 56 Minutes 19 Seconds West, 15.16 feet to a point;
- North 06 Degrees 28 Minutes 35 Seconds West, 37.56 feet to a point;
- North 19 Degrees 58 Minutes 51 Seconds East, 31.81 feet to a point;
- North 43 Degrees 11 Minutes 17 Seconds East, 62.40 feet to a point;
- North 72 Degrees 54 Minutes 44 Seconds East, 55.39 feet to a point;
- North 47 Degrees 02 Minutes 33 Seconds East, 24.88 feet to a point;
- North 54 Degrees 43 Minutes 36 Seconds East, 20.72 feet to a point;
- North 11 Degrees 42 Minutes 17 Seconds East, 35.81 feet to a point;
- North 27 Degrees 50 Minutes 38 Seconds East, 50.70 feet to a point;
- North 14 Degrees 12 Minutes 51 Seconds East, 43.03 feet to a point;
- North 40 Degrees 56 Minutes 55 Seconds West, 71.33 feet to a point;
- North 60 Degrees 13 Minutes 20 Seconds West, 42.16 feet to a point;
- North 39 Degrees 12 Minutes 22 Seconds West, 44.23 feet to a point;
- North 86 Degrees 40 Minutes 04 Seconds West, 123.50 feet to a point;
- South 79 Degrees 41 Minutes 52 Seconds West, 57.87 feet to a point;
- North 78 Degrees 52 Minutes 11 Seconds West, 47.51 feet to a point;
- South 88 Degrees 43 Minutes 43 Seconds West, 80.86 feet to a point;
- South 82 Degrees 11 Minutes 13 Seconds West, 46.67 feet to a point;
- South 66 Degrees 31 Minutes 34 Seconds West, 50.34 feet to a point;
- South 51 Degrees 59 Minutes 29 Seconds West, 65.09 feet to a point;
- South 60 Degrees 20 Minutes 55 Seconds West, 56.51 feet to a point;
- South 67 Degrees 06 Minutes 14 Seconds West, 56.73 feet to a point;
- South 74 Degrees 17 Minutes 07 Seconds West, 39.06 feet to a point;
- North 80 Degrees 47 Minutes 35 Seconds West, 75.30 feet to a capped iron rod found stamped "TNP" in the East Right-of-Way line of Chisholm Trail Parkway, being the most Westerly Southwest corner of the herein described tract;

THENCE North 19 Degrees 52 Minutes 30 Seconds West with said East line, 123.13 feet to a capped iron rod found stamped "TNP";

THENCE North 10 Degrees 11 Minutes 08 Seconds West with said East line, 653.70 feet to a Texas Department of Transportation Monument found;

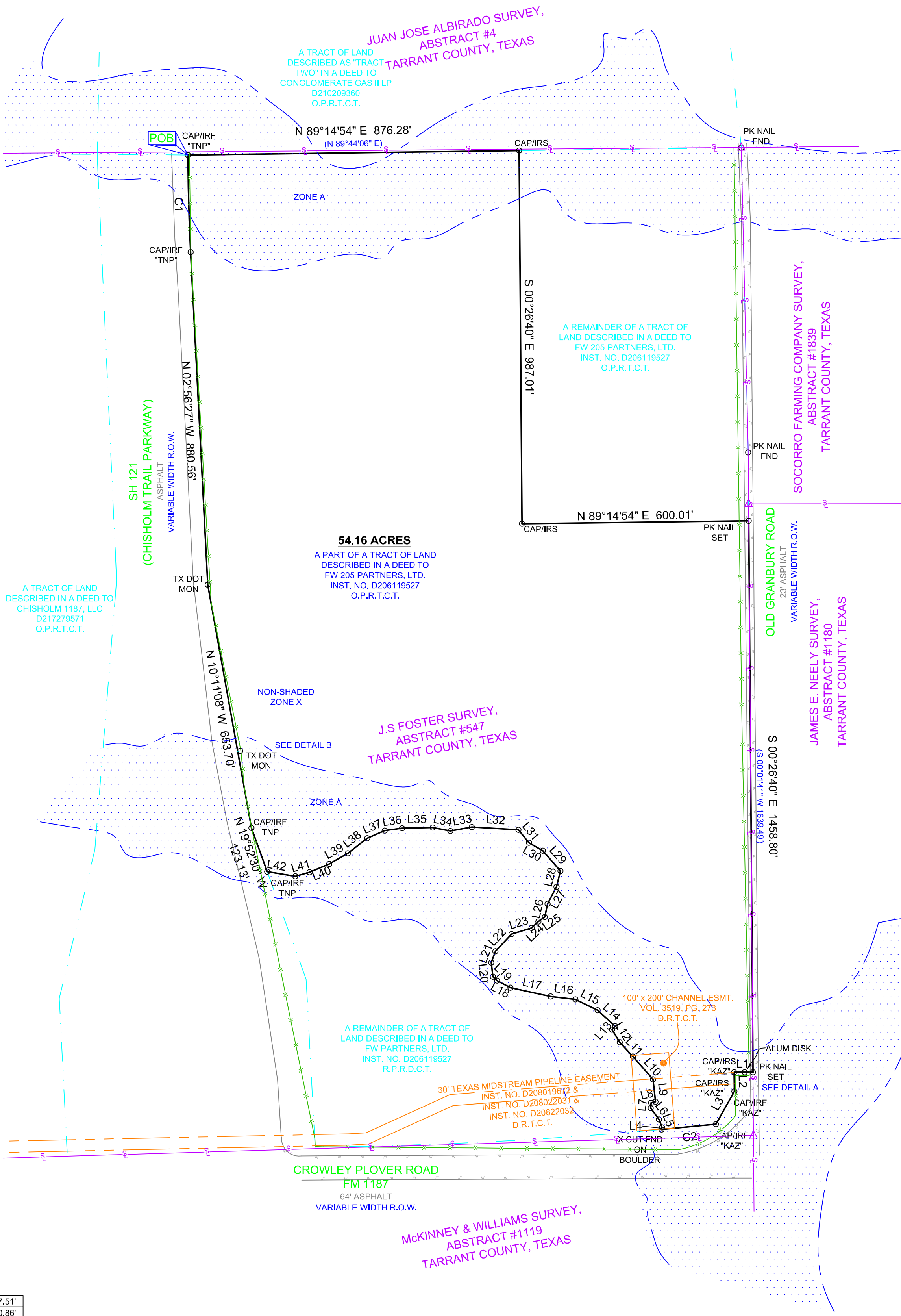
THENCE North 02 Degrees 56 Minutes 27 Seconds West with said East line, 880.56 feet to a capped iron rod found stamped "TNP", being the beginning of a non-tangent curve to the right whose long chord bears North 01 Degree 35 Minutes 29 Seconds West, 257.36 feet;

THENCE along said curve having a radius of 5609.58 feet and an arc length of 257.39 feet to the PLACE OF BEGINNING, containing 54.16 acres of land more or less.

FLOOD STATEMENT: I have reviewed the F.E.M.A. Flood Insurance Rate Map for Tarrant County, Community Number 480582 effective date 9-25-2009 and that map indicates as scaled, that a portion of this property is within "Non-Shaded Zone X" defined as "Areas determined to be outside the 0.2% annual chance flood (500-year)" and a portion of this property is within "Shaded Zone A" defined as "Special Flood Hazard Areas subject to inundation by the 1% annual chance flood (100-year); with no base flood elevations determined" as shown on Panel 410 K of said map.

NOTE: This survey correctly represents the results of an on-the-ground survey made under my direction and supervision. There are no visible or apparent intrusions or protrusions except as shown hereon.

NOTE: Bearings shown hereon are referenced to the Texas Coordinate System of 1983, North Central Zone (4202), and are based on the North American Datum of 1983, 2011 Adjustment.

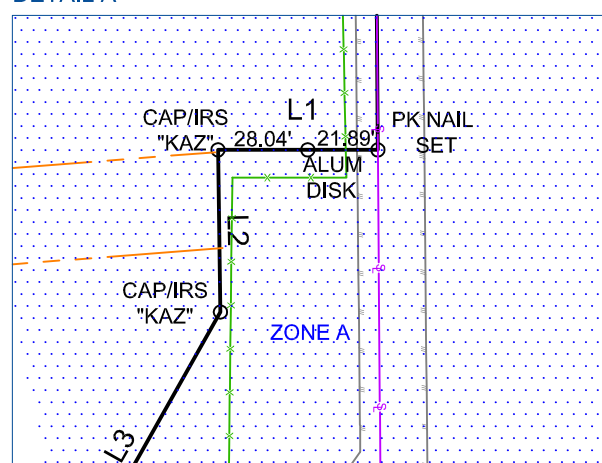


LINE	BEARING	DISTANCE
L1	N 89°58'08" W	49.93'
L2	S 00°53'15" E	50.67'
L3	S 29°26'10" W	99.49'
L4	N 12°17'28" E	5.65'
L5	N 20°41'25" W	22.54'
L6	N 36°19'42" W	37.05'
L7	N 04°24'43" E	14.33'
L8	N 76°19'50" E	11.83'
L9	N 06°17'52" W	59.53'
L10	N 41°25'45" W	80.39'
L11	N 42°35'16" W	51.39'
L12	N 31°38'04" W	38.99'
L13	N 41°00'15" E	12.49'
L14	N 47°52'37" W	62.44'
L15	N 63°53'00" W	65.47'
L16	N 83°14'53" W	66.05'
L17	N 77°37'39" W	108.77'
L18	N 62°21'24" W	40.07'
L19	N 46°56'19" W	15.16'
L20	N 06°28'35" W	37.56'
L21	N 19°58'51" E	31.81'
L22	N 43°11'17" E	62.40'
L23	N 72°54'44" E	55.39'
L24	N 47°02'33" E	24.88'
L25	N 54°43'36" E	20.72'
L26	N 11°42'17" E	35.81'
L27	N 27°50'38" E	50.70'
L28	N 14°12'51" E	43.03'
L29	N 40°56'55" W	71.33'
L30	N 60°13'20" W	42.16'
L31	N 39°12'22" W	44.23'
L32	N 86°40'04" W	123.50'
L33	S 79°41'52" W	57.87'

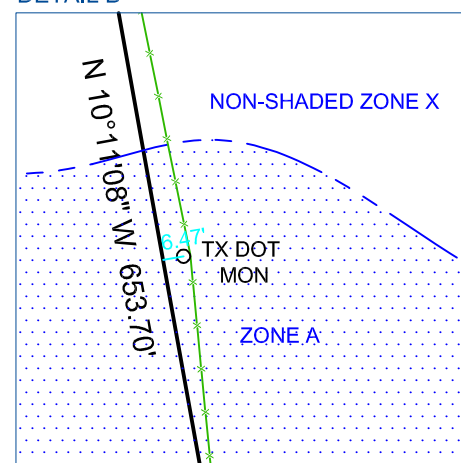
L34	N 78°52'11" W	47.51'
L35	S 88°43'43" W	80.86'
L36	S 82°11'13" W	46.67'
L37	S 66°31'34" W	50.34'
L38	S 51°59'29" W	65.09'
L39	S 60°20'55" W	56.51'
L40	S 67°06'14" W	56.73'
L41	S 74°17'07" W	39.06'
L42	N 80°47'35" W	75.30'

CURVE	RADIUS	ARC LENGTH	CHORD LENGTH	CHORD BEARING	DELTA ANGLE
C1	5609.58'	257.39'	257.36'	N 01°35'29" W	2°37'44"
C2	11399.16'	144.56'	144.56'	S 84°23'44" W	0°43'36"

DETAIL A

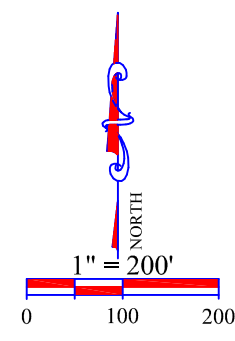


DETAIL B



LEGEND

- D.R.T.C.T. = DEED RECORDS TARRANT COUNTY TEXAS
- IRF = IRON ROD FOUND
- CAP/IRF = CAPPED IRON ROD FOUND
- () = PLAT OR DEED CALL
- = SURVEY LINE
- x— = WIRE FENCE
- #— = ASPHALT
- = CONCRETE



KAZ SURVEYING
TX FIRM REGISTRATION # 10002100

1720 WESTMINSTER
DENTON, TX 76205
(940)382-3446
JOB NUMBER: 180960-02
DRAWN BY: MBC
DATE: 12-17-2018
R.P.L.S.
KENNETH A. ZOLLINGER