

# CORNERSTONE PLAZA



**MID-AMERICA**<sup>®</sup>  
Real Estate-Michigan, Inc.

23647-23881 Greenfield Road / Southfield, MI

**AVAILABLE NOW**



RETAIL OPPORTUNITY

# CORNERSTONE PLAZA



## Address

23647-23881 Greenfield Road  
Southfield, MI 48075

## Availability

### Inline:

- 1,800 SF
- 4,000 SF (Former Restaurant)
- 4,000 SF

### Outlots:

- 1,800-5,000 SF

## Features

Redevelopment is now complete with the addition of Burlington, Ross and Five Below. This 127,710 SF neighborhood, power center now boasts a very strong soft good line up, driving traffic and creating an enhanced tenant mix. In addition to a new, national tenant line up, there are two out lots available for lease, including a drive-thru opportunity.

Cornerstone Plaza is situated just north of Providence Hospital, a 459-bed healthcare facility with approximately 2,900 employees. The property is also located in close proximity to the new Northland City Center redevelopment, a \$403M development with 1,500 residential units and additional commercial space.

## Co-Tenants

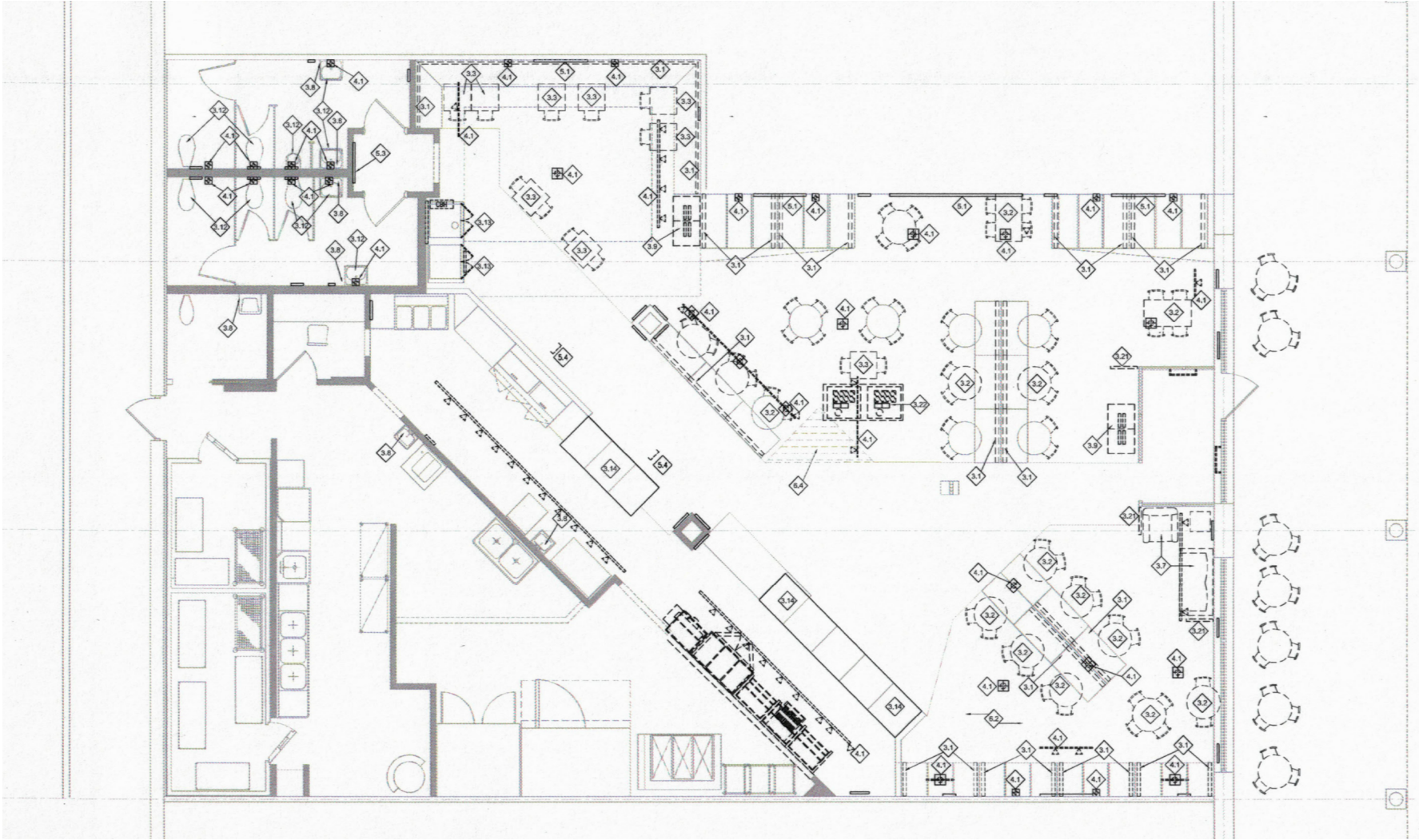


## Demographics (2025)

	1 MILE	3 MILES	5 MILES
POPULATION	19,716	132,367	364,489
HOUSEHOLDS	8,848	56,766	163,085
AVG HOUSEHOLD INCOME	\$73,779	\$94,562	\$95,531
DAYTIME POPULATION	20,606	135,195	364,649



# CORNERSTONE PLAZA



TURNKEY RESTAURANT

# CORNERSTONE PLAZA





# CORNERSTONE PLAZA



Brooke  
Wolf

Mid-America Real Estate -  
Michigan, Inc.

T: 248.855.6800

[BWolf@MidAmericaGrp.com](mailto:BWolf@MidAmericaGrp.com)

Eric  
Unatin

Mid-America Real Estate -  
Michigan, Inc.

T: 248.855.6800

[EUnatin@MidAmericaGrp.com](mailto:EUnatin@MidAmericaGrp.com)



38500 Woodward Ave, Suite 100  
Bloomfield Hills, Michigan 48304  
248.855.6800

[MidAmericaGrp.com](http://MidAmericaGrp.com)

CONTACT