



**2300 ARBROOK BLVD  
ARLINGTON, TX 76014**

## Property Highlights

- Total Available Area: 18,000 SF
- Sublease Term: April 30, 2028
- Clear Height: 32'
- Truck Court: 120'
- ESFR
- 4 Dock High Doors
- 1 Ramp

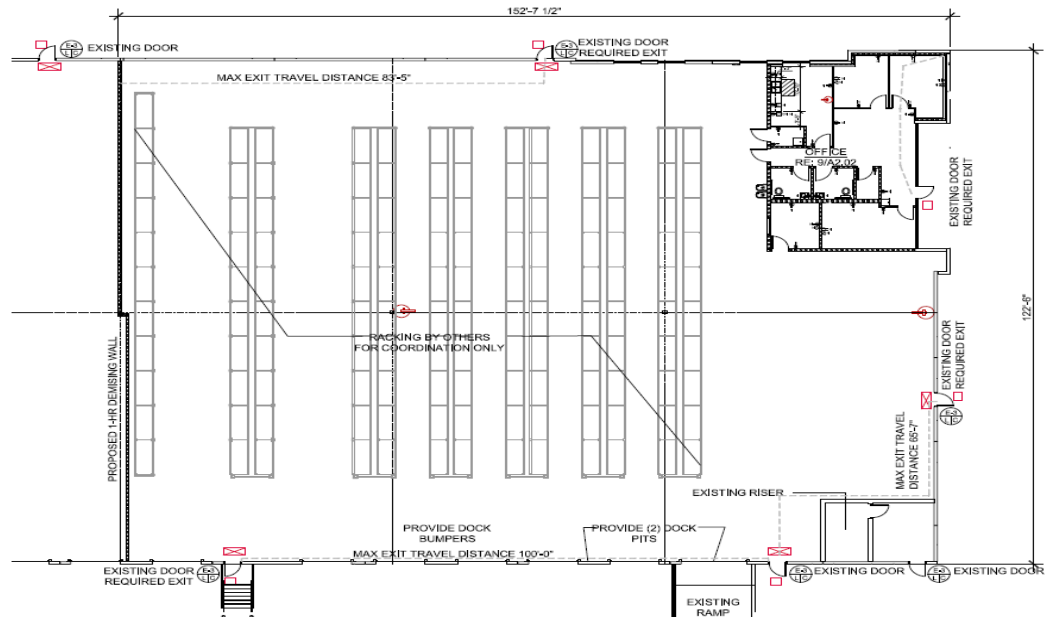
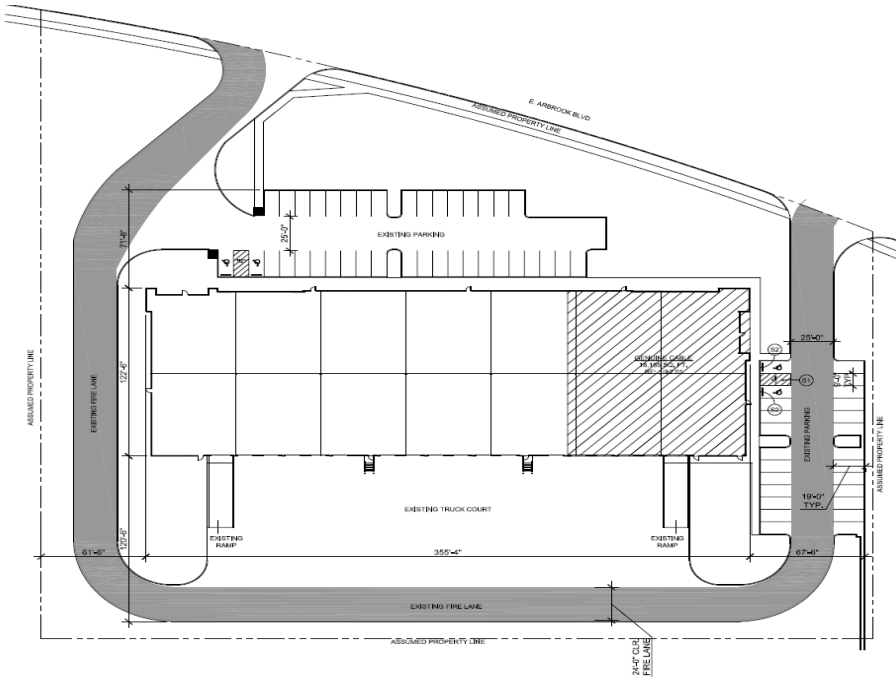
For more information, please contact:

**CLAY BALCH, SIOR**  
Executive Director  
+1 972 663 9853  
clay.balch@cushwake.com

**JAKE GRIFFIN**  
Senior Associate  
+1 972 663 9609  
jake.griffin@cushwake.com



FLOORPLAN



For more information, please contact:

**CLAY BALCH, SIOR**  
Executive Director  
+1 972 663 9853  
clay.balch@cushwake.com

**JAKE GRIFFIN**  
Senior Associate  
+1 972 663 9609  
jake.griffin@cushwake.com

