

FOR LEASE

1900 BATES AVENUE | SUITES A-D

Concord | CA 94502

±6,135 SF

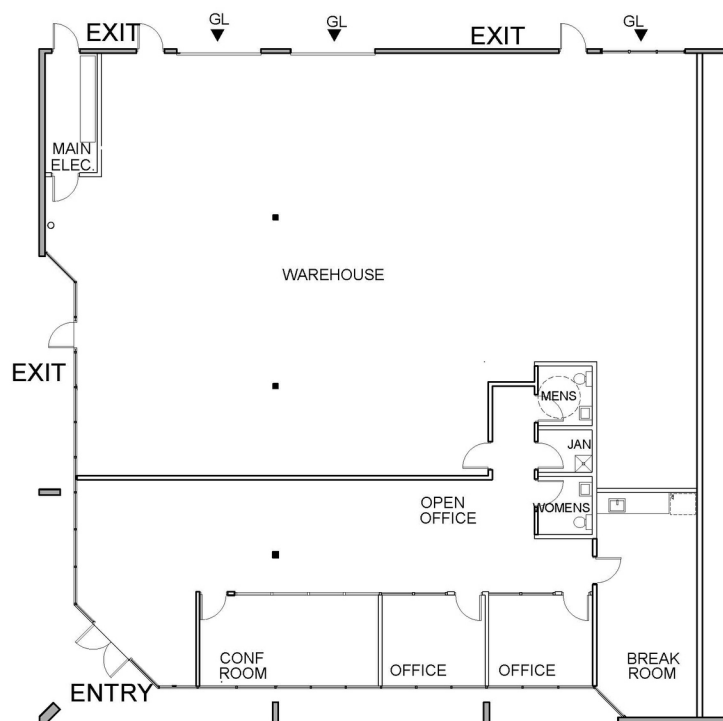
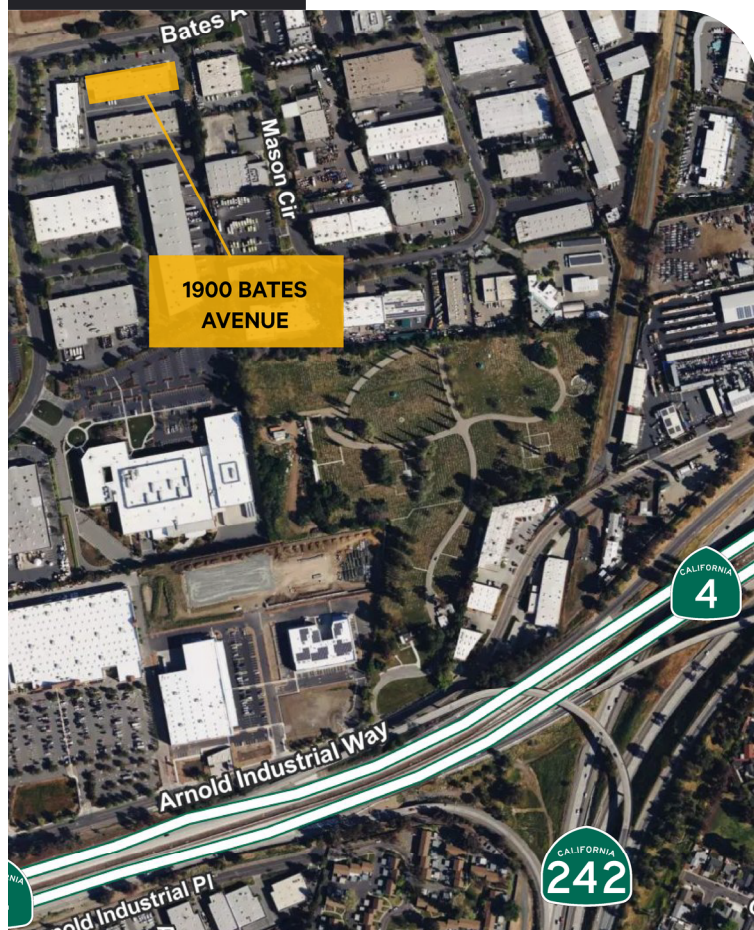


CONTACT US

Tony Binswanger, SIOR
Bo Harkins

+1 925 296 7728 | tony.binswanger@cbre.com
+1 925 296 7727 | bo.harkins@cbre.com

CBRE

SITE PLAN**PROPERTY HIGHLIGHTS**

- ±6,135 SF
- ±70% Warehouse / ±30% Office
- Reception
- Two (2) Private Offices
- Conference Room
- Breakroom
- Two (2) Restrooms
- Three (3) Grade Level Doors
- ±16-18' Clear Height
- Close proximity to Hwy 4 & 680
- Call brokers for pricing

CONTACT:

Tony Binswanger, SIOR
Executive Vice President
+1 925 296 7728
tony.binswanger@cbre.com
Lic. 01861701

Bo Harkins
First Vice President
+1 925 296 7727
bo.harkins@cbre.com
Lic. 01943785

CBRE, Inc
2175 N California Blvd
Suite 300
Walnut Creek, CA 94596
www.cbre.com/walnutcreek
Lic. 00409987