

# FOR LEASE | REGENTS PARK III

16850 Saturn Lane, Houston, TX 77058



## Offering Summary

Lease Rate:	\$11.00 SF/yr (NNN)
Building Size:	20,174 SF
Available SF:	1,403 - 10,814 SF
Lot Size:	2.68 Acres
Number of Units:	3
Year Built:	1985
Renovated:	2000

## Property Overview

Beautiful office space ready for immediate delivery. Convenient to Clear Lake, League City, Webster, this quiet professional office building boasts a recent renovation and great rental rates. Suites from 1000SF 9,000SF. Generous Tenant Improvements and allowances available depending on client and term!

Call or Text Jason at today 832-956-0547 or 763-498-1941

## Property Highlights

- Nice office quiet office space in the Clear Lake/Webster/Houston area.
- Large windows provide natural light
- Aggressive TI and build out terms available

## Jason Suchecki

832.956.0547

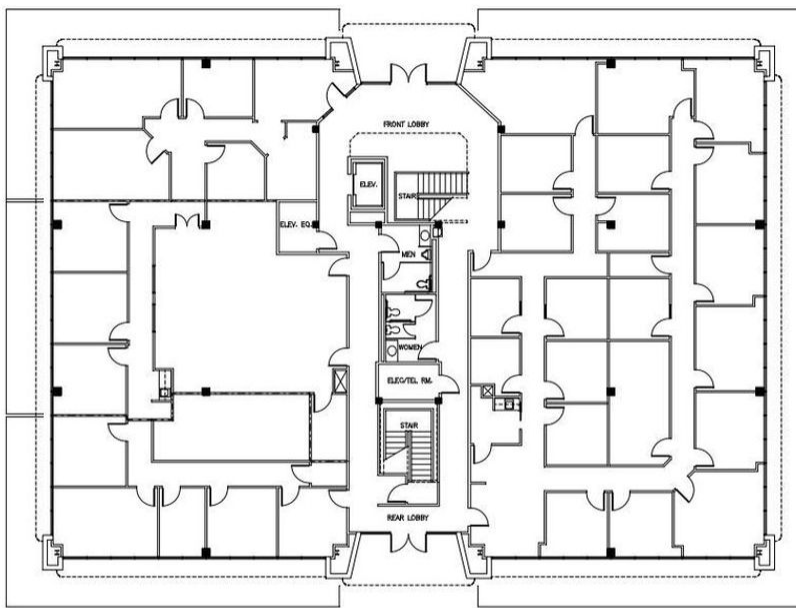
jason.suchecki@expcommercial.com



eXp Commercial, LLC, its direct and indirect parents and their subsidiaries (together, "We") obtained the information above from sources believed to be reliable, however, We have not verified its accuracy and make no guarantee, warranty or representation, expressed or implied, about such information. The information contained above is submitted subject to the possibility of errors, omissions, price changes, rental or other conditions, prior sale, lease or financing, or withdrawal without notice. Any projections, opinions, assumptions or estimates of the information contained above or provided in connection therewith, either expressed or implied, are for example only, and they may not represent current or future performance of the subject property. You, together with your tax and legal advisors, should conduct your own thorough investigation of the subject property and potential investment.

# FOR LEASE | REGENTS PARK III

16850 Saturn Lane, Houston, TX 77058

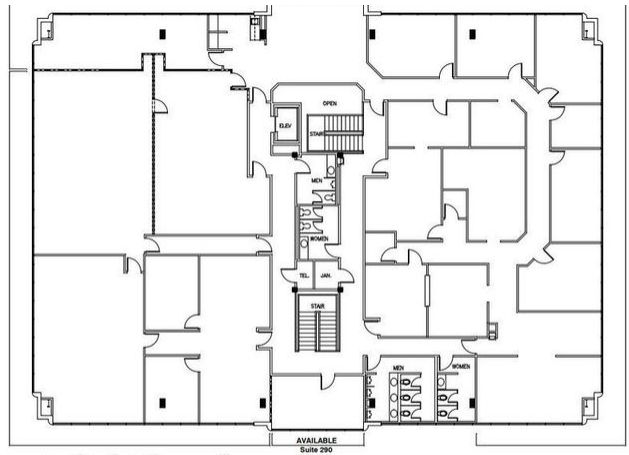


**FIRST FLOOR PLAN**  
Areas shown are calculated per floor plan.

Scale: 1/16" = 1'-0" 2/26/16

**REGENTS PARK III**  
Houston, Texas  
**SATURN VENTURE, LLC**  
**DAVID BOGGESS ARCHITECTS**  
27002 AB, 195-1 PROPLER

This document is for information only and may not be used for regulatory approval, permit or construction. David Bogges Reg. # 8894



**SECOND FLOOR PLAN**  
Areas shown are calculated per plan.

Scale: 1/16" = 1'-0" 11/01/2018

**REGENTS PARK III**  
Houston, Texas  
**SATURN VENTURE, LLC**

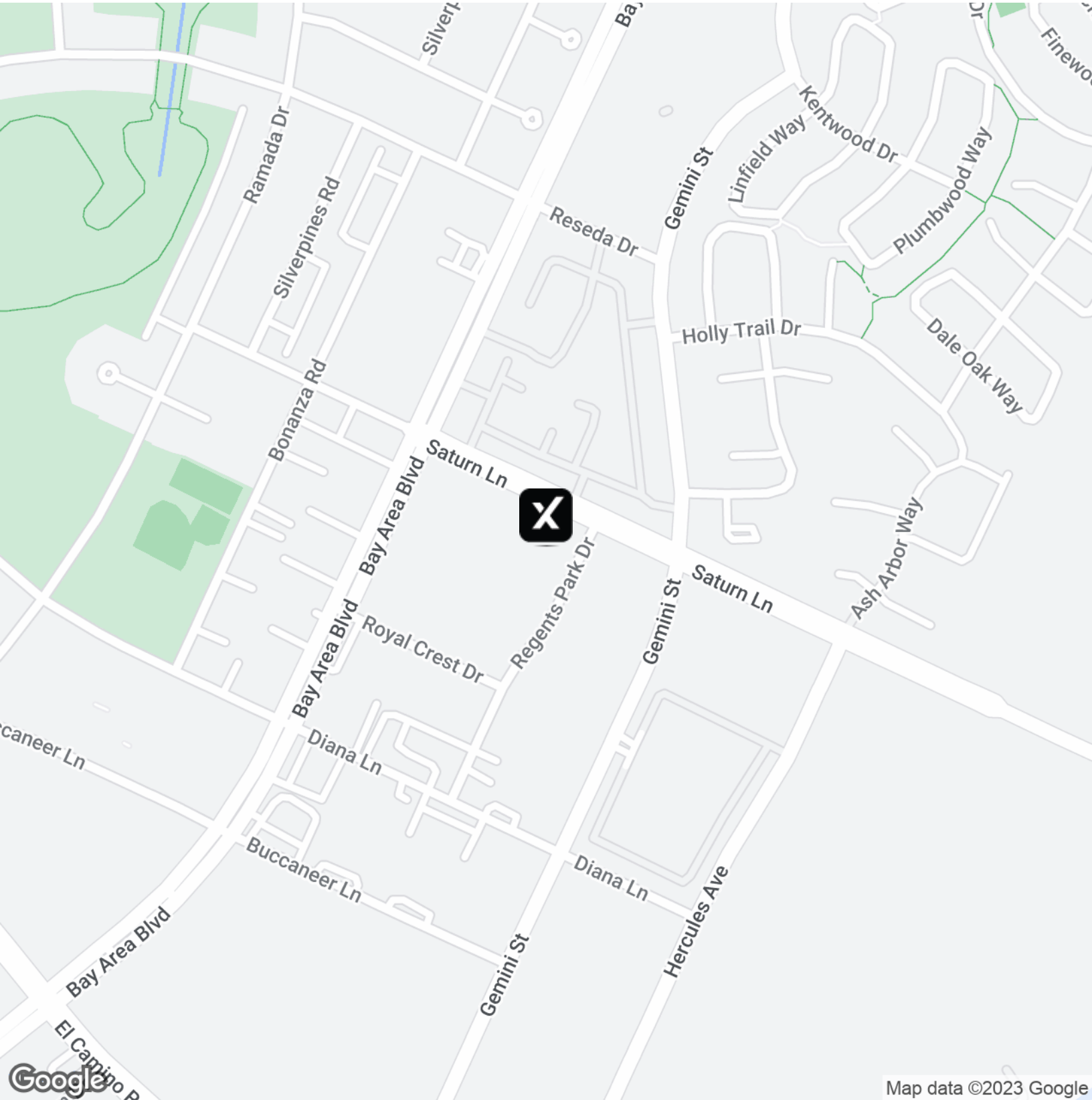
**Jason Suchecki**  
832.956.0547  
jason.suchecki@expcommercial.com



eXp Commercial, LLC, its direct and indirect parents and their subsidiaries (together, "We") obtained the information above from sources believed to be reliable, however, We have not verified its accuracy and make no guarantee, warranty or representation, expressed or implied, about such information. The information contained above is submitted subject to the possibility of errors, omissions, price changes, rental or other conditions, prior sale, lease or financing, or withdrawal without notice. Any projections, opinions, assumptions or estimates of the information contained above or provided in connection therewith, either expressed or implied, are for example only, and they may not represent current or future performance of the subject property. You, together with your tax and legal advisors, should conduct your own thorough investigation of the subject property and potential investment.

# FOR LEASE | REGENTS PARK III

16850 Saturn Lane, Houston, TX 77058



Map data ©2023 Google

**Jason Suchecki**

832.956.0547

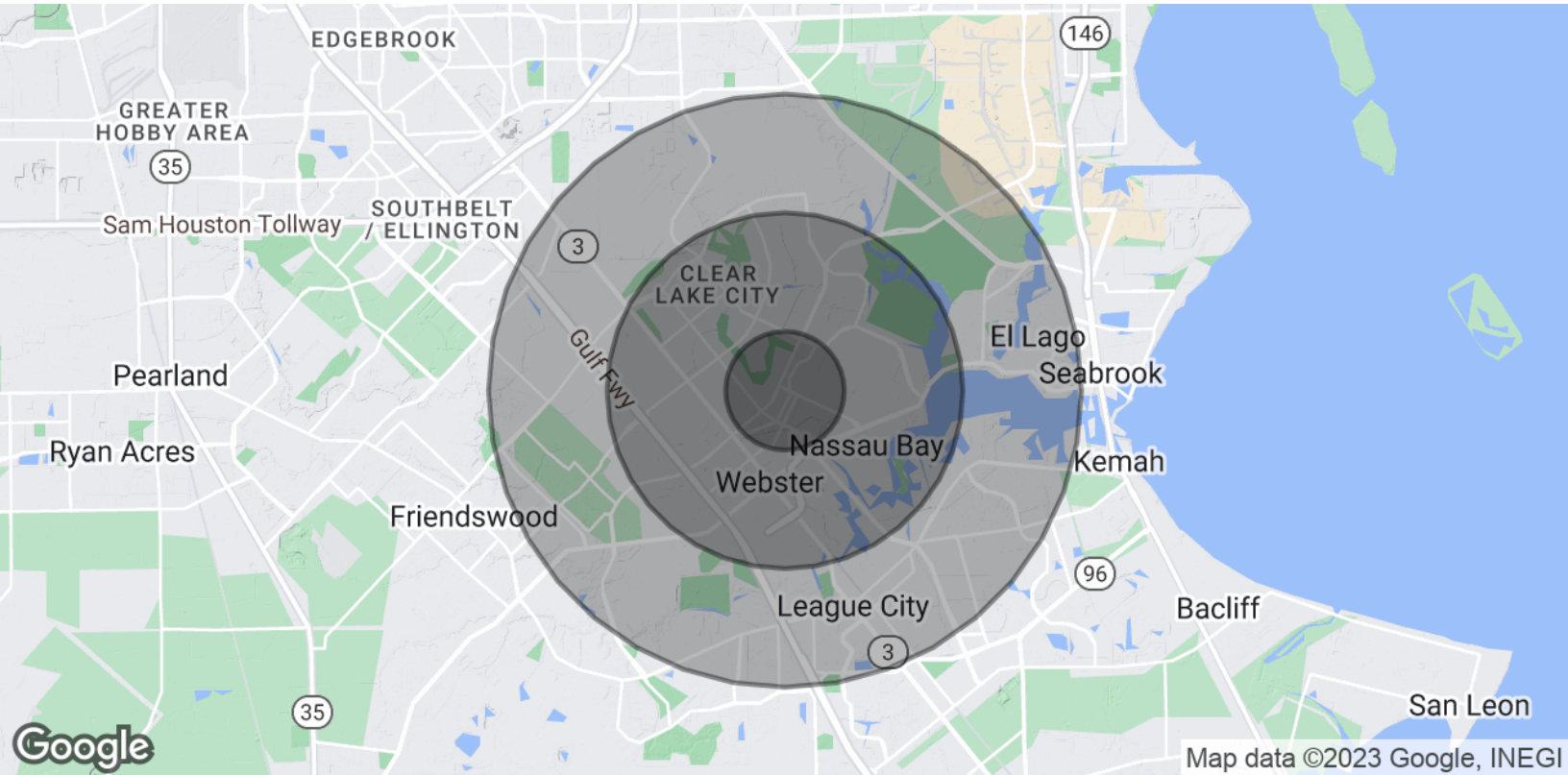
[jason.suchecki@expcommercial.com](mailto:jason.suchecki@expcommercial.com)



eXp Commercial, LLC, its direct and indirect parents and their subsidiaries (together, "We") obtained the information above from sources believed to be reliable, however, We have not verified its accuracy and make no guarantee, warranty or representation, expressed or implied, about such information. The information contained above is submitted subject to the possibility of errors, omissions, price changes, rental or other conditions, prior sale, lease or financing, or withdrawal without notice. Any projections, opinions, assumptions or estimates of the information contained above or provided in connection therewith, either expressed or implied, are for example only, and they may not represent current or future performance of the subject property. You, together with your tax and legal advisors, should conduct your own thorough investigation of the subject property and potential investment.

# FOR LEASE | REGENTS PARK III

16850 Saturn Lane, Houston, TX 77058



Population	1 Mile	3 Miles	5 Miles
Total Population	11,354	76,638	150,017
Average Age	35.0	37.2	36.3
Average Age (Male)	36.6	37.1	35.9
Average Age (Female)	34.3	38.1	37.1
Households & Income	1 Mile	3 Miles	5 Miles
Total Households	5,252	32,022	59,309
# of Persons per HH	2.2	2.4	2.5
Average HH Income	\$63,124	\$86,724	\$91,790
Average House Value	\$134,386	\$155,905	\$201,625

\* Demographic data derived from 2020 ACS - US Census

**Jason Suchecki**  
 832.956.0547  
 jason.suchecki@expcommercial.com



eXp Commercial, LLC, its direct and indirect parents and their subsidiaries (together, "We") obtained the information above from sources believed to be reliable, however, We have not verified its accuracy and make no guarantee, warranty or representation, expressed or implied, about such information. The information contained above is submitted subject to the possibility of errors, omissions, price changes, rental or other conditions, prior sale, lease or financing, or withdrawal without notice. Any projections, opinions, assumptions or estimates of the information contained above or provided in connection therewith, either expressed or implied, are for example only, and they may not represent current or future performance of the subject property. You, together with your tax and legal advisors, should conduct your own thorough investigation of the subject property and potential investment.