

# FOR SALE

240-250 Enterprise St., Russell, ON



Multi-Tenant Industrial Building. The building has a gross area of 33,310 sq.ft. with a leasable area of approximately 31,786 sq.ft. The building is situated on 4.14 acres of land.

**PHILIP ZUNDER** President | Broker of Record  
613.725.7170 | [pzunder@cdnglobal.com](mailto:pzunder@cdnglobal.com)

**JOEL FREEDMAN** | Broker  
819.360.7108 | [jfreedman@cdnglobal.com](mailto:jfreedman@cdnglobal.com)

**CDN GLOBAL (OTTAWA) LTD.**  
1419 Carling Avenue, Suite 203 | Ottawa, ON | K1Z 7L6  
[www.cdnglobal.com](http://www.cdnglobal.com)

**CDNGLOBAL<sup>®</sup>**  
Commercial Real Estate Advisors

---

# PROPERTY DETAILS

---



## THE OFFERING

240-250 Enterprise St., Russell, Ontario is a multi-tenanted industrial building located in the Vars Industrial Park. The building consists of approximately 33,310 sq.ft. of gross building area on 4.14 acres (more or less) of land. The front of the building has storefront type windows while the rear of the property has 11 overhead doors. The building has good access for large vehicles and transport trucks. Currently there are five (5) tenants in the property with the anchor tenant occupying approximately 14,515 sq.ft. The site has an excess of land of approximately two acres which could accommodate additional structures.

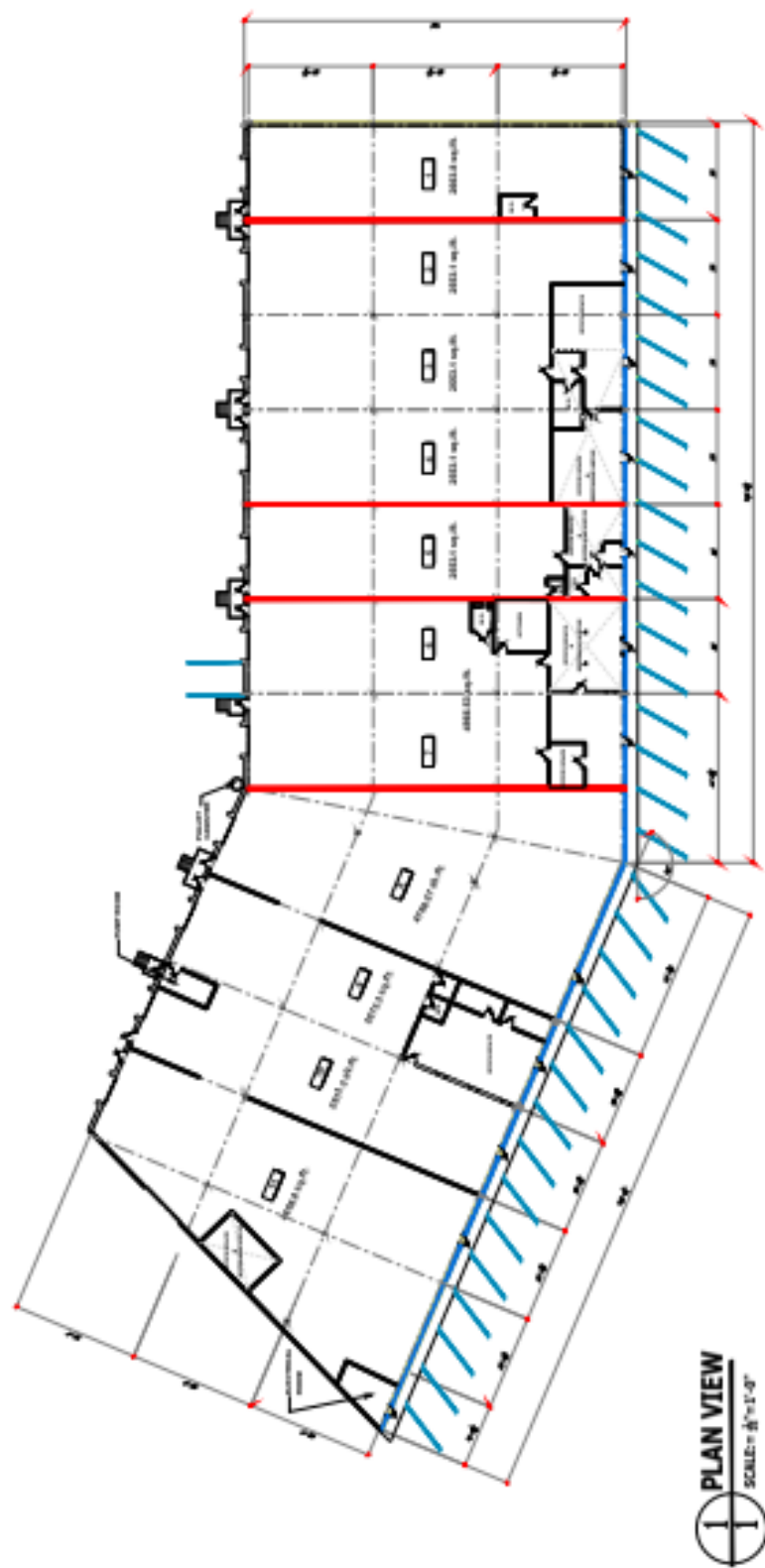
ADDRESS	240-250 Enterprise St., Russell, ON
SALE PRICE	\$5,595,000 (\$167.97 per sq.ft.)
LEGAL DESCRIPTION	PT LT 21-22 CON 5 RUSSELL PT 2, 3, 4, 5, 6, 7, 50R6206; RUSSELL
BUILDING AREA	33,310 sq.ft. gross area and a 31,786 sq. ft. leasable area (approx.)
LAND AREA	4.14 acres (approx.)
FRONTAGE	To be verified
FLOORS	Poured concrete, structural steel frame
YEAR BUILT	Circa 1990 by the Seller
ZONING	MP-2 – Industrial Park Zone
REALTY TAXES	\$45,705.81 (2024)

# RENT ROLL

Unit #	Tenant	Size (Sq.Ft.)	Lease Expiry Date	Net Rent Per Sq. Ft.	Total Annual Net Rent as of August 1 <sup>st</sup> , 2025	Option to Renew
1	Ashbury College	2,663	July 31, 2026	\$13.25	\$35,285	N/A
2,3,4	Vacant	7,089				
5	Vacant	2,553				
6 & 7	Vacant	4,966				
8, 9, 10 & 11	Performance Fabrication	14,515	April 30, 2028	\$7.00	\$101,605	Five year option to renew at market rent
TOTAL		31,786			\$136,890.00	

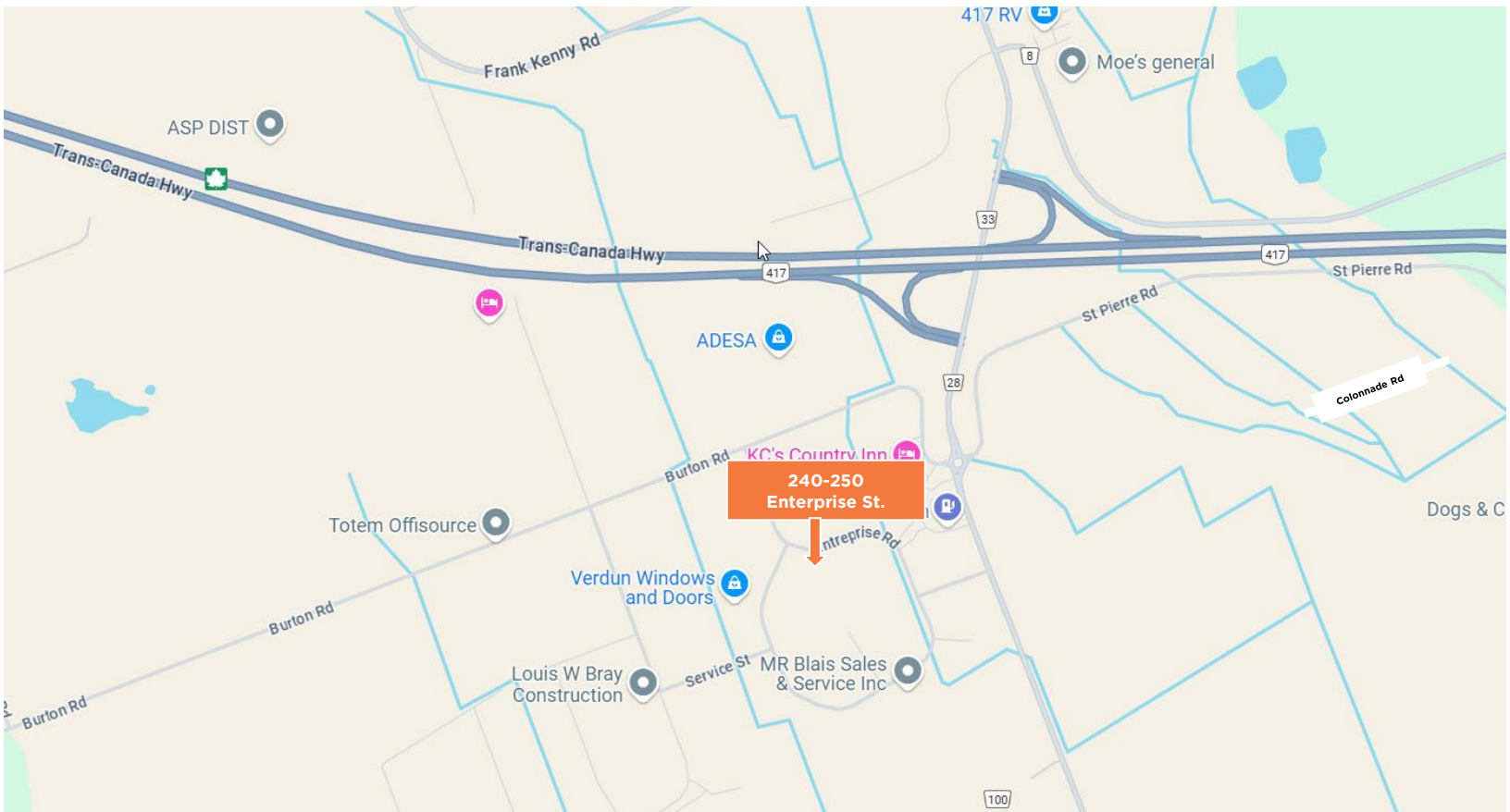
# FLOOR PLAN

240-250 Enterprise St., Russell, ON



# LOCATION

240-250 Enterprise St., Russell, ON is located in the Vars Industrial Park close to the intersection of Clement Street and Enterprise St. It is approximately 12 to 15 minutes east of the St. Laurent Blvd. and Highway 417 (Queensway) interchange.



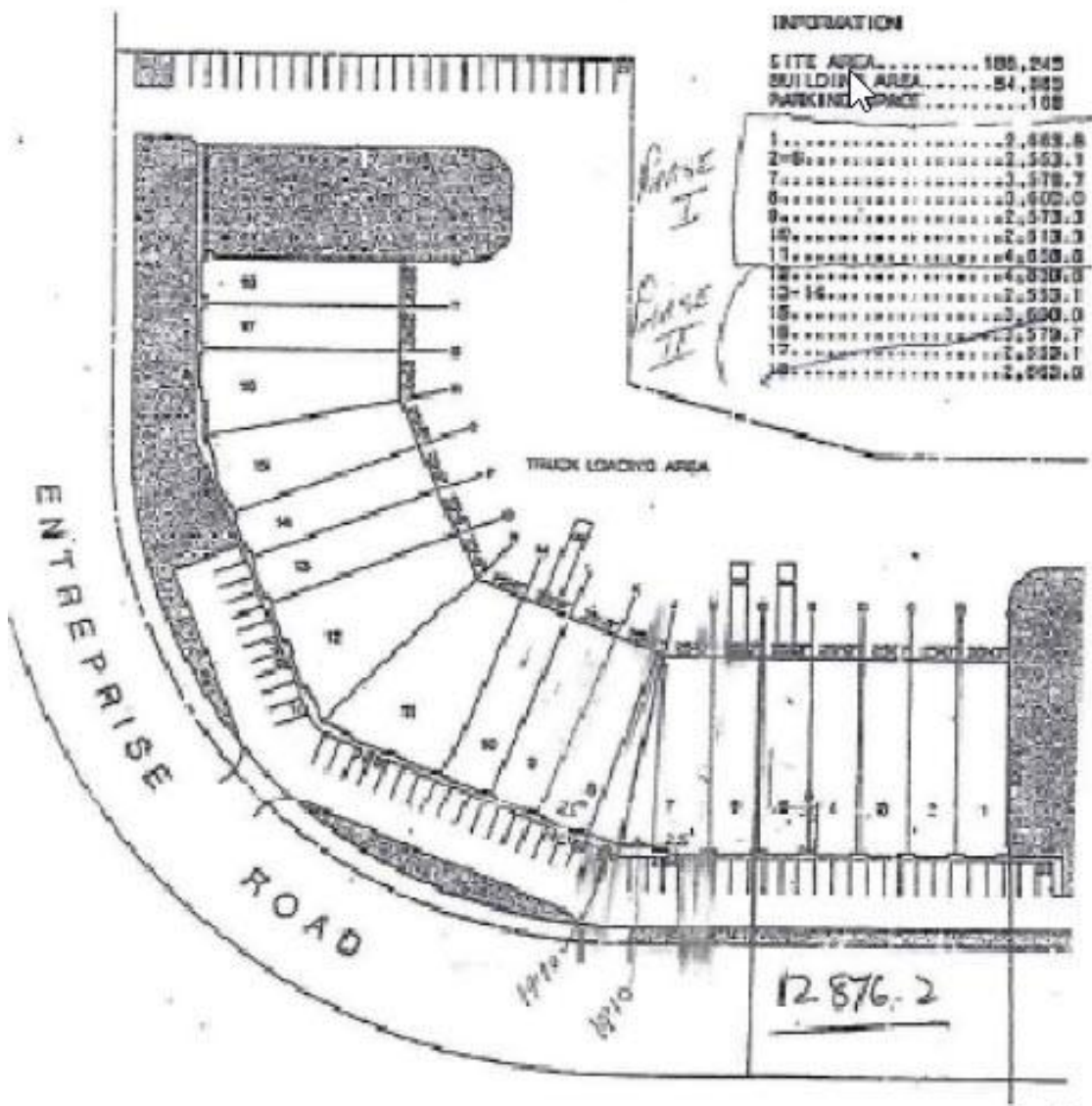
## DEMOGRAPHICS

Radius	2 KM	3 KM	5 KM
Population (2023)	211	639	2,688
Population (2028)	237	718	3,053
Population (2033)	261	791	3,378
Median Age	45	46,10	44.7
Average Household Income (2023)	\$94,206	\$100,942	\$122,515
Median Household Income (2023)	\$81,000	\$82,500	\$95,298



# SITE PLAN

## RUSSELL - G. INDUSTRIAL DEVELOPMENT RUSSELL, ONT



---

# ZONING

---

## MP-2 INDUSTRIAL PARK ZONE – PERMITTED USES

- Agricultural produce warehouse
- Automobile body shop
- Automobile dealership
- Automobile gas bar
- Automobile rental establishment
- Building contractor's shop or yard
- Building supply outlet
- Bulk storage tank
- Business incubator
- Cartage or transport yard
- Car wash
- Commercial vehicle and heavy equipment sales, rental and servicing
- Custom workshop
- Display and sales area
- Drive through, accessory to a permitted use
- Dry cleaning or laundry plant
- Factory outlet
- Farm equipment sales, rental and servicing
- Food processing plant
- Industrial use, light, provided such industry is a low water user
- Industrial use, medium, provided such industry is a low water user
- Medical marijuana production facility, provided such facility is a low water user
- Merchandise service shop
- Mini-warehouse and public storage
- Office
- Open storage, accessory to a permitted use
- Propane cylinder exchange facility
- Recycling depot
- Rental establishment
- Research and development centre
- Service and repair shop
- Transportation depot
- Transportation terminal
- Warehouse
- Waste processing and transfer facility
- Wholesale establishment

# AERIAL MAP



**PHILIP ZUNDER** President | Broker of Record  
613.725.7170 | [pzunder@cdnglobal.com](mailto:pzunder@cdnglobal.com)

**JOEL FREEDMAN** | Broker  
819.360.7108 | [jfreedman@cdnglobal.com](mailto:jfreedman@cdnglobal.com)

**CDN GLOBAL (OTTAWA) LTD.**  
1419 Carling Avenue, Suite 203 | Ottawa, ON | K1Z 7L6  
[www.cdnglobal.com](http://www.cdnglobal.com)

This communication is intended for general information only and not to be relied upon in any way. Consequently, no responsibility or liability whatsoever can be accepted by CDNGLOBAL for any loss or damage resulting from any use of, reliance on or reference to the contents of this document, including hypertext links to external sources. In addition, as a general communication, this material does not necessarily represent the view of CDNGLOBAL in relation to particular properties or projects. This communication is not intended to cause or induce breach of any agency agreement. Reproduction or Distribution of this communication in whole or in part is not allowed without prior written approval of CDNGLOBAL.

**CDNGLOBAL**<sup>®</sup>  
Commercial Real Estate Advisors