

SPEC WORK UNDERWAY!



Prominent Building Signage
Available Facing Riverside Dr

OFFICE FOR LEASE

2140 RIVERSIDE DR

COLUMBUS, OH





BUILDING HIGHLIGHTS

2140 Riverside Dr is a rare office opportunity located near the thriving submarkets of Upper Arlington & Grandview. The property provides easy access to abundant amenities, including restaurants, shops, and outdoor spaces, as well as convenient access to major roadways & freeways.

\$22.00/SF FSG
Lease Rate

OVER \$300K
In Renovations to Suite A

8,879 SF
Total Building Size

881 - 2,846 SF
Available

Rare office leasing opportunity along Riverside Dr in Upper Arlington

Spec work currently underway

Suite A was recently remodeled and the furniture will be included in the lease offering a plug & play opportunity

Quick access to Downtown Columbus & northern suburbs, as well as major roadways & freeways

Nearby amenities include The Shops on Lane, Kingsdale, Downtown Grandview, and Grandview Crossing

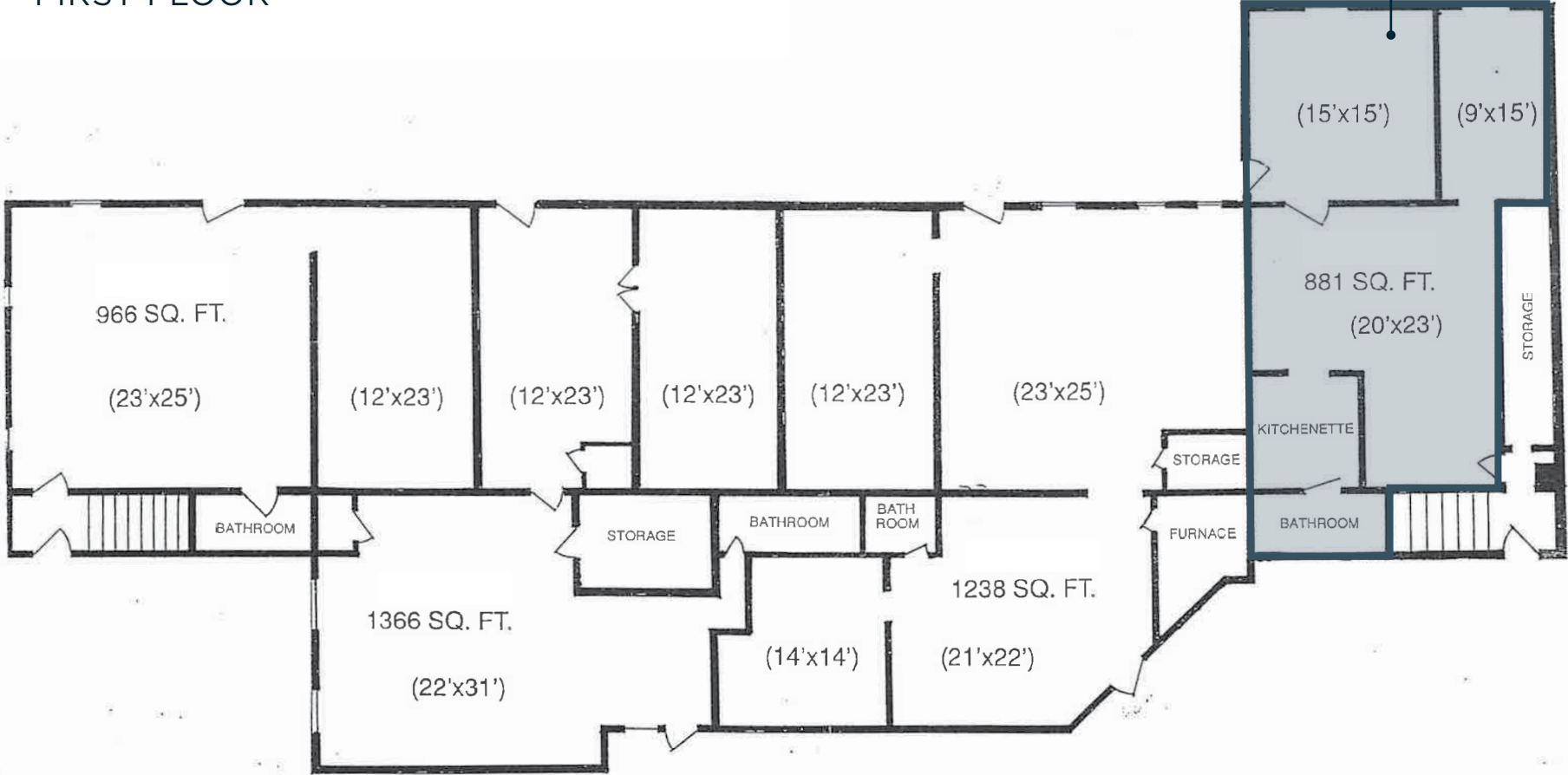
Prime signage opportunity with direct visibility to high traffic counts



FLOOR PLAN

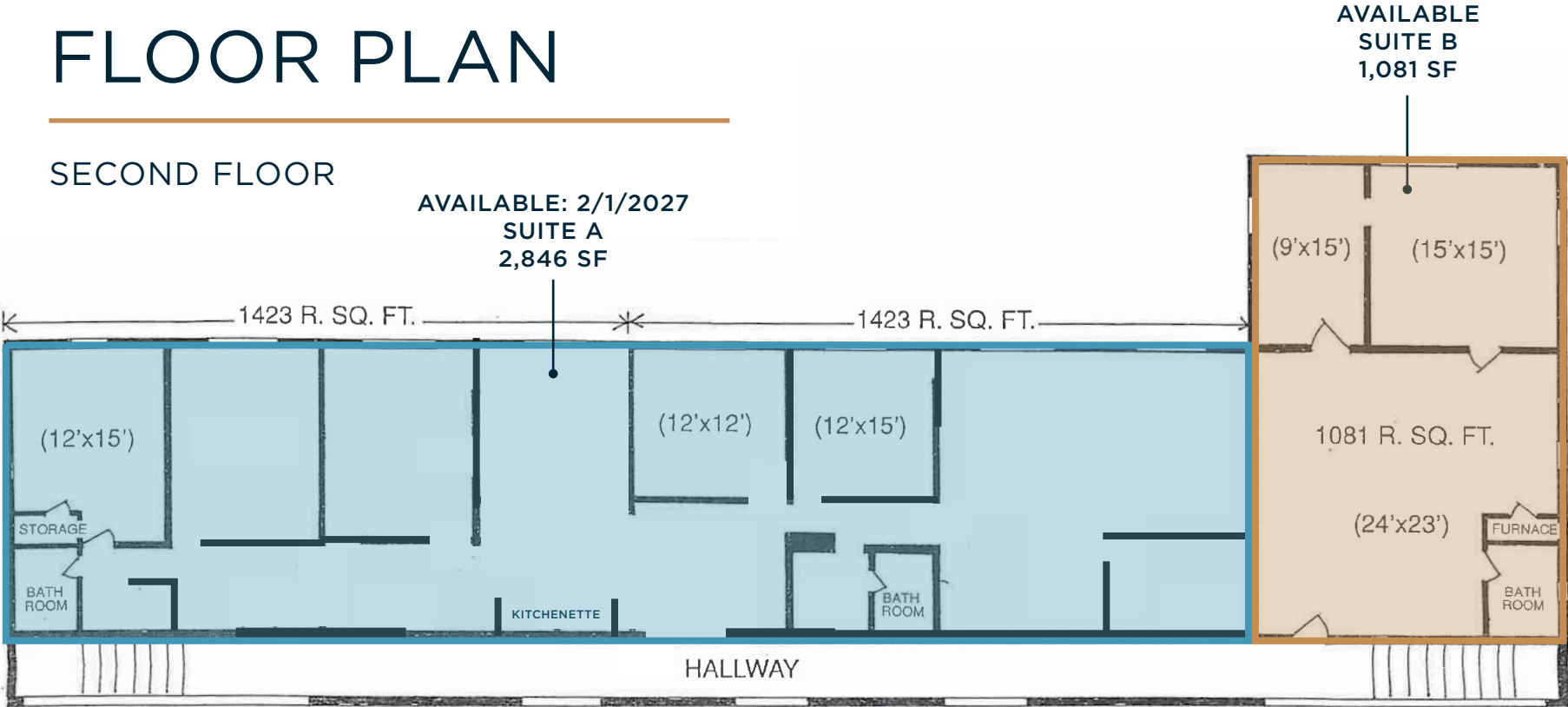
FIRST FLOOR

AVAILABLE
SUITE D
881 SF

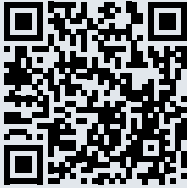


FLOOR PLAN

SECOND FLOOR



PLUG & PLAY LAYOUT FOR SUITE A:



Scan QR code or [click here](#) to view a 360-degree tour of Suite A.

BUILDING PHOTOS



BUILDING LOCATION

2140 Riverside Dr is located near Upper Arlington and Grandview Heights and within close proximity to abundant amenities, including Whole Foods, Giant Eagle Market District, Hudson 29, First Watch, Quarry Trails Metro Park, Scioto Country Club, and many more.



KINGSDALE CENTER
2.2 MILES

SCIOTO COUNTRY CLUB

THE SHOPS ON LANE
2 MILES

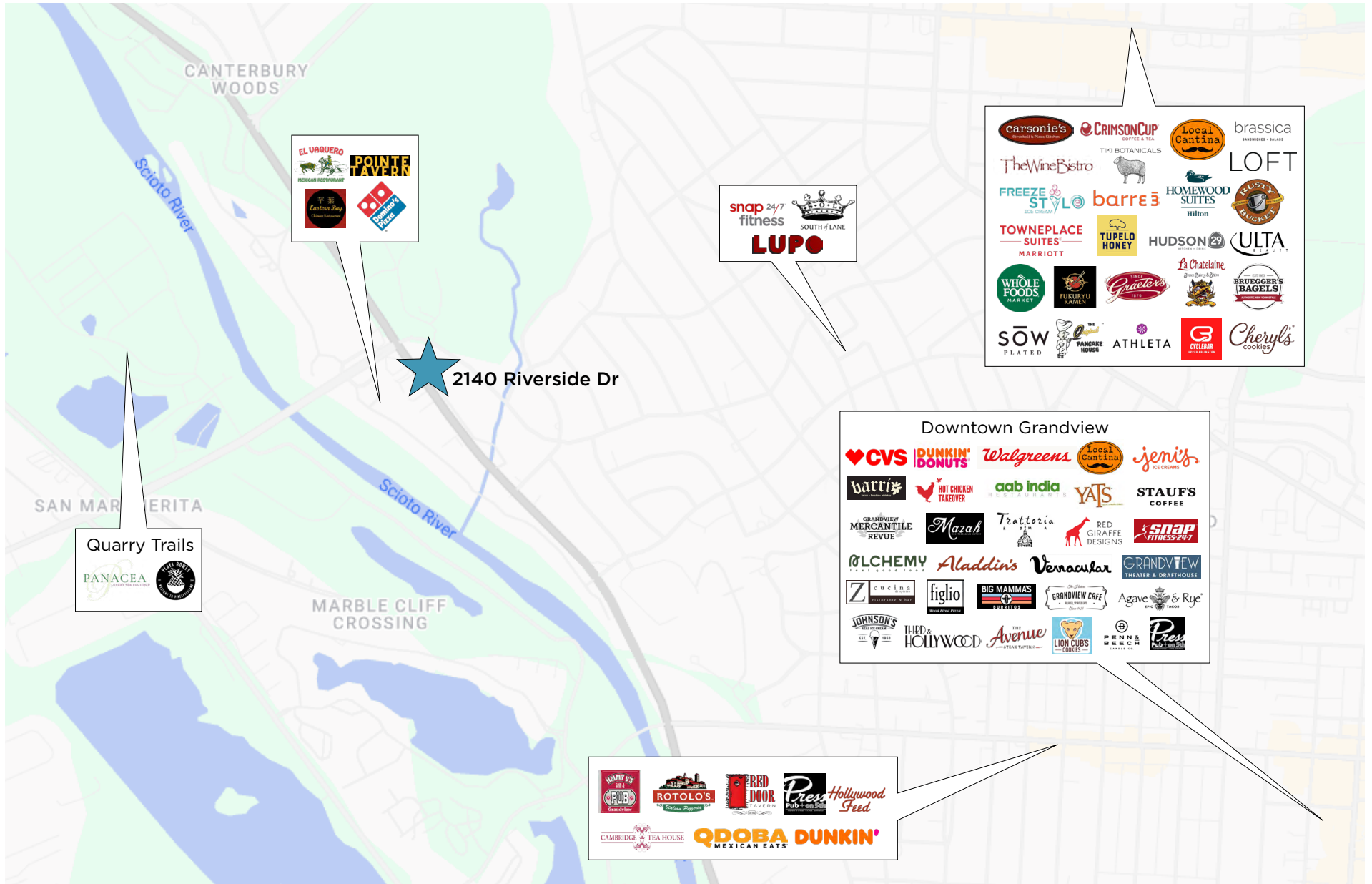
QUARRY TRAILS METRO PARK
0.5 MILES

2140 RIVERSIDE DR

GRANDVIEW CROSSING, HISTORIC GRANDVIEW, & GRANDVIEW YARD

Riverside Dr

NEARBY AMENITIES





500 S Front St, Suite 980
Columbus, OH 43215



Grant Hartman

+1 614 312 8163
grant.hartman@alliedre.com

Ryan McHugh

+1 614 940 2978
ryan.mchugh@alliedre.com

Jake Nolan

+1 614 736 1232
jake.nolan@alliedre.com