



VALUE INDUSTRIAL PARTNERS, LLC

Industrial Real Estate Investment, Brokerage and Management

477 W. Wrightwood Avenue, Elmhurst, Illinois 60126 TEL: 630-333-1900 FAX: 630-333-1910



5420 Newport Drive, Unit 46 Rolling Meadows, Illinois

FOR LEASE
2,513 SF

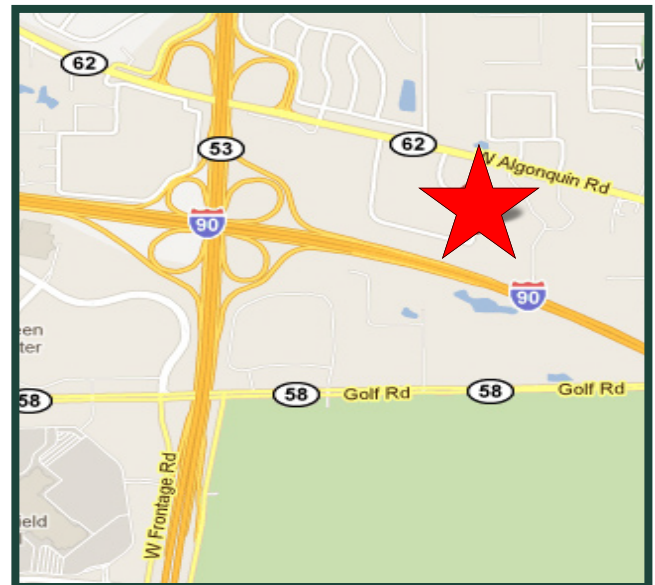
Building Specifications

Available Size:	2,513 Square Feet
Building Size:	157,167 Square Feet
Office Size:	1,400 Square Feet (Can Be Reduced)
Ceiling Height:	12'
Loading:	1 Drive-in Door (8' X 10')
Heat:	Gas
Sprinklers:	Yes
Power:	100 Amps/3 Phase
Taxes:	Included with Current Stop
Operating Expenses:	Included with Current Stop

Comments

- Professionally owned and managed
- Prime location at Rt. 53 & I-90
- 4 Private Offices & 1 Conference Room
- Individual Drive-In Door

Officers of the firm have an ownership interest in this property.
Submitted subject to error, change in status, or withdrawal without notice.



For Further Information, Please Contact:

Brian P. Gedvilas, Director of Leasing
bgedvilas@valueindustrialpartners.com

Jennifer L. Dobrowolski
jdobrowolski@valueindustrialpartners.com

TEL: 630-333-1900 FAX: 630-333-1910

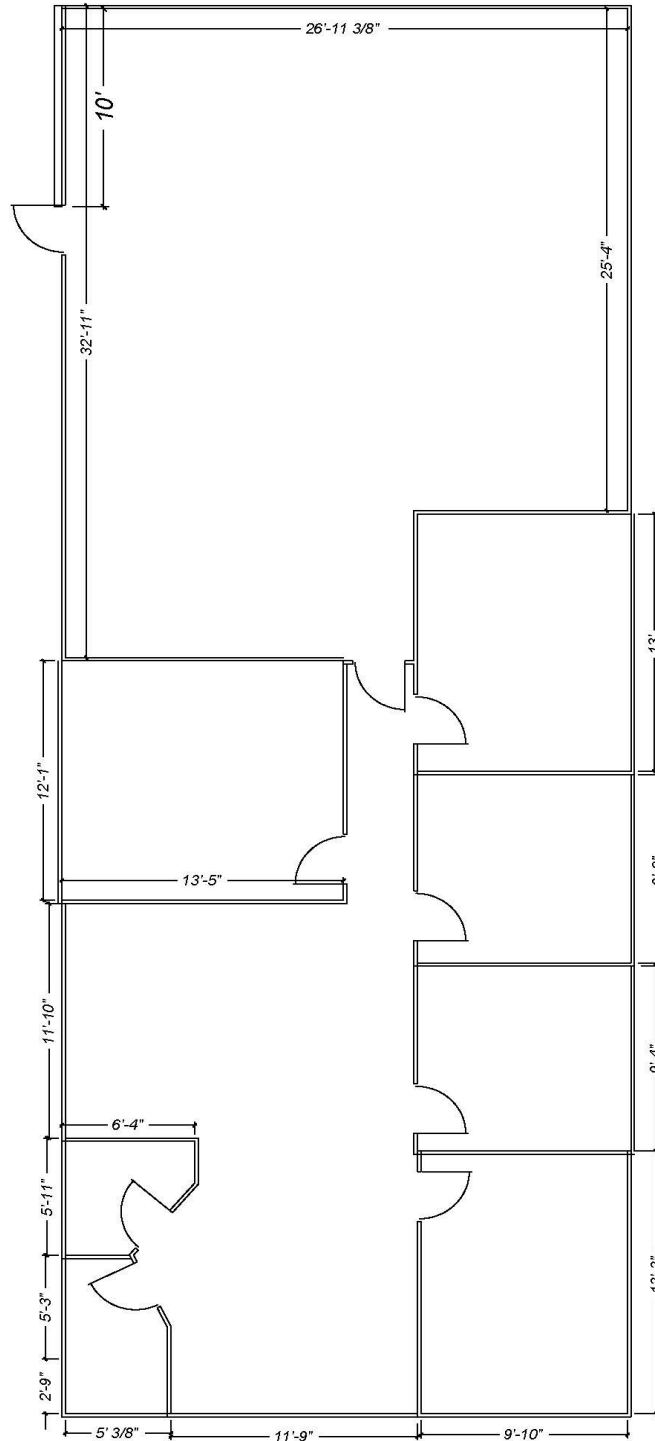


VALUE INDUSTRIAL PARTNERS, LLC

Industrial Real Estate Investment, Brokerage and Management

477 W. Wrightwood Avenue, Elmhurst, Illinois 60126 TEL: 630-333-1900 FAX: 630-333-1910

LAYOUT



FOR ILLUSTRATION PURPOSES ONLY

Officers of the firm have an ownership interest in this property.
Submitted subject to error, change in status, or withdrawal without notice.