

FOR SALE OR LEASE

+/- 11,500 SF ON +/- 2.44 AC

12583 HWY 90, BEAUMONT, TX 77713

**\$850,000 FOR SALE
OR \$8,500/Mo FOR LEASE**

BRING OFFERS!



W. DOUGLASS LARSON

PRINCIPAL /
ASSOCIATE BROKER
DOUG@TEXASCRES.COM
(713) 824-3799

TRACY EDDY

PRINCIPAL /
ASSOCIATE BROKER
TRACY@TEXASCRES.COM
(713) 907-1707

CHRIS JOYCE

PRINCIPAL
CHRIS@TEXASCRES.COM
(936) 577-0836





PROPERTY HIGHLIGHTS



Location

12583 Hwy 90
Beaumont, TX 77713



Asking Price

\$8,500/Mo Lease Rate or
\$850,000 Purchase



Size

+/- 11,500 SF on +/- 2.44 AC

Contact:

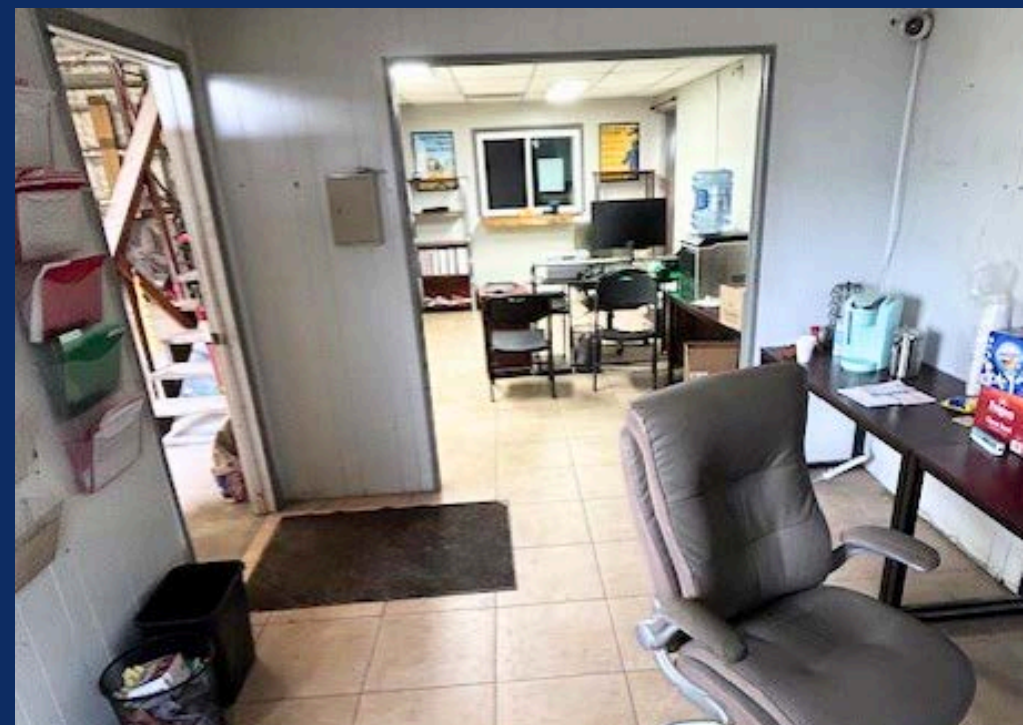
W. Douglass Larson
Principal / Associate Broker
Doug@TexasCRES.com
(713) 824-3799

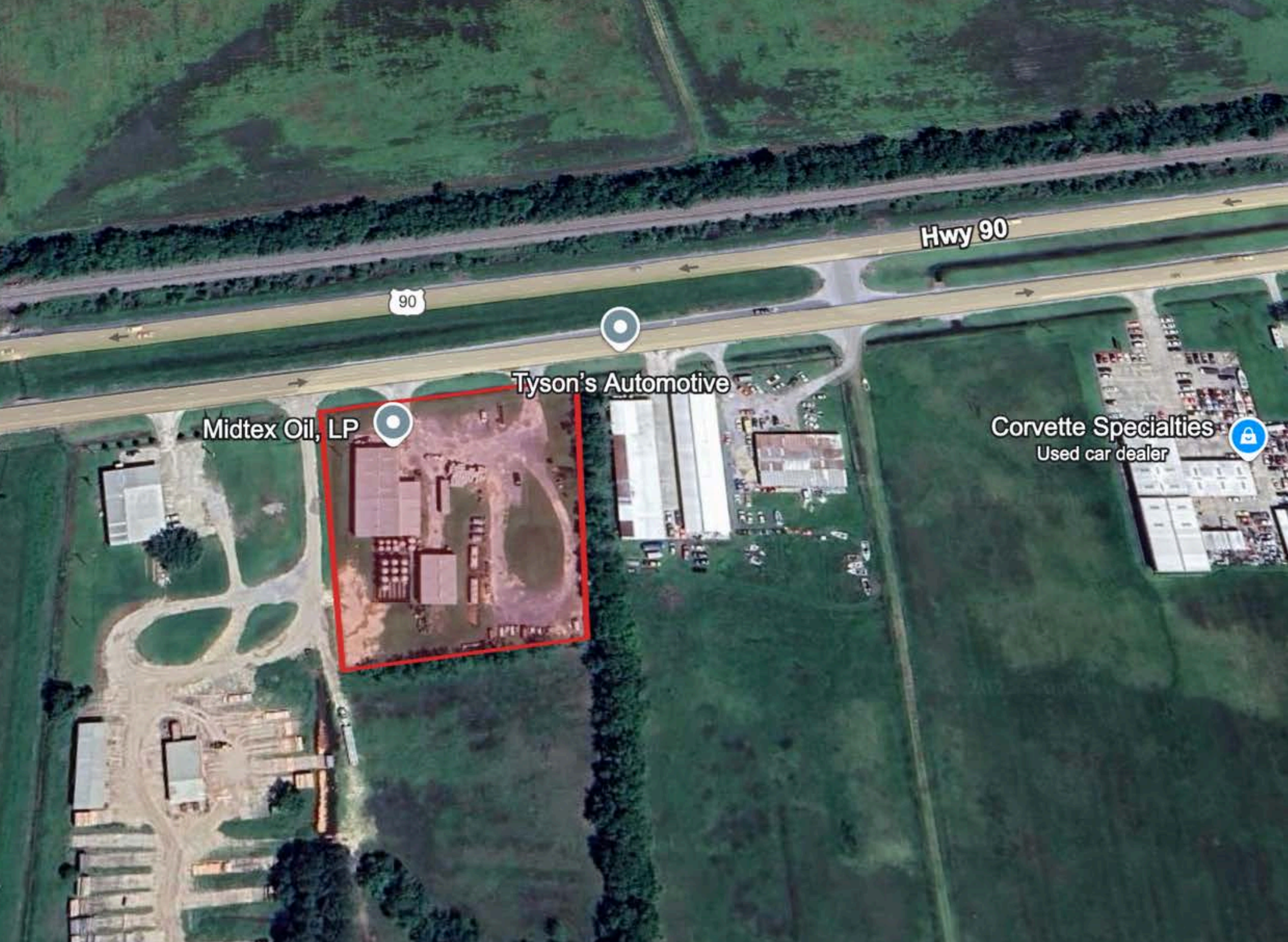
Tracy Eddy
Principal / Associate Broker
Tracy@TexasCRES.com
(713) 907-1707

Chris Joyce
Principal
Chris@TexasCRES.com
(936) 577-0836

- Excellent Lease or Purchase opportunity in Beaumont, TX.
- The building dimensions are:
 - Building one (Front) - 50' x 135' = +/- 6,750 SF
 - Building two (Back)- 50' x 65' = +/- 3,250 SF
 - Lean-to: 20' x 75' = 1'500 SF
- Building one has 3 roll-up doors and building two has 1 roll-up door.
- Several private offices and restroom in building one.
- Excellent visibility on Hwy 90 with +/- 305 Feet of frontage.
- Full demographic package available upon request.





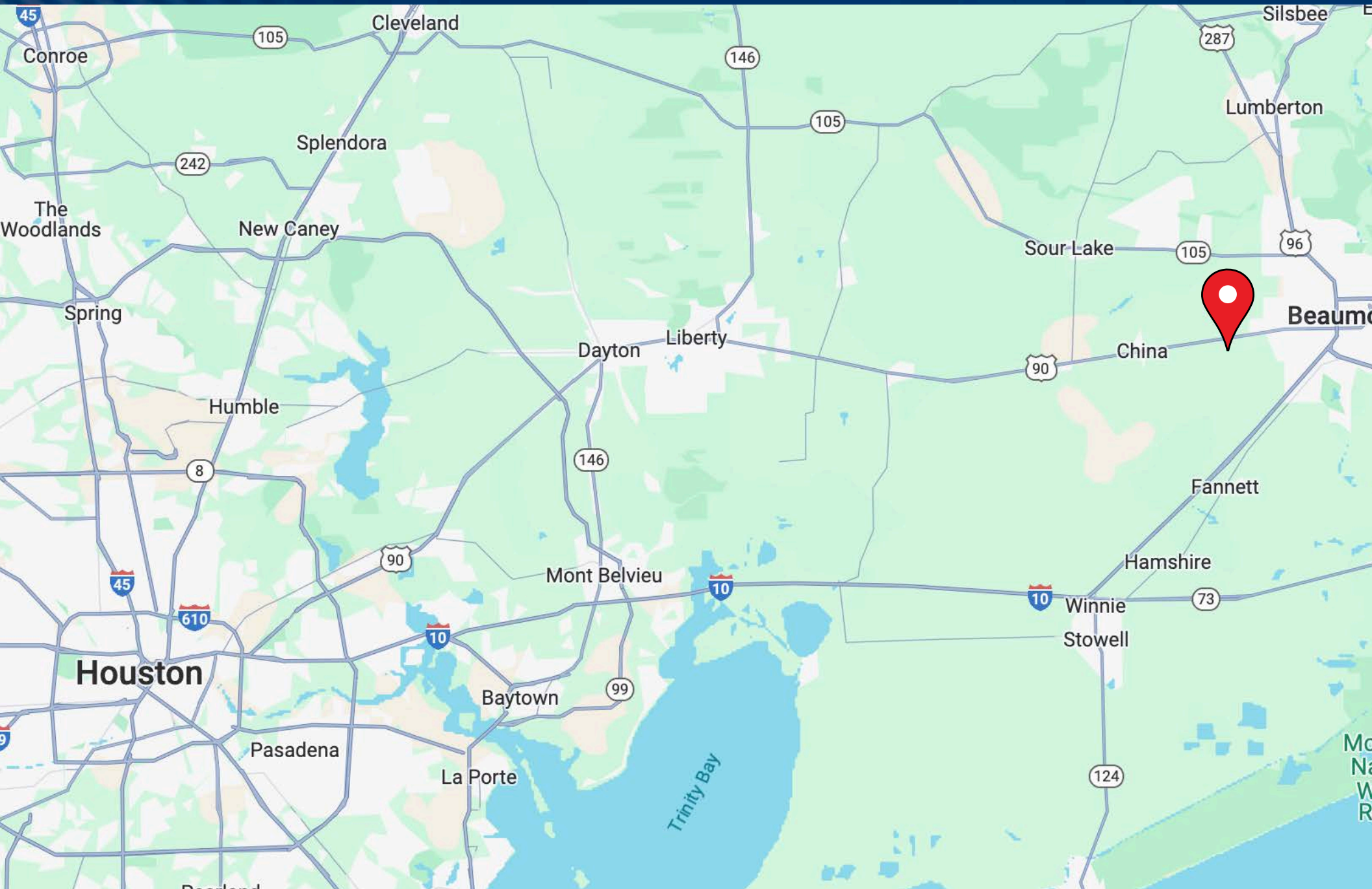


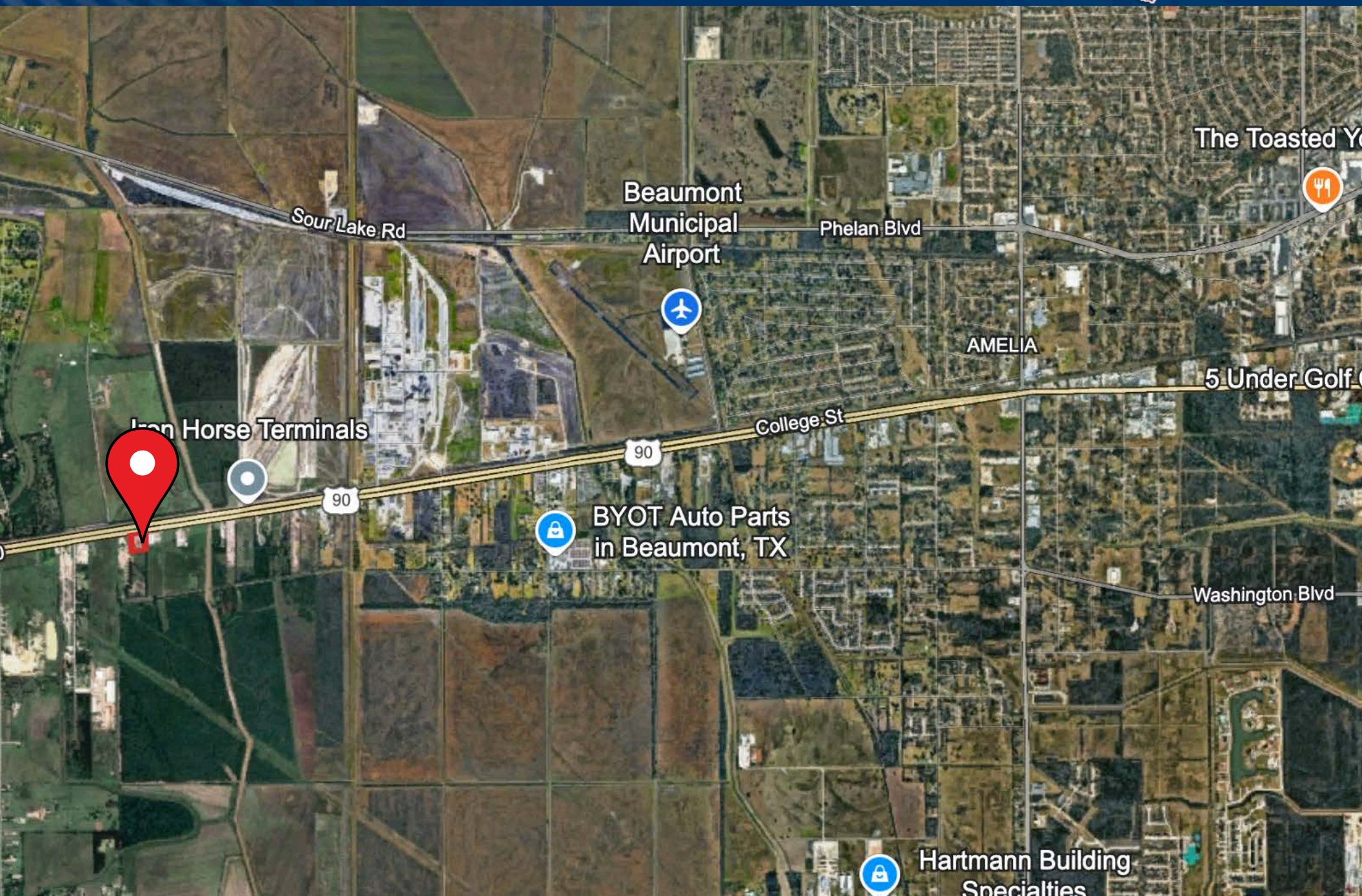
Midtex Oil, LP

Tyson's Automotive

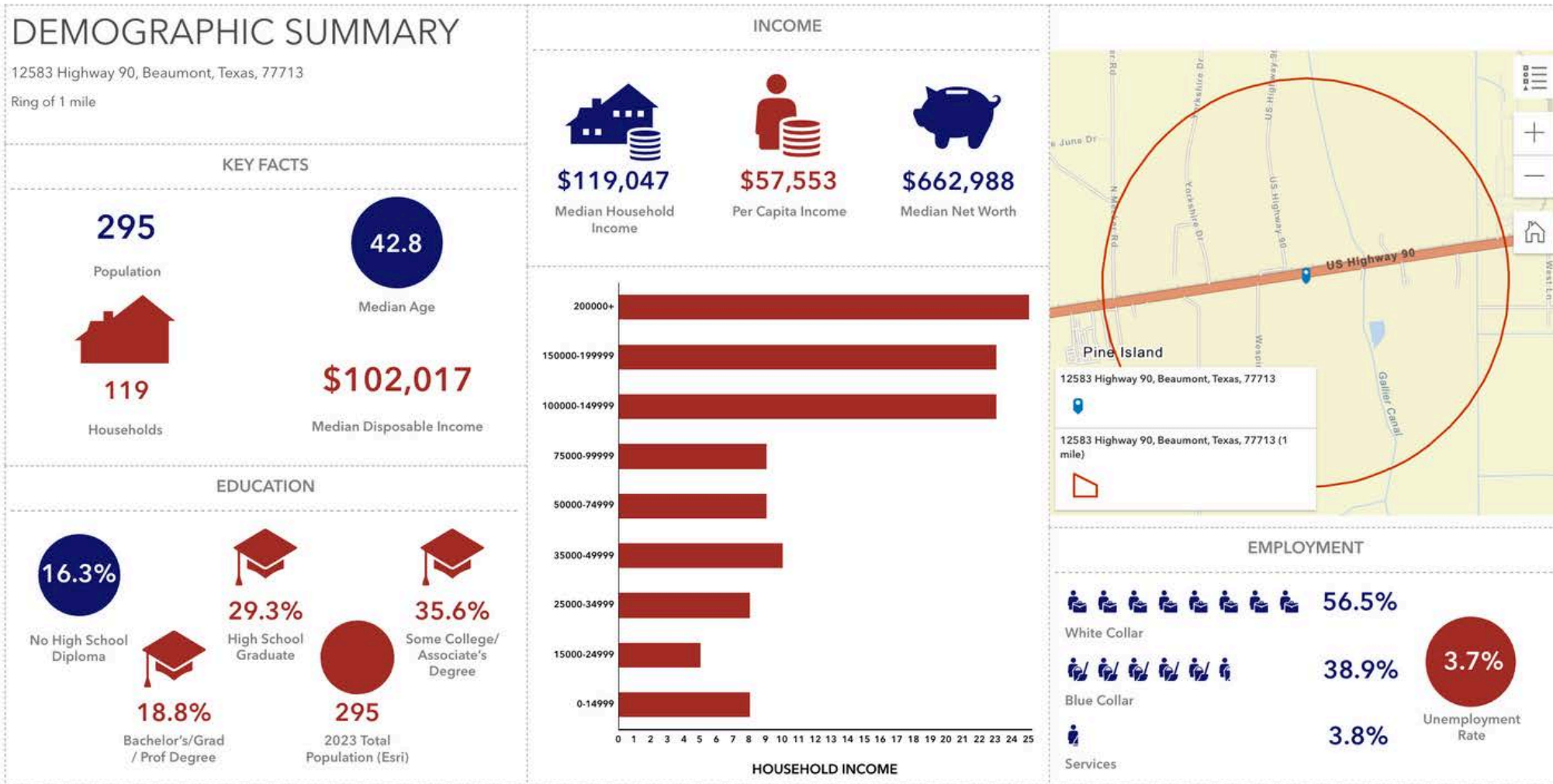
Corvette Specialties
Used car dealer

LOCATION MAP





DEMOGRAPHICS



Source: This infographic contains data provided by Esri (2024, 2029). © 2025 Esri



Information About Brokerage Services

11-2-2015

Texas law requires all real estate license holders to give the following information about brokerage services to prospective buyers, tenants, sellers and landlords.

TYPES OF REAL ESTATE LICENSE HOLDERS:

- **A BROKER** is responsible for all brokerage activities, including acts performed by sales agents sponsored by the broker.
- **A SALES AGENT** must be sponsored by a broker and works with clients on behalf of the broker.

A BROKER'S MINIMUM DUTIES REQUIRED BY LAW (A client is the person or party that the broker represents):

- Put the interests of the client above all others, including the broker's own interests;
- Inform the client of any material information about the property or transaction received by the broker;
- Answer the client's questions and present any offer to or counter-offer from the client; and
- Treat all parties to a real estate transaction honestly and fairly.

A LICENSE HOLDER CAN REPRESENT A PARTY IN A REAL ESTATE TRANSACTION:

AS AGENT FOR OWNER (SELLER/LANDLORD): The broker becomes the property owner's agent through an agreement with the owner, usually in a written listing to sell or property management agreement. An owner's agent must perform the broker's minimum duties above and must inform the owner of any material information about the property or transaction known by the agent, including information disclosed to the agent or subagent by the buyer or buyer's agent.

AS AGENT FOR BUYER/TENANT: The broker becomes the buyer/tenant's agent by agreeing to represent the buyer, usually through a written representation agreement. A buyer's agent must perform the broker's minimum duties above and must inform the buyer of any material information about the property or transaction known by the agent, including information disclosed to the agent by the seller or seller's agent.

AS AGENT FOR BOTH - INTERMEDIARY: To act as an intermediary between the parties the broker must first obtain the written agreement of each party to the transaction. The written agreement must state who will pay the broker and, in conspicuous bold or underlined print, set forth the broker's obligations as an intermediary. A broker who acts as an intermediary:

- Must treat all parties to the transaction impartially and fairly;
- May, with the parties' written consent, appoint a different license holder associated with the broker to each party (owner and buyer) to communicate with, provide opinions and advice to, and carry out the instructions of each party to the transaction.
- Must not, unless specifically authorized in writing to do so by the party, disclose:
 - that the owner will accept a price less than the written asking price;
 - that the buyer/tenant will pay a price greater than the price submitted in a written offer; and
 - any confidential information or any other information that a party specifically instructs the broker in writing not to disclose, unless required to do so by law.

AS SUBAGENT: A license holder acts as a subagent when aiding a buyer in a transaction without an agreement to represent the buyer. A subagent can assist the buyer but does not represent the buyer and must place the interests of the owner first.

TO AVOID DISPUTES, ALL AGREEMENTS BETWEEN YOU AND A BROKER SHOULD BE IN WRITING AND CLEARLY ESTABLISH:

- The broker's duties and responsibilities to you, and your obligations under the representation agreement.
- Who will pay the broker for services provided to you, when payment will be made and how the payment will be calculated.

LICENSE HOLDER CONTACT INFORMATION: This notice is being provided for information purposes. It does not create an obligation for you to use the broker's services. Please acknowledge receipt of this notice below and retain a copy for your records.

<u>Texas CRES, LLC</u>	<u>9004590</u>	<u>joel@texascres.com</u>	<u>(713) 473-7200</u>
Licensed Broker/Broker Firm Name or Primary Assumed Business Name	License No.	Email	Phone
<u>Joel C. English</u>	<u>465800</u>	<u>joel@texascres.com</u>	<u>(713) 473-7200</u>
Designated Broker of Firm	License No.	Email	Phone
<u>Joel C. English</u>	<u>465800</u>	<u>joel@texascres.com</u>	<u>(713) 473-7200</u>
Licensed Supervisor of Sales Agent/ Associate	License No.	Email	Phone
<u>William Douglass Larson</u>	<u>227872</u>	<u>doug@texascres.com</u>	<u>(713) 824-3799</u>
Sales Agent/Associate's Name	License No.	Email	Phone

Buyer/Tenant/Seller/Landlord Initials

Date

Regulated by the Texas Real Estate Commission

Information available at www.trec.texas.gov

TAR 2501

IABS 1-0

This form was produced by the subscriber named below through Texas FormSource.

Texas C.R.E.S. LLC, 19029 Southoff Drive, Cypress, TX 77429
Tracy Krip

Phone: (713) 997-4707

Fax:

See IABS

Produced with 25Form by 25Forms (800) 778-4444. Please Note: Form 2501, Form 2502, Form 2503, Form 2504, Form 2505, Form 2506, Form 2507, Form 2508, Form 2509, Form 2510, Form 2511, Form 2512, Form 2513, Form 2514, Form 2515, Form 2516, Form 2517, Form 2518, Form 2519, Form 2520, Form 2521, Form 2522, Form 2523, Form 2524, Form 2525, Form 2526, Form 2527, Form 2528, Form 2529, Form 2530, Form 2531, Form 2532, Form 2533, Form 2534, Form 2535, Form 2536, Form 2537, Form 2538, Form 2539, Form 2540, Form 2541, Form 2542, Form 2543, Form 2544, Form 2545, Form 2546, Form 2547, Form 2548, Form 2549, Form 2550, Form 2551, Form 2552, Form 2553, Form 2554, Form 2555, Form 2556, Form 2557, Form 2558, Form 2559, Form 2560, Form 2561, Form 2562, Form 2563, Form 2564, Form 2565, Form 2566, Form 2567, Form 2568, Form 2569, Form 2570, Form 2571, Form 2572, Form 2573, Form 2574, Form 2575, Form 2576, Form 2577, Form 2578, Form 2579, Form 2580, Form 2581, Form 2582, Form 2583, Form 2584, Form 2585, Form 2586, Form 2587, Form 2588, Form 2589, Form 2590, Form 2591, Form 2592, Form 2593, Form 2594, Form 2595, Form 2596, Form 2597, Form 2598, Form 2599, Form 2600, Form 2601, Form 2602, Form 2603, Form 2604, Form 2605, Form 2606, Form 2607, Form 2608, Form 2609, Form 2610, Form 2611, Form 2612, Form 2613, Form 2614, Form 2615, Form 2616, Form 2617, Form 2618, Form 2619, Form 2620, Form 2621, Form 2622, Form 2623, Form 2624, Form 2625, Form 2626, Form 2627, Form 2628, Form 2629, Form 2630, Form 2631, Form 2632, Form 2633, Form 2634, Form 2635, Form 2636, Form 2637, Form 2638, Form 2639, Form 2640, Form 2641, Form 2642, Form 2643, Form 2644, Form 2645, Form 2646, Form 2647, Form 2648, Form 2649, Form 2650, Form 2651, Form 2652, Form 2653, Form 2654, Form 2655, Form 2656, Form 2657, Form 2658, Form 2659, Form 2660, Form 2661, Form 2662, Form 2663, Form 2664, Form 2665, Form 2666, Form 2667, Form 2668, Form 2669, Form 2670, Form 2671, Form 2672, Form 2673, Form 2674, Form 2675, Form 2676, Form 2677, Form 2678, Form 2679, Form 2680, Form 2681, Form 2682, Form 2683, Form 2684, Form 2685, Form 2686, Form 2687, Form 2688, Form 2689, Form 2690, Form 2691, Form 2692, Form 2693, Form 2694, Form 2695, Form 2696, Form 2697, Form 2698, Form 2699, Form 2700, Form 2701, Form 2702, Form 2703, Form 2704, Form 2705, Form 2706, Form 2707, Form 2708, Form 2709, Form 2710, Form 2711, Form 2712, Form 2713, Form 2714, Form 2715, Form 2716, Form 2717, Form 2718, Form 2719, Form 2720, Form 2721, Form 2722, Form 2723, Form 2724, Form 2725, Form 2726, Form 2727, Form 2728, Form 2729, Form 2730, Form 2731, Form 2732, Form 2733, Form 2734, Form 2735, Form 2736, Form 2737, Form 2738, Form 2739, Form 2740, Form 2741, Form 2742, Form 2743, Form 2744, Form 2745, Form 2746, Form 2747, Form 2748, Form 2749, Form 2750, Form 2751, Form 2752, Form 2753, Form 2754, Form 2755, Form 2756, Form 2757, Form 2758, Form 2759, Form 2760, Form 2761, Form 2762, Form 2763, Form 2764, Form 2765, Form 2766, Form 2767, Form 2768, Form 2769, Form 2770, Form 2771, Form 2772, Form 2773, Form 2774, Form 2775, Form 2776, Form 2777, Form 2778, Form 2779, Form 2780, Form 2781, Form 2782, Form 2783, Form 2784, Form 2785, Form 2786, Form 2787, Form 2788, Form 2789, Form 2790, Form 2791, Form 2792, Form 2793, Form 2794, Form 2795, Form 2796, Form 2797, Form 2798, Form 2799, Form 2800, Form 2801, Form 2802, Form 2803, Form 2804, Form 2805, Form 2806, Form 2807, Form 2808, Form 2809, Form 2810, Form 2811, Form 2812, Form 2813, Form 2814, Form 2815, Form 2816, Form 2817, Form 2818, Form 2819, Form 2820, Form 2821, Form 2822, Form 2823, Form 2824, Form 2825, Form 2826, Form 2827, Form 2828, Form 2829, Form 2830, Form 2831, Form 2832, Form 2833, Form 2834, Form 2835, Form 2836, Form 2837, Form 2838, Form 2839, Form 2840, Form 2841, Form 2842, Form 2843, Form 2844, Form 2845, Form 2846, Form 2847, Form 2848, Form 2849, Form 2850, Form 2851, Form 2852, Form 2853, Form 2854, Form 2855, Form 2856, Form 2857, Form 2858, Form 2859, Form 2860, Form 2861, Form 2862, Form 2863, Form 2864, Form 2865, Form 2866, Form 2867, Form 2868, Form 2869, Form 2870, Form 2871, Form 2872, Form 2873, Form 2874, Form 2875, Form 2876, Form 2877, Form 2878, Form 2879, Form 2880, Form 2881, Form 2882, Form 2883, Form 2884, Form 2885, Form 2886, Form 2887, Form 2888, Form 2889, Form 2890, Form 2891, Form 2892, Form 2893, Form 2894, Form 2895, Form 2896, Form 2897, Form 2898, Form 2899, Form 2900, Form 2901, Form 2902, Form 2903, Form 2904, Form 2905, Form 2906, Form 2907, Form 2908, Form 2909, Form 2910, Form 2911, Form 2912, Form 2913, Form 2914, Form 2915, Form 2916, Form 2917, Form 2918, Form 2919, Form 2920, Form 2921, Form 2922, Form 2923, Form 2924, Form 2925, Form 2926, Form 2927, Form 2928, Form 2929, Form 2930, Form 2931, Form 2932, Form 2933, Form 2934, Form 2935, Form 2936, Form 2937, Form 2938, Form 2939, Form 2940, Form 2941, Form 2942, Form 2943, Form 2944, Form 2945, Form 2946, Form 2947, Form 2948, Form 2949, Form 2950, Form 2951, Form 2952, Form 2953, Form 2954, Form 2955, Form 2956, Form 2957, Form 2958, Form 2959, Form 2960, Form 2961, Form 2962, Form 2963, Form 2964, Form 2965, Form 2966, Form 2967, Form 2968, Form 2969, Form 2970, Form 2971, Form 2972, Form 2973, Form 2974, Form 2975, Form 2976, Form 2977, Form 2978, Form 2979, Form 2980, Form 2981, Form 2982, Form 2983, Form 2984, Form 2985, Form 2986, Form 2987, Form 2988, Form 2989, Form 2990, Form 2991, Form 2992, Form 2993, Form 2994, Form 2995, Form 2996, Form 2997, Form 2998, Form 2999, Form 3000, Form 3001, Form 3002, Form 3003, Form 3004, Form 3005, Form 3006, Form 3007, Form 3008, Form 3009, Form 3010, Form 3011, Form 3012, Form 3013, Form 3014, Form 3015, Form 3016, Form 3017, Form 3018, Form 3019, Form 3020, Form 3021, Form 3022, Form 3023, Form 3024, Form 3025, Form 3026, Form 3027, Form 3028, Form 3029, Form 3030, Form 3031, Form 3032, Form 3033, Form 3034, Form 3035, Form 3036, Form 3037, Form 3038, Form 3039, Form 3040, Form 3041, Form 3042, Form 3043, Form 3044, Form 3045, Form 3046, Form 3047, Form 3048, Form 3049, Form 3050, Form 3051, Form 3052, Form 3053, Form 3054, Form 3055, Form 3056, Form 3057, Form 3058, Form 3059, Form 3060, Form 3061, Form 3062, Form 3063, Form 3064, Form 3065, Form 3066, Form 3067, Form 3068, Form 3069, Form 3070, Form 3071, Form 3072, Form 3073, Form 3074, Form 3075, Form 3076, Form 3077, Form 3078, Form 3079, Form 3080, Form 3081, Form 3082, Form 3083, Form 3084, Form 3085, Form 3086, Form 3087, Form 3088, Form 3089, Form 3090, Form 3091, Form 3092, Form 3093, Form 3094, Form 3095, Form 3096, Form 3097, Form 3098, Form 3099, Form 3100, Form 3101, Form 3102, Form 3103, Form 3104, Form 3105, Form 3106, Form 3107, Form 3108, Form 3109, Form 3110, Form 3111, Form 3112, Form 3113, Form 3114, Form 3115, Form 3116, Form 3117, Form 3118, Form 3119, Form 3120, Form 3121, Form 3122, Form 3123, Form 3124, Form 3125, Form 3126, Form 3127, Form 3128, Form 3129, Form 3130, Form 3131, Form 3132, Form 3133, Form 3134, Form 3135, Form 3136, Form 3137, Form 3138, Form 3139, Form 3140, Form 3141, Form 3142, Form 3143, Form 3144, Form 3145, Form 3146, Form 3147, Form 3148, Form 3149, Form 3150, Form 3151, Form 3152, Form 3153, Form 3154, Form 3155, Form 3156, Form 3157, Form 3158, Form 3159, Form 3160, Form 3161, Form 3162, Form 3163, Form 3164, Form 3165, Form 3166, Form 3167, Form 3168, Form 3169, Form 3170, Form 3171, Form 3172, Form 3173, Form 3174, Form 3175, Form 3176, Form 3177, Form 3178, Form 3179, Form 3180, Form 3181, Form 3182, Form 3183, Form 3184, Form 3185, Form 3186, Form 3187, Form 3188, Form 3189, Form 3190, Form 3191, Form 3192, Form 3193, Form 3194, Form 3195, Form 3196, Form 3197, Form 3198, Form 3199, Form 3200, Form 3201, Form 3202, Form 3203, Form 3204, Form 3205, Form 3206, Form 3207, Form 3208, Form 3209, Form 3210, Form 3211, Form 3212, Form 3213, Form 3214, Form 3215, Form 3216, Form 3217, Form 3218, Form 3219, Form 3220, Form 3221, Form 3222, Form 3223, Form 3224, Form 3225, Form 3226, Form 3227, Form 3228, Form 3229, Form 3230, Form 3231, Form 3232, Form 3233, Form 3234, Form 3235, Form 3236, Form 3237, Form 3238, Form 3239, Form 3240, Form 3241, Form 3242, Form 3243, Form 3244, Form 3245, Form 3246, Form 3247, Form 3248, Form 3249, Form 3250, Form 3251, Form 3252, Form 3253, Form 3254, Form 3255, Form 3256, Form 3257, Form 3258, Form 3259, Form 3260, Form 3261, Form 3262, Form 3263, Form 3264, Form 3265, Form 3266, Form 3267, Form 3268, Form 3269, Form 3270, Form 3271, Form 3272, Form 3273, Form 3274, Form 3275, Form 3276, Form 3277, Form 3278, Form 3279, Form 3280, Form 3281, Form 3282, Form 3283, Form 3284, Form 3285, Form 3286, Form 3287, Form 3288, Form 3289, Form 3290, Form 3291, Form 3292, Form 3293, Form 3294, Form 3295, Form 3296, Form 3297, Form 3298, Form 3299, Form 3300, Form 3301, Form 3302, Form 3303, Form 3304, Form 3305, Form 3306, Form 3307, Form 3308, Form 3309, Form 3310, Form 3311, Form 3312, Form 3313, Form 3314, Form 3315, Form 3316, Form 3317, Form 3318, Form 3319, Form 3320, Form 3321, Form 3322, Form 3323, Form 3324, Form 3325, Form 3326, Form 3327, Form 3328, Form 3329, Form 3330, Form 3331, Form 3332, Form 3333, Form 3334, Form 3335, Form 3336, Form 3337, Form 3338, Form 3339, Form 3340, Form 3341, Form 3342, Form 3343, Form 3344, Form 3345, Form 3346, Form 3347, Form 3348, Form 3349, Form 3350, Form 3351, Form 3352, Form 3353, Form 3354, Form 3355, Form 3356, Form 3357, Form 3358, Form 3359, Form 3360, Form 3361, Form 3362, Form 3363, Form 3364, Form 3365, Form 3366, Form 3367, Form 3368, Form 3369, Form 3370, Form 3371, Form 3372, Form 3373, Form 3374, Form 3375, Form 3376, Form 3377, Form 3378, Form 3379, Form 3380, Form 3381, Form 3382, Form 3383, Form 3384, Form 3385, Form 3386, Form 3387, Form 3388, Form 3389, Form 3390, Form 3391, Form 3392, Form 3393, Form 3394, Form 3395, Form 3396, Form 3397, Form 3398, Form 3399, Form 3400, Form 3401, Form 3402, Form 3403, Form 3404, Form 3405, Form 3406, Form 3407, Form 3408, Form 3409, Form 3410, Form 3411, Form 3412, Form 3413, Form 3414, Form 3415, Form 3416, Form 3417, Form 3418, Form 3419, Form 3420, Form 3421, Form 3422, Form 3423, Form 3424, Form 3425, Form 3426, Form 3427, Form 3428, Form 3429, Form 3430, Form 3431, Form 3432, Form 3433, Form 3434, Form 3435, Form 3436, Form 3437, Form 3438, Form 3439, Form 3440, Form 3441, Form 3442, Form 3443, Form 3444, Form 3445, Form 3446, Form 3447, Form 3448, Form 3449, Form 3450, Form 3451, Form 3452, Form 3453, Form 3454, Form 3455, Form 3456, Form 3457, Form 3458, Form 3459, Form 3460, Form 3461, Form 3462, Form 3463, Form 3464, Form 3465, Form 3466, Form 3467, Form 3468, Form 3469, Form 3470, Form 3471, Form 3472, Form 3473, Form 3474, Form 3475, Form 3476, Form 3477, Form 3478, Form 3479, Form 3480, Form 3481, Form 3482, Form 3483, Form 3484, Form 3485, Form 3486, Form 3487, Form 3488, Form 3489, Form 3490, Form 3491, Form 3492, Form 3493, Form 3494, Form 3495, Form 3496, Form 3497, Form 3498, Form 3499, Form 3500, Form 3501, Form 3502, Form 3503, Form 3504, Form 3505, Form 3506, Form 3507, Form 3508, Form 3509, Form 3510, Form 3511, Form 3512, Form 3513, Form 3514, Form 3515, Form 3516, Form 3517, Form 3518, Form 3519, Form 3520, Form 3521, Form 3522, Form 3523, Form 3524, Form 3525, Form 3526, Form 3527, Form 3528, Form 3529, Form 3530, Form 3531, Form 3532, Form 3533, Form 3534, Form 3535, Form 3536, Form 3537, Form 3538, Form 3539, Form 3540, Form 3541, Form 3542, Form 3543, Form 3544, Form 3545, Form 3546, Form 3547, Form 3548, Form 3549, Form 3550, Form 3551, Form 3552, Form 3553, Form 3554, Form 3555, Form 3556, Form 3557, Form 3558, Form 3559, Form 3560, Form 3561, Form 3562, Form 3563, Form 3564, Form 3565, Form 3566, Form 3567, Form 3568, Form 3569, Form 3570, Form 3571, Form 3572, Form 3573, Form 3574, Form 3575, Form 3576, Form 3577, Form 3578, Form 3579, Form 3580, Form 3581, Form 3582, Form 3583, Form 3584, Form 3585, Form 3586, Form 3587, Form 3588, Form 3589, Form 3590, Form 3591, Form 3592, Form 3593, Form 3594, Form 3595, Form 3596, Form 3597, Form 3598, Form 3599, Form 3600, Form 3601, Form 3602, Form 3603, Form 3604, Form 3605, Form 3606, Form 3607, Form 3608, Form 3609, Form 3610, Form 3611, Form 3612, Form 3613, Form 3614, Form 3615, Form 3616, Form 3617, Form 3618, Form 3619, Form 3620, Form 3621, Form 3622, Form 3623, Form 3624, Form 3625, Form 3626, Form 3627, Form 3628, Form 3629, Form 3630, Form 3631, Form 3632, Form 3633, Form 3634, Form 3635, Form 3636, Form 3637, Form 3638, Form 3639, Form 3640, Form 3641, Form 3642, Form 3643, Form 3644, Form 3645, Form 3646, Form 3647, Form 3648, Form 3649, Form 3650, Form 3651, Form 3652, Form 3653, Form 3654, Form 3655, Form 3656, Form 3657, Form 3658, Form 3659, Form 3660, Form 3661, Form 3662, Form 3663, Form 3664, Form 3665, Form 3666, Form 3667, Form 3668, Form 3669, Form 3670, Form 3671, Form 3672, Form 3673, Form 3674, Form 3675, Form 3676, Form 3677, Form 3678, Form 3679, Form 3680, Form 3681, Form 3682, Form 3683, Form 3684, Form 3685, Form 3686, Form 3687, Form 3688, Form 3689, Form 3690, Form 3691, Form 3692, Form 3693, Form 3694, Form 3695, Form 3696, Form 3697, Form 3698, Form 3699, Form 3700, Form 3701, Form 3702, Form 3703, Form 3704, Form 3705, Form 3706, Form 3707, Form 3708, Form 3709, Form 3710, Form 3711, Form 3712, Form 3713, Form 3714, Form 3715, Form 3716, Form 3717, Form 3718, Form 3719, Form 3720, Form 3721, Form 3722, Form 3723, Form 3724, Form 3725, Form 3726, Form 3727, Form 3728, Form 3729, Form 3730, Form 3731, Form 3732, Form 3733, Form 3734, Form 3735, Form 3736, Form 3737, Form 3738, Form 3739, Form 3740, Form 3741, Form 3742, Form 3743, Form 3744, Form 3745, Form 3746, Form 3747, Form 3748, Form 3749, Form 3750, Form 3751, Form 3752, Form 3753, Form 3754, Form 3755, Form 3756, Form 3757, Form 3758, Form 3759, Form 3760, Form 3761, Form 3762, Form 3763, Form 3764, Form 3765, Form 3766, Form 3767, Form 3768, Form 3769, Form 3770, Form 3771, Form 3772, Form 3773, Form 3774, Form 3775, Form 3776, Form 3777, Form 3778, Form 3779, Form 3780, Form 3781, Form 3782, Form 3783, Form 3784, Form 3785, Form 3786, Form 3787, Form 3788, Form 3789, Form 3790, Form 3791, Form 3792, Form 3793, Form 3794, Form 3795, Form 3796, Form 3797, Form 3798, Form 3799, Form 3800, Form 3801, Form 3802, Form 3803, Form 3804, Form 3805, Form 3806, Form 3807, Form 3808, Form 3809, Form 3810, Form 3811, Form 3812, Form 3813, Form 3814, Form 3815, Form 3816, Form 3817, Form 3818, Form 3819, Form 3820, Form 3821, Form 3822, Form 3823, Form 3824, Form 3825, Form 3826, Form 3827, Form 3828, Form 3829, Form 3830, Form 3831, Form 3832, Form 3833, Form 3834, Form 3835, Form 3836, Form 3837, Form 3838, Form 3839, Form 3840, Form 3841, Form 3842, Form 3843, Form 3844, Form 3845, Form 3846, Form 3847, Form 3848, Form 3849, Form 3850, Form 3851, Form 3852, Form 3853, Form 3854, Form 3855, Form 3856, Form 3857, Form 3858, Form 3859, Form 3860, Form 3861, Form 3862, Form 3863, Form 3864, Form 3865, Form 3866, Form 3867, Form 3868, Form 3869, Form 3870, Form 3871, Form 3872, Form 387



Information contained in this marketing piece is furnished by property owners and brokers who acquire the information from third party websites, county appraisal districts, appraisers, tax services and inspectors. The information is shared with Texas CRES, LLC for reference and for marketing purposes. Texas CRES, LLC makes no representations to the validity or accuracy of the information. Neither the listing Broker, or the property owner make any warranty, guarantee, or representation to the accuracy of the information. You should rely exclusively on your own property research and studies to confirm the accuracy of any information contained herein.

TRACY EDDY
PRINCIPAL / ASSOCIATE BROKER
TRACY@TEXASCRES.COM
(713) 907-1707

CHRIS JOYCE
PRINCIPAL
CHRIS@TEXASCRES.COM
(936) 577-0836

W. DOUGLASS LARSON
PRINCIPAL / ASSOCIATE BROKER
DOUG@TEXASCRES.COM
(713) 824-3799

