



1150-1162 Spring Lake Dr

Itasca, Illinois 60143

For
Lease

PROPERTY HIGHLIGHTS

This 40,000 SF single-story office/flex building is conveniently located just off I-355, I-290, and I-390 with quick access to Lake Street at four-way interchange. The area offers a variety of nearby hotel and dining options, and low DuPage County taxes.



10,752 SF
AVAILABLE



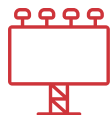
4.15 / 1,000 SF
PARKING RATIO



DRIVE-IN DOOR
ACCESS.
16' CLEAR HEIGHT



CONVENIENT
ACCESS TO HOTELS,
RESTAURANTS & RETAIL



SIGNAGE OPPORTUNITIES
AVAILABLE



EASILY ACCESSIBLE
TO I-355, I-290 & I-390

Contact

Jason Wurtz

+1 630 693 0692
jwurtz@hiffman.com

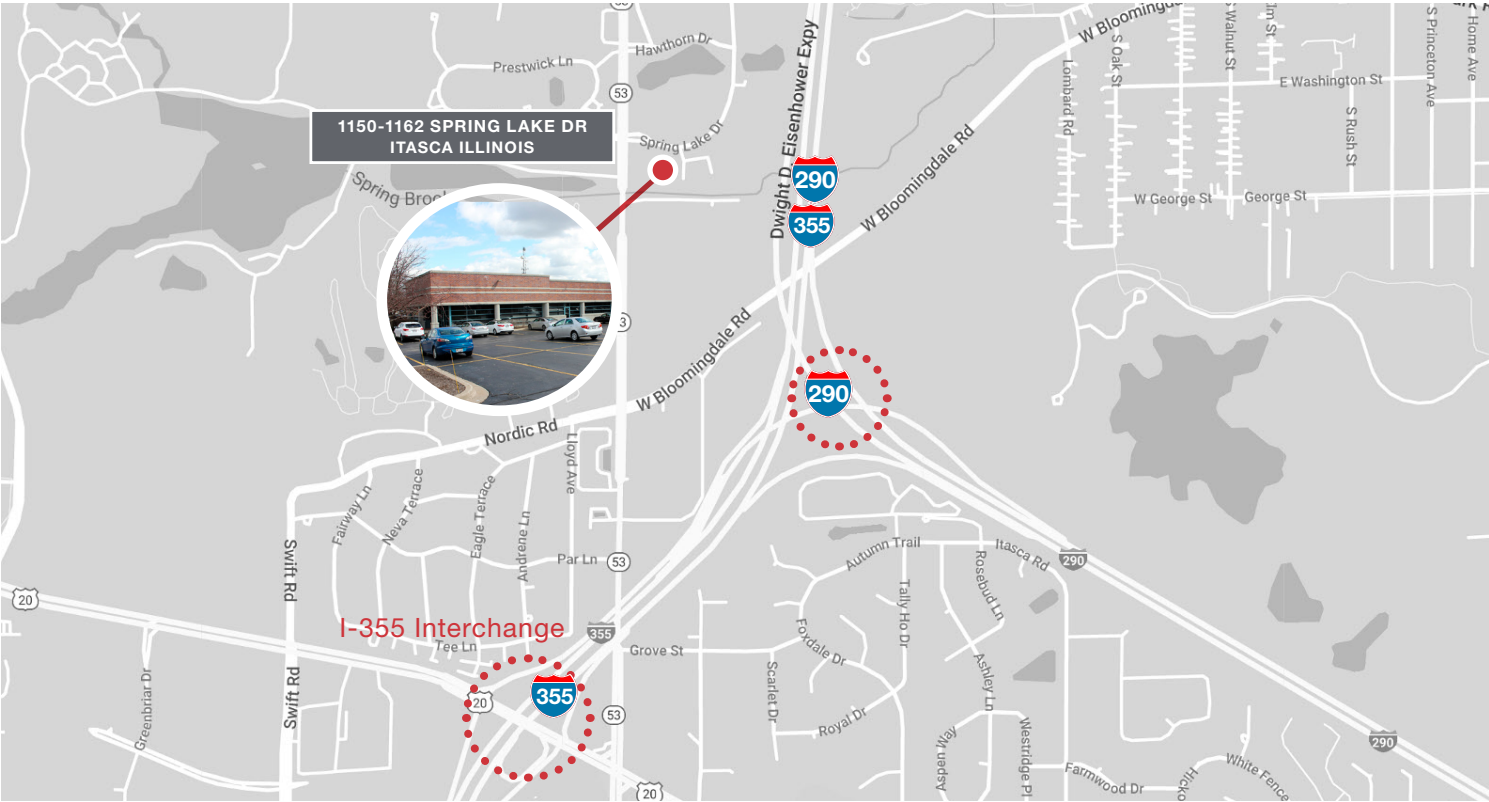
Sarah Walker

+1 630 389 8911
swalker@hiffman.com

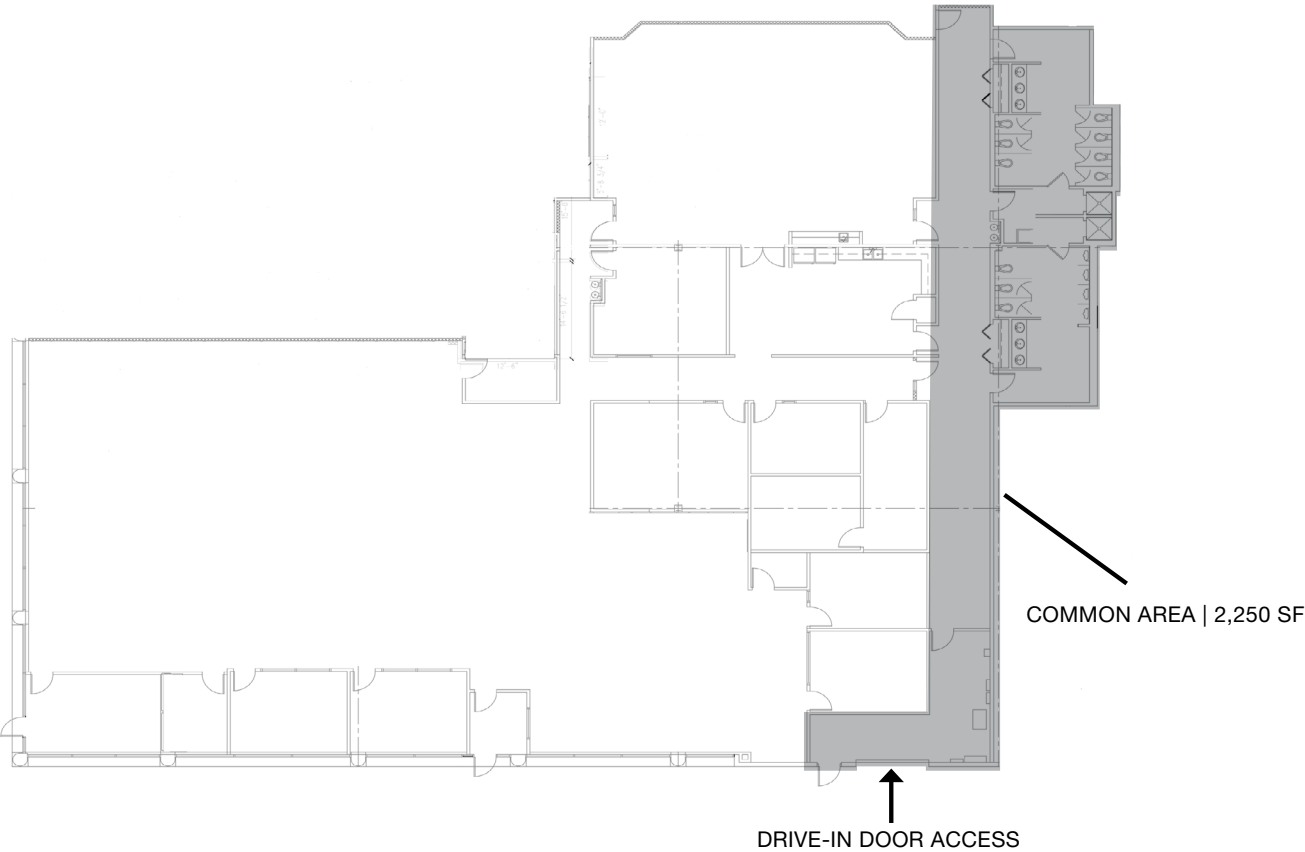
One Oakbrook Terrace
Suite 400
Oakbrook Terrace, Illinois 60181
+1 630 932 1234



1150-1162 SPRING LAKE DRIVE ITASCA ILLINOIS | FOR LEASE



 10,752 SF OFFICE SPACE AVAILABLE





Jason Wurtz

630 693 0692

jwurtz@hiffman.com

Sarah Walker

630 389 8911

swalker@hiffman.com



ONE OAKBROOK TERRACE SUITE 400
OAKBROOK TERRACE IL 60181

HIFFMAN.COM
630 932 1234