

2324 W FULTON STREET

CHICAGO, ILLINOIS



±11,500 SF OFFICE (DIVISIBLE TO 4,500 SF) // FLEX SPACE // TIMBER LOFT // TONS OF NATURAL LIGHT // AVAILABLE FOR SALE & LEASE IN CHICAGO'S KINZIE CORRIDOR

Matt Cowie

Senior Vice President
+1 312 334 7203
matt.cowie@cbre.com

John Marks

Senior Associate
+1 312 334 7204
john.marks@cbre.com

Larry Goldwasser, SIOR

Executive Vice President
+1 312 334 7201
larry.goldwasser@cbre.com

CBRE

HIGHLIGHTS

Total Building SF:	20,204 SF
Available SF:	±11,500 SF (divisible to 4,500 SF)
Asking Lease Rate:	Subject to offer
Asking Sale Price:	Subject to offer

Recently built out open office space

Tons of natural light throughout the space

Dedicated & secured parking on site

Close proximity to I-290 and I-90/94

Geothermal HVAC system

50 kw solar system dedicated to premises



2324 W FULTON STREET, CHICAGO

Matt Cowie

Senior Vice President
+1 312 334 7203
matt.cowie@cbre.com

John Marks

Senior Associate
+1 312 334 7204
john.marks@cbre.com

Larry Goldwasser, SIOR

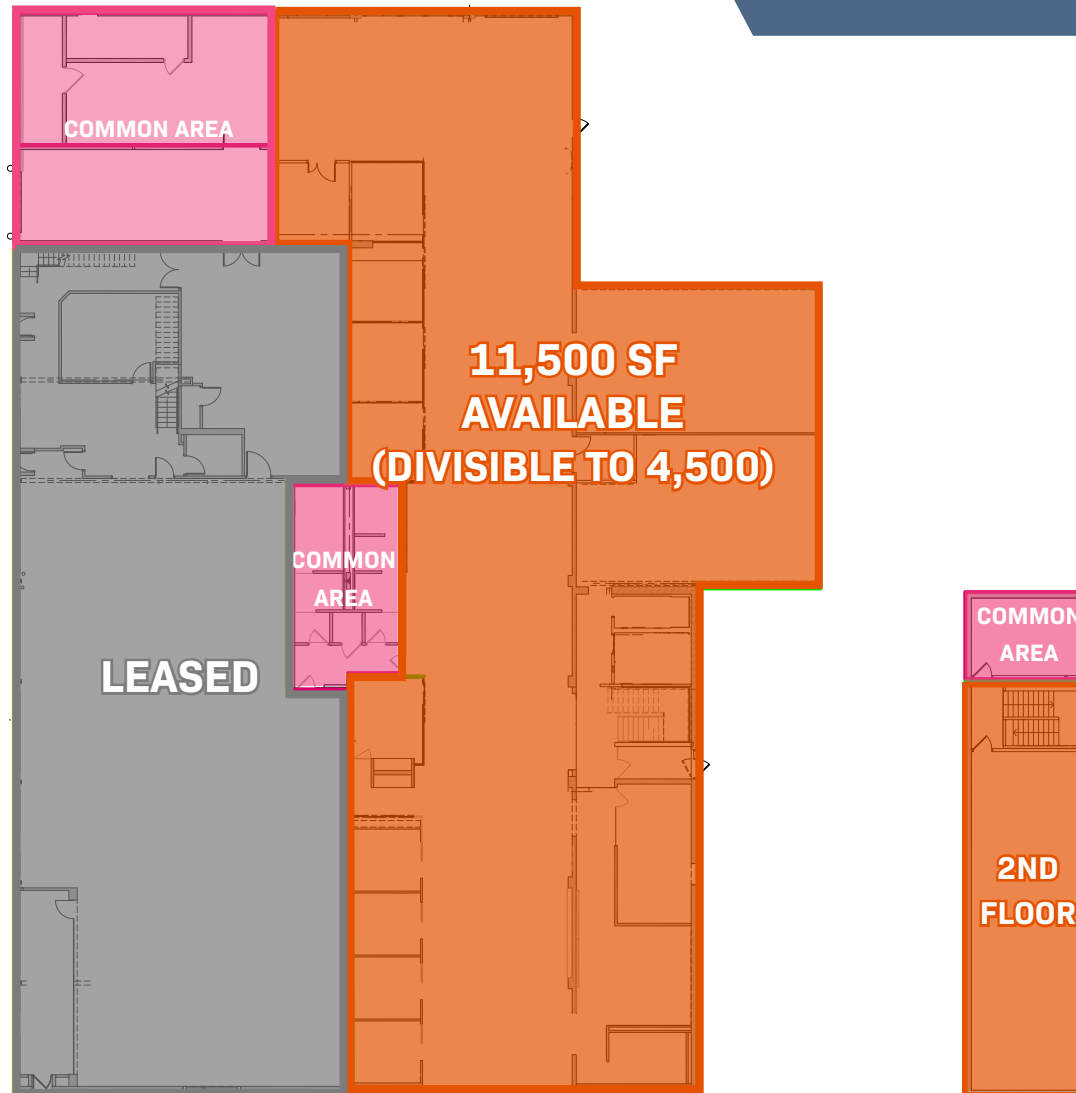
Executive Vice President
+1 312 334 7201
larry.goldwasser@cbre.com

CBRE

FLOOR PLAN



Timber Loft Build-Out Ideal for Office & Flex Space



2324 W FULTON STREET, CHICAGO

Matt Cowie

Senior Vice President
+1 312 334 7203
matt.cowie@cbre.com

John Marks

Senior Associate
+1 312 334 7204
john.marks@cbre.com

Larry Goldwasser, SIOR

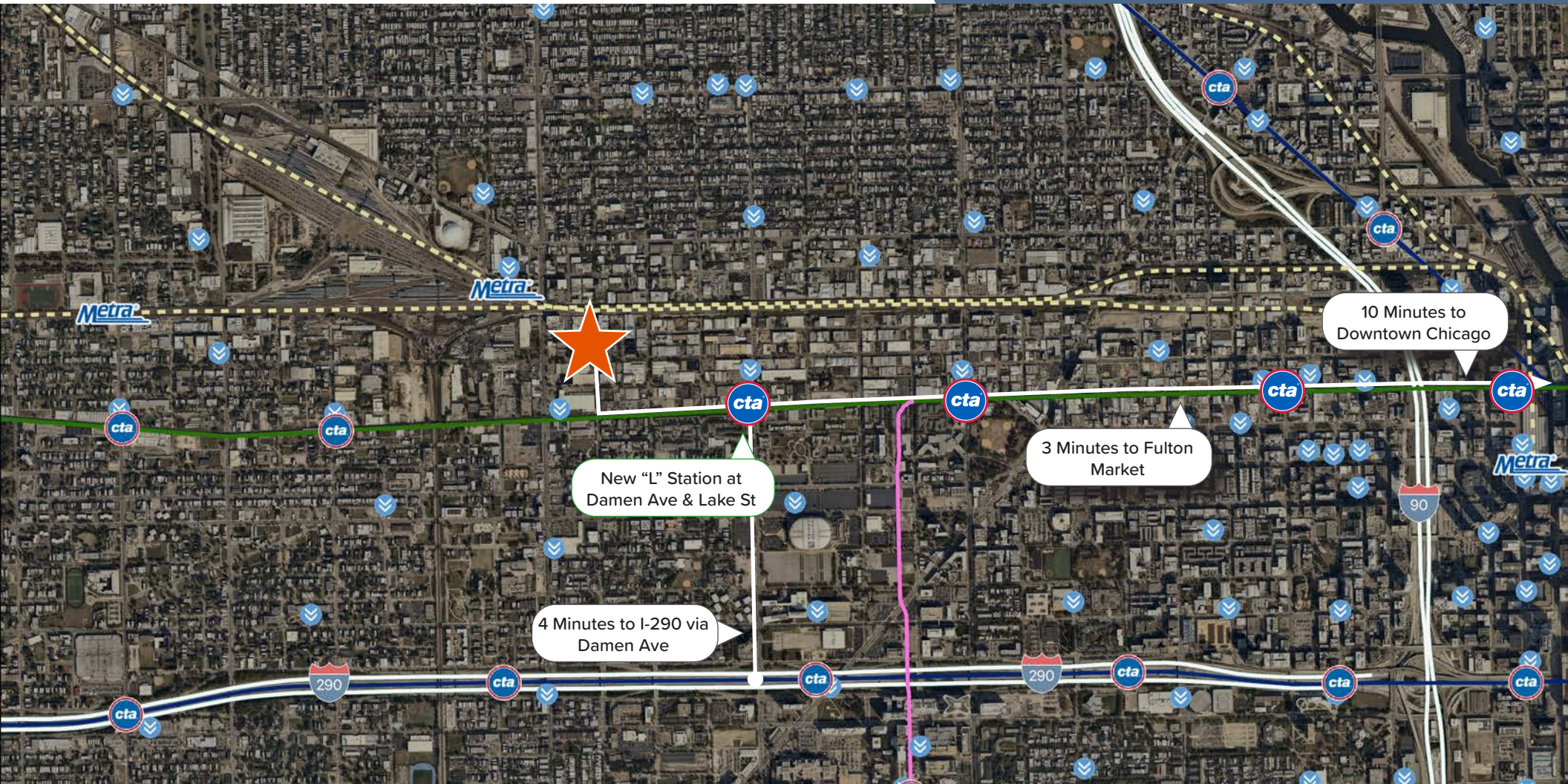
Executive Vice President
+1 312 334 7201
larry.goldwasser@cbre.com

CBRE

ACCESS MAP



Offering Exceptional Access to Public Transportation, Expressways & Downtown Chicago



2324 W FULTON STREET, CHICAGO

Matt Cowie

Senior Vice President
+1 312 334 7203
matt.cowie@cbre.com

John Marks

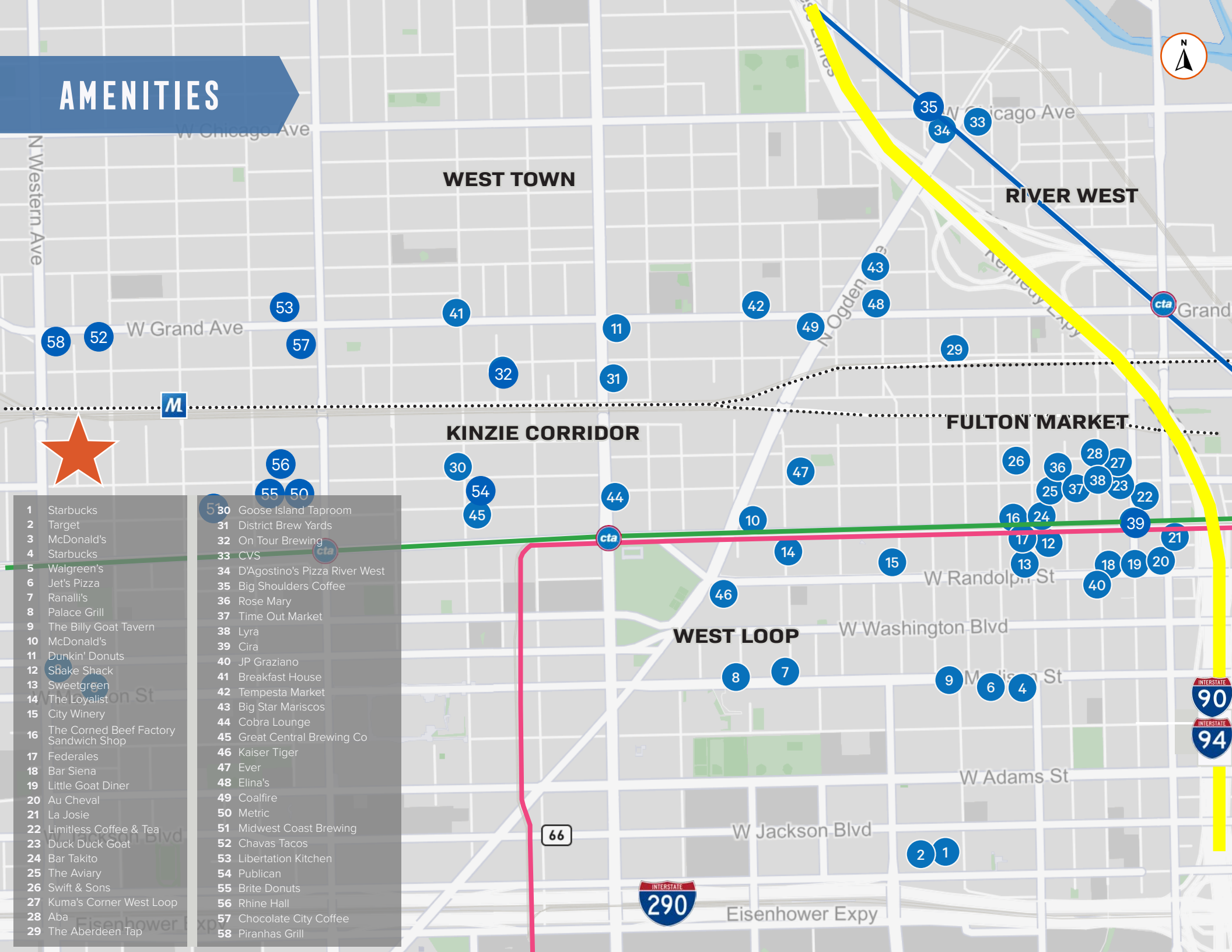
Senior Associate
+1 312 334 7204
john.marks@cbre.com

Larry Goldwasser, SIOR

Executive Vice President
+1 312 334 7201
larry.goldwasser@cbre.com

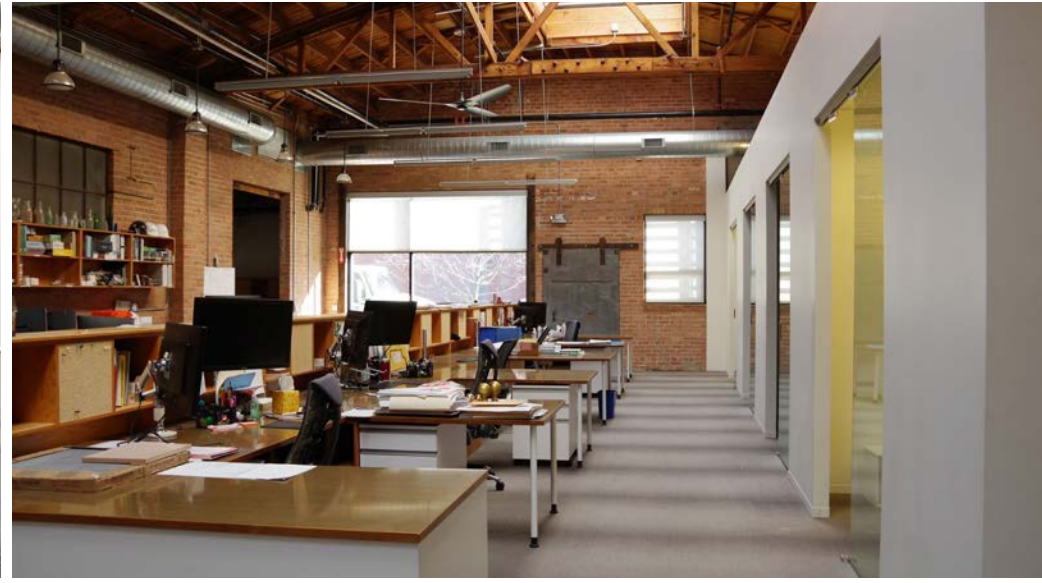


AMENITIES



- 1 Starbucks
- 2 Target
- 3 McDonald's
- 4 Starbucks
- 5 Walgreen's
- 6 Jet's Pizza
- 7 Ranalli's
- 8 Palace Grill
- 9 The Billy Goat Tavern
- 10 McDonald's
- 11 Dunkin' Donuts
- 12 Shake Shack
- 13 Sweetgreen
- 14 The Loyalist
- 15 City Winery
- 16 The Corned Beef Factory Sandwich Shop
- 17 Federales
- 18 Bar Siena
- 19 Little Goat Diner
- 20 Au Cheval
- 21 La Josie
- 22 Limitless Coffee & Tea
- 23 Duck Duck Goat
- 24 Bar Takito
- 25 The Aviary
- 26 Swift & Sons
- 27 Kuma's Corner West Loop
- 28 Aba
- 29 The Aberdeen Tap
- 30 Goose Island Taproom
- 31 District Brew Yards
- 32 On Tour Brewing
- 33 CVS
- 34 D'Agostino's Pizza River West
- 35 Big Shoulders Coffee
- 36 Rose Mary
- 37 Time Out Market
- 38 Lyra
- 39 Cira
- 40 JP Graziano
- 41 Breakfast House
- 42 Tempesta Market
- 43 Big Star Mariscos
- 44 Cobra Lounge
- 45 Great Central Brewing Co
- 46 Kaiser Tiger
- 47 Ever
- 48 Elina's
- 49 Coalfire
- 50 Metric
- 51 Midwest Coast Brewing
- 52 Chavas Tacos
- 53 Liberation Kitchen
- 54 Publican
- 55 Brite Donuts
- 56 Rhine Hall
- 57 Chocolate City Coffee
- 58 Piranhas Grill

PHOTOS



2324 W FULTON STREET, CHICAGO

Matt Cowie

Senior Vice President
+1 312 334 7203
matt.cowie@cbre.com

John Marks

Senior Associate
+1 312 334 7204
john.marks@cbre.com

Larry Goldwasser, SIOR

Executive Vice President
+1 312 334 7201
larry.goldwasser@cbre.com

CBRE



FOR MORE INFORMATION PLEASE CONTACT:

Matt Cowie

Senior Vice President
+1 312 334 7203
matt.cowie@cbre.com

John Marks

Senior Associate
+1 312 334 7204
john.marks@cbre.com

Larry Goldwasser, SIOR

Executive Vice President
+1 312 334 7201
larry.goldwasser@cbre.com

©2025 CBRE, Inc. All rights reserved. This information has been obtained from sources believed reliable, but has not been verified for accuracy or completeness. You should conduct a careful, independent investigation of the property and verify all information. Any reliance on this information is solely at your own risk. CBRE and the CBRE logo are service marks of CBRE, Inc. All other marks displayed on this document are the property of their respective owners, and the use of such logos does not imply any affiliation with or endorsement of CBRE. Photos herein are the property of their respective owners. Use of these images without the express written consent of the owner is prohibited. PMStudio_April2022

CBRE