

FOR SALE | **2,476 SF**



1130 S SAN JOSE

Mesa, AZ 85202



Recently Remodeled Childcare Center

PROPERTY HIGHLIGHTS

Cushman & Wakefield is pleased to present 1130 San Jose, Mesa, Arizona, a fully remodeled $\pm 2,476$ SF childcare facility available for immediate occupancy. This turnkey property is designed to support smooth day-to-day operations for an owner-user.

The building features modern classrooms with child-safe finishes, upgraded systems, staff support areas, and dedicated drop-off/pick-up zones. Outdoor play areas are currently under construction, with planned improvements that will further enhance safety and functionality for children.

With strong local demand and limited supply of quality childcare space, 1130 San Jose offers operators an ideal platform to launch or expand their program quickly. The facility provides a rare opportunity to step into a purpose-built space in a well-established Mesa neighborhood.

- **100% Available and Ready for Immediate Occupancy**
- **Zoned for Childcare Use**
- **Ample Parking**
- **Outdoor Play Area Improvements Underway**



PROPERTY OVERVIEW

Sale Price:	\$1,100,000
Address:	1130 S San Jose, Mesa, AZ 85202
Building SF:	2,476 SF
Land Acreage:	0.29 AC
Parking Ratio:	8.08/1,000 SF
Stories:	1
Year Built/Renovated:	1980/2025
Zoning:	RM-4/PUC 29-11
Parcel Number:	134-42-395F



TURNKEY CHILDCARE FACILITY



RENOVATED IN 2025

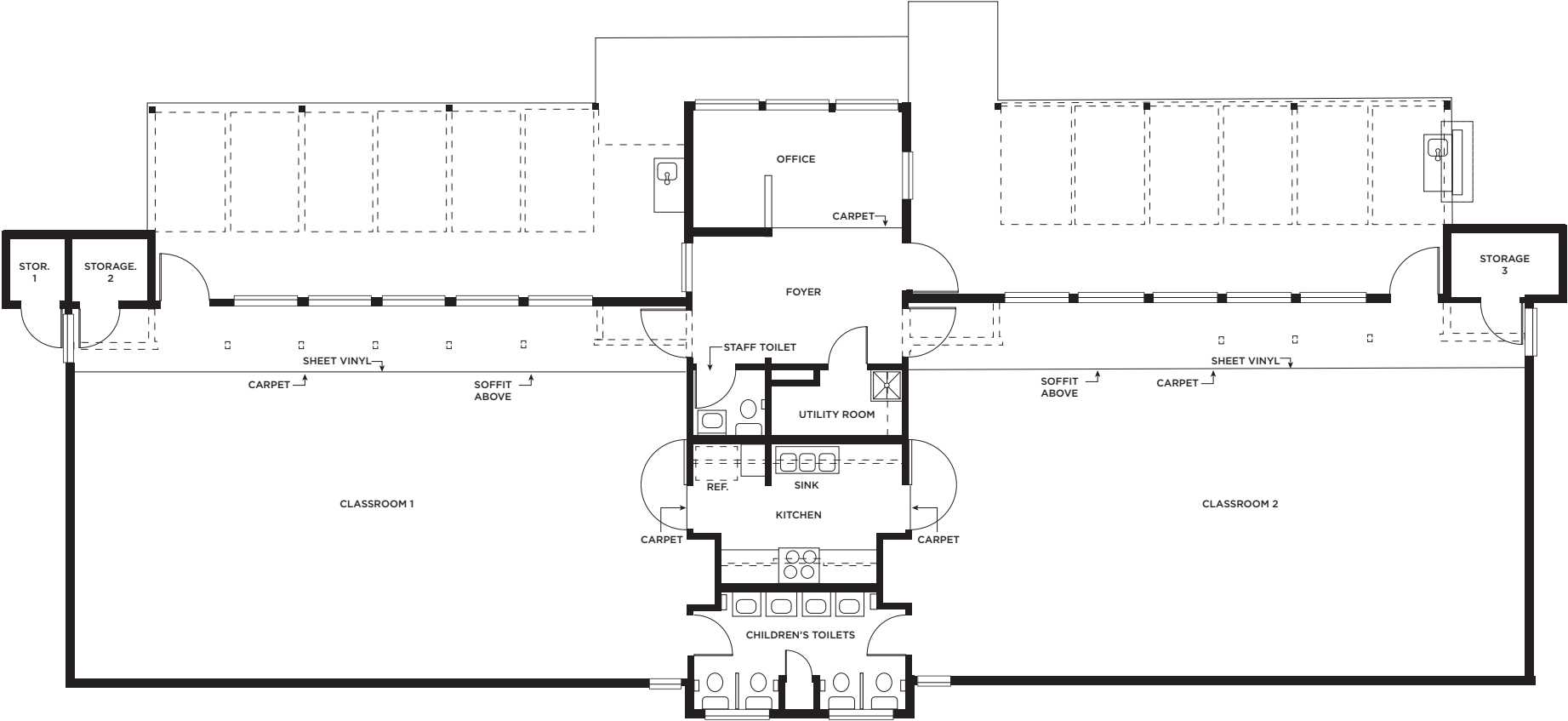


**STEPS FROM BANNER DESERT
MEDICAL CENTER**



OUTDOOR PLAY AREA IMPROVEMENTS UNDERWAY

FLOOR PLAN





PROPERTY
PHOTOS





AMENITIES MAP



FOR SALE

ALEXANDRA LOYE

Executive Managing Director
+1 602 229 5957
alexandra.loye@cushwake.com

PAIGE BLANZY

Associate
+1 602 224 4484
paige.blanzky@cushwake.com

2555 East Camelback Road, Suite 400
Phoenix, Arizona 85016
+1 602 954 9000
cushmanwakefield.com



©2025 Cushman & Wakefield. All rights reserved. The information contained in this communication is strictly confidential. This information has been obtained from sources believed to be reliable but has not been verified. NO WARRANTY OR REPRESENTATION, EXPRESS OR IMPLIED, IS MADE AS TO THE CONDITION OF THE PROPERTY (OR PROPERTIES) REFERENCED HEREIN OR AS TO THE ACCURACY OR COMPLETENESS OF THE INFORMATION CONTAINED HEREIN, AND SAME IS SUBMITTED SUBJECT TO ERRORS, OMISSIONS, CHANGE OF PRICE, RENTAL OR OTHER CONDITIONS, WITHDRAWAL WITHOUT NOTICE, AND TO ANY SPECIAL LISTING CONDITIONS IMPOSED BY THE PROPERTY OWNER(S). ANY PROJECTIONS, OPINIONS OR ESTIMATES ARE SUBJECT TO UNCERTAINTY AND DO NOT SIGNIFY CURRENT OR FUTURE PROPERTY PERFORMANCE.