



For Lease

±82,855 SF
Manufacturing/
Distribution Space

6155 S. Harlem Avenue

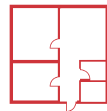
Chicago, Illinois 60638



24 FOOT
CLEAR HEIGHT



HEAVY POWER
6,300A @ 480V



±8,130 SF OF
OFFICE SPACE



QUICK ACCESS TO I-55
VIA HARLEM AVENUE



22 TRAILER STALLS
(EXPANDABLE)



12 DOCKS W/LOCKS
/ 4 DRIVE-IN DOORS



LED LIGHTING
IN WAREHOUSE



4 MILES TO/FROM
MIDWAY INT'L AIRPORT

Contact

Packy Doyle

+1 630 691 0601
pdoyle@hiffman.com

Alex Sutterer

+1 630 693 0644
asutterer@hiffman.com

One Oakbrook Terrace
Suite 400

Oakbrook Terrace, Illinois 60181
+1 630 932 1234

hiffman.com

NO WARRANTY OR REPRESENTATION, EXPRESS OR IMPLIED, IS MADE AS TO THE ACCURACY OF THE INFORMATION CONTAINED HEREIN, AND THE SAME IS SUBMITTED SUBJECT TO ERRORS, OMISSIONS, CHANGE OF PRICE, RENTAL OR OTHER CONDITIONS, PRIOR SALE, LEASE OR FINANCING, OR WITHDRAWAL WITHOUT NOTICE, AND OF ANY SPECIAL LISTING CONDITIONS IMPOSED BY OUR PRINCIPALS NO WARRANTIES OR REPRESENTATIONS ARE MADE AS TO THE CONDITION OF THE PROPERTY OR ANY HAZARDS CONTAINED THEREIN ARE ANY TO BE IMPLIED.

6155 S. HARLEM AVENUE, CHICAGO, IL | **FOR LEASE**

SPECIFICATIONS

BUILDING SIZE:	±82,855 SF
SITE SIZE:	±4.36 AC
CLEAR HEIGHT:	24'
OFFICE SIZE:	±8,130 SF
TRAILER PARKING:	22 Stalls (expandable)
CAR PARKING:	46 Spaces (expandable)
DOCKS:	12 Exterior with dock locks
DRIVE-IN DOORS:	4
POWER:	6,300 Amps @ 480 Volts
BAY SIZE:	35' x 35'
DISTRICT:	Ward 13; Alderman Marty Quinn



EXISTING SPACE NOTES

- LED warehouse lighting
- Wash bay with floor drains
- Mens / womens locker rooms

COMPLETED IMPROVEMENTS

- Office improvements - paint, carpet, LED lights, new restrooms
- Full exterior overhaul - exterior paint, new landscaping, new parking lot
- Overhaul of HVAC equipment
- Grade and compaction of outside trailer parking outside storage areas
- New energy efficient roof; 60 mil TPO with a 20 year warranty (2023)
- Replaced / upgraded dock packages

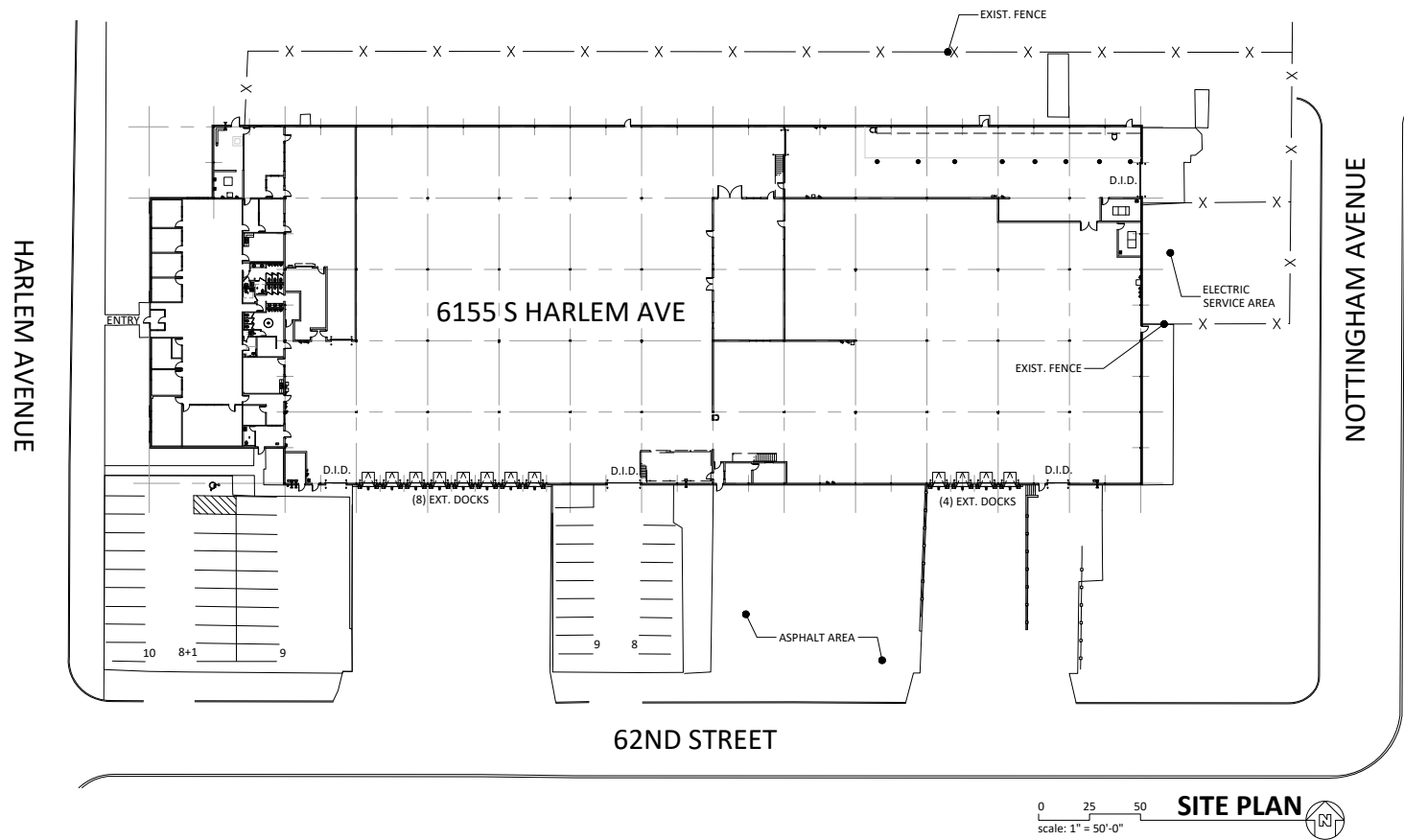


±82,855 SF
Manufacturing/
Distribution Space



SITE PLAN

All existing interior warehouse walls are non-structured and can be removed as needed.



Updated Office



KEY DISTANCES

 ±1.3 MILES TO I-55

 ±3.5 MILES TO I-294

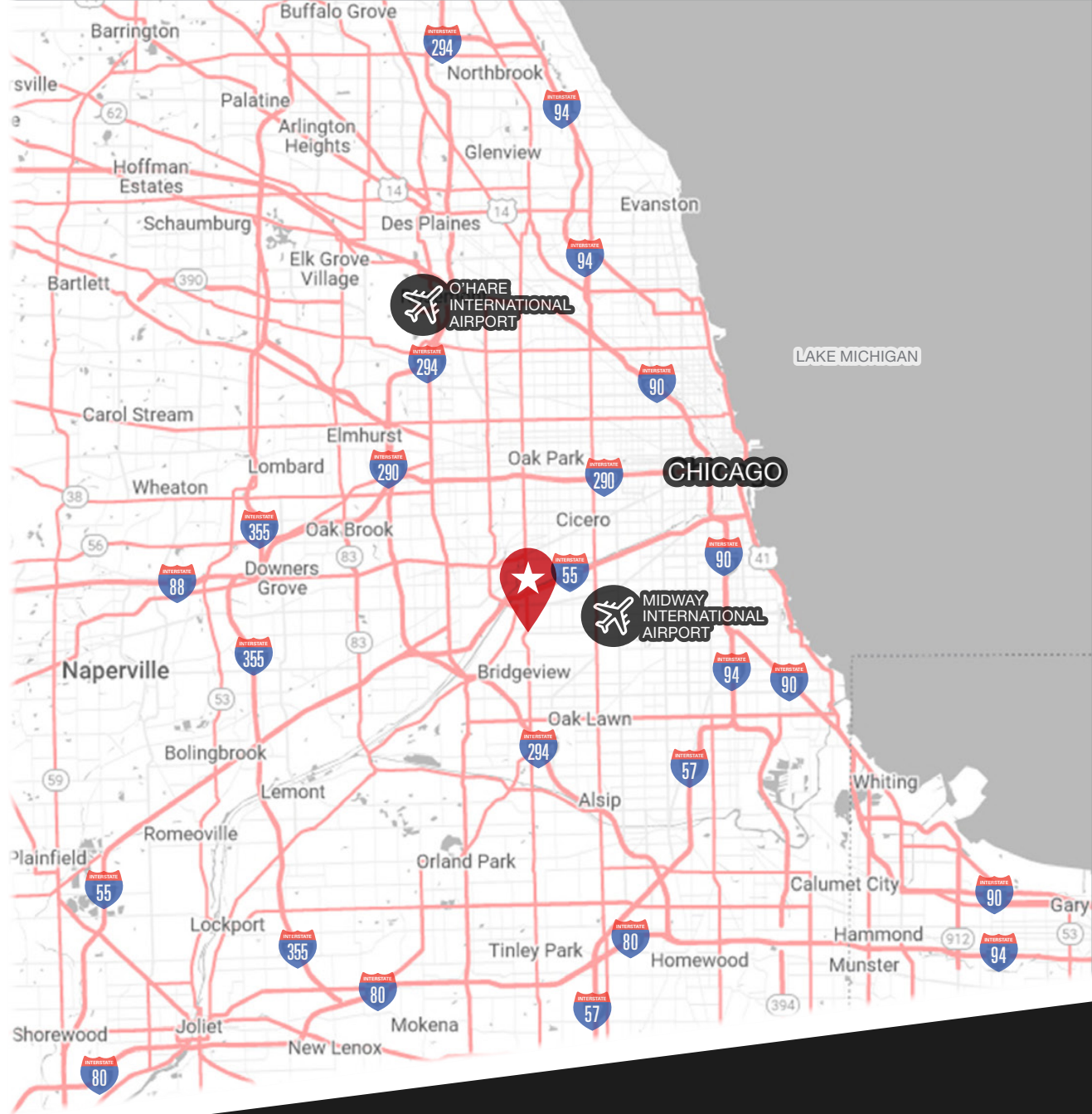
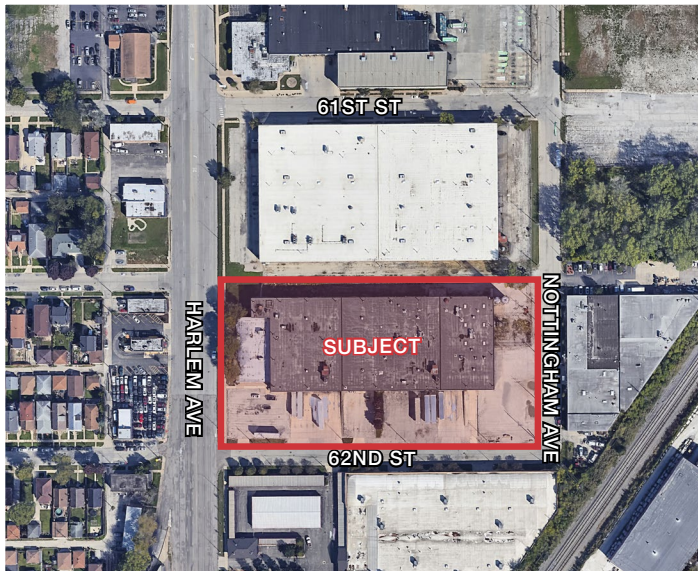
 ±6.5 MILES TO I-290

 ±14.0 MILES TO I-57

 ±19.0 MILES TO I-80

 ±4 MILES TO MIDWAY INT'L AIRPORT

 ±11 MILES TO DOWNTOWN CHICAGO



Institutionally Owned & Managed



One Oakbrook Terrace
Suite 400
Oakbrook Terrace, Illinois 60181
+1 630 932 1234

hiffman.com