



## Greenwich Centre

192 Ballard Court

Virginia Beach, Virginia 23462

### Property Highlights

- Class A Office Space
- Centrally located with convenient interstate access
- Potential for pylon and building signage
- Excellent Parking ratio
- Renovated Lobby and Restrooms
- Suites with flexible layouts and great window line

### Building Summary

Lease Rate:	\$22.50/ RSF, Full Service
Building Size:	57,643 RSF
Available Suites:	1,340 RSF - 3,350 RSF

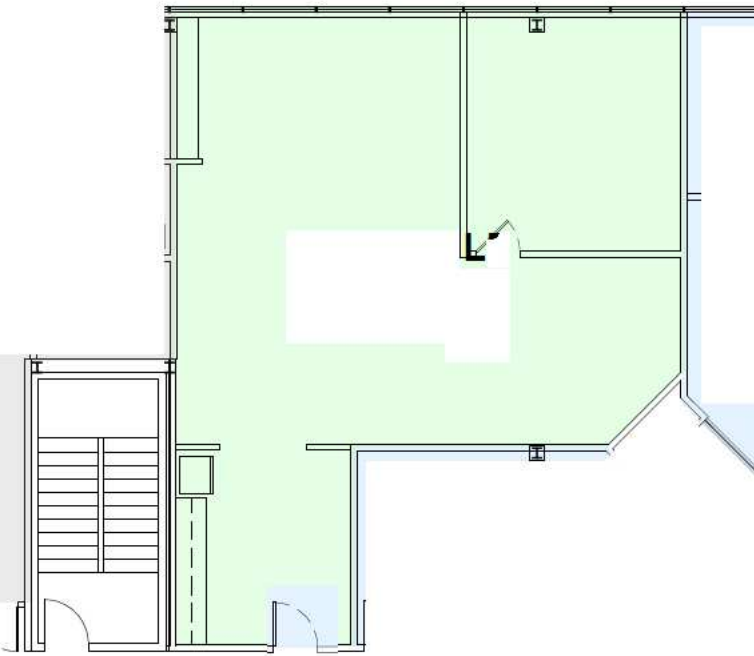
### For More Information

#### Matt Wilbricht

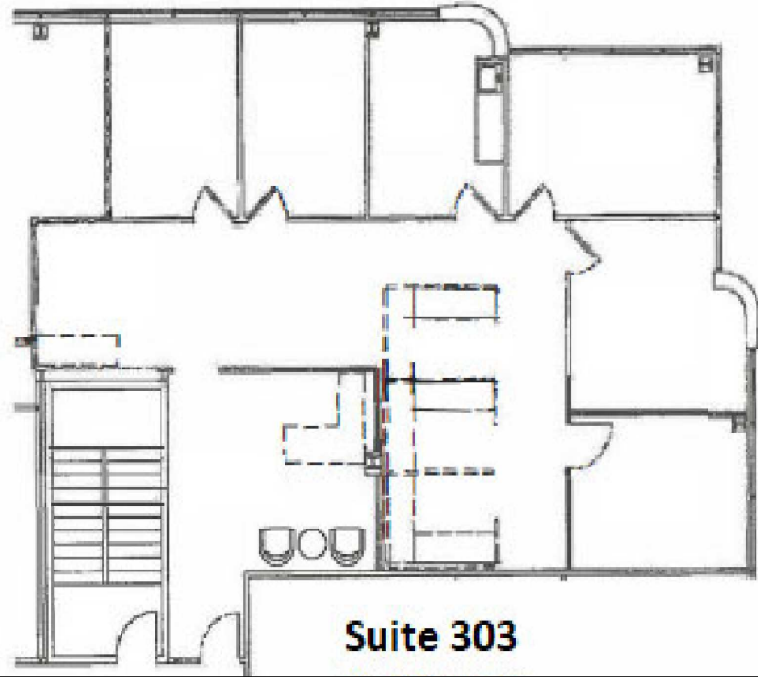
Executive Vice President, Principal

C: 757 270 6956

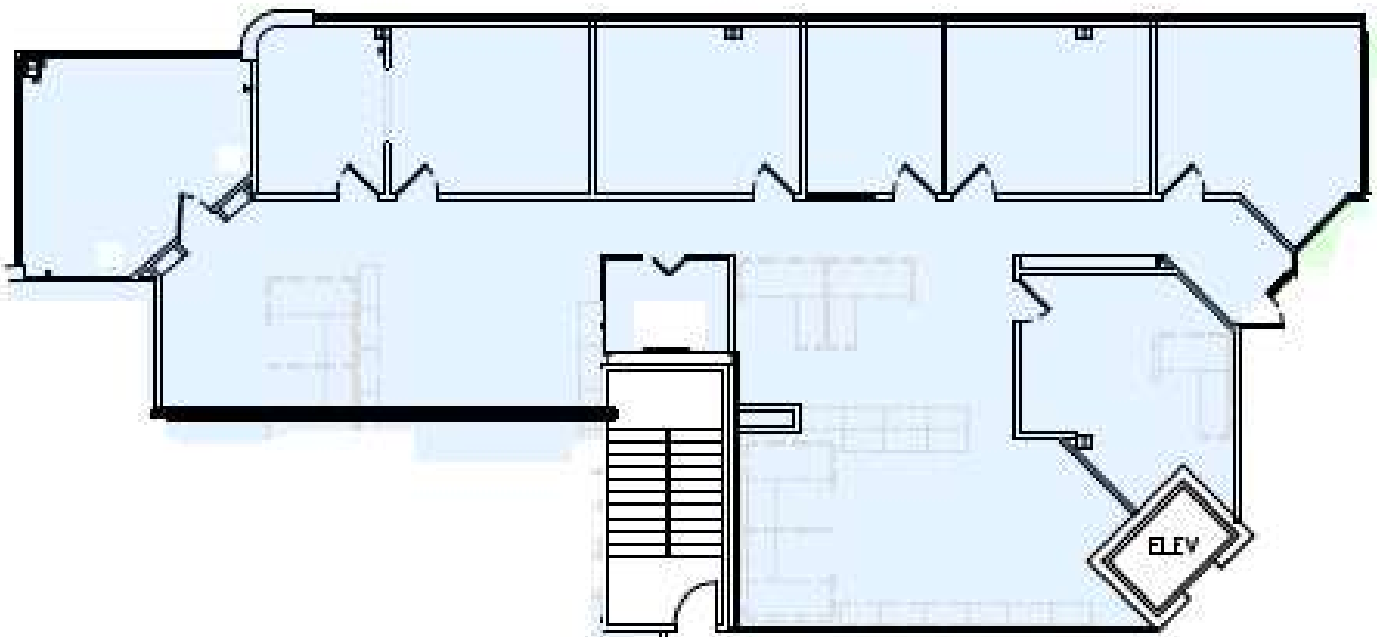
[mattwilbricht@naidominion.com](mailto:mattwilbricht@naidominion.com)



Suite 210- 1,340 RSF

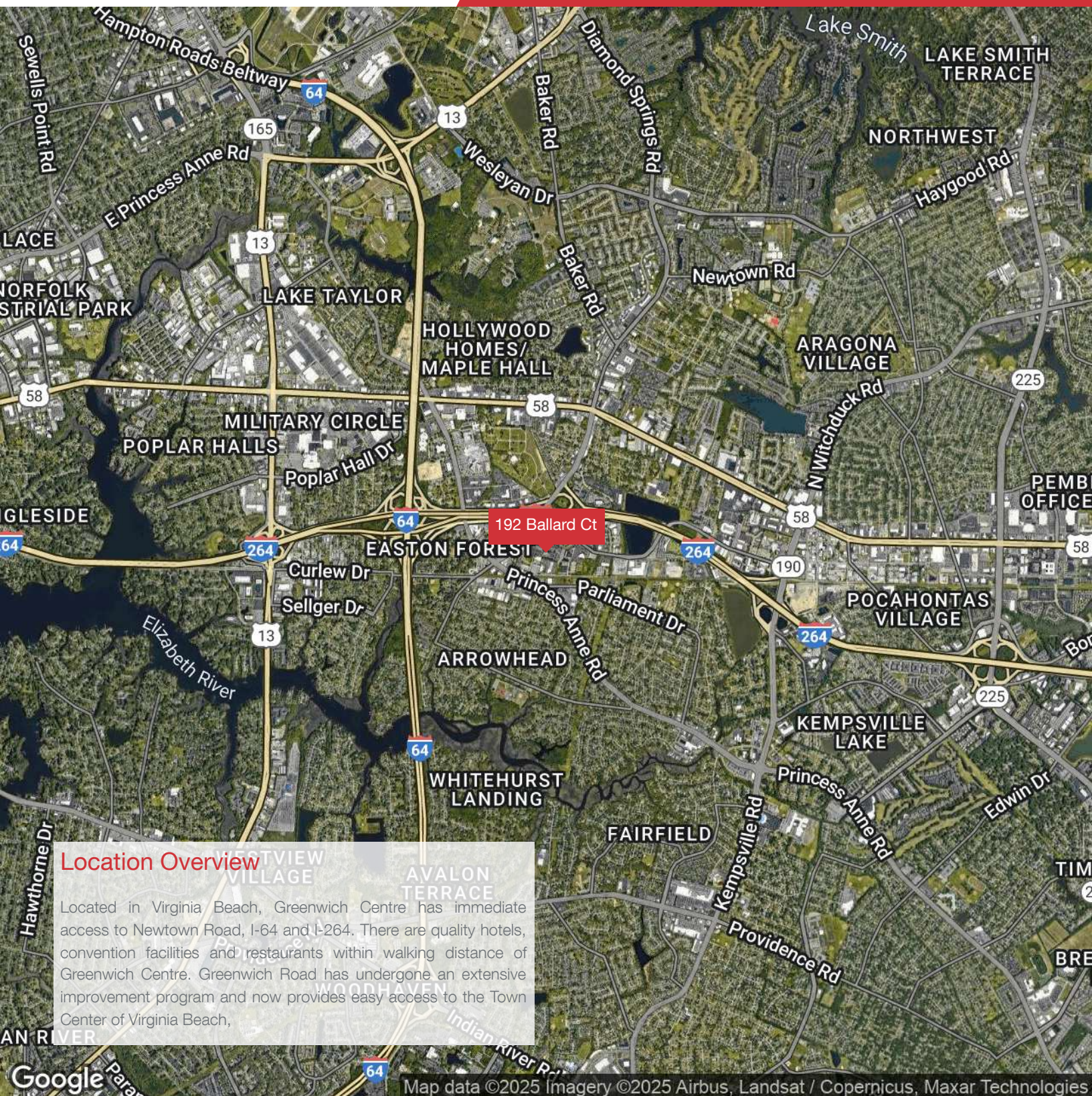


Suite 303- 1,950 RSF



Suite 403- 3,350 RSF





Map data ©2025 Imagery ©2025 Airbus, Landsat / Copernicus, Maxar Technologies