

AVAILABLE OFFICE SPACE FOR LEASE IN PLEASANTON, CA

- **PROPERTY ADDRESS:** 5758 WEST LAS POSITAS BLVD, PLEASANTON, CA
- **AVAILABLE SPACE:** TWO FURNISHED OFFICE SUITES TOTALING $\pm 6,300$ SF
- **LEASE OPTIONS:** SUITE 1 ($\pm 2,300$ SF), SUITE 2 ($\pm 4,000$ SF), OR BOTH TOGETHER
- **AVAILABILITY:** IMMEDIATE
- **TYPE:** PROFESSIONAL OFFICE SPACE WITH FLEXIBLE CONFIGURATIONS

PLEASANTON OFFERS AN IDEAL LOCATION FOR BUSINESSES SEEKING OFFICE SPACE IN THE BAY AREA. WITH ITS PROXIMITY TO MAJOR HIGHWAYS AND BART, COMPANIES ENJOY CONVENIENT ACCESS TO SAN FRANCISCO, OAKLAND, AND SILICON VALLEY WHILE BENEFITING FROM A LOWER COST OF OPERATIONS COMPARED TO CORE URBAN CENTERS.



TABLE OF CONTENTS

6 THE OFFERING

7 PROPERTY FACTS

8 PROPERTY DESCRIPTION

9 PROPERTY PHOTOS

16 FLOOR PLANS



EXCLUSIVE CONTACT

Dominic D. Dutra

Chief Executive Officer

+1 510 366 9931

ddutra@3dstrategies.com

VICINITY MAP | SAN FRANCISCO BAY AREA



VICINITY MAP | CITY OF PLEASANTON



PORTFOLIO VIDEO PRESENTATION



[WATCH THE VIDEO: Click Here](#)

THE OFFERING



Dutra Enterprises, Inc., has been retained as the exclusive agent for the lease of the 2 suites office space located in Pleasanton, CA ("Property").

The Property comprises a total of 6,300 square feet strategically located in the city of Pleasanton, one of the most dynamic communities in the San Francisco Bay Area. Pleasanton Ranks #2 in Quality of Life Nationally. Pleasanton has ranked #2 in the nation in quality of life on the U.S. Social Progress Map, which measures outcomes that directly impact daily life, including safety, health, education, and access to opportunity. This offering includes 2 available suites:

Suite 1 – ±2,300 SF

Private Offices	4 (±144 SF each, furnished)
Executive Office	1 (±204 SF, furnished)
Conference Room	1 (±144 SF, furnished; tenant's sole use)
Bullpen	±1,334 SF with 8 cubicles
Kitchenette	Includes sink
Security	Card-reader secured corridor access

Suite 2 – ±4,000 SF

Private Offices	5 (±144 SF each, furnished)
Executive Office	1 (±288 SF, furnished)
Conference Rooms	2 small (±144 SF each) + 1 large (±216 SF), furnished; tenant's sole use
Bullpen	±2,233 SF with 16 cubicles
Storage Room	Dedicated to suite
Security	Card-reader secured corridor access

PROPERTY FACTS



BUILDING AMENITIES

- Receptionist on-site (8 AM–4 PM)
- Both suites are fully furnished
- Four shared, fully furnished conference rooms (scheduled through receptionist)
- Men's & Women's restrooms on both floors, plus all-gender restroom
- Single-occupancy restroom with shower
- Security cameras in parking lot and entrances

LOCATION OVERVIEW

- Centrally located in Pleasanton, a premier Tri-Valley business hub
- Easy access to I-680 and I-580 freeways
- Proximity to BART, ACE Train, and major corporate campuses (Workday, Oracle, Kaiser)
- Walkable and short drive to retail, dining, and services

PROPERTY DESCRIPTION

5758 West Las Positas Blvd.



Located at 5758 West Las Positas in Pleasanton, this professional office building offers flexible leasing options with fully furnished suites designed to support productivity and growth. Suite 1 ($\pm 2,300$ SF) and Suite 2 ($\pm 4,000$ SF) each feature private executive offices, dedicated conference rooms, spacious bullpens with cubicles, and kitchenettes, all secured with card-reader access for added security.

Tenants also benefit from on-site reception services, ample conference space, convenient parking, and modern restroom facilities, including all-gender and shower-equipped options. With the ability to lease either suite individually or combine them for maximum space, businesses can enjoy a turnkey office solution in a highly desirable Pleasanton location.

PROPERTY PHOTOS

5758 West Las Positas Blvd.

3D
STRATEGIES 



PROPERTY PHOTOS

5758 West Las Positas Blvd. | Common Areas

3D
STRATEGIES 



PROPERTY PHOTOS

5758 West Las Positas Blvd. | Common Areas

3D
STRATEGIES 



PROPERTY PHOTOS

5758 West Las Positas Blvd. | Suite 1

3D
STRATEGIES 



PROPERTY PHOTOS

5758 West Las Positas Blvd. | Suite 1

3D
STRATEGIES 



PROPERTY PHOTOS

5758 West Las Positas Blvd. | Suite 2

3D
STRATEGIES 



PROPERTY PHOTOS

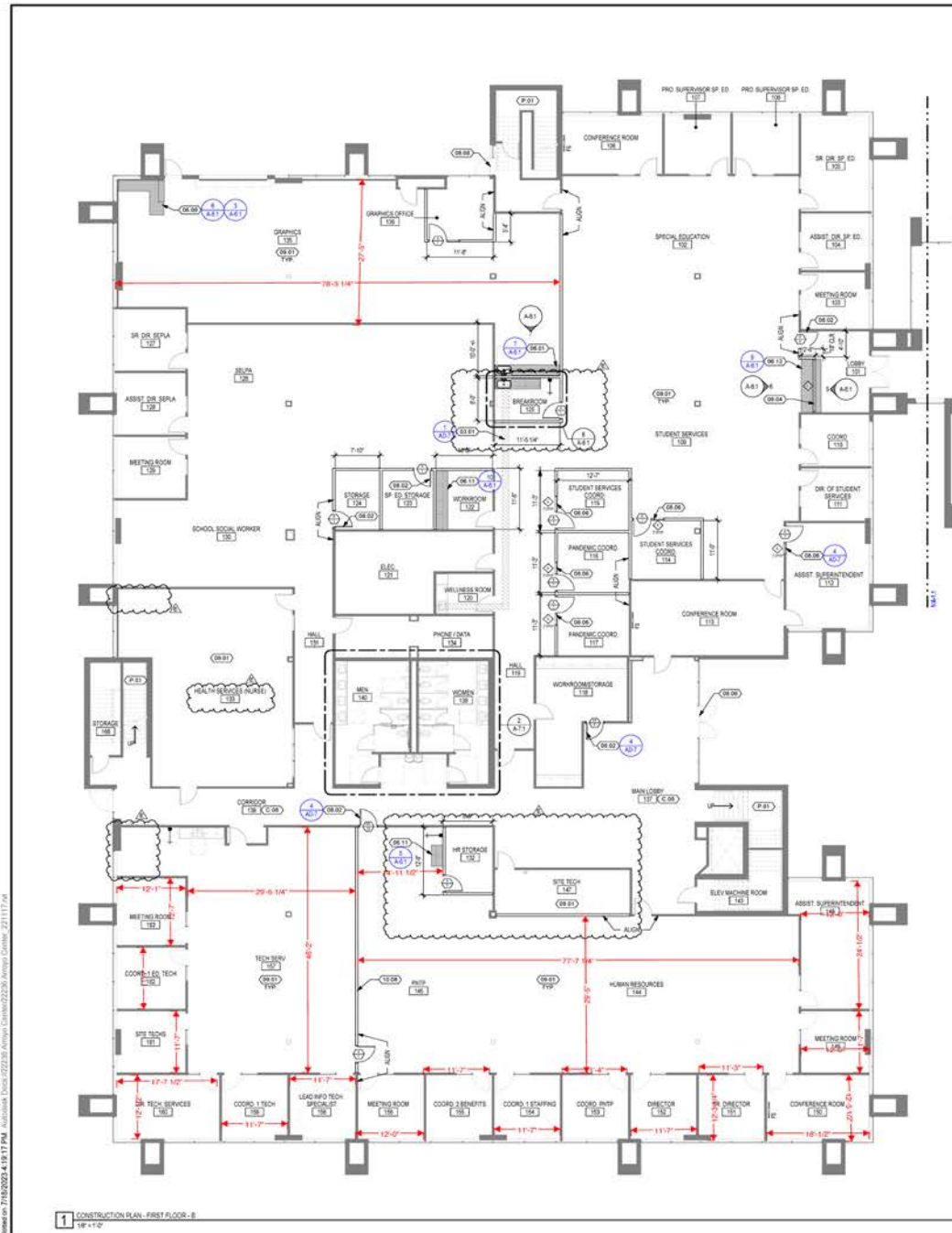
5758 West Las Positas Blvd. | Suite 2

3D
STRATEGIES 



5758 West Las Positas Blvd. | Dimensioned First Floor Plan

3D
STRATEGIES



4LEAF, INC.
Building
08-03-2023
Reviewed for
Code Compliance

[illegible]

03.01	NEW MFLT CONC. SLAB	
03.02	NEW CASEWORK AND COUNTERTOP. SEE CASEWORK ELEVATIONS AND DETAILS	
03.03	NEW CASEWORK DESIGN. SEE CASEWORK ELEVATIONS AND DETAILS	
03.11	UPPER AND LOWER CASEWORK WITH NO BACKSPLASH. SEE CASEWORK ELEVATIONS AND DETAILS	
03.12	NEW CASEWORK AND SERVICE COUNTERTOP. SEE CASEWORK ELEVATIONS AND DETAILS	
04.01	NEW DOOR AND DOOR FRAME. SEE DOOR SCHEDULE	
04.02	NEW PASS-THROUGH DOOR. SEE WINDOW TYPES	
04.03	NEW DOOR AND DOOR FRAME. SEE DOOR SCHEDULE	
04.04	NEW DOOR AND DOOR FRAME COMPLIANT ALUMINUM. SEE DOOR SCHEDULE	
04.05	NEW DOOR AND DOOR FRAME COMPLIANT ALUMINUM. SEE DOOR SCHEDULE	
04.06	NEW FLOORING. SEE FRESH PAINT & FINISH SCHEDULE	
04.08	NEW FLOORING. SEE FRESH PAINT & FINISH SCHEDULE	
C-08	CONTRACTOR SHALL INSPECT EXISTING 1"X4" CORROSION CORROSION AND REPAIRS TO ALL EXISTING ELECTRICAL, DATA, PHONE, SECURITY OR OTHER CONTROL SYSTEMS AND/OR CONDUITS. ALL NEW ELECTRICAL SHALL BE CONSTRUCTED IN COMPLIANCE WITH ALL 1-HOUR RATING REQUIREMENTS	
P-01	EXISTING NON-CORROSPING STAIRS, TECHNICALLY INFEASIBLE REPAIRS TO	

EXPLAN



PROJECT ISSUE DATE: 2022/12/21		
DATE	NO.	REVISIONS
2022/12/21		PLAN CHECK SUBMITTAL
2023/01/31		PLAN CHECK RESUBMITTAL
2023/02/09		BID DOCUMENTS
2023/05/02	A	CDD NO. 1
2023/07/19	B	PLAN CHECK REVISION NO. 2

[illegible]

Table 1

REVIEWER: BHWL
DISK JOB NO: 20226

NET TIME

CONSTRUCTION PLAN -

FIRST FLOOR - B

Abstract

0877-9684

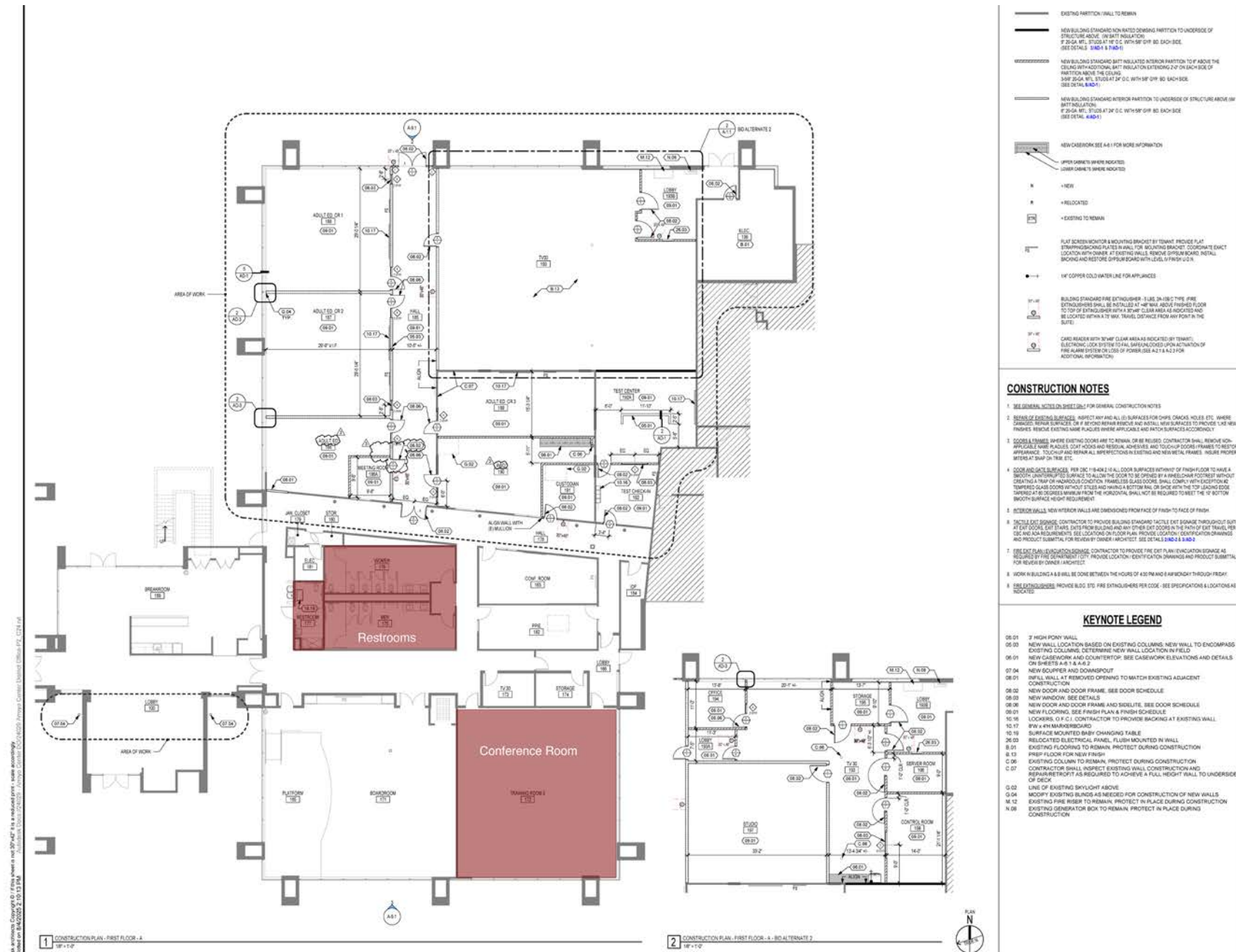
112

A-1.2

FLOOR PLANS

5758 West Las Positas Blvd. | Amenities Plan First Floor A

3D
STRATEGIES



Pleasanton
UNIFIED SCHOOL DISTRICT

cdsk
CONSULTANTS
1800 Harrison Street, Suite 100, Pleasanton, CA 94566
1-916-888-8800
1-916-888-8800
1800 Harrison Street, Suite 100, San Francisco, CA 94103
1-415-888-8800
1800 Harrison Street, Suite 100, San Jose, CA 95128
1-408-435-4300
1800 Harrison Street, Suite 100, Los Angeles, CA 90001
1-310-294-5551 / 1-415-638-7864

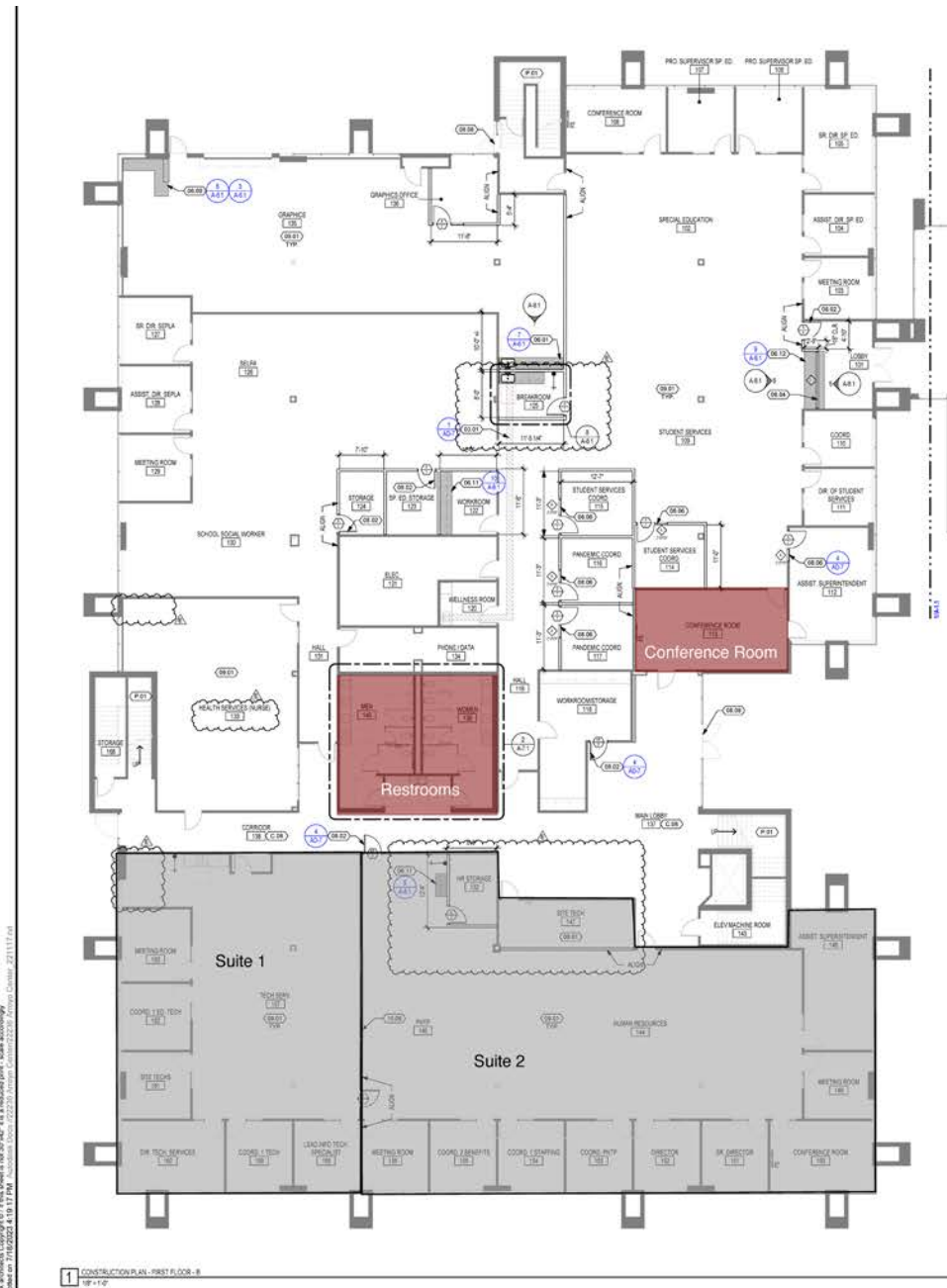
PROJECT NAME
DISTRICT OFFICE
PROJECT AT ARROYO CENTER PHASE 2

PROJECT INFO
PROJECT NO.
5758 W LAS POSITAS BLVD
PLEASANTON, CA 94566
KEYNOTE

DATE	NO.	REVISIONS
2024-10-09	1	PLAN CHECK - A-1, A-2, A-3, A-4, A-5, A-6, A-7, A-8, A-9, A-10, A-11, A-12, A-13, A-14, A-15, A-16, A-17, A-18, A-19, A-20, A-21, A-22, A-23, A-24, A-25, A-26, A-27, A-28, A-29, A-30, A-31, A-32, A-33, A-34, A-35, A-36, A-37, A-38, A-39, A-40, A-41, A-42, A-43, A-44, A-45, A-46, A-47, A-48, A-49, A-50, A-51, A-52, A-53, A-54, A-55, A-56, A-57, A-58, A-59, A-60, A-61, A-62, A-63, A-64, A-65, A-66, A-67, A-68, A-69, A-70, A-71, A-72, A-73, A-74, A-75, A-76, A-77, A-78, A-79, A-80, A-81, A-82, A-83, A-84, A-85, A-86, A-87, A-88, A-89, A-90, A-91, A-92, A-93, A-94, A-95, A-96, A-97, A-98, A-99, A-100, A-101, A-102, A-103, A-104, A-105, A-106, A-107, A-108, A-109, A-110, A-111, A-112, A-113, A-114, A-115, A-116, A-117, A-118, A-119, A-120, A-121, A-122, A-123, A-124, A-125, A-126, A-127, A-128, A-129, A-130, A-131, A-132, A-133, A-134, A-135, A-136, A-137, A-138, A-139, A-140, A-141, A-142, A-143, A-144, A-145, A-146, A-147, A-148, A-149, A-150, A-151, A-152, A-153, A-154, A-155, A-156, A-157, A-158, A-159, A-160, A-161, A-162, A-163, A-164, A-165, A-166, A-167, A-168, A-169, A-170, A-171, A-172, A-173, A-174, A-175, A-176, A-177, A-178, A-179, A-180, A-181, A-182, A-183, A-184, A-185, A-186, A-187, A-188, A-189, A-190, A-191, A-192, A-193, A-194, A-195, A-196, A-197, A-198, A-199, A-200, A-201, A-202, A-203, A-204, A-205, A-206, A-207, A-208, A-209, A-210, A-211, A-212, A-213, A-214, A-215, A-216, A-217, A-218, A-219, A-220, A-221, A-222, A-223, A-224, A-225, A-226, A-227, A-228, A-229, A-230, A-231, A-232, A-233, A-234, A-235, A-236, A-237, A-238, A-239, A-240, A-241, A-242, A-243, A-244, A-245, A-246, A-247, A-248, A-249, A-250, A-251, A-252, A-253, A-254, A-255, A-256, A-257, A-258, A-259, A-260, A-261, A-262, A-263, A-264, A-265, A-266, A-267, A-268, A-269, A-270, A-271, A-272, A-273, A-274, A-275, A-276, A-277, A-278, A-279, A-280, A-281, A-282, A-283, A-284, A-285, A-286, A-287, A-288, A-289, A-290, A-291, A-292, A-293, A-294, A-295, A-296, A-297, A-298, A-299, A-300, A-301, A-302, A-303, A-304, A-305, A-306, A-307, A-308, A-309, A-310, A-311, A-312, A-313, A-314, A-315, A-316, A-317, A-318, A-319, A-320, A-321, A-322, A-323, A-324, A-325, A-326, A-327, A-328, A-329, A-330, A-331, A-332, A-333, A-334, A-335, A-336, A-337, A-338, A-339, A-340, A-341, A-342, A-343, A-344, A-345, A-346, A-347, A-348, A-349, A-350, A-351, A-352, A-353, A-354, A-355, A-356, A-357, A-358, A-359, A-360, A-361, A-362, A-363, A-364, A-365, A-366, A-367, A-368, A-369, A-370, A-371, A-372, A-373, A-374, A-375, A-376, A-377, A-378, A-379, A-380, A-381, A-382, A-383, A-384, A-385, A-386, A-387, A-388, A-389, A-390, A-391, A-392, A-393, A-394, A-395, A-396, A-397, A-398, A-399, A-400, A-401, A-402, A-403, A-404, A-405, A-406, A-407, A-408, A-409, A-410, A-411, A-412, A-413, A-414, A-415, A-416, A-417, A-418, A-419, A-420, A-421, A-422, A-423, A-424, A-425, A-426, A-427, A-428, A-429, A-430, A-431, A-432, A-433, A-434, A-435, A-436, A-437, A-438, A-439, A-440, A-441, A-442, A-443, A-444, A-445, A-446, A-447, A-448, A-449, A-450, A-451, A-452, A-453, A-454, A-455, A-456, A-457, A-458, A-459, A-460, A-461, A-462, A-463, A-464, A-465, A-466, A-467, A-468, A-469, A-470, A-471, A-472, A-473, A-474, A-475, A-476, A-477, A-478, A-479, A-480, A-481, A-482, A-483, A-484, A-485, A-486, A-487, A-488, A-489, A-490, A-491, A-492, A-493, A-494, A-495, A-496, A-497, A-498, A-499, A-500, A-501, A-502, A-503, A-504, A-505, A-506, A-507, A-508, A-509, A-510, A-511, A-512, A-513, A-514, A-515, A-516, A-517, A-518, A-519, A-520, A-521, A-522, A-523, A-524, A-525, A-526, A-527, A-528, A-529, A-530, A-531, A-532, A-533, A-534, A-535, A-536, A-537, A-538, A-539, A-540, A-541, A-542, A-543, A-544, A-545, A-546, A-547, A-548, A-549, A-550, A-551, A-552, A-553, A-554, A-555, A-556, A-557, A-558, A-559, A-560, A-561, A-562, A-563, A-564, A-565, A-566, A-567, A-568, A-569, A-570, A-571, A-572, A-573, A-574, A-575, A-576, A-577, A-578, A-579, A-580, A-581, A-582, A-583, A-584, A-585, A-586, A-587, A-588, A-589, A-590, A-591, A-592, A-593, A-594, A-595, A-596, A-597, A-598, A-599, A-600, A-601, A-602, A-603, A-604, A-605, A-606, A-607, A-608, A-609, A-610, A-611, A-612, A-613, A-614, A-615, A-616, A-617, A-618, A-619, A-620, A-621, A-622, A-623, A-624, A-625, A-626, A-627, A-628, A-629, A-630, A-631, A-632, A-633, A-634, A-635, A-636, A-637, A-638, A-639, A-640, A-641, A-642, A-643, A-644, A-645, A-646, A-647, A-648, A-649, A-650, A-651, A-652, A-653, A-654, A-655, A-656, A-657, A-658, A-659, A-660, A-661, A-662, A-663, A-664, A-665, A-666, A-667, A-668, A-669, A-670, A-671, A-672, A-673, A-674, A-675, A-676, A-677, A-678, A-679, A-680, A-681, A-682, A-683, A-684, A-685, A-686, A-687, A-688, A-689, A-690, A-691, A-692, A-693, A-694, A-695, A-696, A-697, A-698, A-699, A-700, A-701, A-702, A-703, A-704, A-705, A-706, A-707, A-708, A-709, A-710, A-711, A-712, A-713, A-714, A-715, A-716, A-717, A-718, A-719, A-720, A-721, A-722, A-723, A-724, A-725, A-726, A-727, A-728, A-729, A-730, A-731, A-732, A-733, A-734, A-735, A-736, A-737, A-738, A-739, A-740, A-741, A-742, A-743, A-744, A-745, A-746, A-747, A-748, A-749, A-750, A-751, A-752, A-753, A-754, A-755, A-756, A-757, A-758, A-759, A-760, A-761, A-762, A-763, A-764, A-765, A-766, A-767, A-768, A-769, A-770, A-771, A-772, A-773, A-774, A-775, A-776, A-777, A-778, A-779, A-780, A-781, A-782, A-783, A-784, A-785, A-786, A-787, A-788, A-789, A-790, A-791, A-792, A-793, A-794, A-795, A-796, A-797, A-798, A-799, A-800, A-801, A-802, A-803, A-804, A-805, A-806, A-807, A-808, A-809, A-810, A-811, A-812, A-813, A-814, A-815, A-816, A-817, A-818, A-819, A-820, A-821, A-822, A-823, A-824, A-825, A-826, A-827, A-828, A-829, A-830, A-831, A-832, A-833, A-834, A-835, A-836, A-837, A-838, A-839, A-840, A-841, A-842, A-843, A-844, A-845, A-846, A-847, A-848, A-849, A-850, A-851, A-852, A-853, A-854, A-855, A-856, A-857, A-858, A-859, A-860, A-861, A-862, A-863, A-864, A-865, A-866, A-867, A-868, A-869, A-870, A-871, A-872, A-873, A-874, A-875, A-876, A-877, A-878, A-879, A-880, A-881, A-882, A-883, A-884, A-885, A-886, A-887, A-888, A-889, A-890, A-891, A-892, A-893, A-894, A-895, A-896, A-897, A-898, A-899, A-900, A-901, A-902, A-903, A-904, A-905, A-906, A-907, A-908, A-909, A-910, A-911, A-912, A-913, A-914, A-915, A-916, A-917, A-918, A-919, A-920, A-921, A-922, A-923, A-924, A-925, A-926, A-927, A-928, A-929, A-930, A-931, A-932, A-933, A-934, A-935, A-936, A-937, A-938, A-939, A-940, A-941, A-942, A-943, A-944, A-945, A-946, A-947, A-948, A-949, A-950, A-951, A-952, A-953, A-954, A-955, A-956, A-957, A-958, A-959, A-960, A-961, A-962, A-963, A-964, A-965, A-966, A-967, A-968, A-969, A-970, A-971, A-972, A-973, A-974, A-975, A-976, A-977, A-978, A-979, A-980, A-981, A-982, A-983, A-984, A-985, A-986, A-987, A-988, A-989, A-990, A-991, A-992, A-993, A-994, A-995, A-996, A-997, A-998, A-999, A-1000, A-1001, A-1002, A-1003, A-1004, A-1005, A-1006, A-1007, A-1008, A-1009, A-1010, A-1011, A-1012, A-1013, A-1014, A-1015, A-1016, A-1017, A-1018, A-1019, A-1020, A-1021, A-1022, A-1023, A-1024, A-1025, A-1026, A-1027, A-1028, A-1029, A-1030, A-1031, A-1032, A-1033, A-1034, A-1035, A-1036, A-1037, A-1038, A-1039, A-1040, A-1041, A-1042, A-1043, A-1044, A-1045, A-1046, A-1047, A-1048, A-1049, A-1050, A-1051, A-1052, A-1053, A-1054, A-1055, A-1056, A-1057, A-1058, A-1059, A-1060, A-1061, A-1062, A-1063, A-1064, A-1065, A-1066, A-1067, A-1068, A-1069, A-1070, A-1071, A-1072, A-1073, A-1074, A-1075, A-1076, A-1077, A-1078, A-1079, A-1080, A-1081, A-1082, A-1083, A-1084, A-1085, A-1086, A-1087, A-1088, A-1089, A-1090, A-1091, A-1092, A-1093, A-1094, A-1095, A-1096, A-1097, A-1098, A-1099, A-1100, A-1101, A-1102, A-1103, A-1104, A-1105, A-1106, A-1107, A-1108, A-1109, A-1110, A-1111, A-1112, A-1113, A-1114, A-1115, A-1116, A-1117, A-1118, A-1119, A-1120, A-1121, A-1122, A-1123, A-1124, A-1125, A-1126, A-1127, A-1128, A-1129, A-1130, A-1131, A-1132, A-1133, A-1134, A-1135, A-1136, A-1137, A-1138, A-1139, A-1140, A-1141, A-1142, A-1143, A-1144, A-1145, A-1146, A-1147, A-1148, A-1149, A-1150, A-1151, A-1152, A-1153, A-1154, A-1155, A-1156, A-1157, A-1158, A-1159, A-1160, A-1161, A-1162, A-1163, A-1164, A-1165, A-1166, A-1167, A-1168, A-1169, A-1170, A-1171, A-1172, A-1173, A-1174, A-1175, A-1176, A-1177, A-1178, A-1179, A-1180, A-1181, A-1182, A-1183, A-1184, A-1185, A-1186, A-1187, A-1188, A-1189, A-1190, A-1191, A-1192, A-1193, A-1194, A-1195, A-1196, A-1197, A-1198, A-1199, A-1200, A-1201, A-1202, A-1203, A-1204, A-1205, A-1206, A-1207, A-1208, A-1209, A-1210, A-1211, A-1212, A-1213, A-1214, A-1215, A-1216, A-1217, A-1218, A-1219, A-1220, A-1221, A-1222, A-1223, A-1224, A-1225, A-1226, A-1227, A-1228, A-1229, A-1230, A-1231, A-1232, A-1233, A-1234, A-1235, A-1236, A-1237, A-1238, A-1239, A-1240, A-1241, A-1242, A-1243, A-1244, A-1245, A-1246, A-1247, A-1248, A-1249, A-1250, A-1251, A-1252, A-1253, A-1254, A-1255, A-1256, A-1257, A-1258, A-1259, A-1260, A-1261, A-1262, A-1263, A-1264, A-1265, A-1266, A-1267, A-1268, A-1269, A-1270, A-1271, A-1272, A-1273, A-1274, A-1275, A-1276, A-1277, A-1278, A-1279, A-1280, A-1281, A-1282, A-1283, A-1284, A-1285, A-1286, A-1287, A-1288, A-1289, A-1290, A-1291, A-1292, A-1293, A-1294, A-1295, A-1296, A-1297, A-1298, A-1299, A-1300, A-1301, A-1302, A-1303, A-1304, A-1305, A-1306, A-1307, A-1308, A-1309, A-1310, A-1311, A-1312, A-1313, A-1314, A-1315, A-1316, A-1317, A-1318, A-1319, A-1320, A-1321, A-1322, A-1323, A-1324, A-1325, A-1326, A-1327, A-1328, A-1329, A-1330, A-1331, A-1332, A-1333, A-1334, A-1335, A-1336, A-1337, A-1338, A-1339, A-1340, A-1341, A-1342, A-1343, A-1344, A-1345, A-1346, A-1347, A-1348, A-1349, A-1350, A-1351, A-1352, A-1353, A-1354, A-1355, A-1356, A-1357, A-1358, A-1359, A-1360, A-1361, A-1362, A-1363, A-1364, A-1365, A-1366, A-1367, A-1368, A-1369, A-1370, A-1371, A-1372, A-1373, A-1374, A-1375, A-1376, A-1377, A-1378, A-1379, A-1380, A-1381, A-1382, A-1383, A-1384, A-1385, A-1386, A-1387, A-1388, A-1389, A-1390, A-1391, A-1392, A-1393, A-1394, A-1395, A-1396, A-1397, A-1398, A-1399, A-1400, A-1401, A-1402, A-1403, A-1404, A-1405, A-1406, A-1407, A-1408, A-1409, A-1410, A-1411, A-1412, A-1413, A-1414, A-1415, A-1416, A-1417, A-1418, A-1419, A-1420, A-1421, A-1422, A-1423, A-1424, A-1425, A-1426, A-1427, A-1428, A-1429, A-1430, A-1431, A-1432, A-1433, A-1434, A-1435, A-1436, A-1437, A-1438, A-1439, A-1440, A-1441, A-1442, A-1443, A-1444, A-1445, A-1446, A-1447, A-1448, A-1449, A-1450, A-1451, A-1452, A-1453, A-1454, A-1455, A-1456, A-1457, A-1458, A-1459, A-1460, A-1461, A-1462, A-1463, A-1464, A-1465, A-1466, A-1467, A-1468, A-1469, A-1470, A-1471, A-1472, A-1473, A-1474, A-1475, A-1476, A-1477, A-1478, A-1479, A-1480, A-1481, A-1482, A-1483, A-1484, A-1485, A-1486, A-1487, A-1488, A-1489, A-1490, A-1491, A-1492, A-1493, A-1494, A-1495, A-1496, A-1497, A-1498, A-1499, A-1500, A-1501, A-1502, A-1503, A-1504, A-1505, A-1506, A-1507, A-1508, A-1509, A-1510, A-1511, A-1512, A-1513, A-1514, A-1515, A-1516, A-1517, A-1518, A-1519, A-1520, A-1521, A-1522, A-1523, A-1524, A-1525, A-1526, A-1527, A-1528, A-1529, A-1530, A-1531, A-1532, A-1533, A-1534, A-1535, A-1536, A-1537, A-1538, A-1539, A-1540, A-1541, A-1542, A-1543, A-1544, A-1545, A-1546, A-1547, A-1548, A-1549, A-1550, A-1551, A-1552, A-1553, A-1554, A-1555, A-1556, A-1557, A-1558, A-1559, A-1560, A-1561, A-1562, A-1563, A-1564, A-1565, A-1566, A-1567, A-1568, A-1569, A-1570, A-1571, A-1572, A-1573, A-1574, A-1575, A-1576, A-1577, A-1578, A-1579, A-1580, A-1581, A-1582, A-1583, A-1584, A-1585, A-1586, A-1587, A-1588, A-1589, A-1590, A-1591, A-1592, A-1593, A-1594, A-1595, A-1596, A-1597, A-1598, A-1599, A-1600, A-1601, A-1602, A-1603, A-1604, A-1605, A-1606, A-1607, A-1608, A-1609, A-1610, A-1611, A-1612, A-1613, A-1614, A-1615, A-1616, A-1617, A-1618, A-1619, A-1620, A-1621, A-1622, A-1623, A-1624, A-1625, A-1626, A-1627, A-1628, A-1629, A-1630, A-1631, A-1632, A-1633, A-1634, A-1635, A-1636, A-1637, A-1638, A-1639, A-1640, A-1641, A-1642, A-1643, A-1644, A-1645, A-1646, A-1647, A-1648, A-1649, A-1650, A-1651, A-1652, A-1653, A-1654, A-1655, A-1656, A-1657, A-1658, A-1659, A-1660, A-1661, A-1662, A-1663, A-1664, A-1665, A-1666, A-1667, A-1668, A-1669, A-1670, A-1671, A-1672, A-1673, A-1674, A-1675, A-1676, A-1677, A-1678, A-1679, A-1680, A-1681, A-1682, A-1683, A-1684, A-1685, A-1686, A-1687, A-1688, A-1689, A-1690, A-1691, A-1692, A-1693, A-1694, A-1695, A-1696, A-1697, A-1698, A-1699, A-1700, A-1701, A-1702, A-1703, A-1704, A-1705, A-1706, A-1707, A-1708, A-1709, A-1710, A-1711, A-1712, A-1713, A-1714, A-1715, A-171

5758 West Las Positas Blvd. | Amenities Plan First Floor B

3D
STRATEGIES



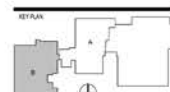
CONSTRUCTION NOTES

- [illegible]

KEYNOTE LEGEND

- | | |
|-------|--|
| 03:01 | NEW INFLU. CONC. SLAB |
| 03:02 | NEW CONCRETE AND CONTOURTOP. SEE CASEWORK ELEVATIONS AND DETAILS |
| 03:03 | NEW CASEWORK/DECK. SEE CASEWORK ELEVATIONS AND DETAILS |
| 03:04 | UPPER AND LOWER CASEWORK WITH NO BACKSPASH. SEE CASEWORK ELEVATIONS |
| 03:12 | NEW CASEWORK AND SERVICE CONTOURTOP. SEE CASEWORK ELEVATION DETAILS |
| 03:05 | NEW DOOR AND DOOR FRAME. SEE DOOR SCHEDULE |
| 03:04 | NEW PASS-THROUGH WINDOW. SEE WINDOW TYPES |
| 03:06 | NEW DOOR AND DOOR FRAME AND SIDELET. SEE DOOR SCHEDULE |
| 03:08 | INSTALL NEW WALL PANEL ALUMINUM THRESHOLD AT (E) ENTRY DOOR |
| 03:09 | NEW FLOORING. SEE FINISHES & PRIMER SCHEDULE |
| 10:08 | ADDITIONAL CODE COMPLIANCE NOTES |
| 03:08 | CONTRACTOR SHALL INSPECT EXISTING 1 HOUR CORRIDOR CONSTRUCTION DETAIL PRIOR TO AWARD OF CONTRACT |
| 03:09 | NEW ELECTRICAL, DATA, PHONE, SECURITY OR OTHER CONDUITS, SYSTEMS, RACEWAY, ETC. SHALL BE INSTALLED IN COMPLIANCE WITH ALL 1 HOUR RATING REQUIREMENTS |
| P.01 | EXISTING NON-COMFORMING STAIRS, TECHNICALLY MEASURABLE REQUIRES STRUCTURAL REPAIRS |

CONSULTANT

[illegible]

DRAWN BY: **GRANTER, C.R.** CHECKED BY: **BBB**
 DATE: **01/10/2011** DSN JOB NO: **0000**
 SHEET TITLE:
CONSTRUCTION PLAN -
FIRST FLOOR - B

SHEET NUMBER

A-1.2

DISCLAIMER

While the information contained herein has been provided in good faith and in an effort to provide prospective buyers with relevant property data, it should not be considered a substitute for a thorough due diligence investigation.

The information contained herein has been obtained from sources we believe to be reliable; however, 3D Strategies has not verified, and will not verify, any of the information contained herein, nor has 3D Strategies conducted any conclusive investigation regarding these matters and makes no warranty or representation whatsoever regarding the accuracy or completeness of the information provided. All potential buyers must take appropriate measures to verify all of the information set forth herein.

3D Strate has not made any investigation, and makes no warranty or representation, with respect to the subject property, the future projected financial performance of the property, the property's development potential, the size and square footage of the property and improvements, the presence or absence of contaminating substances, PCBs or asbestos (or any other hazardous materials or substances), the compliance with Local, State and Federal regulations, or the physical condition of the improvements of the subject property.



EXCLUSIVE CONTACT



Dominic D. Dutra

BS, MBA, CCIM

ddutra@3dstrategies.com

510.366.9931

DRE License #: 00963281

