

**CLASS 'A' OFFICE SPACE
IN CHERRY HILL'S GOLDEN TRIANGLE**
51 HADDONFIELD ROAD | CHERRY HILL, NJ

51
HADDONFIELD
the
TOP of the
TRIANGLE



SUITE 350 COMING AVAILABLE 3/1/2026



TAKE A LOOK AROUND!

**CLICK HERE FOR
VIRTUAL TOURS**

**Suites
Available
from **1,109** to **5,499** square feet**



**EV Charging Stations &
Solar Rooftop Are Here!**

INSTITUTIONAL OWNERSHIP & PROPERTY MANAGEMENT



TIME EQUITIES INC.



LEASING CONTACTS

Rebecca Ting, SIOR
+1 856 234 9600 ext 206
rebecca.ting@naimertz.com

Julie Kronfeld
+1 856 802 6516
julie.kronfeld@naimertz.com

Naimertz

21 Roland Avenue
Mount Laurel, NJ 08054
+1 856 234 9600
naimertz.com





CURRENT AVAILABILITIES

1ST FLOOR	SF	
SUITE 100	1,109	
SUITE 130	1,856	★ CLICK HERE FOR VIRTUAL TOUR
SUITE 135	1,724	EXPANSION

2ND FLOOR	SF	
SUITE 270	1,672	

3RD FLOOR	SF	
SUITE 330	2,755	
SUITE 340	2,128	★ CLICK HERE FOR VIRTUAL TOUR
SUITE 350	3,371	Coming available March 1, 2026. Can be combined with Suite 340 for a total of 5,499 RSF.

51 HADDONFIELD is a 96,000-square-foot office building in Cherry Hill, New Jersey. The three-story, elevator-served building features a glass atrium, café, on-site building manager, exterior bike racks, ample parking and outdoor picnic spot.

Haddonfield Road is Cherry Hill’s primary retail corridor, featuring both the Cherry Hill Mall and Garden State Park shopping complex. Within 5 minutes of 51 Haddonfield are scores of shopping, dining, and lodging options.



LEASE RATE
\$20.00 PSF
+ ELECTRIC
IDEALLY LOCATED
SUBURBAN
OFFICE SPACE



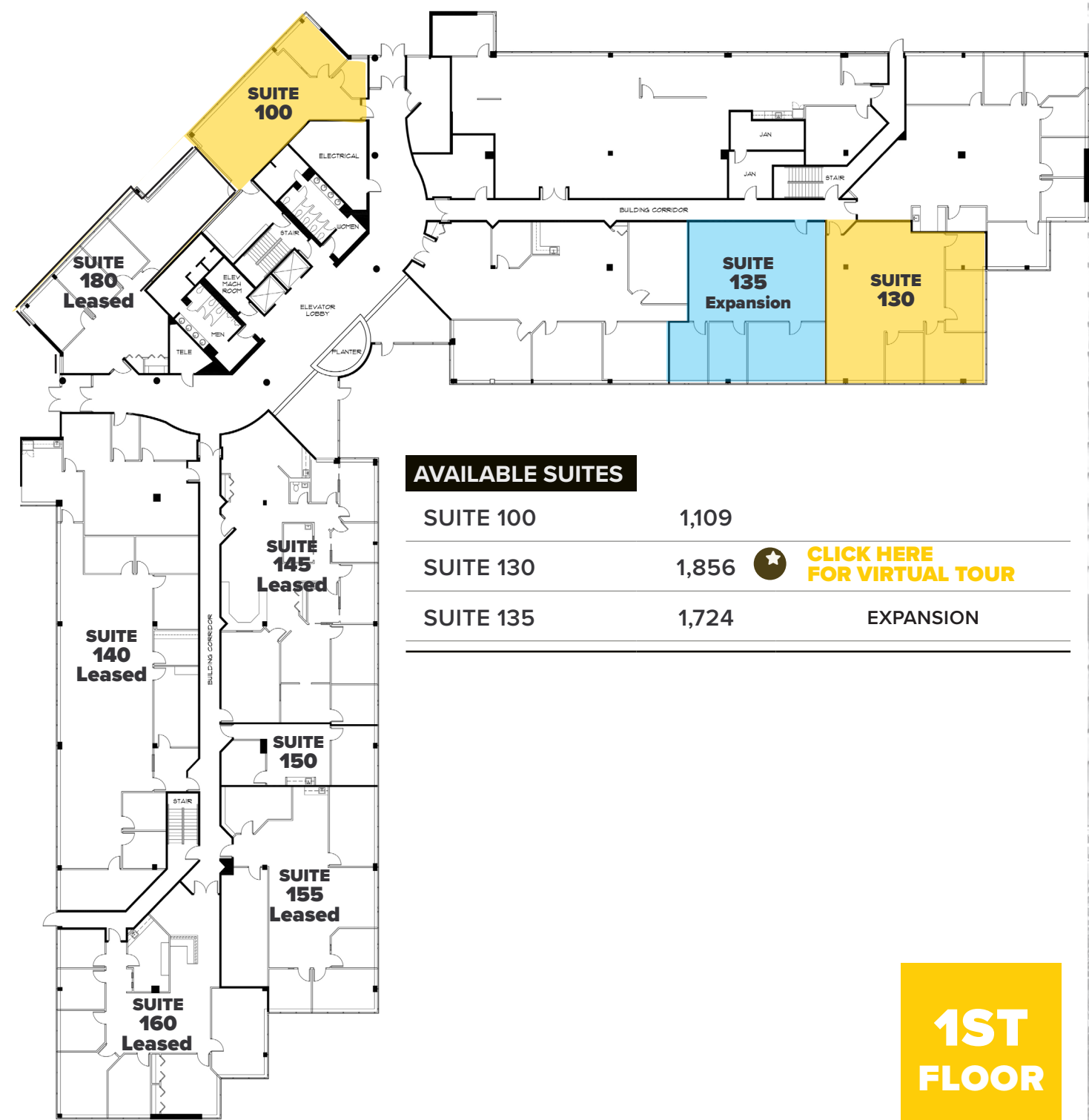
LEASING CONTACTS
Rebecca Ting, SIOR
+1 856 234 9600 ext 206
rebecca.ting@naimertz.com
Julie Kronfeld
+1 856 802 6516
julie.kronfeld@naimertz.com
Naimertz



FLOORPLANS

51
HADDONFIELD

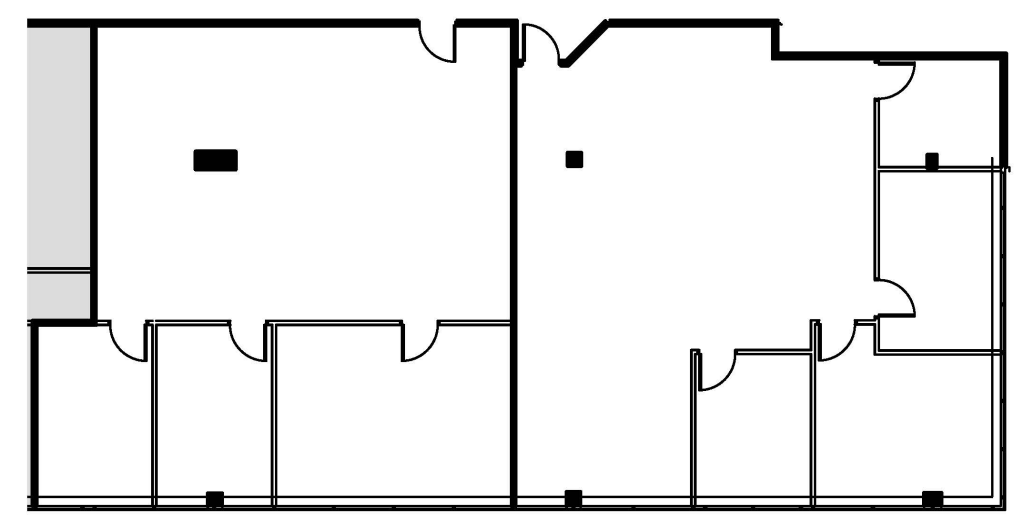
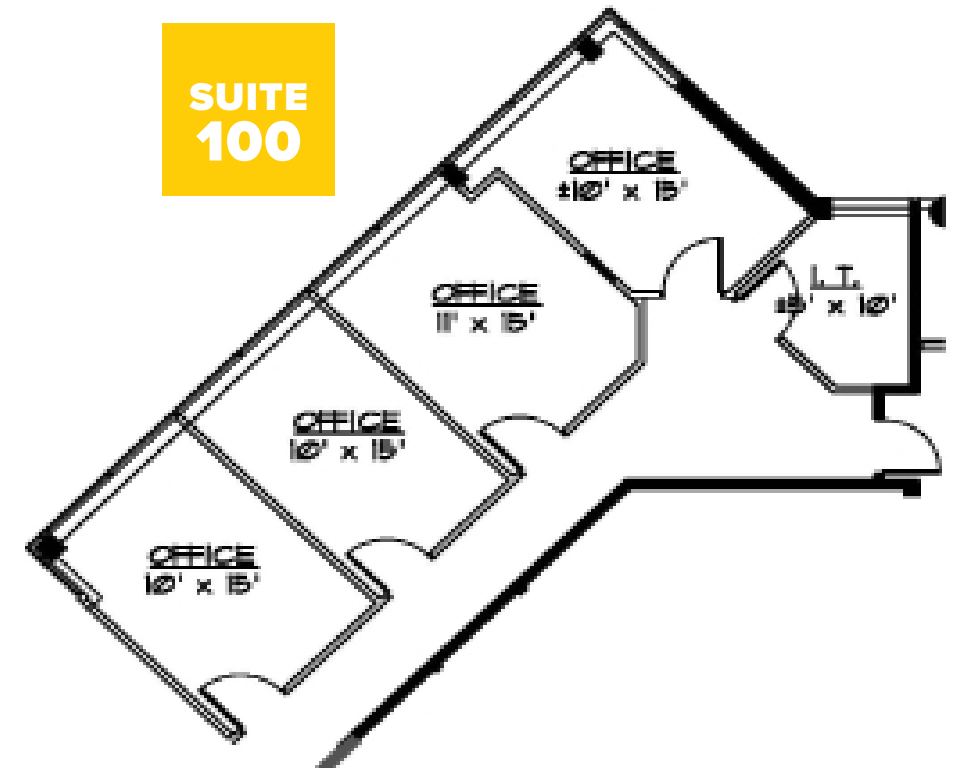
the
TOP of the
TRIANGLE



AVAILABLE SUITES

SUITE 100	1,109	
SUITE 130	1,856	★ CLICK HERE FOR VIRTUAL TOUR
SUITE 135	1,724	EXPANSION

1ST
FLOOR



SUITE
135

SUITE
130

51
HADDONFIELD
the
TOP of the
TRIANGLE

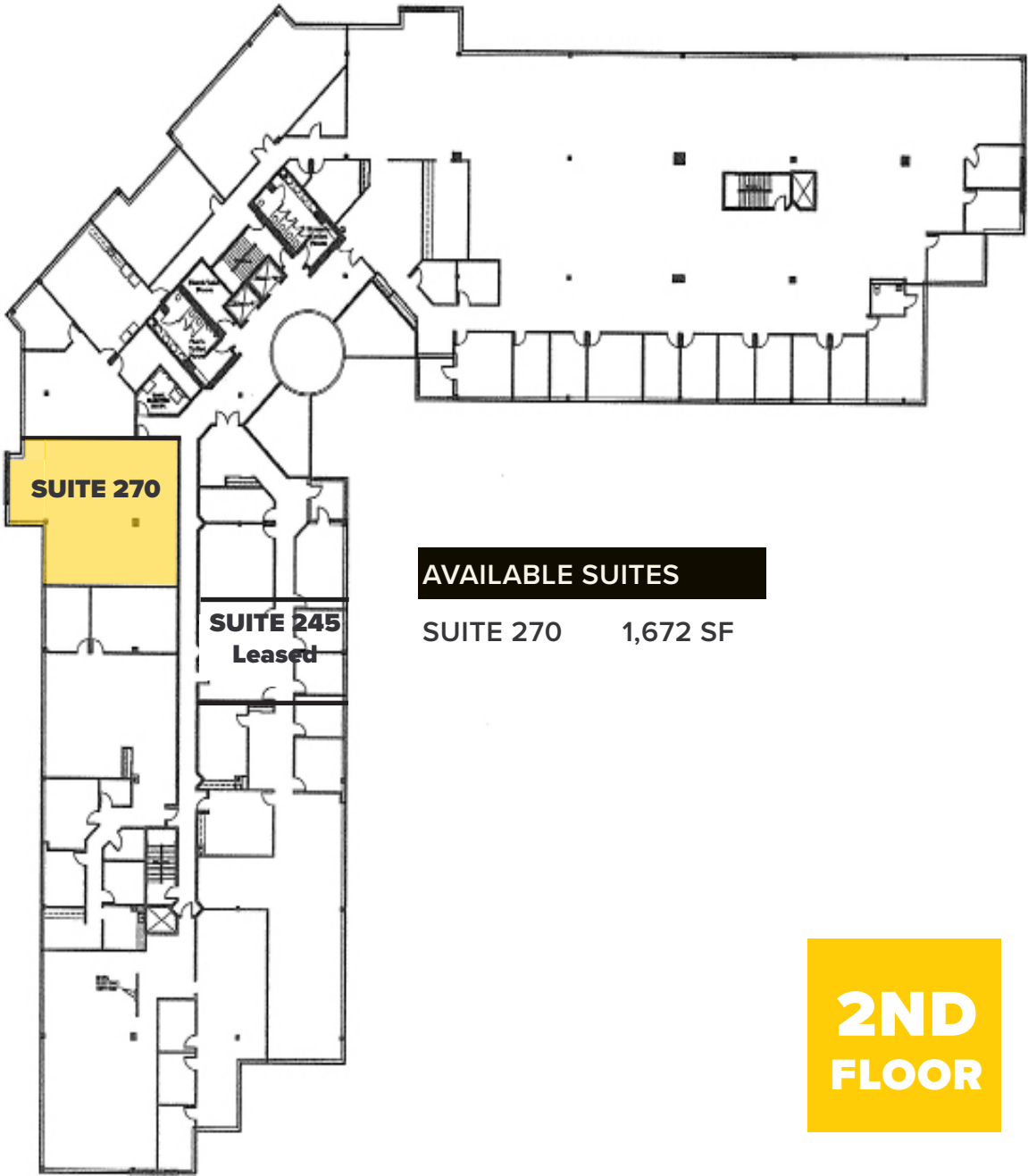
LEASING CONTACTS

Rebecca Ting, SIOR
+1 856 234 9600 ext 206
rebecca.ting@naimertz.com

Julie Kronfeld, SIOR
+1 856 802 6516
julie.kronfeld@naimertz.com



LEASE RATE
\$20.00 PSF
+ ELECTRIC

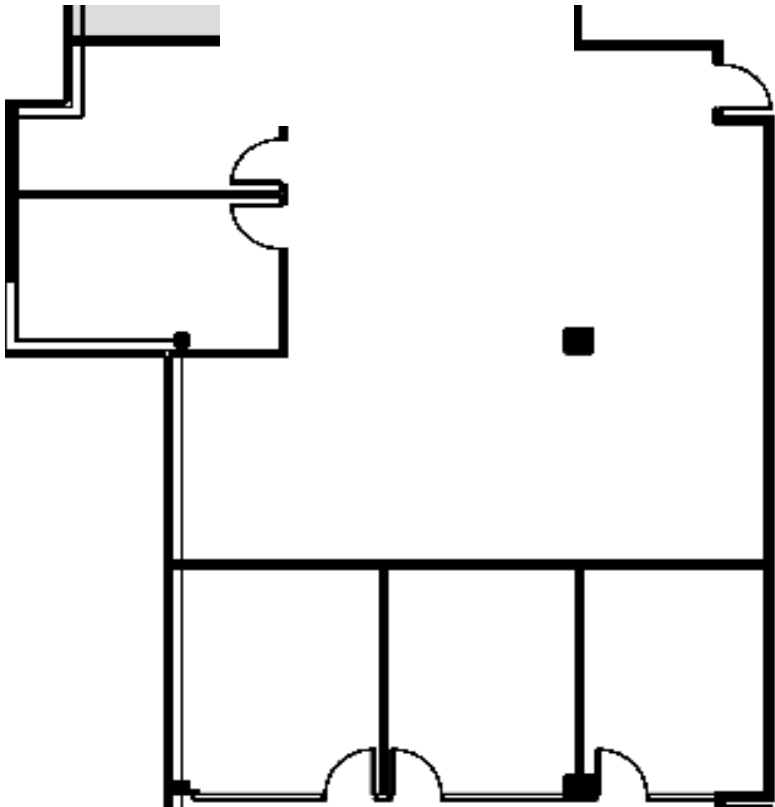


AVAILABLE SUITES

SUITE 270	1,672 SF
-----------	----------

2ND
FLOOR

SUITE
270

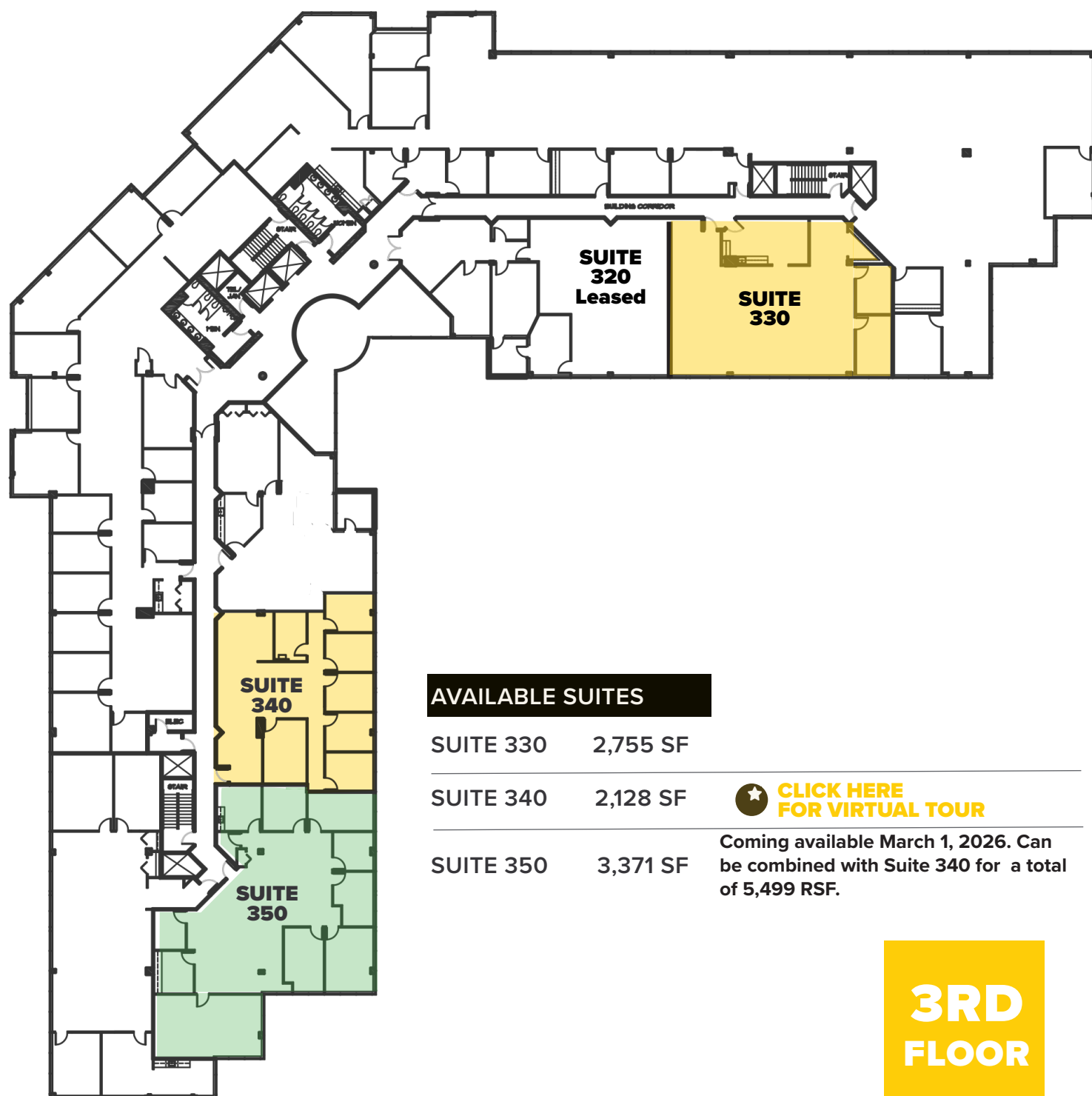


LEASING CONTACTS

Rebecca Ting, SIOR
+1 856 234 9600 ext 206
rebecca.ting@naimertz.com

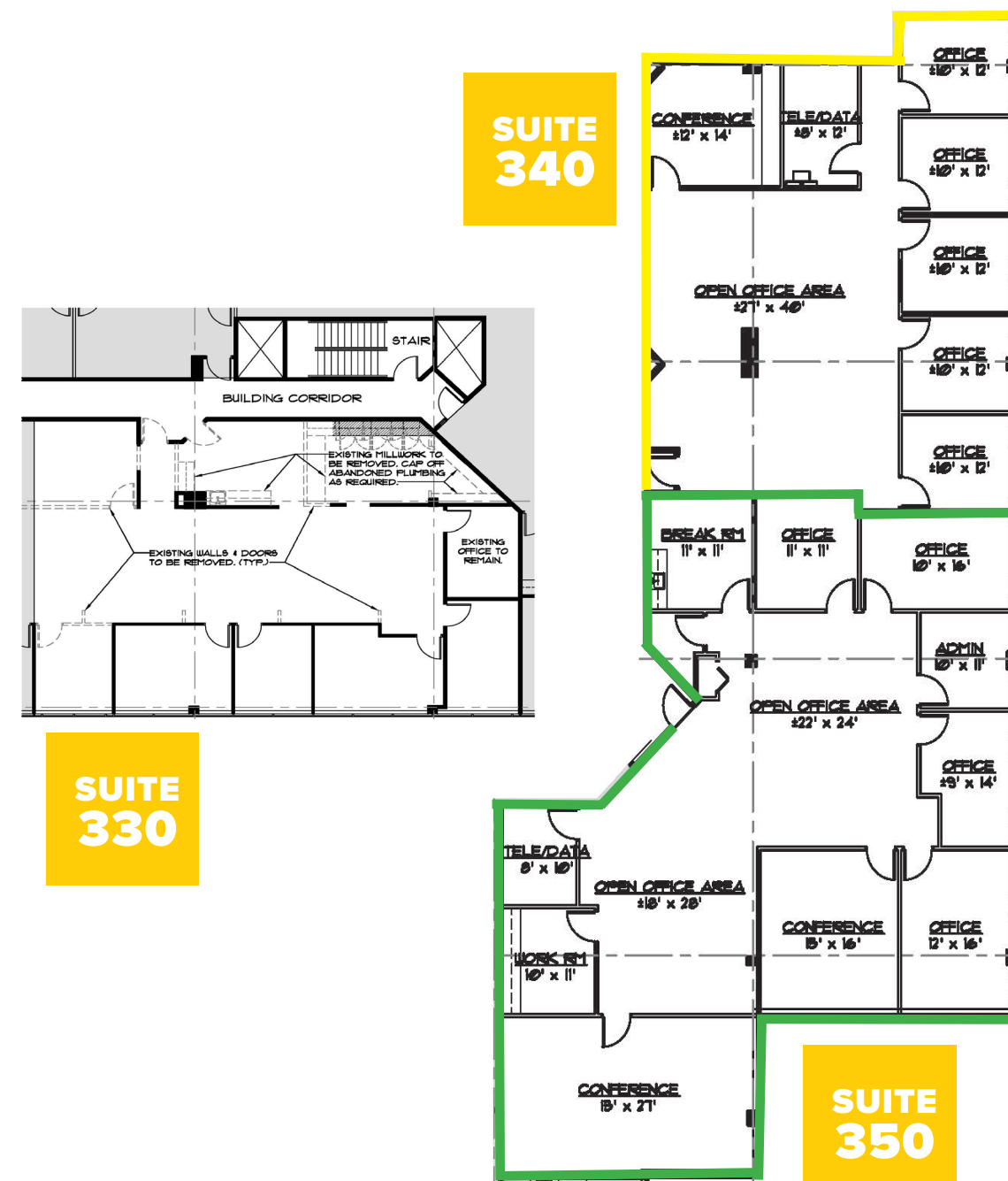
Julie Kronfeld
+1 856 802 6516
julie.kronfeld@naimertz.com





Coming available March 1, 2026. Can be combined with Suite 340 for a total of 5,499 RSF.

3RD FLOOR



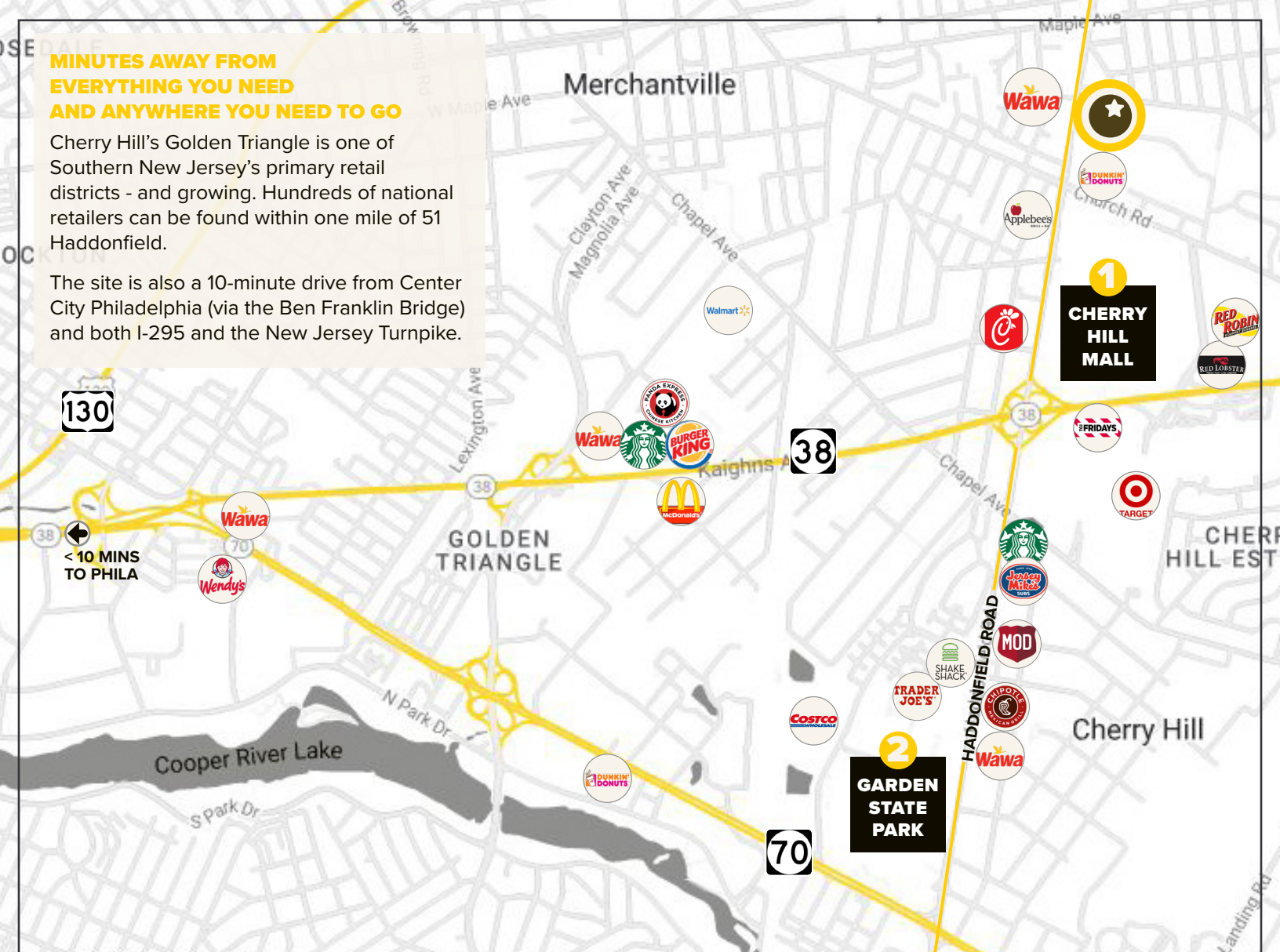
the
TOP of the
TRIANGLE

LEASE RATE
\$20.00 PSF
+ ELECTRIC

**MINUTES AWAY FROM
EVERYTHING YOU NEED
AND ANYWHERE YOU NEED TO GO**

Cherry Hill's Golden Triangle is one of Southern New Jersey's primary retail districts - and growing. Hundreds of national retailers can be found within one mile of 51 Haddonfield.

The site is also a 10-minute drive from Center City Philadelphia (via the Ben Franklin Bridge) and both I-295 and the New Jersey Turnpike.



1

CHERRY HILL MALL

Nordstrom	Macy's
JC Penney's	The Capital Grille
Seasons 52	Maggiano's
Saladworks	
... and over 150 other shops and restaurants	

2

GARDEN STATE PARK

Wegman's	Home Depot
Best Buy	The Cheesecake Factory
Brio	Sugar Factory
Panera	Raising Cane's
Five Guys	Starbucks
... and over 75 other shops and restaurants	



**CLASS 'A' OFFICE SPACE
IN CHERRY HILL'S GOLDEN TRIANGLE**

51 HADDONFIELD ROAD | CHERRY HILL, NJ

**51
HADDONFIELD**

the
TOP of the
TRIANGLE

LEASING CONTACTS

Rebecca Ting, SIOR
+1 856 234 9600 ext 206
rebecca.ting@naimertz.com

Julie Kronfeld
+1 856 802 6516
julie.kronfeld@naimertz.com



**LEASE RATE
\$20.00 PSF
+ ELECTRIC**