



SPORTS FACILITY FOR LEASE

2250 SOUTH 850 WEST, WOODS CROSS, UT 84087

LEASE RATE: ~~\$0.92~~ \$0.82 PSF NNN

PURCHASE: SEE AGENT FOR DETAILS






AVAILABLE APRIL 1, 2026



PROPERTY INFORMATION

- ✓ 27,840 SF Warehouse Available
- ✓ CAM: \$0.13/PSF Per Month
- ✓ (2) Large Restrooms
- ✓ 3 Phase Power- 600 Amps
- ✓ Fully Temperature Controlled
- ✓ (2) Ground Level Doors
- ✓ Great Natural Light with Skylights Throughout
- ✓ Turf Already Installed
- ✓ Clear height: 17'-25'
- ✓ Easy Access to I-15 and Hwy 89

TRAVEL TIMES

	I-15 ENTRANCE	2 MINS
	DOWNTOWN SALT LAKE	15 MINS
	SALT LAKE INTERNATIONAL AIRPORT	15 MINS
	UNIVERSITY OF UTAH	20 MINS
	INLAND PORT	15 MINS

CONTACT US

DEREK KLOPFER

✉ derek@cresutah.com

☎ 801.897.9264

COLTER SMTIH

✉ colter@cresutah.com

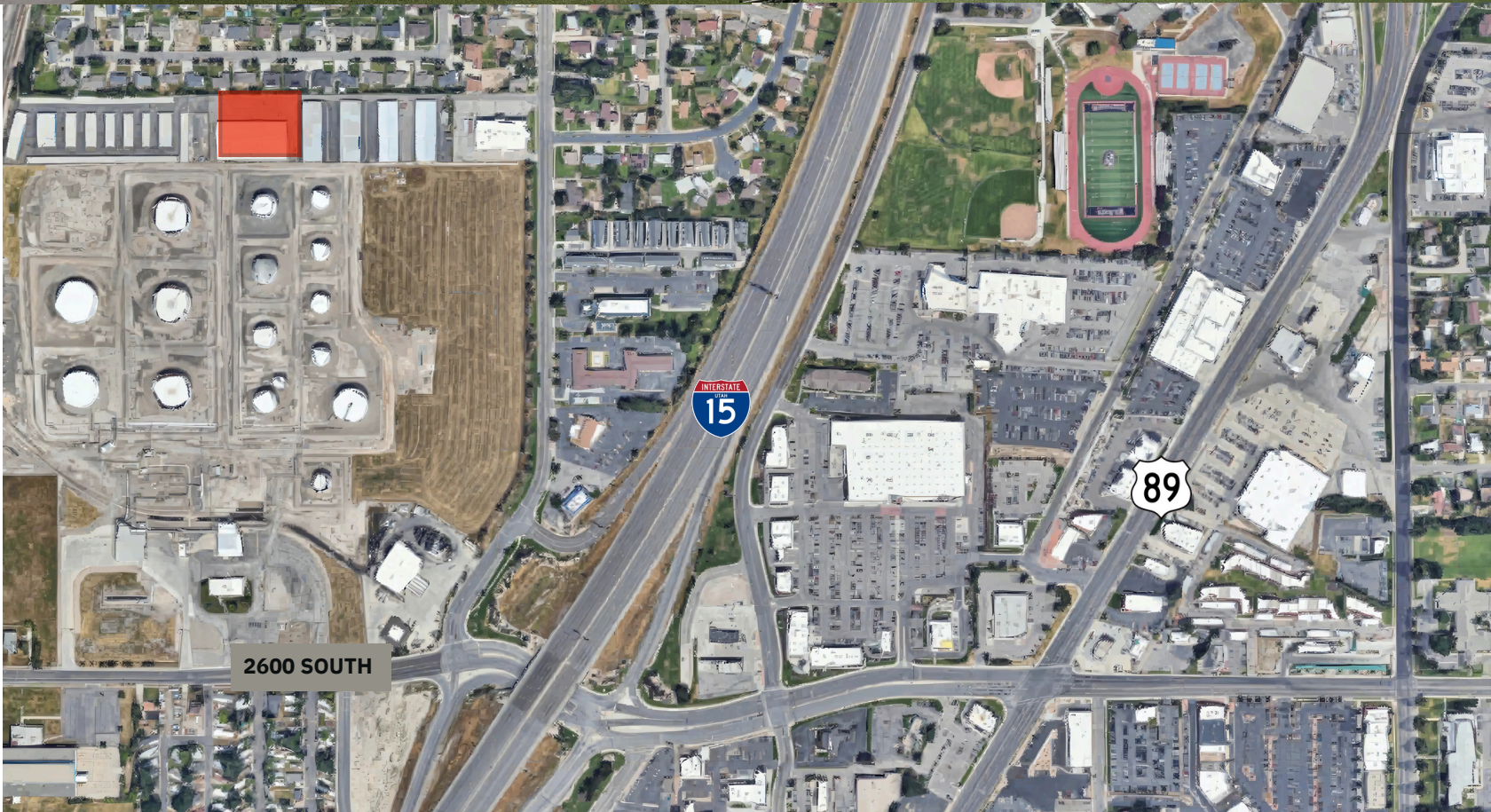
☎ 801.755.8794 🌐 www.cresutah.com

Call Us 
801.876.6070



SPORTS FACILITY FOR LEASE

2250 SOUTH 850 WEST, WOODS CROSS, UT 84087



This information is given with the understanding that all negotiations and/or real estate activity related to the property described above shall be conducted through this CRES office. The above information while not guaranteed, was obtained from sources we believe to be reliable.

CONTACT US

DEREK KLOPFER

✉ derek@cresutah.com ☎ 801.897.9264

COLTER SMTIH

✉ colter@cresutah.com ☎ 801.755.8794 🌐 www.cresutah.com

Call Us

801.876.6070 📞