

Office | For Lease

CBRE

230 E Grand River Avenue

Detroit, MI 48226

From 7,140 RSF up to 21,420 RSF





Prime Downtown Office Opportunity

In an Iconic Detroit Setting

Located at 230 E Grand River Ave in Detroit, this property offers up to 21,420 RSF of available space, featuring floor plates starting at 7,140 RSF (minimum divisible square footage). It boasts a stunning 6,500 SF rooftop terrace with panoramic city views. Conveniently situated in the heart of Paradise Valley, the building offers easy access to numerous parking options, including dedicated spaces in the Opera House garage. Its prime location provides proximity to key Detroit landmarks such as Comerica Park, Ford Field, the Detroit Opera House, DAC, and the 36th District Court.

Stacking Plan

7th Floor

Occupied

6th Floor

Occupied

5th Floor

Occupied

4th Floor

Occupied

3rd Floor

7,140 RSF

2nd Floor

7,140 RSF

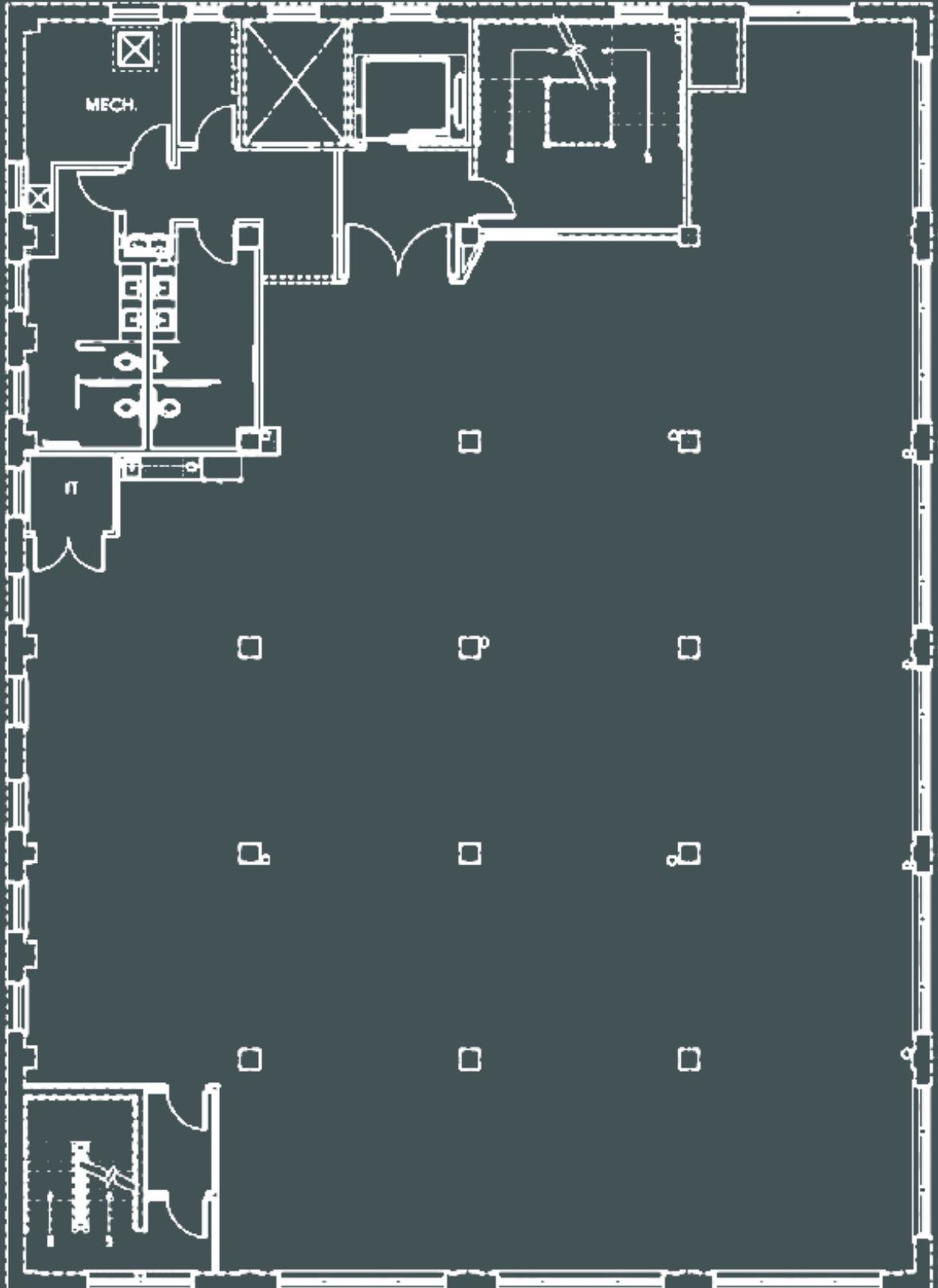
1st Floor

7,140 RSF



Floor Plan

7,140 RSF



Photos



Floors 1-3



Area Map





Contact Us

Brendan George

Senior Vice President

+1 248 351 2039

brendan.george@cbre.com

Jasper Hanifi

Vice President

+1 248 351 2020

jasper.hanifi@cbre.com

© 2025 CBRE, Inc. All rights reserved. This information has been obtained from sources believed reliable, but has not been verified for accuracy or completeness. You should conduct a careful, independent investigation of the property and verify all information. Any reliance on this information is solely at your own risk. CBRE and the CBRE logo are service marks of CBRE, Inc. All other marks displayed on this document are the property of their respective owners, and the use of such logos does not imply any affiliation with or endorsement of CBRE. Photos herein are the property of their respective owners. Use of these images without the express written consent of the owner is prohibited.