

OFFICE SPACE FOR LEASE IN DOWNTOWN DOWNERS GROVE

Anchored by Duly and Peet's Coffee|
Across from Metra Station

**5100 MAIN ST
DOWNERS GROVE, IL**



OFFERING SUMMARY

BUILDING SIZE	21,364 SF
AVAILABLE SF	800 SF - 4,646 SF
YEAR BUILT	1979
ZONING	B-3
SUBMARKET	EASTERN EAST WEST CORRIDOR



FOR MORE INFORMATION
CALL OR TEXT:

RYAN MOEN, SIOR
630.480.6346
RMoen@VersaRES.com

JOHN MILLNER, CCIM
630.480.6342
JMillner@VersaRES.com



BUILDING HIGHLIGHTS

- › Anchored By Peet's Coffee & Duly
- › On-Site Parking Available
- › Equipped with Elevator
- › Renovated Common Areas

AREA HIGHLIGHTS

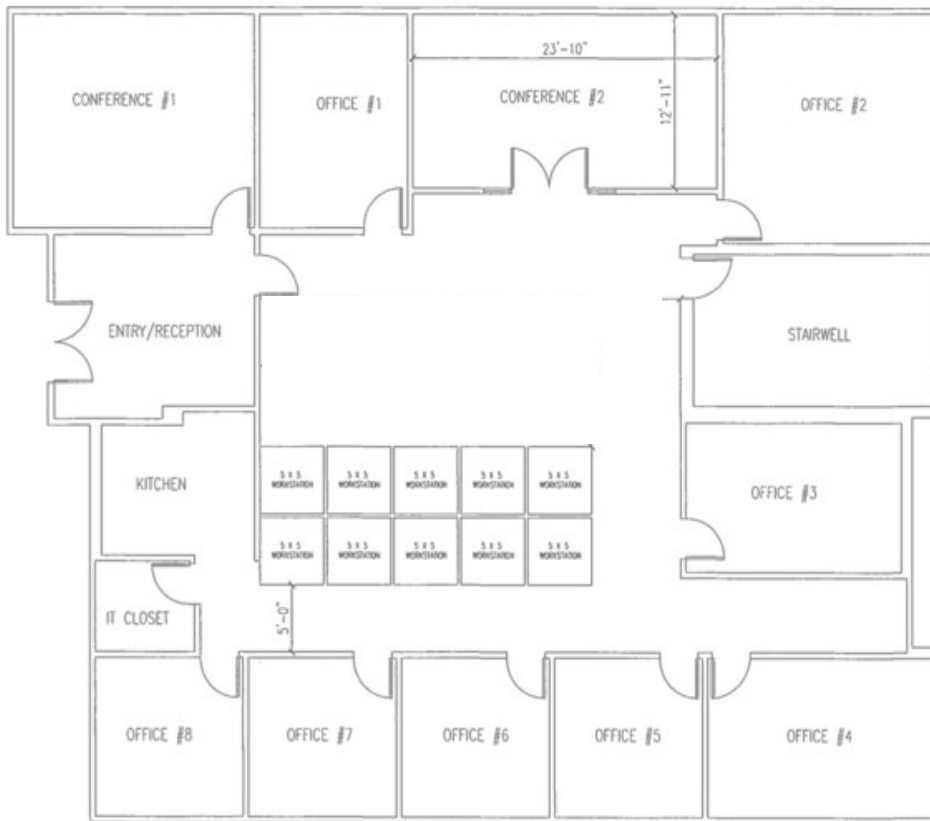
- › Across from Metra Station
- › Abundant Public Parking in the area
- › Numerous Fast Serve and Sit Down Restaurants in close proximity



EXCLUSIVELY REPRESENTED BY
VERSA
REAL ESTATE SERVICES

Featured Office Space (Fully Furnished)

SUITE 200: 4,646 SF (Divisible to 2,000 SF)



SPACE NOTES

- 8 Private Offices
- 2 Conference Rooms
- Reception Area
- 10 Workstations
- On-Site Parking Available
- Equipped with Elevator
- Renovated Common Areas

[CLICK FOR VIRTUAL TOUR](#)

