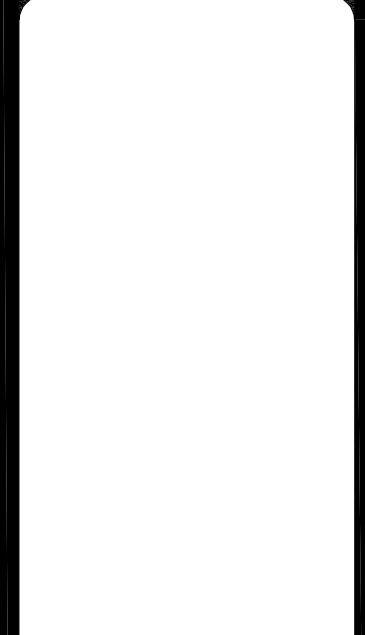


indwell
 ARCHITECTURE & DESIGN
 4825 Metcalf Lane, Suite 110
 Overland Park, Kansas 66202
 www.indwellarchitect.com
 Phone: 913-219-5215



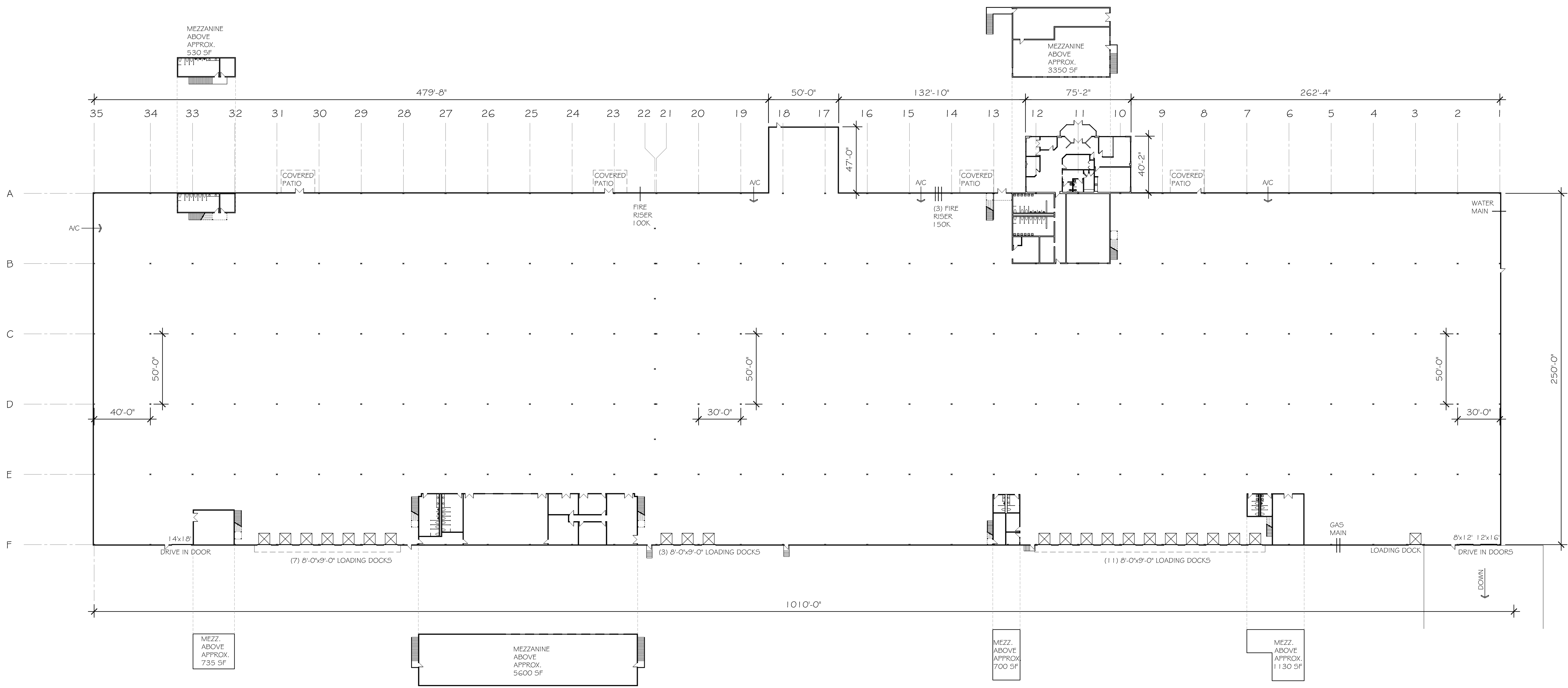
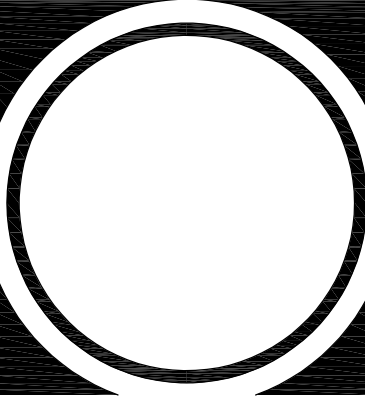
A PROJECT BY:



AN INDUSTRIAL FACILITY FOR:
BOONVILLE, MISSOURI
 2501 BOONSLICK DRIVE
 BOONVILLE, COOPER COUNTY, MISSOURI

REVISION

DATE
 May 20, 2018
 JOB No.
 17025



BOONVILLE MO INDUSTRIAL FACILITY PLAN
 1/32" = 1'-0"
 APPROX. 22,060 SF OFFICE
 APPROX. 243,240 SF WAREHOUSE
 APPROX. 3,975 SF MEZZANINE
 APPROX. 269,275 SF TOTAL