

FOR LEASE

+/- 4 AC STORAGE
LAYDOWN YARD



2423 HOMESTEAD RD, BOWMAN, SC 29018

PROPERTY DESCRIPTION

+/- 4 acres being offered for lease just off I-26, exit 159 in Bowman, SC. Located 1 hour from both Columbia & Charleston, this site is zoned Commercial General in Orangeburg County. The cleared fenced-in laydown yard is ideal for trucking operations, vehicle storage, or building materials supply. The cleaned-up aerial image represents what the property is expected to look like once the current owner vacates and the site is cleared. The enhancement is for illustrative purposes only and reflects the property's potential condition.

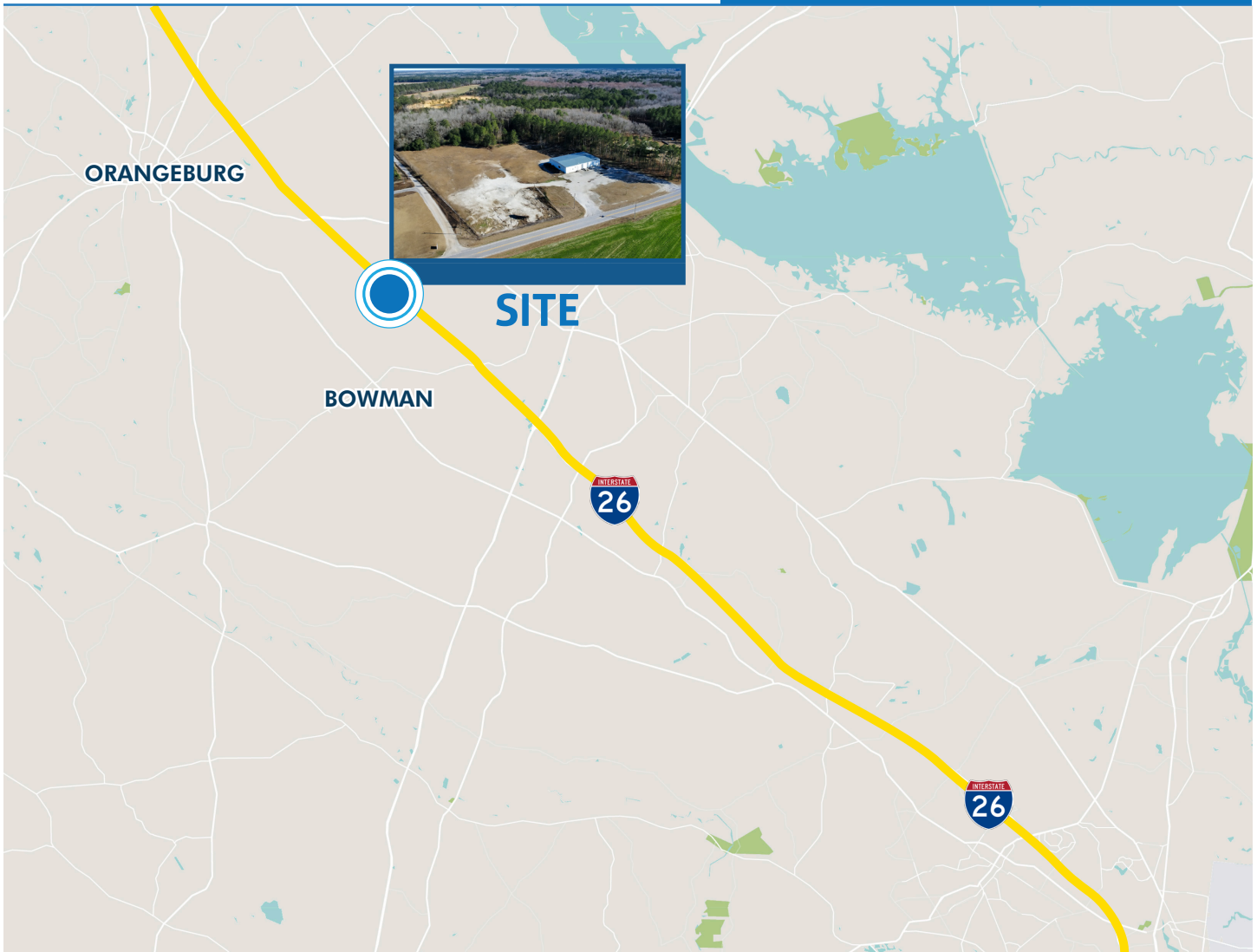


PROPERTY SPECS

SIZE	+/- 4 ACRES
LEASE RATE	\$1,000/AC/Month
PARCEL ID	0258-00-04-003.000
ZONING	CG - COMMERCIAL GENERAL
COUNTY	Orangeburg County
FENCED	Yes

LOCATION

2423 Homestead Rd, Bowman, SC 29018



LEASING CONTACTS:

Crawford Riddle

Associate

864.423.4973

crawford.riddle@

harborcommercialpartners.com

Todd Garrett, CCIM, SIOR

Managing Partner

843.408.8846

todd.garrett@

harborcommercialpartners.com

Tradd Varner, SIOR

Partner

843.532.1684

tradd.varner@

harborcommercialpartners.com



SCAN THE QR
CODE TO SEE
OUR OTHER
ACTIVE
LISTINGS

Harbor
COMMERCIAL PARTNERS