



For Lease

**RIPCO**  
RETAIL LEASING

# 599 Bloomfield Avenue

Verona, NJ  
Essex County



3,667 SF plus a 2,885 SF  
basement

Former bank available

## Contact Exclusive Agents

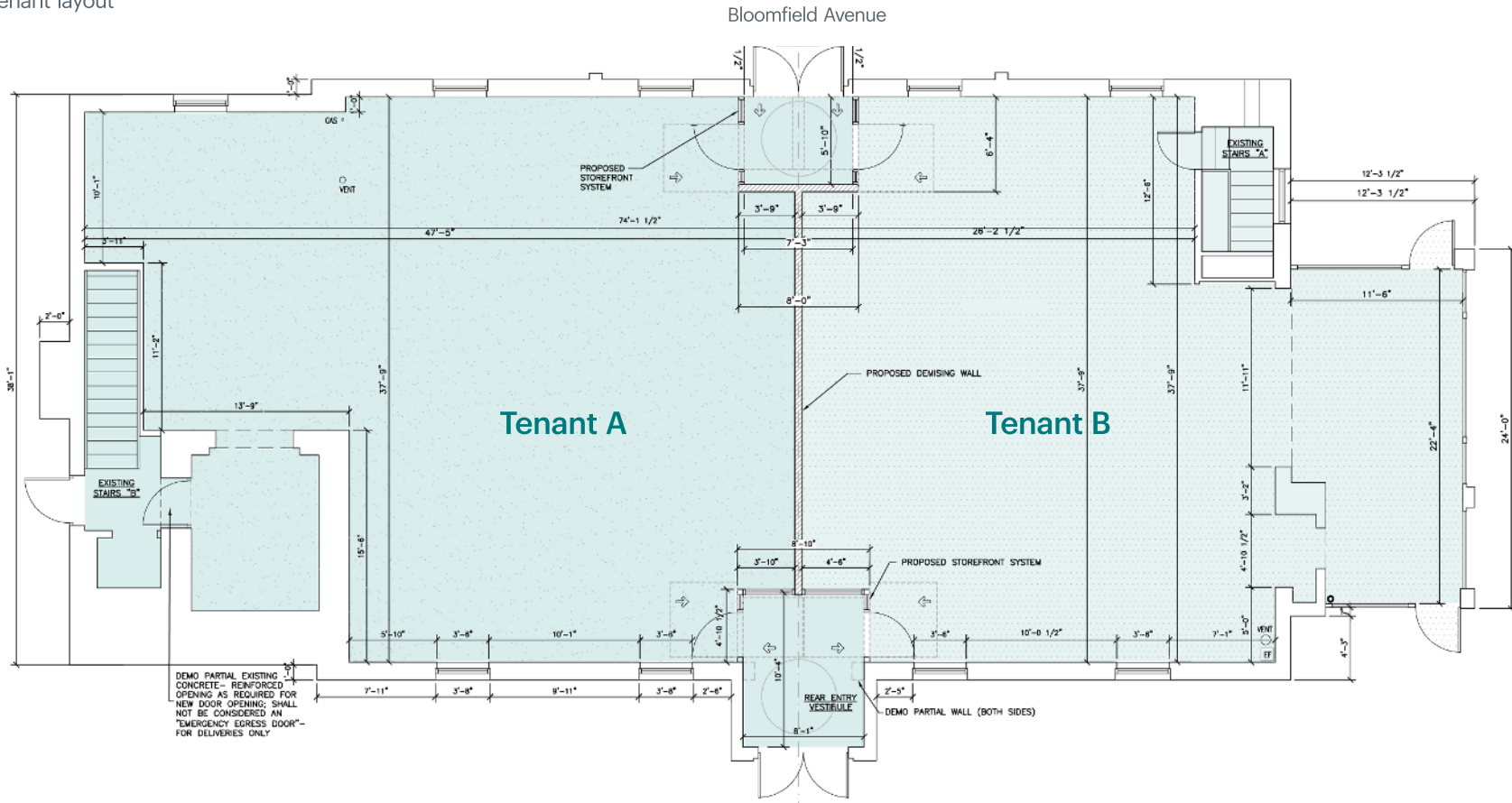
Florian Suserman  
[fsuserman@ripconj.com](mailto:fsuserman@ripconj.com)  
201.777.2301

Matthew Leszyk  
[mleszyk@ripconj.com](mailto:mleszyk@ripconj.com)  
201.636.7553

Samantha Zawadzki  
[szawadzki@ripconj.com](mailto:szawadzki@ripconj.com)  
201.256.0542

# Space Details

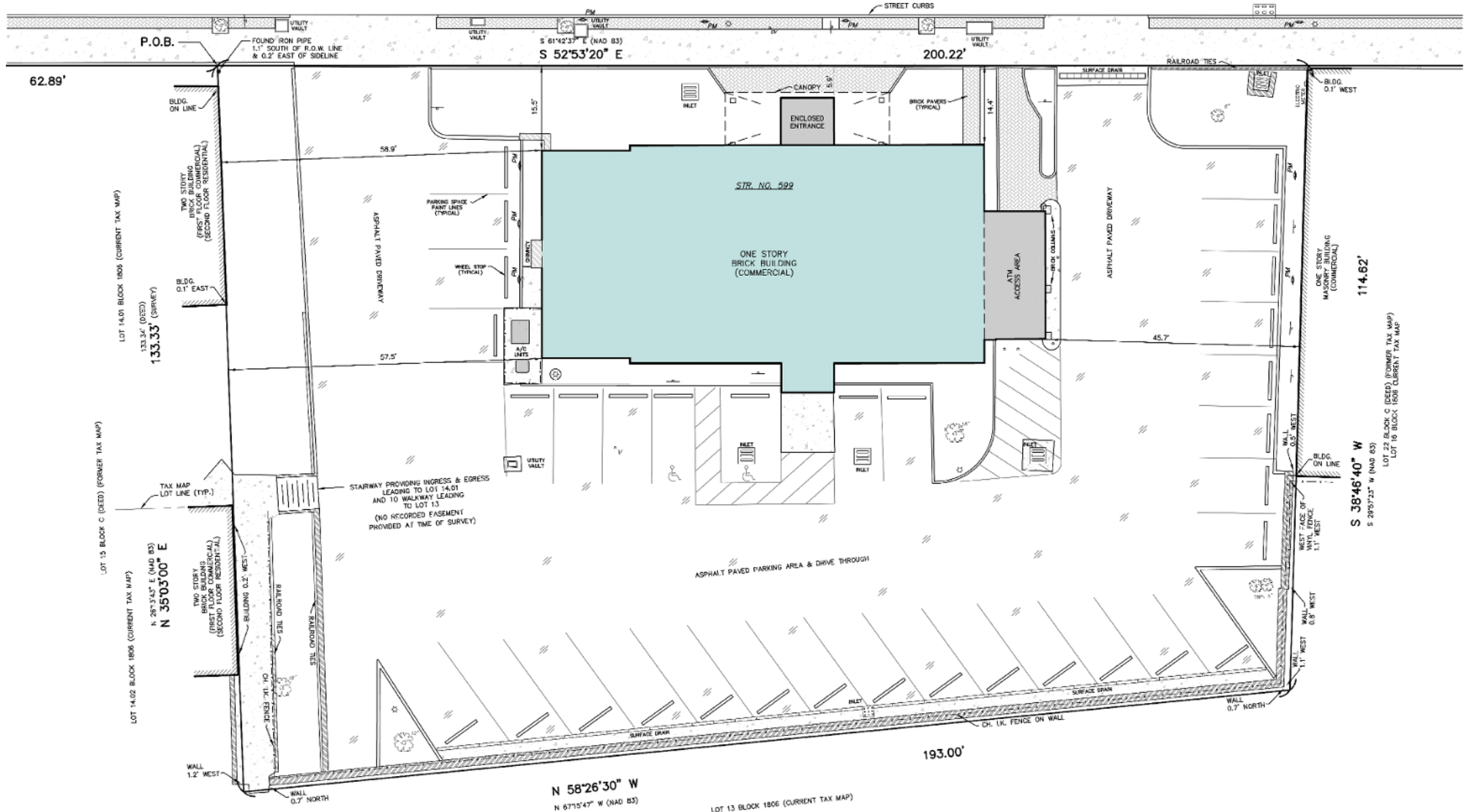
Ground Floor  
Potential two-tenant layout



Size	Ground Floor	3,667 SF	Status	Formerly Wells Fargo	
	Basement	2,885 SF	Neighbors	Alpha Fit Club, Chase Bank, Verona Inn, Walgreen's, Bao Dumplings	
	Total	*6,552SF			
Frontage	81 FT on Bloomfield Avenue		Comments	Freestanding building	Strong presence in the heart of Verona business district
Possession	Immediate			31 dedicated parking spaces	Great frontage on Bloomfield Avenue
Rent	Upon request			Building in very good condition	

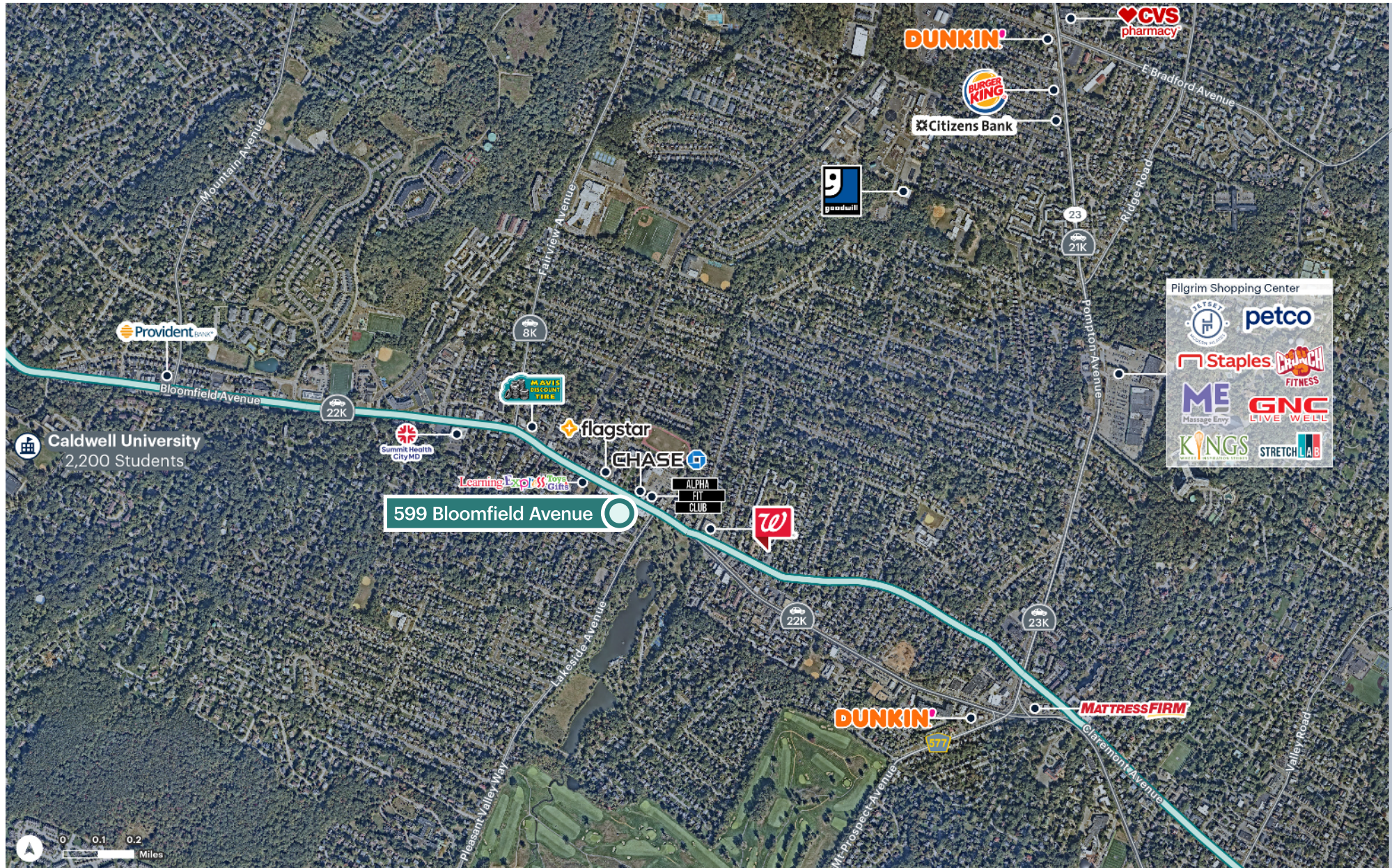


# Property Survey





# Area Retail



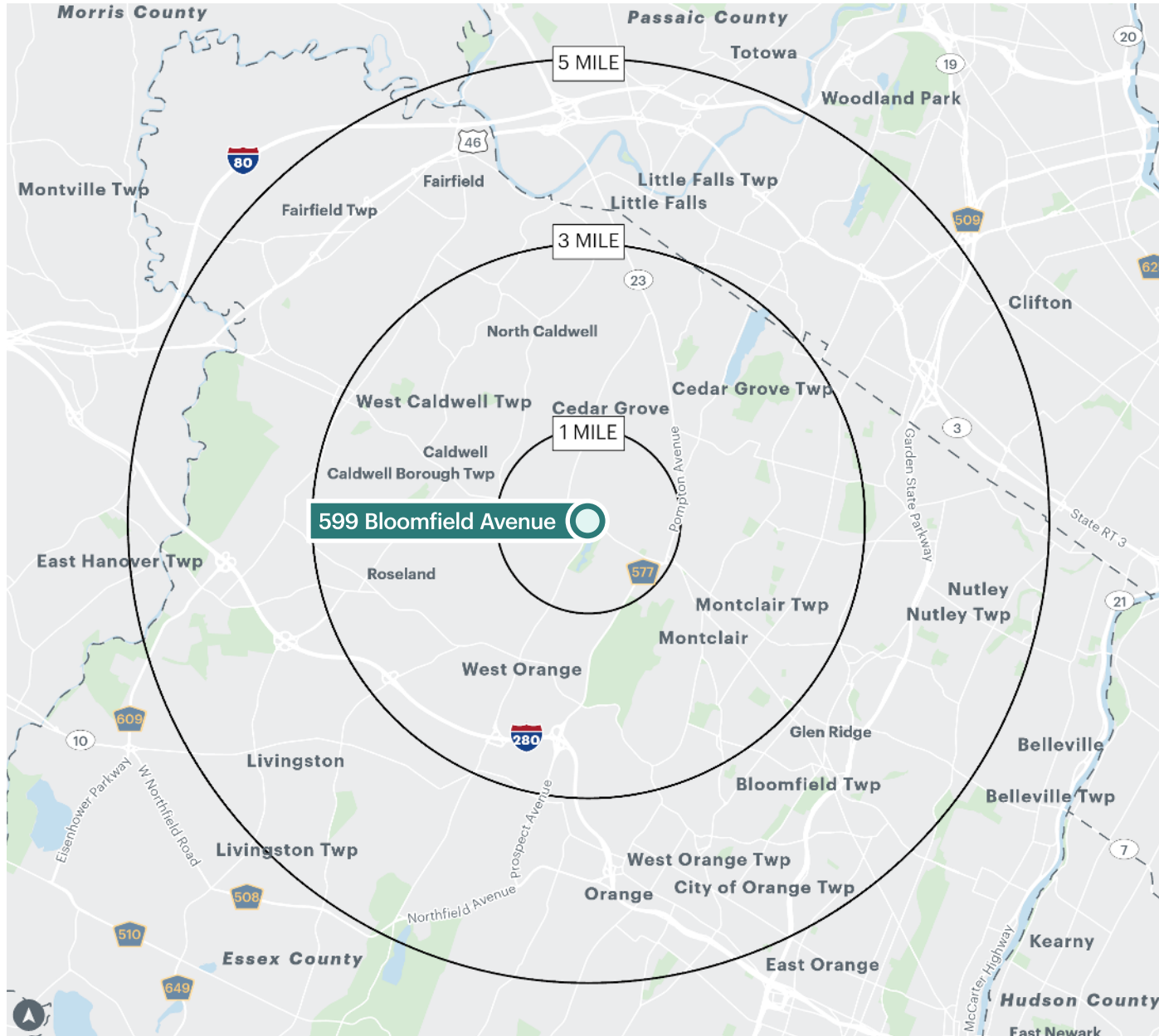


# Convenient Access & Parking





# Area Demographics



<b>Population</b>	1 mile	14,255
	3 miles	119,358
	5 miles	382,355
<b>Total Households</b>	1 mile	5,643
	3 miles	45,605
	5 miles	147,031
<b>Average Household Income</b>	1 mile	\$229,765
	3 miles	\$239,273
	5 miles	\$177,739
<b>Median Household Income</b>	1 mile	\$178,268
	3 miles	\$181,207
	5 miles	\$120,863
<b>Bachelors Degree + Higher Education</b>	1 mile	7,036
	3 miles	56,738
	5 miles	142,184
<b>Total Employees</b>	1 mile	5,294
	3 miles	54,490
	5 miles	193,441
<b>Total Businesses</b>	1 mile	576
	3 miles	5,000
	5 miles	16,079
<b>Total Daytime Population</b>	1 mile	11,866
	3 miles	110,669
	5 miles	376,834

\*Esri 2025 estimates