

200 Old Tappan Road Old Tappan, NJ



For information, please contact:

Dean Tselepis

Senior Managing Director

t 201-460-5156

dean.tselepis@nmrk.com

Joe Brendel

Associate Director

t 201-636-8575

joe.brendel@nmrk.com

201 Route 17 N, 10th Floor
Rutherford, NJ 07070



[nmrk.com](https://www.nmrk.com)

NEWMARK

The information contained herein has been obtained from sources deemed reliable but has not been verified and no guarantee, warranty or representation, either express or implied, is made with respect to such information. Terms of sale or lease and availability are subject to change or withdrawal without notice.

200 Old Tappan Road Old Tappan, NJ

- New mixed-use development in the heart of Northern Bergen County
- Located at a signalized intersection
- 22,016 SF retail strip
- 4,531 SF endcap remains available, divisible
- Two end-cap units with drive-thru
- 99 Luxury townhomes & 130 luxury apartments under construction
- Ample on-site parking
- Minutes from New York border and the Palisades Parkway
- Traffic count: 12,564 along Old Tappan Road
- Walking distance from Northern Valley Regional High School, Charles DeWolf Middle School & Demarest Elementary School
- Neighbors: CVS, Starbucks, Dairy Queen, John Anthony Salon, MOOYAH Burgers, Butterworth's Bagels, Bank of America, Kearny Bank, Aurora Restaurant, Bosfa Italian Restaurant, Old Tappan KinderCare and Stokes Farm

Demographics

Population	1 mile	6,034
	3 miles	60,880
	5 miles	164,041

Average Household Income	1 mile	\$219,922
	3 miles	\$184,340
	5 miles	\$182,462

NEWMARK



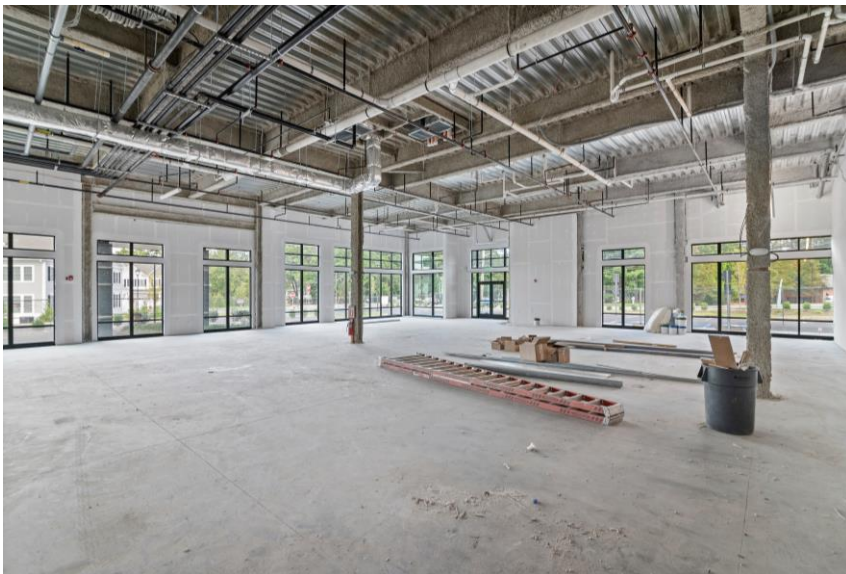
LAST SPACE AVAILABLE

4,531 SF (End Cap)

SIGNED LEASES:



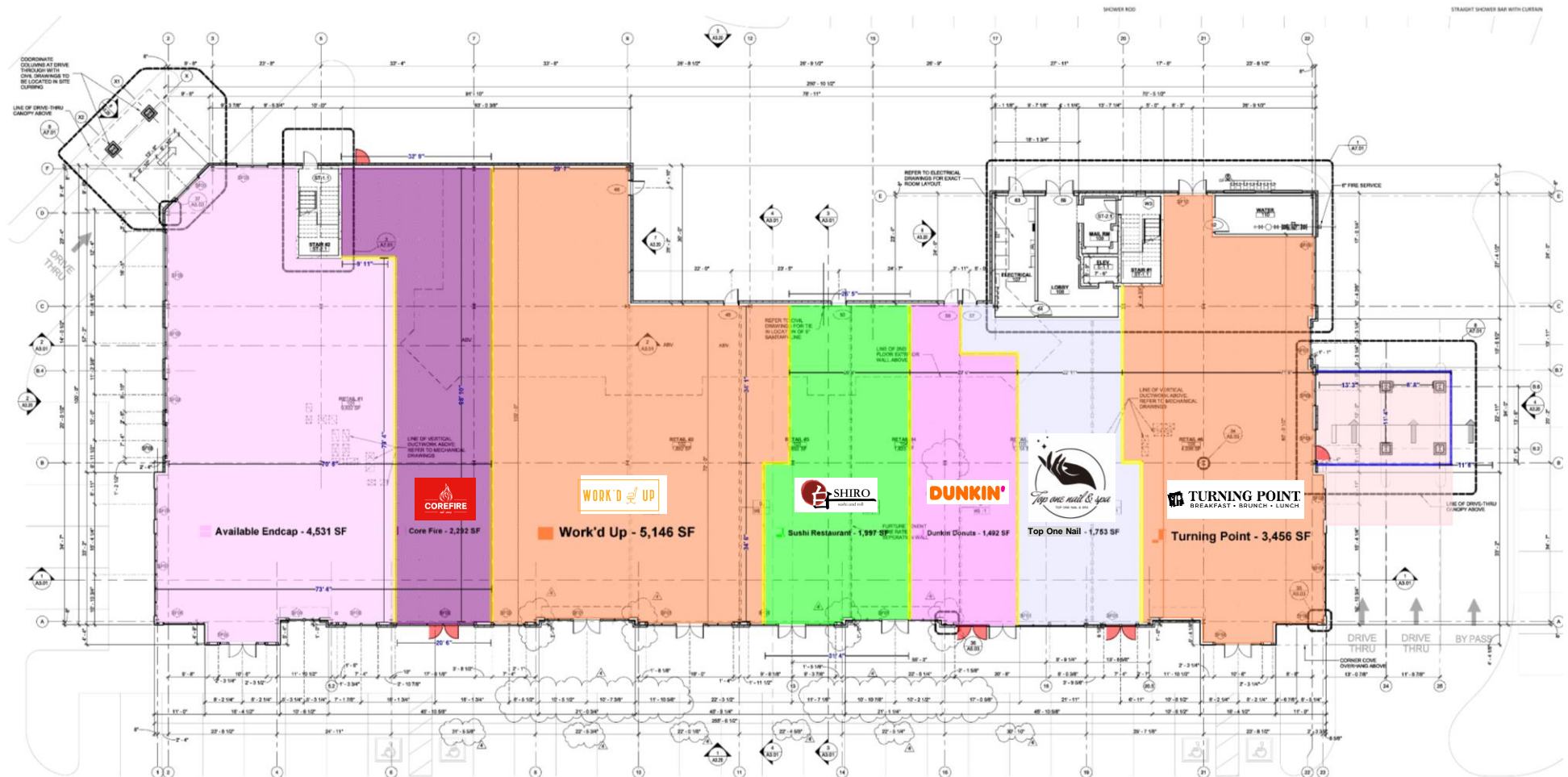
Images



Retail Aerial Map



Leasing Plan



Floor Plan

