

# 3200 Squibb Drive

Rolling Meadows, IL 60008

3200 Squibb Drive  
Rolling Meadows, IL 60008  
CBRE Properties: 3200 Squibb Dr.

102,000 SF Available for Sublease



## 102,000 SF For Sublease

3200 Squibb Drive | Rolling Meadows, IL

# 102,000 SF

## Available For Sublease

3200 Squibb Drive is located in Rolling Meadows, IL. The facility is 102,000 SF industrial building available for sublease. The space features 20' ceiling height, 7 enclosed docks, 2 drive-in doors, 31,000 two-story office space through two floors, and raised floor computer room. Sublease term through 12/31/2026.

Conveniently located at the Southeast corner of the I-90 I-290 interchange.

### Building Specifications

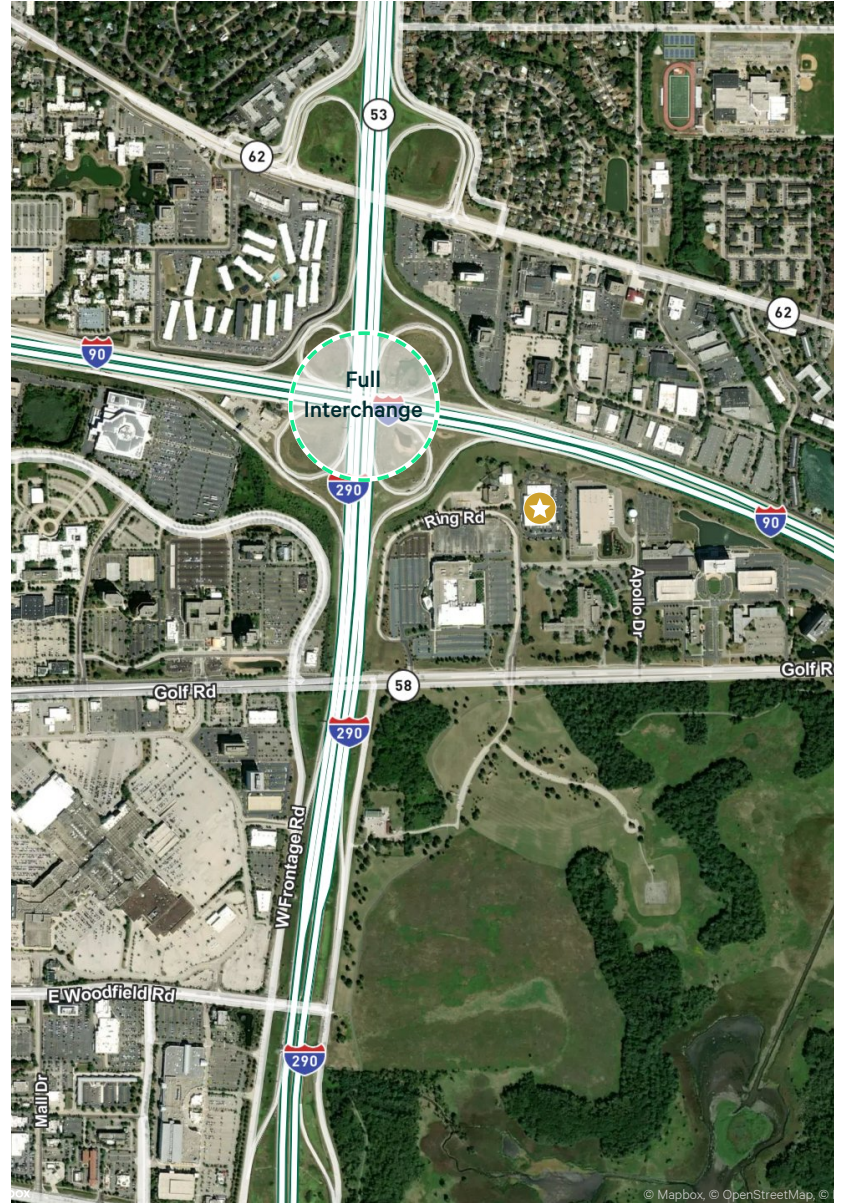
Total Building	102,000 SF (Divisible)
Total Available	102,000 SF
Office	31,000 SF across two floors
Year Built	1971
Land Size	9 Acres
Loading	7 Enclosed Docks, 2 DIDs
Ceiling Height	20'
Power	1,600 Amps @ 480V
Sprinklered	Wet
Parking	124 Car Stalls
RE Taxes	\$1.42/SF
Sublease Term Through	12/31/2026



# Immediate Availability

3200 Squibb Drive is 102,000 SF facility available for Sublease in Rolling Meadows, IL. The property is within close proximity to two major highways and minutes from local amenities.

- + Extra land for either additional parking or expansion options
- + Tollway visibility
- + High quality office area
- + Warehouse walls and ceiling painted white



## Contact Us

### Johnny Connors

Associate  
+1 630 368 7321  
johnny.connors@cbre.com

### Jack Fitzpatrick

Senior Associate  
+1 847 922 5885  
jack.fitzpatrick@cbre.com

© 2024 CBRE, Inc. All rights reserved. This information has been obtained from sources believed reliable, but has not been verified for accuracy or completeness. You should conduct a careful, independent investigation of the property and verify all information. Any reliance on this information is solely at your own risk. CBRE and the CBRE logo are service marks of CBRE, Inc. All other marks displayed on this document are the property of their respective owners, and the use of such logos does not imply any affiliation with or endorsement of CBRE. Photos herein are the property of their respective owners. Use of these images without the express written consent of the owner is prohibited.