



**Properties for Lease**

**1** 26455 Hanna Rd, Conroe, TX 77385



**Property Details**

Rental Rate Yr	\$14.40 /SF/YR
Property Type	Industrial
Rentable Building Area	5,275 SF
Year Built	2009
Status	Active

**Broker Information**

	Tim O'Neill
	(713) 289-0499

Property Notes

**Spaces**

#	Space Avail.	Rental Rate	Min Divisible	Max Contig.	Lease Type	Date Avail.	Description	Service Type
1st Floor - 1	5,275 SF	\$14.40 /SF/YR	5,275 SF		Relet	September 01, 2023		TBD

**Property Description**

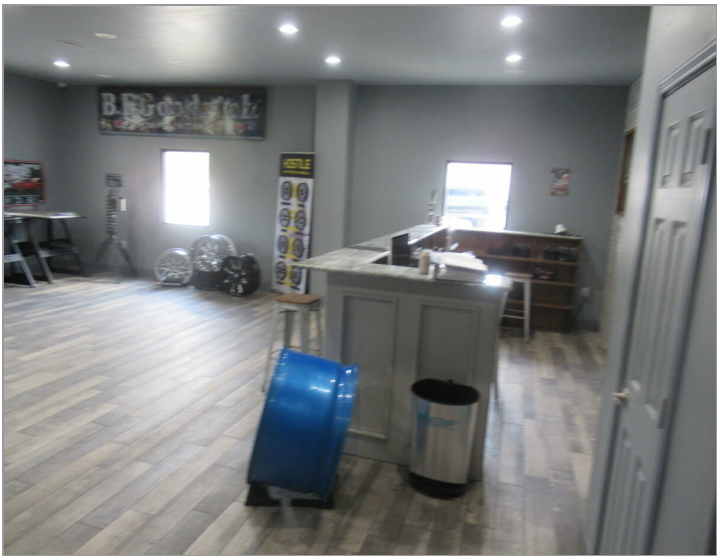
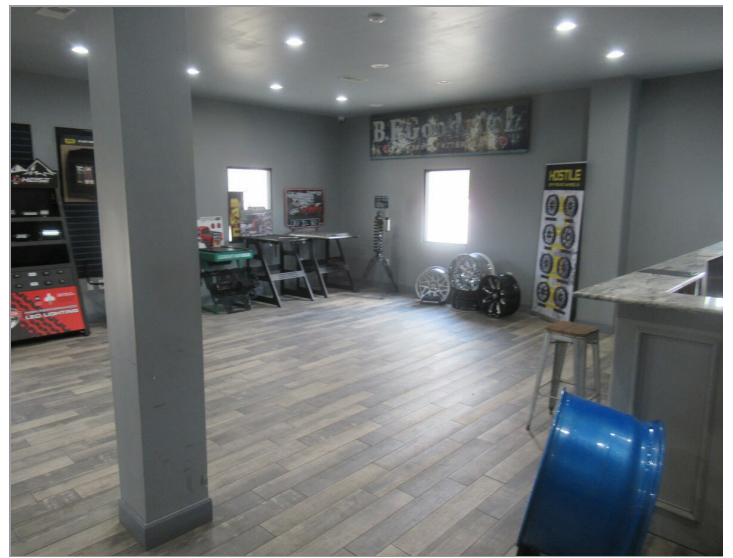
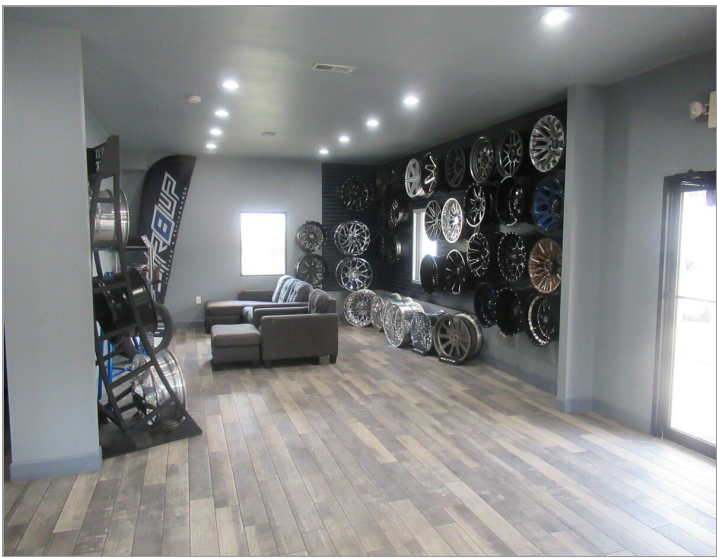
5275 sf office/warehouse with 1344 sf of wide open office/retail space. Small kitchen, two nice restrooms. Just under 4000 sf of warehouse space with 3 bay doors, 22 ft ceilings and fully insulated. Current Tenant was in the automotive custom wheel business and are interested in selling the two lifts, air compressor and inventory of wheels. Great location just minutes from I-45, The Woodlands and Rayford Rd.

**Highlights**

1/2 mile south of Robinson Rd                      Open Plan

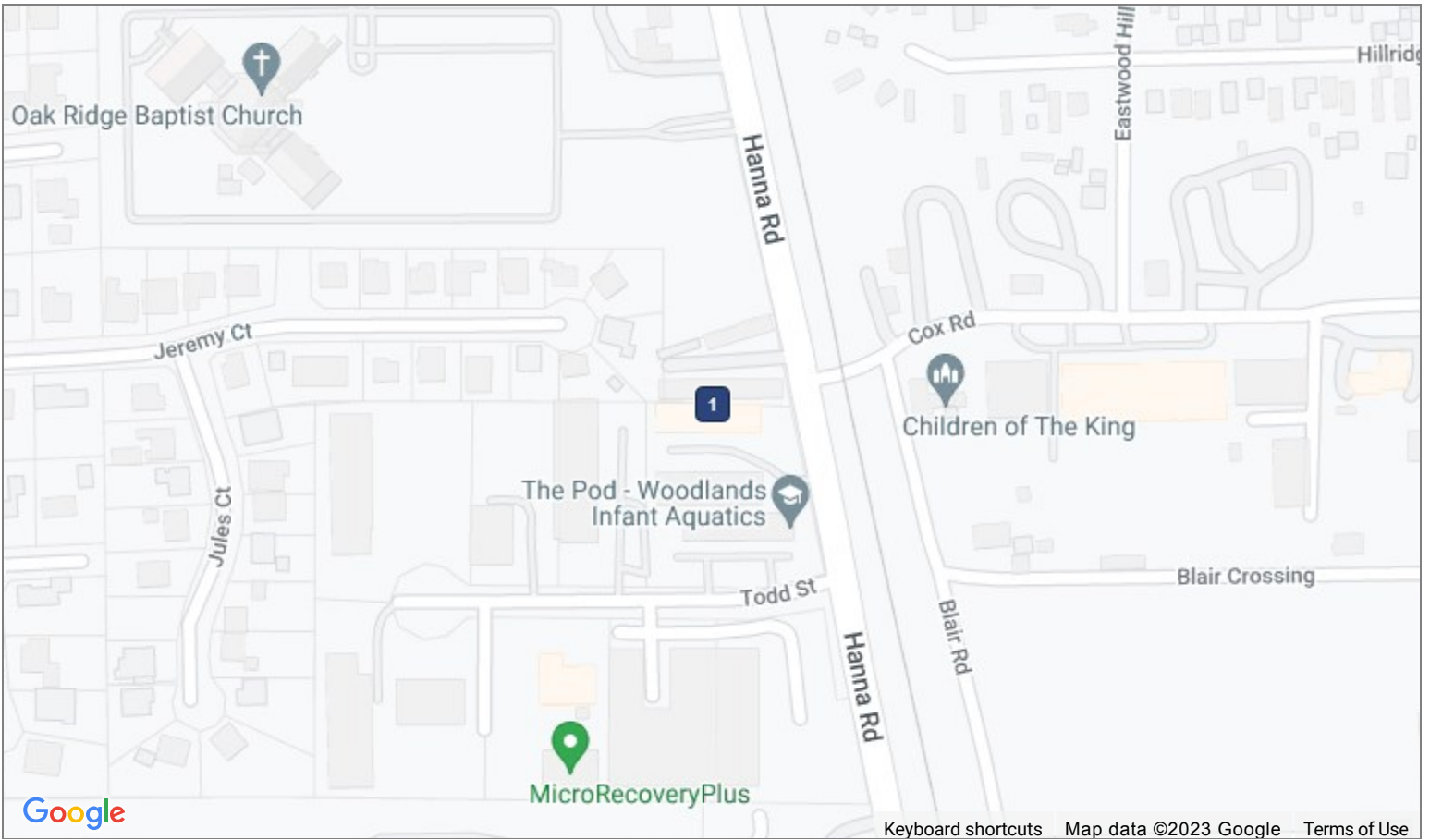
**Photos**







Map



1 26455 Hanna Rd  
Conroe, TX 77385