

Please call Tim Shanahan (978)423-6403 Direct for all of your Real Estate needs.



MLS # 73382288 - Active
Commercial/Industrial - Commercial

15-17-27 Kearney Sq - Unit 1-2-C1 List Price: **\$1,999,000**
Lowell, MA: Downtown, 01852
Middlesex County
Directions: **Downtown Lowell**

Once in lifetime opportunity. Prime downtown Lowell location. 3 separate spaces with loads of potential! Front unit is a 2684 sf full service restaurant that includes all equipment as attached. Middle unit is an 1815 sf former bar space that could be used as such or open a wall and combine with the front area. The rear open space is 5856 sf and can be whatever suits your needs. Options can include function hall, bar area with potential music stage, a separate restaurant. The options for this space are endless and could include subdividing the area into smaller units. Or combine all three and have a downtown Lowell destination full service restaurant/bar/function hall. This sale also includes a 14 foot wide owned alley way that abuts Eastern Canal and the building. This 4,000 sf area is known as 27 Kearney Sq. Currently the area is utilized as outside seating for the restaurant but the whole area could be utilized to the fullest extent. Walking distance to Middlesex/Lowell Auditorium.

Building & Property Information

	# Units	Square Ft:	Assessed Value(s)	
Residential:	0	0	Land: \$887,900	Space Available For: For Sale
Office:	0	0	Bldg: \$887,900	Lease Type:
Retail:	2	4,499	Total: \$887,900	Lease Price Includes: Not Applicable
Warehouse:	1	5,856		Lease: No Exchange: Yes
Manufacturing:	0	0	# Buildings: 1	Sublet: No
			# Stories: 1	21E on File: Yes
			# Units:	
Total:	3	10,355		
Disclosures: See attached restaurant equipment list as well as the bar area and back room list. Sale includes 27 Kearney Sq, a 14' alley way that abuts Eastern Canal and the building and is 4,000 sf.				

Drive in Doors:	Expandable:	Gross Annual Inc:
Loading Docks:	Dividable:	Gross Annual Exp:
Ceiling Height:	Elevator:	Net Operating Inc:
# Restrooms:	Sprinklers: Yes	Special Financing:
Hndcp Accessibl:	Railroad siding:	Assc: Yes Assoc Fee:

Lot Size: 10,355 Sq. Ft.	Frontage:	Traffic Count:
Acres: 0.24	Depth:	Lien & Encumb:
Survey:	Subdivide:	Undrgrnd Tank:
Plat Plan:	Parking Spaces: 0	Easements:
Lender Owned: No	Short Sale w/Lndr.App.Reg: No	

Features

Association Fee Includes: **Water, Sewer, Master Insurance, Exterior Maintenance, Snow Removal, Refuse Removal**
Construction: **Brick**
Location: **Downtown, Urban**
Parking Features: **Street**
Utilities: **Public Water, Public Sewer**



Other Property Info


Disclosure Declaration: **No**
Exclusions: **Piano and Art Work.**
Year Established: **1880**
Year Established Source: **Public Record**

Tax Information

Pin #: **178/3345/17/C1-178/3345/15/2&15/1**
Assessed: **\$887,900**
Tax: **\$21,425** Tax Year: **2025**
Book: **31095** Page: **293**
Cert:
Zoning Code: **DMU**
Zoning Desc: **Legal Conforming**
Map: Block: Lot:

Office/Agent Information

Office: Merrimack Realty Group, Chelmsford  (978) 455-4312 Ext. 204
Agent: Timothy R. Shanahan  (978) 423-6403

Team Member(s): Michael Stuart  (978) 423-3364

The information in this listing was gathered from third-party sources including the seller and public records. MLS Property Information Network, Inc., and its subscribers disclaim any and all representations or warranties as to the accuracy of this information. Content ©2025 MLS Property Information Network, Inc.

This is a generic calculator. Rates and products shown below are only examples based on market averages and are intended only as an approximate estimate of payments.

Your actual rate, payment, and costs could be higher. Get an official Loan Estimate before choosing a loan.

Accurate Live Rate Estimates			
KEY INFO	30 Year Fixed	15 Year Fixed	Conv 5/6 ARM
Down Payment:	\$399,800	\$399,800	\$399,800
Mortgage Paymt:	\$10,372	\$14,151	\$10,372
Rate:	6.750%	6.750%	6.750%
APR:	6.830%	6.830%	6.830%
Taxes: (Est.)	\$2,499	\$2,499	\$2,499
Ins./HOA Dues:	\$666	\$666	\$666
PMI:	\$0	\$0	\$0
Mo. Payment:	\$13,537	\$17,316	\$13,537

Personalize Your Mortgage

Click on the calculate button below to enter your offer price and down payment:

CALCULATE

Asking Price of **\$1,999,000** with a Down Payment of **20.0%** and a Loan Amount of **\$1,599,200**. ^**VA loans allow for a 0.0% Down Payment. ARM loan payment & interest rates will change during term. Jumbo loans may require 20% down. Click **Key Info** for required disclosure. Est. = Estimated, Ins. = Home Owners Insurance Click here for relationship disclosure.

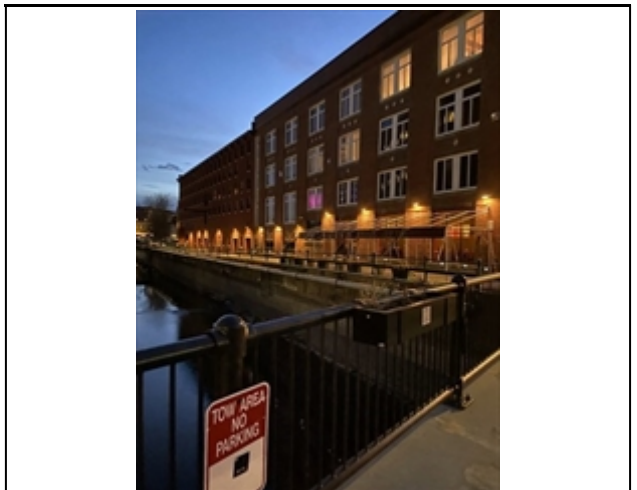
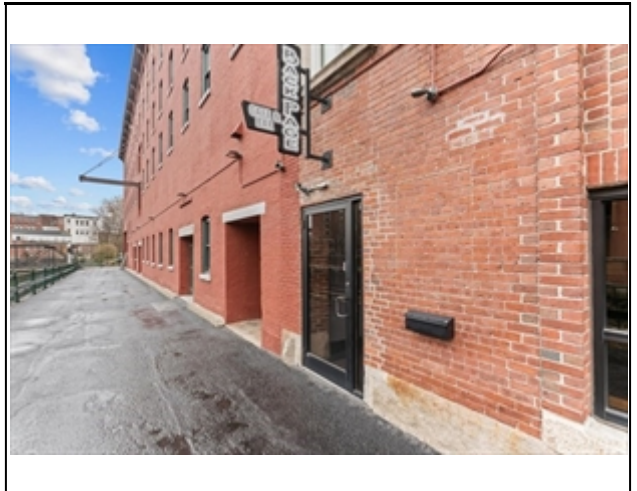
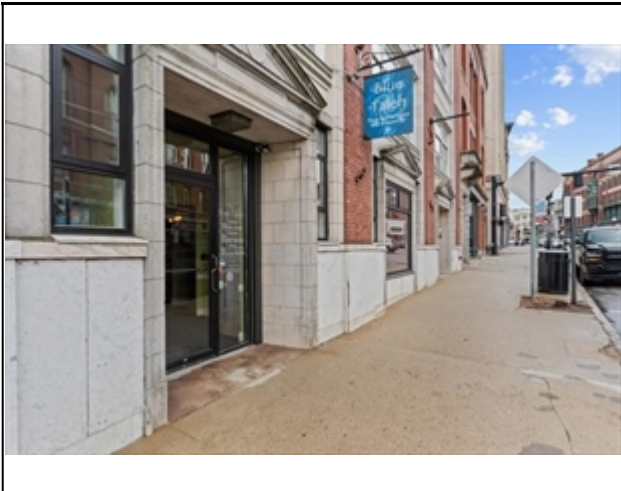
Market History for 15-17-27 Kearney Sq U:1-2-C1, Lowell, MA: Downtown, 01852

MLS #	Date		DOM	DTO	Price
73382288	5/29/2025	Listed for \$1,999,000	13		\$1,999,000
Market History for Merrimack Realty Group, Chelmsford (AN3201)			13		
Market History for this property			13		

The information in this listing was gathered from third-party sources including the seller and public records. MLS Property Information Network, Inc., and its subscribers disclaim any and all representations or warranties as to the accuracy of this information. Content @2025 MLS Property Information Network, Inc.

MLS # 73382288 - Active
15-17-27 Kearney Sq U:1-2-C1, Lowell, MA: Downtown, 01852

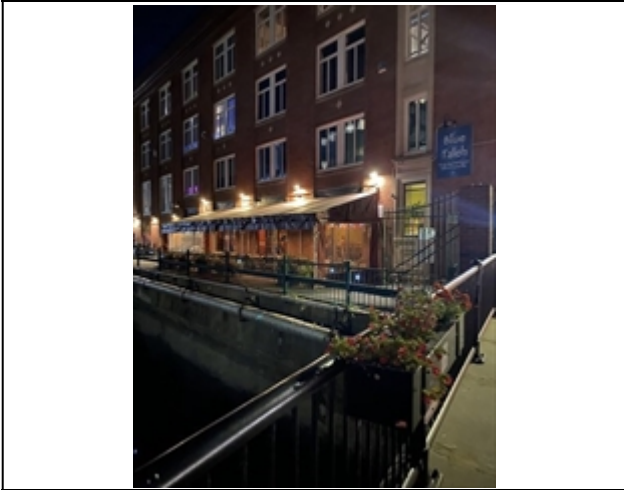
Commercial - Commercial
List Price: \$1,999,000



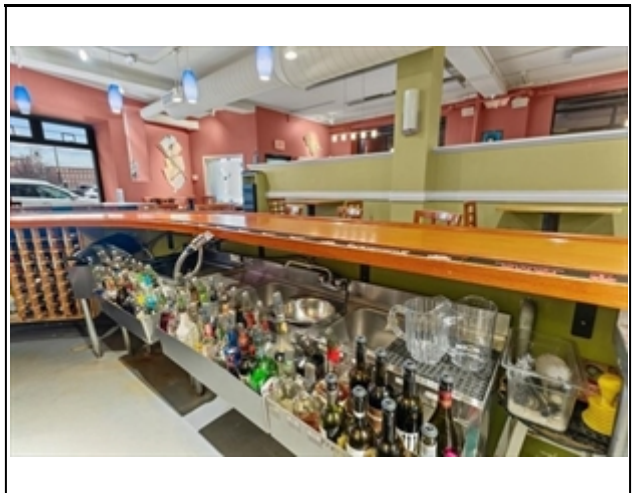
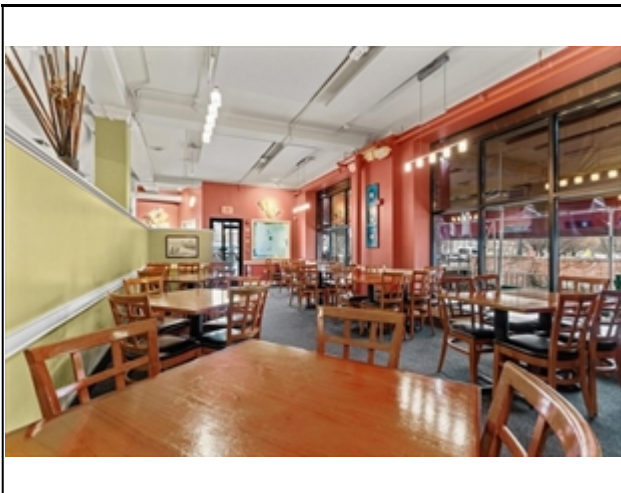
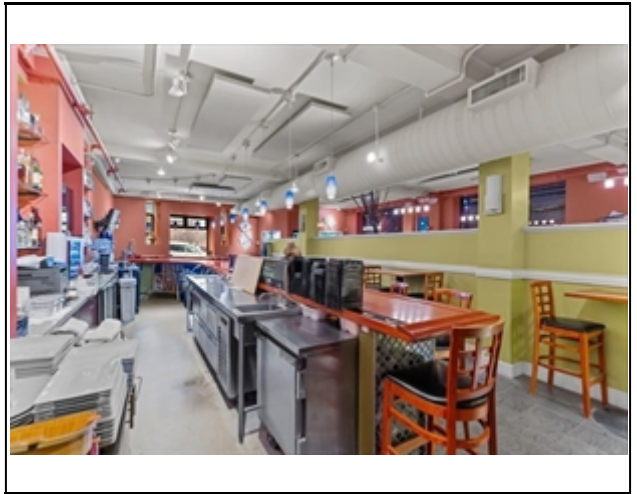
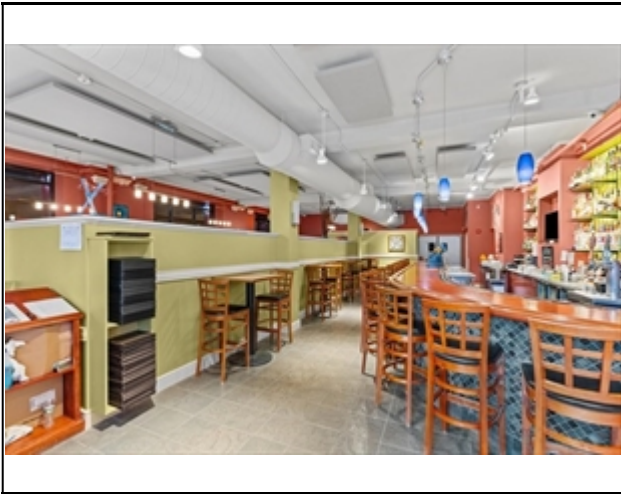
The information in this listing was gathered from third-party sources including the seller and public records. MLS Property Information Network, Inc., and its subscribers disclaim any and all representations or warranties as to the accuracy of this information. Content ©2025 MLS Property Information Network, Inc.

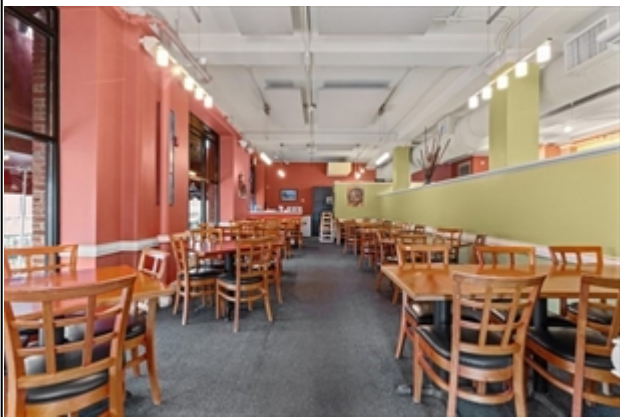
MLS # 73382288 - Active
15-17-27 Kearney Sq U:1-2-C1, Lowell, MA: Downtown, 01852

Commercial - Commercial
List Price: \$1,999,000



The information in this listing was gathered from third-party sources including the seller and public records. MLS Property Information Network, Inc., and its subscribers disclaim any and all representations or warranties as to the accuracy of this information. Content ©2025 MLS Property Information Network, Inc.







MLS # 73382288 - Active
15-17-27 Kearney Sq U:1-2-C1, Lowell, MA: Downtown, 01852

Commercial - Commercial
List Price: \$1,999,000



The information in this listing was gathered from third-party sources including the seller and public records. MLS Property Information Network, Inc., and its subscribers disclaim any and all representations or warranties as to the accuracy of this information. Content ©2025 MLS Property Information Network, Inc.

